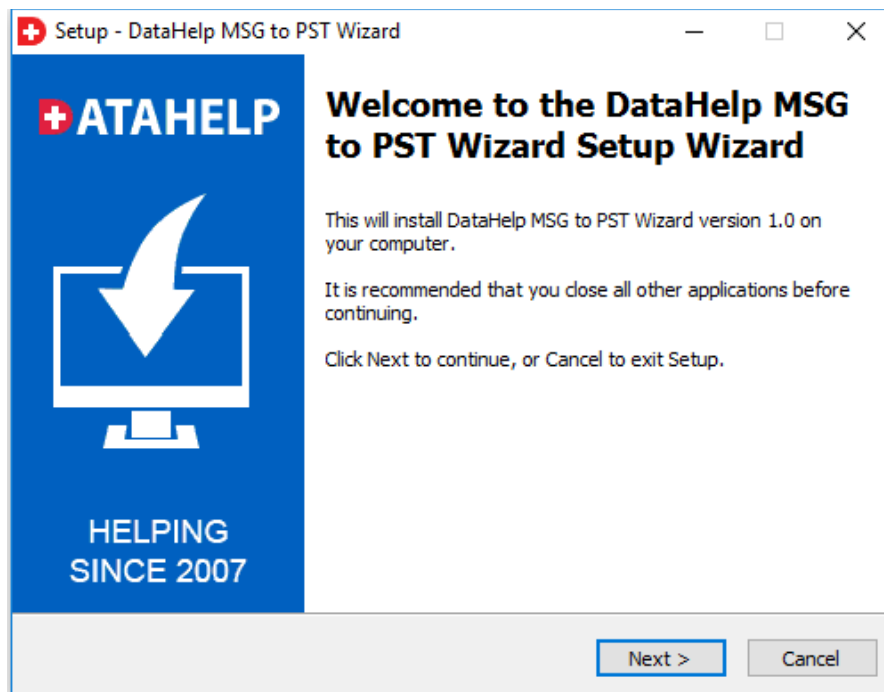


## Installation of DataHelp MSG to PST Wizard

You can install **DataHelp MSG to PST Converter** properly on your computer by performing the following steps:

- Download **DataHelp MSG to PST Converter**'s latest version from the website.
- Double click on downloaded **DataHelp MSG to PST Converter** (msg-to-pst-wizard.exe). Click on the **Run** option.
- Once you will double click on setup, the setup will ask, ***Do you want to run this file*** and you have to click on **Run** to proceed in installation.
- After this, when you will click on **Run**, you will get welcomed in **DataHelp MSG to PST Converter** setup, you have to click on **Next** in that setup to proceed.



- After clicking on Next, the setup will offer you a **Service License Agreement** and you have to **Accept** that agreement to proceed. Once you

- will accept the agreement, the **Next** option will automatically get activated for you and you have to click on that to proceed.
- When you will click on Next, you will be asked to **select destination location** for installation of software. By default, the software will get installed on this location **C:\Program Files\DataHelp MSG to PST Wizard** but, if you wish then, you can also select a different destination location by clicking on Browse button. (Once you will select the destination location, you have to click on Next to proceed).
  - After doing this, you have to **select the Start Menu Folder** in which the shortcuts of program need to be placed and click **Next**.
  - After selection of Start Menu folder, the setup will ask you to if you want to **Create desktop icon**. You can select/ unselect the option and click on **Next**.
  - After this, the setup will give you a message saying that software is ready to install on computer system. (You have to click on **Install** button in that Message Window to move to the last step of installation process).
  - At last, you will get a confirmation message saying that setup process is complete, do you want to Launch **DataHelp MSG to PST Converter**. You have to click on **Finish**.