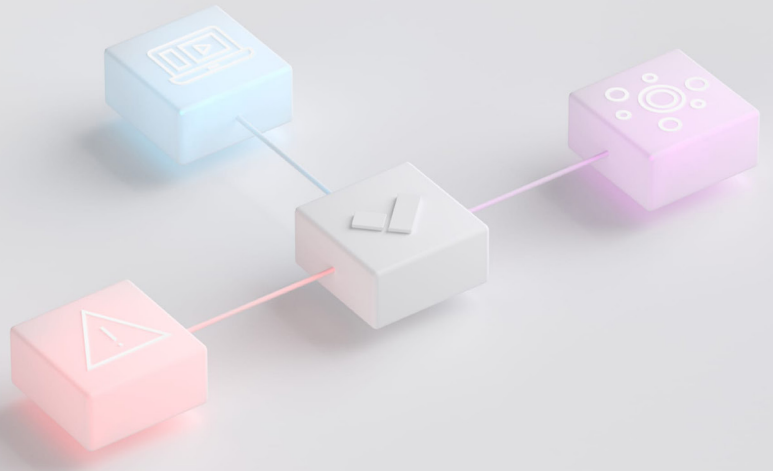


Platform Extensibility at Verkada

APIs, Integrations, and Helix Overview



Physical security operations are a crucial component of an organization's broader network of business tools, and it's essential that these systems integrate seamlessly. To support platform interoperability, Verkada has developed a growing portfolio of [easy-to-implement, out-of-the-box technology \(OOTB\) integrations](#), [an expansive library of API endpoints for developers](#), and a powerful search and alerting engine, [Helix](#), which brings relevant third-party data into Command. This document summarizes how Verkada's customers leverage APIs, pre-built OOTB integrations, and Helix to bridge Command, Verkada's cloud-based management platform, with different systems and tools.

API Endpoints for Highly-Customizable Integrations

[Verkada's APIs](#) enable organizations to ingest and extract relevant data across a variety of platforms, applications, and databases. These endpoints balance simplicity and usability with the flexibility required to design and optimize unique workflows.

Verkada's API endpoints are called an average of **2 million times** each day by hundreds of different customers. Popular API calls that have helped organizations expand the reach of their Command data include:

Streaming API

The [Streaming API](#) allows organizations to stream both live and historical footage from cameras using the HLS protocol, making it easy to ingest footage into third-party GSOCs or custom dashboards.

Create a Person of Interest API

The [Create a Person of Interest](#) API endpoint allows organizations to import Person of Interest profiles to Command from third-party databases – making it easy to add POI profiles to Command organizations at scale. With the Create a Person of Interest API, organizations can automate the process of creating a Command POI profile – saving time and resources.

Access Events Webhooks

[Access Events Webhooks](#) enable organizations to receive real-time events and logs from their Verkada access control system. This helps users analyze activity for potential security threats by integrating Verkada data into third-party applications.

Get Occupancy Trend Data API

The [Get Occupancy Trend Data](#) API endpoint enables organizations to extract foot or vehicle traffic data for further analysis. Among other uses, this API enables retailers to better understand these traffic patterns and adjust product placement or staffing accordingly.



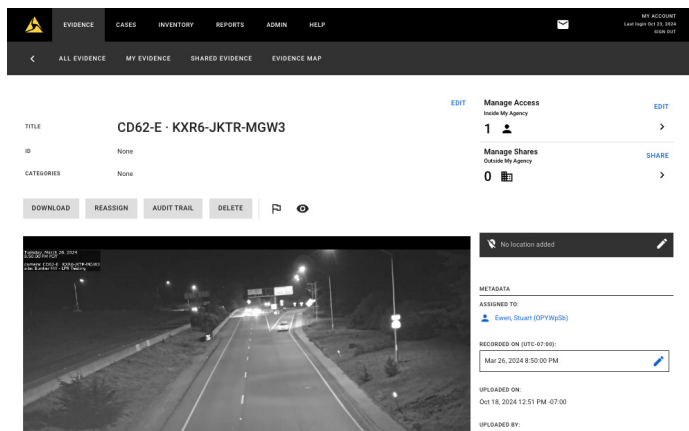
Out-of-the-Box Integrations for Plug-and-Play Interoperability

Organizations may prefer to leverage Verkada's pre-built integrations with industry-standard systems, like Mass Notification Systems (MNSs), Real Time Crime Centers (RTCCs), and Global Security Operations Centers (GSOCs). Verkada partners with a variety of third-party technology providers to design, build, and validate integrations with commonly-used applications.

[These integrations](#) can be deployed in minutes and provide an easy way for customers to extract additional value out of their Verkada deployments. Popular integrations include:

Axon Evidence

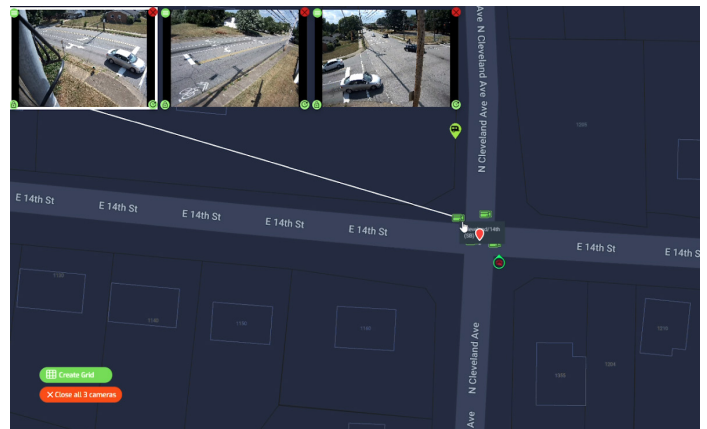
[Axon Evidence](#) exports video archives from Command to an Evidence.com account to simplify management of digital evidence used for criminal investigations.



A 538MB archive captured on a Verkada CD62-E camera and saved within an Axon Evidence account. Axon Evidence stores and organizes digital evidence used for criminal investigations—providing a centralized platform to manage both internal and external access to relevant video and audio files.

FUSUS

[FUSUS](#) connects Verkada Cameras to FUSUS' RTCC to enable law enforcement to access live camera footage in emergency situations, which improves incident response effectiveness.



Three Verkada camera feeds visible within FUSUS' RTCC platform. FUSUS provides law enforcement with live access to security cameras in emergency situations – increasing visibility of unfolding security incidents and providing valuable real-time information.



Leverage Helix to Surface Video Footage of Different Events

Helix allows organizations to pair data from third-party applications with camera footage to offer visibility and data-driven insights into their operations.

Generate custom events unique to your organization


Turn any step in a process — from a retail transaction to an action on an assembly line — into a custom event paired with contextual video footage.

Get alerted when events of interest occur

Define custom criteria to surface specific events of interest. Receive real-time alerts paired with relevant camera footage any time these conditions are met.

Easily visualize data and surface trends

Dashboards and reporting tools let you compare data across time and place, like sales conversion rates versus historical trends, or peak production hours over the past week.




HQ Cashier Checkout

3. San Mateo - HQ Store

Cashier Vie... >
Jan 9, 11:54 AM PST

Details

Discount:	true
Discount Name:	Employee & Visitor Special - 20% Off
Discount Percentage:	20
Items:	Black Full Zip Unisex Hoodie (L), Softshell Men's Vest Black (L)
Transaction Amount	175.4



Production Line

Distribution Center

Distributio... >
Jul 31, 1:53 PM PDT

Details

Employee:	Jameson
Part ID:	JQ9E-HJJN-DKR4
Process Description:	Pack sensor
Process ID:	592148
Process Type:	Packaging
Weight:	5

Retail transaction information ingested into Verkada Command using Helix. Footage of a purchase is paired with key information including the discount applied, items sold, and transaction amount. Organizations can also use this contextual information to search for specific footage in the event of a chargeback or be alerted when a discount exceeding a certain amount is applied to a purchase.

Production line information ingested into Verkada Command using Helix. Footage of packaging a part is paired with key information including the employee's name, part ID serial number, stage in the production line process, and weight of the item (in pounds). Organizations can also use this contextual information to search for specific footage if a defect is identified or be alerted to packages with irregular weights.