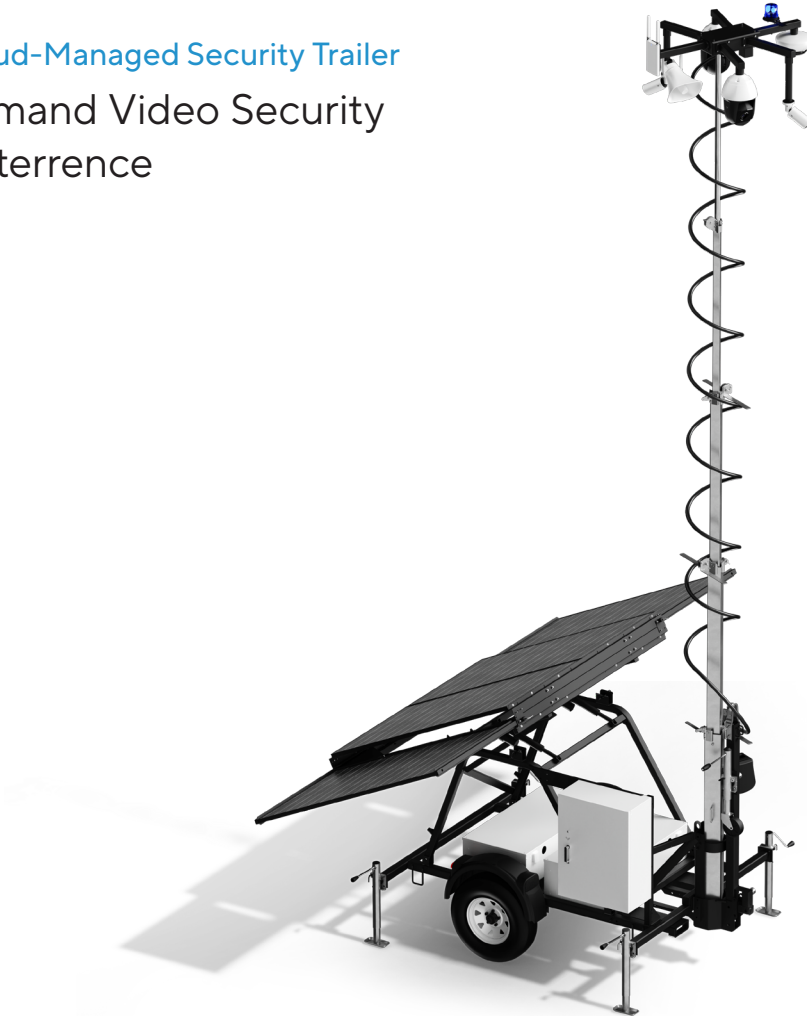


MT81 Cloud-Managed Security Trailer

On-Demand Video Security and Deterrence



Overview

The MT81 Cloud-Managed Security Trailer makes it simple to deploy Verkada security systems anywhere, including hard-to-wire or temporary locations such as parking lots, construction sites, large venues, industrial yards, and crime hot spots.

Designed for rapid deployment, every MT81 runs on solar, is cloud-connected, and supports up to six Verkada devices. The trailer comes in two variants: the MT81-6KWH and the MT81-13KWH, each with a different battery capacity to accommodate a range of power requirements. Head unit devices (such as cameras and speakers) and their licenses are sold separately.

Bringing the trailer online is easy. Simply connect a Verkada or third-party internet gateway (e.g., Starlink) to the built-in Verkada trailer controller, and you can begin monitoring the trailer and any connected devices in Verkada Command.

Key features

Rapid deployment

Pre-wired, Verkada-compatible arm mounts, and a built-in PoE switch make installation simple. Scan a QR code and the trailer is ready in Command.

Cloud-managed in Command

Remotely monitor GPS location, solar input, battery level, power load, and connected devices in Command.

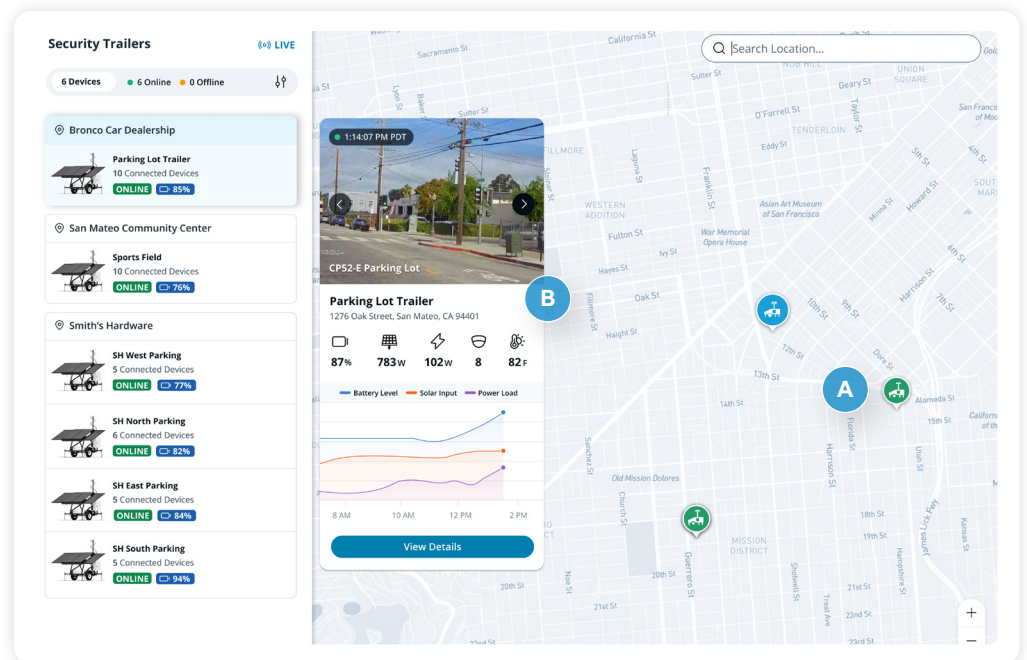
Customized to security needs

Leverage Verkada-validated configurations or choose the exact trailer and device combination that fits your security and uptime requirements.

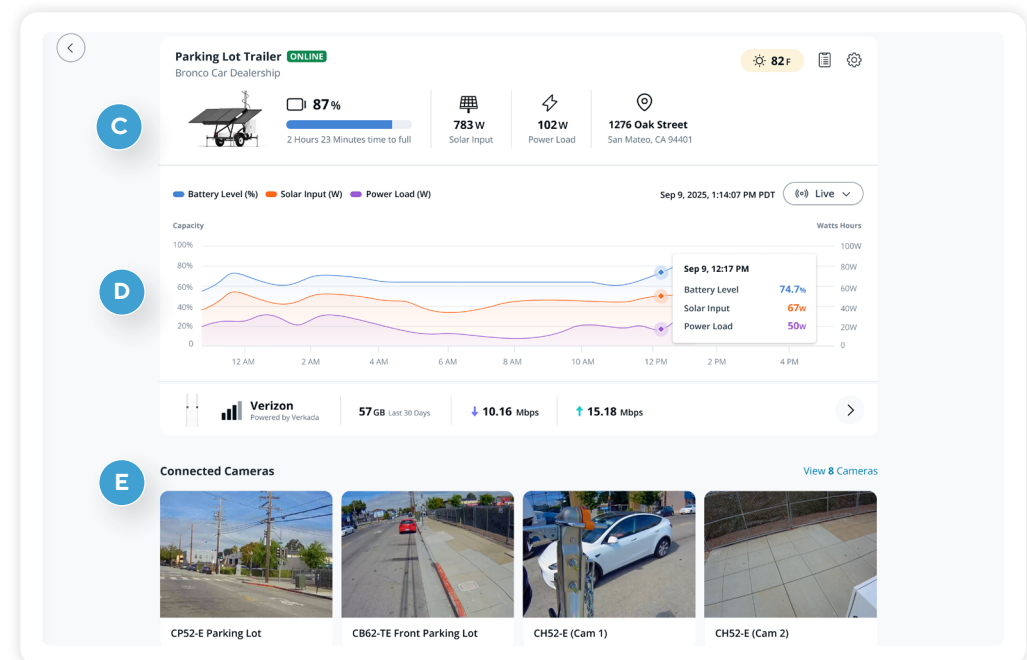


Manage at scale via the cloud

- A. View the GPS locations of all your trailers
- B. See summarized metrics for each trailer



- C. View live solar input, battery level, power load, and weather details
- D. See historical trends of various power metrics
- E. Easily manage and navigate across connected devices





MT81 Cloud-Managed Security Trailer Hardware Overview



Multisensor and fisheye cameras require pendant caps, which are sold separately. See the Accessories section for more information.



MT81-6KWH / MT81-13KWH

Tech Specs

Power System

Solar Panel Capacity	1,600W (high-efficiency photovoltaic solar modules)	Battery Housing	Single / dual battery box with bolted lid
Solar Array	Electric actuator-tilt	Battery Charger	NEMA 5-15 plug (15A / 120 VAC)
Solar Controller	Smart MPPT (Maximum Power Point Tracking) charge controller and communicator	Power Inverter	375W
Batteries	29V lithium-ion	Control Box	Aluminum with 3-point locking door (24"W x 34"H x 10"D) Ventilated with cooling fan
Battery Capacity	6.6 kWh / 13.2 kWh usable total capacity	System Monitoring	Verkada Command

Inputs and Outputs

Uplink Port	1x GigE RJ45 port 802.3bt Type 3	Ethernet Ports for Devices	6x GigE RJ45 ports 802.3bt Type 4
Total PoE Budget	480W		

Tower and Mounting

Tower	24' telescoping mast	Camera Arms	6x Verkada-compatible arm mounts (1-1/2" NPT) with hole for safety screw
Rotation	355°	Mounting Patterns	Mounting pattern for Verkada outdoor gateway Mounting pattern for Verkada horn speaker
Actuation	Electric-powered winch for raising and lowering	Cabling	1x Cat6 cable, 6x Cat5e cables, 1x 16/2 power cable
Camera Mount	Multi-head camera box	Strobe Light	Blue LED flashing beacon on head unit
Wind Rating	Up to 65 mph at full mast with stabilizers deployed	Max Weight for Winch	150 lb



MT81-6KWH / MT81-13KWH

Tech Specs

Trailer and Chassis

Construction	Tubular steel welded construction	Tire Size	15" diameter wheels
Drawbar	Tilting drawbar Standard 2" ball hitch Swivel wheel tongue jack	Stabilizers	4x 2,000 lb stabilizer corner jacks
Suspension / Capacity	3,500 lb capacity Double-eye leaf springs	Max Towing Speed	65 mph
Tail Lights	LED combination tail light (turn, brake, tail)	Electrical Connector	Standard 4-wire flat connector (4-way flat)

General

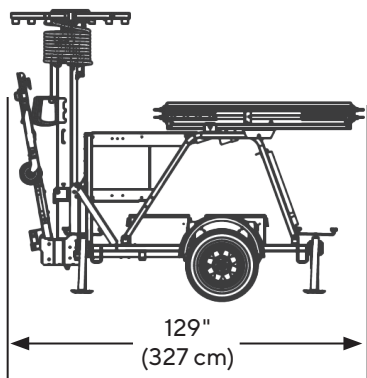
Weight	2,700 lb / 2,900 lb (without connected devices)	Warranty	5 years, parts only (includes chassis, power system, and electronics)
Operating Temperature	-4 to 122° F (-20 to 50° C)	Safety Certifications	Federal Motor Vehicle Safety Standards (FMVSS)
Humidity	0-95% RH non-condensing	Dimensions	Refer to the next page
Weather Rating	IP55	Included Accessories	2x combination locks, 2x 12" drop pipes for improved LPR performance on Verkada bullet cameras



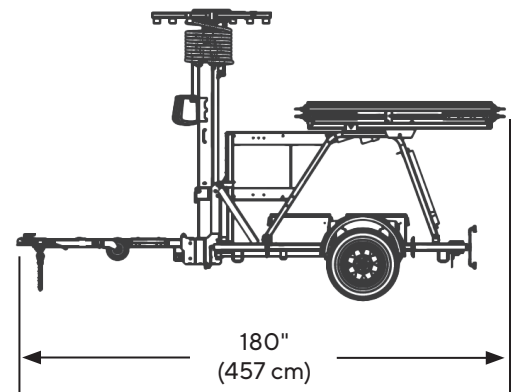
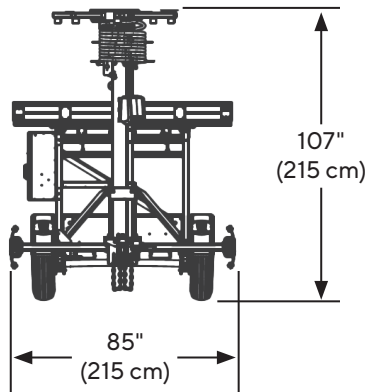
MT81 Cloud-Managed Security Trailer

Dimensions

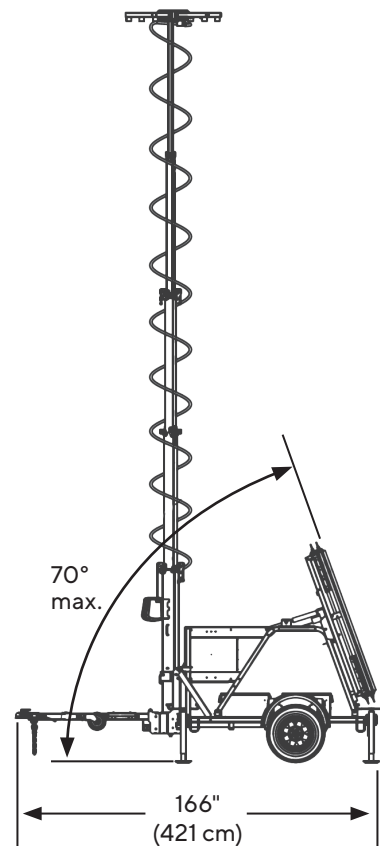
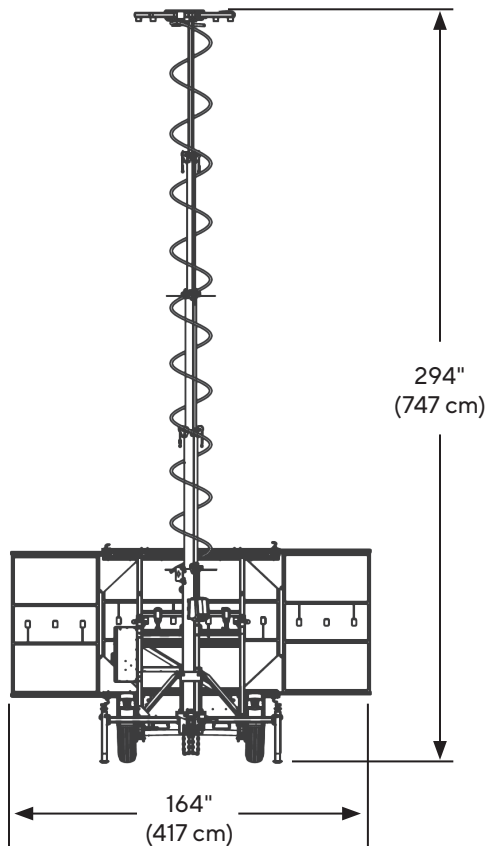
Storage



Travel



Deployed





Required Mounting Accessories

All head unit devices, their licenses, and any required mounting accessories are sold separately from the trailer.

Device Type	Model	Required Mounting Accessory
Bullet Camera	CB52-E , CB62-E , CB52-TE , CB62-TE	None
PTZ Camera	CP52-E , CP63-E	None
Two-Camera Multisensor	CY53-E , CY63-E	ACC-MNT-YPEND-1
Four-Camera Multisensor	CH53-E , CH63-E	ACC-MNT-HPEND-1
Fisheye Camera	CF83-E	ACC-MNT-PEND-1
Dome Camera	CD43-E , CD53-E , CD63-E	ACC-MNT-PEND-1
Talk-Down Horn Speaker	BZ11	None
Cellular Gateway	GC31-E	None
Wi-Fi Gateway	GW31-E	None



Verkada-Validated Configurations (VVCs)

Organizations can connect various devices to the MT81 to meet their specific requirements. To guide designs across different geographies and use cases, Verkada recommends the configurations below, with uptime projections based on historical weather data from major U.S. cities.

VVC 1

Designed for core security needs, such as remote monitoring, investigations, and deterrence. Recommended for construction sites, crime hot spots, and parking lots.

Model	Description	Quantity
CP52-E	Outdoor PTZ Camera	2
CF83-E	Outdoor Fisheye Camera	1
BZ11	Talk-Down Horn Speaker	1
GC31-E	Outdoor Cellular Gateway	1



VVC 2

Provides zero-compromise security with maximum coverage, including license plate recognition. Recommended for stadiums, large public events, and high-value lots.

Model	Description	Quantity
CP52-E	Outdoor PTZ Camera	2
CB62-TE	Outdoor Bullet Camera, Telephoto Lens	2
CH53-E	Outdoor Four-Camera Multisensor	1
BZ11	Talk-Down Horn Speaker	1
GC31-E	Outdoor Cellular Gateway	1



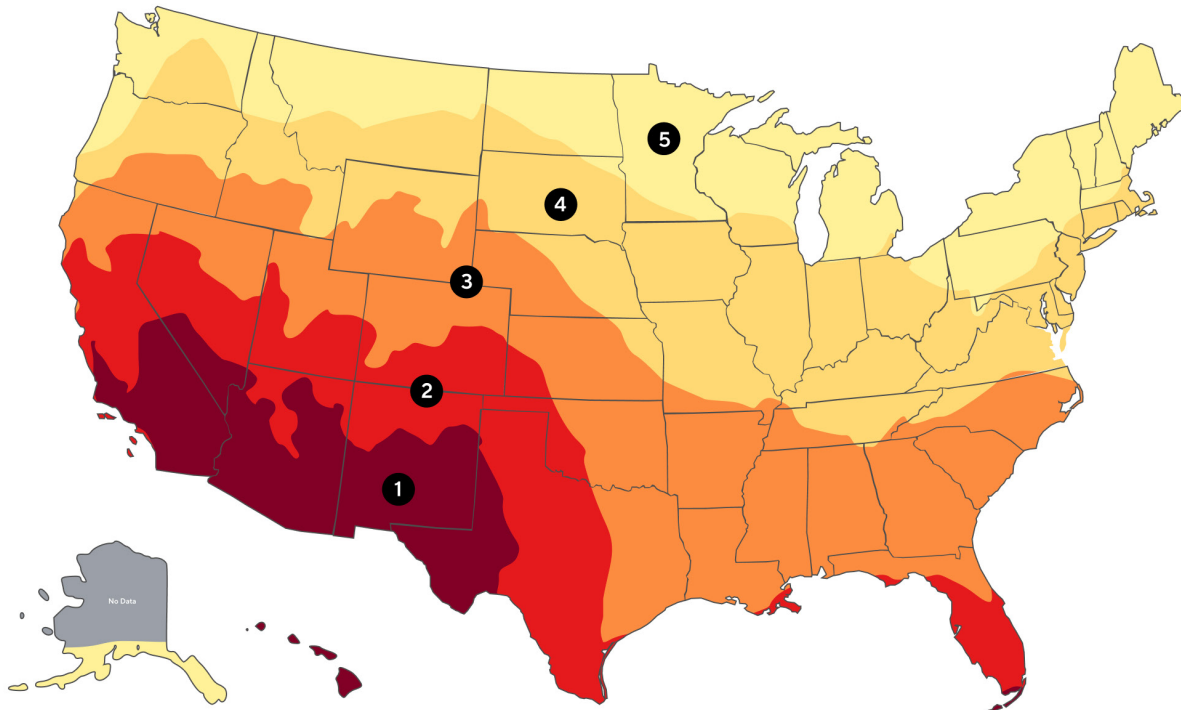


Verkada-Validated Configurations

Uptime Projections*

		VVC 1				VVC 2			
Zone	Example Cities	Estimated Hours Offline per Year		Estimated Uptime		Estimated Hours Offline per Year		Estimated Uptime	
		MT81-6KWH	MT81-13KWH	MT81-6KWH	MT81-13KWH	MT81-6KWH	MT81-13KWH	MT81-6KWH	MT81-13KWH
1	Phoenix, AZ Las Vegas, NV Albuquerque, NM	10	10	99.9%	99.9%	10	10	99.9%	99.9%
2	Denver, CO Los Angeles, CA San Mateo, CA	10	10	99.9%	99.9%	50	10	99.5%	99.9%
3	Atlanta, GA Salt Lake City, UT Charlotte, NC	50	10	99.5%	99.9%	250	10	97%	99.9%
4	Washington, D.C. Philadelphia, PA NYC, NY	100	10	99%	99.9%	500	100	95%	99%
5	Portland, OR Cleveland, OH Seattle, WA	250	100	97%	99%	1500	1000	85%	90%

Uptime Zone Map



*Real-world uptime can be affected by a variety of factors such as solar panel orientation and weather variation. Uptime projections are based on simulated data and assume unshaded, south-facing solar panels. Projected downtime is most likely to occur in the winter months during early morning hours. AC shore power is recommended for deployments with <99% uptime.



Ordering Information

Cloud-Managed Security Trailer

Verkada security trailers are sold exclusively in the United States through certified partners.

Note: Connected devices such as cameras, speakers, and gateways are sold separately.

Model Number	Description	Cost (MSRP) USD
MT81-6KWH-HW	MT81 Cloud-Managed Security Trailer, Includes Chassis, PoE Switch, and 1600W Solar System with 6.6 kWh Lithium-Ion Battery Pack	\$58,000
MT81-13KWH-HW	MT81 Cloud-Managed Security Trailer, includes Chassis, PoE Switch, and 1600W Solar System with 13.2 kWh Lithium-Ion Battery Pack	\$65,000

Security Trailer Cloud License (New/Capacity Increase)

Model Number	Description	Cost (MSRP) USD
LIC-MT-1Y-CAP	1-Year Security Trailer Cloud License, Capacity Increase	\$349
LIC-MT-3Y-CAP	3-Year Security Trailer Cloud License, Capacity Increase	\$999
LIC-MT-5Y-CAP	5-Year Security Trailer Cloud License, Capacity Increase	\$1,599
LIC-MT-10Y-CAP	10-Year Security Trailer Cloud License, Capacity Increase	\$3,199

Security Trailer Cloud License (Renewal)

Model Number	Description	Cost (MSRP) USD
LIC-MT-1Y-RNW	1-Year Security Trailer Cloud License, Renewal	\$349
LIC-MT-3Y-RNW	3-Year Security Trailer Cloud License, Renewal	\$999
LIC-MT-5Y-RNW	5-Year Security Trailer Cloud License, Renewal	\$1,599
LIC-MT-10Y-RNW	10-Year Security Trailer Cloud License, Renewal	\$3,199

Trailers are shipped via flatbed truck. The receiver must have a loading dock or provide a forklift with a qualified operator to unload at the scheduled delivery time.