

Chapter G:I

I. Lecturenotes Guide

- ❑ First Steps
- ❑ Slide Examples
- ❑ Slide Commands Overview
- ❑ Latex Hints

- ❑ Lecturenotes Typesetting Test

- ❑ Lecturenotes Figures

First Steps

Style Files and Options

Make the following style files accessible for Latex: (via texmf tree, same directory)

```
lecture.cls  
size17r.clo  
expandonce_sauer.sty
```

Optional arguments for lecture.cls: (default in blue)

```
{ latin1, utf8 } { nimbus, texgyre } { american, german }  
{ 1:1, 5:4, 9:7, 4:3, 17:12, 3:2, 8:5, 16:9 } legacy
```

First Steps

Style Files and Options

Make the following style files accessible for Latex: (via texmf tree, same directory)

```
lecture.cls  
size17r.clo  
expandonce_sauer.sty
```

Optional arguments for lecture.cls: (default in blue)

```
{ latin1, utf8 } { nimbus, texgyre } { american, german }  
{ 1:1, 5:4, 9:7, 4:3, 17:12, 3:2, 8:5, 16:9 } legacy
```

Code for a frame file with a single slide: (see rendering on next page)

```
\documentclass{lecture}  
\begin{document}  
  
\bsauthor{Webis}  
\bsyear{2023}  
\begin{bsslide} \lipsum[1][1] \end{bsslide}  
  
\end{document}
```

Lorem ipsum dolor sit amet, consectetur adipiscing elit.

SLIDE

Chapter G:I

I. Style Guide

- First Steps
- Slide Examples
- Slide Commands Overview
- Latex Hints

- Lecturenotes Typesetting Test

- Lecturenotes Figures

Slide Examples

Standard Slide

```
\begin{bsslide}[<SLIDEHEAD>] % <SLIDEHEAD> := Slide Examples
\colortext{<SUBHEAD>} % <SUBHEAD> := Standard Slide
\bspar2 % Or some other value: \bspar0 ... \bspar9 ... \bspar{NUMBER}.
<TEXT>
\end{bsslide}
```

Slide Examples

Standard Slide + Continuous Slide

```
\begin{bsslide}[<SLIDEHEAD>] % <SLIDEHEAD> := Slide Examples
\colortext{<SUBHEAD>} % <SUBHEAD> := Standard Slide
\bspar2 % Or some other value: \bspar0 ... \bspar9 ... \bspar{NUMBER}.
<TEXT>
\end{bsslide}
```

```
\begin{bsslide}[<SLIDEHEAD>] % <SLIDEHEAD> := Slide Examples
\lastslide % Replay previous slide except <SLIDEHEAD>, which always must be set.
<TEXT> % Can include (as shown here) a redefinition of previous <SUBHEAD>.
\end{bsslide}
```

Slide Examples

Standard Slide + 2nd Continuous Slide

```
\begin{bsslide}[<SLIDEHEAD>] % <SLIDEHEAD> := Slide Examples
\colortext{<SUBHEAD>} % <SUBHEAD> := Standard Slide
\bspar2 % Or some other value: \bspar0 ... \bspar9 ... \bspar{NUMBER}.
<TEXT>
\end{bsslide}
```

```
\begin{bsslide}[<SLIDEHEAD>] % <SLIDEHEAD> := Slide Examples
\lastslide % Replay previous slide except <SLIDEHEAD>, which always must be set.
<TEXT> % Can include (as shown here) a redefinition of previous <SUBHEAD>.
\end{bsslide}
```

```
\begin{bsslide}[<SLIDEHEAD>] % As before.
\lastslide % As before.
<TEXT> % As before.
\end{bsslide}
```

Slide Examples

Standard Slide + 3rd Continuous Slide

```
\begin{bsslide} [<SLIDEHEAD>] % <SLIDEHEAD> := Slide Examples
\colortext{<SUBHEAD>} % <SUBHEAD> := Standard Slide
\bspar2 % Or some other value: \bspar0 ... \bspar9 ... \bspar{NUMBER}.
<TEXT>
\end{bsslide}
```

```
\begin{bsslide} [<SLIDEHEAD>] % <SLIDEHEAD> := Slide Examples
\lastslide % Replay previous slide except <SLIDEHEAD>, which always must be set.
<TEXT> % Can include (as shown here) a redefinition of previous <SUBHEAD>.
\end{bsslide}
```

```
\begin{bsslide} [<SLIDEHEAD>] % As before.
\lastslide % As before.
<TEXT> % As before.
\end{bsslide}
```

```
\begin{bsslide} [<SLIDEHEAD>] % As before.
\lastslide % As before.
<TEXT> % As before.
\end{bsslide}
```

Slide Examples

Animated Slides

```
\renewcommand{\textcolorA}{white} % Store a color in a variable.  
\begin{bsslide}  
<TEXT>  
\color{\textcolorA} % Hide following content.  
<TEXT>  
\end{bsslide}
```

```
\renewcommand{\textcolorA}{black} % Redefine the color variable.  
\begin{bsslide}  
\lastslide % Replay previous slide with changed color.  
\end{bsslide}
```

Slide Examples

Lists

```
\begin{itemize}
\setlength{\itemsep}{1ex} % Or some other value.
\item
<TEXT>
\coloritem[<COLOR>]
<COLORED TEXT>
\item
<TEXT>
\end{itemize}
```

Slide Examples

Animated List

1. Lorem ipsum dolor sit amet, consectetur adipiscing elit.
2. Ut purus elit, vestibulum ut, placerat ac, adipiscing vitae, felis.
3. Curabitur dictum gravida mauris.

SLIDE

Slide Examples

Animated List

1. Lorem ipsum dolor sit amet, consectetur adipiscing elit.
2. Ut purus elit, vestibulum ut, placerat ac, adipiscing vitae, felis.
3. Curabitur dictum gravida mauris.

SLIDE

Slide Examples

Animated List

1. Lorem ipsum dolor sit amet, consectetur adipiscing elit.
2. Ut purus elit, vestibulum ut, placerat ac, adipiscing vitae, felis.
3. Curabitur dictum gravida mauris.

SLIDE

Slide Examples

Animated List: Code

```
\renewcommand{\textcolorA}{ultralightgray}  
\renewcommand{\textcolorB}{ultralightgray}  
  
\begin{bsslide}[Slide Examples]  
\colortext{Animated List}  
\bspar2  
\begin{enumerate}  
\setlength\itemsep{1ex}  
\item  
\lipsum[1][1]  
\coloritem[\textcolorA]  
\lipsum[1][2]  
\coloritem[\textcolorB]  
\lipsum[1][3]  
\end{enumerate}  
\end{bsslide}
```

```
\renewcommand{\textcolorA}{black}  
\begin{bsslide}[Slide Examples]  
\lastslide  
\end{bsslide}
```

```
\renewcommand{\textcolorA}{mediumgray}  
\renewcommand{\textcolorB}{\altcolor}  
\begin{bsslide}[Slide Examples]  
\lastslide  
\end{bsslide}
```

Slide Examples

Tables

```
\renewcommand{\arraystretch}{1.2} % Or some other value.
\setlength{\tabcolsep}{20pt}
\small

\begin{tabular}{cc}
\setlength{\itemsep}{1ex}
\toprule
\bfseries <COLUMN HEAD> & \bfseries <COLUMN HEAD> \\
\midrule
<TEXT> & <TEXT> \\
<TEXT> & <TEXT> \\
\bottomrule
\end{tabular}
```

Slide Examples

Figures (centered)

Lorem ipsum dolor sit amet, consectetur adipiscing elit.



Code

```
\lipsum[1][1]  
\bsfigure[scale=0.3]{sample-figure}
```

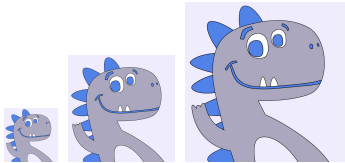
Slide Examples

Figures (inline)

Lorem ipsum dolor sit amet, consectetur adipiscing elit.



Lorem ipsum dolor sit amet, consectetur adipiscing elit.



Code

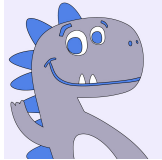
```
\lipsum[1][1]  
\bsfigure[scale=0.3]{sample-figure}
```

```
\lipsum[1][1]  
\par  
\bsfigureaux[scale=0.1]{sample-figure}  
\bsfigureaux[scale=0.2]{sample-figure}  
\bsfigureaux[scale=0.3]{sample-figure}
```

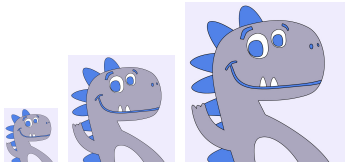
Slide Examples

Figures (displaced)

Lorem ipsum dolor sit amet, consectetur adipiscing elit.



Lorem ipsum dolor sit amet, consectetur adipiscing elit.



Lorem ipsum dolor sit amet, consectetur adipiscing elit.



Code

```
\lipsum[1][1]  
\bsfigure[scale=0.3]{sample-figure}
```

```
\lipsum[1][1]  
\par  
\bsfigureaux[scale=0.1]{sample-figure}  
\bsfigureaux[scale=0.2]{sample-figure}  
\bsfigureaux[scale=0.3]{sample-figure}
```

```
\lipsum[1][1]  
\raisebox{-10ex}[0em][0ex]  
  \bsfigureaux[scale=0.5]{sample-figure}
```



Lorem ipsum dolor sit amet, consectetur adipiscing elit.

```
\hspace{-12pt}\makebox(0em,0ex)[1]{%  
  \bsfigureaux[scale=4.5]{sample-figure}}%  
\hspace{12pt}\lipsum[1][1]
```

Slide Examples

Remarks Slide

```
\begin{bsslide}  
\small  
Remarks:  
\begin{itemize}  
\setlength{\itemsep}{1ex}  
\item  
<TEXT>  
\item  
<TEXT>  
\end{itemize}  
\end{bsslide}
```

Slide Examples

Lecture Content Slide (see [rendering](#))

```
\bsauthor{STEIN}
\bscollection{G}
\bspartname{Style Guide}
\bsyear{2023}

\setcounter{bspart}{1}
\setcounter{page}{1}
\setcounter{theorem}{0}

\begin{bsslide}[\bssparthead]
\bspar1
\begin{bspartenumerate}
\coloritem[emcolor]
Style Guide

\begin{itemize}
\small
\coloritem
First Steps
\coloritem
Slide Examples

:
\end{itemize}

\end{bspartenumerate}
\end{bsslide}
```

Slide Examples

Hyperlinks: (1) Absolute URL

(1) [Example: [Webis Machine Learning](#)]

```
\begin{bsslide}  
\bshyperref[<STYLE COMMANDS>]{<URL>}{<FRAGMENT ID>}{<CLICKABLE TEXT>}  
\end{bsslide}
```

Slide Examples

Hyperlinks: (2) Within Same (“intra”) Unit

(1) [Example: [Webis Machine Learning](#)]

```
\begin{bsslide}  
\bshyperref[<STYLE COMMANDS>]{<URL>}{<FRAGMENT ID>}{<CLICKABLE TEXT>}  
\end{bsslide}
```

```
\begin{bsslide} [<SLIDEHEAD>\hypertarget{<LABEL>}{}]  
<TEXT>  
\end{bsslide}
```

(2) [Example: [Lecture content](#)]

```
\begin{bsslide}  
\bshyperref{}{<LABEL>}{<CLICKABLE TEXT>}  
\end{bsslide}
```

Slide Examples

Hyperlinks: (3) Between Different (“inter”) Units

(1) [Example: [Webis Machine Learning](#)]

```
\begin{bsslide}
\bshyperref[<STYLE COMMANDS>]{<URL>}{<FRAGMENT ID>}{<CLICKABLE TEXT>}
\end{bsslide}
```

```
\begin{bsslide} [<SLIDEHEAD>\hypertarget{<LABEL>}{}]
<TEXT>
\end{bsslide}
```

(2) [Example: [Lecture content](#)]

```
\begin{bsslide}
\bshyperref {}{<LABEL>}{<CLICKABLE TEXT>}
\end{bsslide}
```

(3) [Example: [Hypothesis](#)]

```
\begin{bsslide}
\bshyperref [\interunitrefstyle]
  {<COLLECTION NAME>/<UNIT NAME>.pdf}{<LABEL>}{<CLICKABLE TEXT>}
\end{bsslide}
```

Slide Examples

Hyperlinks: (3) Between Different (“inter”) Units

(1) [Example: [Webis Machine Learning](#)]

```
\begin{bsslide}
\shyperref[<STYLE COMMANDS>]{<URL>}{<FRAGMENT ID>}{<CLICKABLE TEXT>}
\end{bsslide}
```

```
\begin{bsslide} [ <SLIDEHEAD> \hypertarget { <LABEL> } {} ]
<TEXT>
\end{bsslide}
```

(2) [Example: [Lecture content](#)]

```
\begin{bsslide}
\shyperref {} { <LABEL> } { <CLICKABLE TEXT> }
\end{bsslide}
```

(3) [Example: [Hypothesis](#)]

```
\begin{bsslide}
\shyperref [ \interunitrefstyle ]
{ <COLLECTION NAME> / <UNIT NAME> .pdf } { <LABEL> } { <CLICKABLE TEXT> }
\end{bsslide}
```

Note that `<COLLECTION NAME>/<UNIT NAME>.pdf` is sufficient since `lecture.cls` defines `\baseurl` as `'https://webis.de/downloads/lecturenotes/'`.

Slide Examples

Hyperlinks: Tweaking the Style

(1) Absolute URL (automatic default: solid line)

```
\bshyperref{...  
\bshyperref[\bshyperrefstyle]{...  
\graytext{\bshyperref[\color{mediumgray}\bshyperrefstyle]{...  
\bshyperref[\uline]{...  
\graytext{\bshyperref[\color{mediumgray}\uline]{...
```

[Webis Machine Learning](#) Text
[Webis Machine Learning](#) Text
[Webis Machine Learning](#) Text
[Webis Machine Learning](#) Text
[Webis Machine Learning](#) Text

Slide Examples

Hyperlinks: Tweaking the Style

(1) Absolute URL (automatic default: solid line)

```
\bshyperref{...  
\bshyperref[\bshyperrefstyle]{...  
\graytext{\bshyperref[\color{mediumgray}\bshyperrefstyle]{...  
\bshyperref[\uline]{...  
\graytext{\bshyperref[\color{mediumgray}\uline]{...}
```

[Webis Machine Learning](#) Text
[Webis Machine Learning](#) Text
[Webis Machine Learning](#) Text
[Webis Machine Learning](#) Text
[Webis Machine Learning](#) Text

(2) Within Same (“intra”) Unit (automatic default: dashed line)

```
\bshyperref{}{...  
\bshyperref[\intraunitrefstyle]{}{...  
\graytext{\bshyperref[\color{mediumgray}\intraunitrefstyle]{}{...  
\bshyperref[\udash]{}{...  
\graytext{\bshyperref[\color{mediumgray}\udash]{}{...}
```

[Lecture content](#) Text
[Lecture content](#) Text
[Lecture content](#) Text
[Lecture content](#) Text
[Lecture content](#) Text

Slide Examples

Hyperlinks: Tweaking the Style

(1) Absolute URL (automatic default: solid line)

```
\bshyperref{...  
\bshyperref[\bshyperrefstyle]{...  
\graytext{\bshyperref[\color{mediumgray}\bshyperrefstyle]{...  
\bshyperref[\uline]{...  
\graytext{\bshyperref[\color{mediumgray}\uline]{...
```

[Webis Machine Learning](#) Text
[Webis Machine Learning](#) Text
[Webis Machine Learning](#) Text
[Webis Machine Learning](#) Text
[Webis Machine Learning](#) Text

(2) Within Same (“intra”) Unit (automatic default: dashed line)

```
\bshyperref{}{...  
\bshyperref[\intraunitrefstyle]{}{...  
\graytext{\bshyperref[\color{mediumgray}\intraunitrefstyle]{}{...  
\bshyperref[\udash]{}{...  
\graytext{\bshyperref[\color{mediumgray}\udash]{}{...
```

[Lecture content](#) Text
[Lecture content](#) Text
[Lecture content](#) Text
[Lecture content](#) Text
[Lecture content](#) Text

(3) Between Different (“inter”) Units (via option)

```
\bshyperref[\interunitrefstyle]{...  
\graytext{\bshyperref[\color{mediumgray}\interunitrefstyle]{...  
\bshyperref[\uwave]{...  
\graytext{\bshyperref[\color{mediumgray}\uwave]{...
```

[Hypothesis](#) Text
[Hypothesis](#) Text
[Hypothesis](#) Text
[Hypothesis](#) Text

Slide Examples

Hyperlinks: Tweaking the Style

(1) Absolute URL (automatic default: solid line)

```
\bshyperref{...  
\bshyperref[\bshyperrefstyle]{...  
\graytext{\bshyperref[\color{mediumgray}\bshyperrefstyle]{...  
\bshyperref[\uline]{...  
\graytext{\bshyperref[\color{mediumgray}\uline]{...
```

[Webis Machine Learning](#) Text
[Webis Machine Learning](#) Text
[Webis Machine Learning](#) Text
[Webis Machine Learning](#) Text
[Webis Machine Learning](#) Text

(2) Within Same (“intra”) Unit (automatic default: dashed line)

```
\bshyperref{}{...  
\bshyperref[\intraunitrefstyle]{}{...  
\graytext{\bshyperref[\color{mediumgray}\intraunitrefstyle]{}{...  
\bshyperref[\udash]{}{...  
\graytext{\bshyperref[\color{mediumgray}\udash]{}{...
```

[Lecture content](#) Text
[Lecture content](#) Text
[Lecture content](#) Text
[Lecture content](#) Text
[Lecture content](#) Text

(3) Between Different (“inter”) Units (via option)

```
\bshyperref[\interunitrefstyle]{...  
\graytext{\bshyperref[\color{mediumgray}\interunitrefstyle]{...  
\bshyperref[\uwave]{...  
\graytext{\bshyperref[\color{mediumgray}\uwave]{...
```

[Hypothesis](#) Text
[Hypothesis](#) Text
[Hypothesis](#) Text
[Hypothesis](#) Text

(4) Suppress Underlining (via stated but empty option)

```
\bshyperref[[]]{...
```

[Lecture content](#) Text

Slide Examples

Hyperlinks: Tweaking the Style (continued)

```
\let\bshyperrefstyle\relax, \let\intraunitrefstyle\relax, \let\interunitrefstyle\relax
```

(1) Absolute URL (automatic default: solid line)

```
\bshyperref{...  
\bshyperref[\bshyperrefstyle]{...  
\graytext{\bshyperref[\color{mediumgray}\bshyperrefstyle]{...  
\bshyperref[\uline]{...  
\graytext{\bshyperref[\color{mediumgray}\uline]{...}
```

Webis Machine Learning Text
Webis Machine Learning Text
Webis Machine Learning Text
Webis Machine Learning Text
Webis Machine Learning Text

(2) Within Same (“intra”) Unit (automatic default: dashed line)

```
\bshyperref{}{...  
\bshyperref[\intraunitrefstyle]{}{...  
\graytext{\bshyperref[\color{mediumgray}\intraunitrefstyle]{}{...  
\bshyperref[\udash]{}{...  
\graytext{\bshyperref[\color{mediumgray}\udash]{}{...}
```

Lecture content Text
Lecture content Text
Lecture content Text
Lecture content Text
Lecture content Text

(3) Between Different (“inter”) Units (via option)

```
\bshyperref[\interunitrefstyle]{...  
\graytext{\bshyperref[\color{mediumgray}\interunitrefstyle]{...  
\bshyperref[\uwave]{...  
\graytext{\bshyperref[\color{mediumgray}\uwave]{...}
```

Hypothesis Text
Hypothesis Text
Hypothesis Text
Hypothesis Text

(4) Suppress Underlining (via stated but empty option)

```
\bshyperref[[]]{...}
```

Lecture content Text

Slide Examples

Hyperlinks: Tweaking the Style (continued)

```
\setkeys{Hyp}{urlcolor=\altcolor,linkcolor=\keywordcolor}
```

(1) Absolute URL (automatic default: solid line)

```
\bshyperref{...  
\bshyperref[\bshyperrefstyle]{...  
\graytext{\bshyperref[\color{mediumgray}\bshyperrefstyle]{...  
\bshyperref[\uline]{...  
\graytext{\bshyperref[\color{mediumgray}\uline]{...}
```

[Webis Machine Learning](#) Text
[Webis Machine Learning](#) Text
[Webis Machine Learning](#) Text
[Webis Machine Learning](#) Text
[Webis Machine Learning](#) Text

(2) Within Same (“intra”) Unit (automatic default: dashed line)

```
\bshyperref{}{...  
\bshyperref[\intraunitrefstyle]{}{...  
\graytext{\bshyperref[\color{mediumgray}\intraunitrefstyle]{}{...  
\bshyperref[\udash]{}{...  
\graytext{\bshyperref[\color{mediumgray}\udash]{}{...}
```

[Lecture content](#) Text
[Lecture content](#) Text
[Lecture content](#) Text
[Lecture content](#) Text
[Lecture content](#) Text

(3) Between Different (“inter”) Units (via option)

```
\bshyperref[\interunitrefstyle]{...  
\graytext{\bshyperref[\color{mediumgray}\interunitrefstyle]{...  
\bshyperref[\uwave]{...  
\graytext{\bshyperref[\color{mediumgray}\uwave]{...}
```

[Hypothesis](#) Text
[Hypothesis](#) Text
[Hypothesis](#) Text
[Hypothesis](#) Text

(4) Suppress Underlining (via stated but empty option)

```
\bshyperref[[]]{...}
```

[Lecture content](#) Text

Slide Examples

Hyperlinks: Tweaking the Style (continued)

```
\setkeys{Hyp}{colorlinks=false}% Before \begin{document}.
```

(1) Absolute URL (automatic default: solid line)

```
\bshyperref{...  
\bshyperref[\bshyperrefstyle]{...  
\graytext{\bshyperref[\color{mediumgray}\bshyperrefstyle]{...  
\bshyperref[\uline]{...  
\graytext{\bshyperref[\color{mediumgray}\uline]{...}
```

Webis Machine Learning Text
Webis Machine Learning Text
Webis Machine Learning Text
Webis Machine Learning Text
Webis Machine Learning Text

(2) Within Same (“intra”) Unit (automatic default: dashed line)

```
\bshyperref{}{...  
\bshyperref[\intraunitrefstyle]{}{...  
\graytext{\bshyperref[\color{mediumgray}\intraunitrefstyle]{}{...  
\bshyperref[\udash]{}{...  
\graytext{\bshyperref[\color{mediumgray}\udash]{}{...}
```

Lecture content Text
Lecture content Text
Lecture content Text
Lecture content Text
Lecture content Text

(3) Between Different (“inter”) Units (via option)

```
\bshyperref[\interunitrefstyle]{...  
\graytext{\bshyperref[\color{mediumgray}\interunitrefstyle]{...  
\bshyperref[\uwave]{...  
\graytext{\bshyperref[\color{mediumgray}\uwave]{...}
```

Hypothesis Text
Hypothesis Text
Hypothesis Text
Hypothesis Text

(4) Suppress Underlining (via stated but empty option)

```
\bshyperref[[]]{...}
```

Lecture content Text

Slide Examples

Animated Two-Column Slide

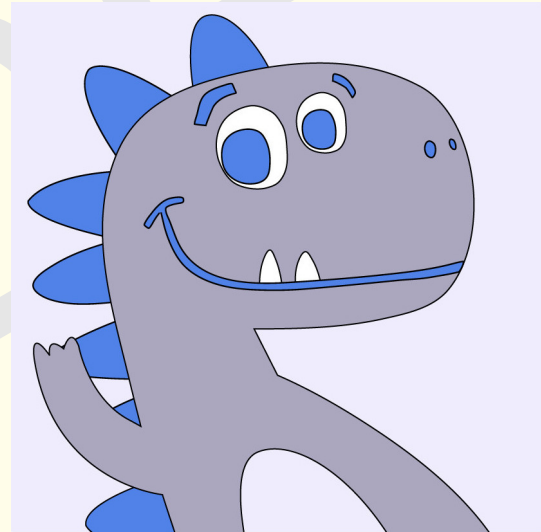
Lorem ipsum dolor sit amet, consectetur adipiscing elit. Ut purus elit, vestibulum ut, placerat ac, adipiscing vitae, felis. Curabitur dictum gravida mauris. Nam arcu libero, nonummy eget, consectetur id, vulputate a, magna. Donec vehicula augue eu neque. Pellentesque habitant morbi tristique senectus et netus et malesuada fames ac turpis egestas. Mauris ut leo. Cras viverra metus rhoncus sem. Nulla et lectus vestibulum urna fringilla ultrices. Phasellus eu tellus sit amet tortor gravida placerat.

Slide Examples

Animated Two-Column Slide

Lorem ipsum dolor sit amet, consectetur adipiscing elit. Ut purus elit, vestibulum ut, placerat ac, adipiscing vitae, felis. Curabitur dictum gravida mauris. Nam arcu libero, nonummy eget, consectetur id, vulputate a, magna. Donec vehicula augue eu neque. Pellentesque habitant morbi tristique senectus et netus et malesuada fames ac turpis egestas. Mauris ut leo. Cras viverra metus rhoncus sem. Nulla et lectus vestibulum urna fringilla ultrices. Phasellus eu tellus sit amet tortor gravida placerat.

Nam dui ligula, fringilla a, euismod sodales, sollicitudin vel, wisi. Morbi auctor lorem non justo.



Nam lacus libero, pretium at, lobortis vitae, ultricies et, tellus.

Slide Examples

Animated Two-Column Slide: Code

```
\setlength\columnsep{2em} % Or some other value.
\twocolumn
\begin{bsslide}[Slide Examples] % First column.
\colortext{Animated Two-Column Slide}
\bspar{2}
\lipsum[1][1-10]
\end{bsslide}
\clearpage % Second column empty.
```

```
\begin{bsslide}[Slide Examples] % Replay first column.
\lastslide
\end{bsslide}
```

```
\begin{bsslide}[\ ] % Second column.
\ % Ensure column alignment by creating an empty line.
\bspar{2}
\color{mediumgray}
\lipsum[2][1-2]
\bsfigure{sample-figure}
\lipsum[2][3]
\end{bsslide}
\onecolumn
```

Slide Examples

— Restyle Head and Foot —

Lorem ipsum dolor sit amet, consectetur adipiscing elit. Ut purus elit, vestibulum ut, placerat ac, adipiscing vitae, felis. Curabitur dictum gravida mauris.

SLIDE

Slide Examples

Restyle Head and Foot: Code

```
\bsslideheadstyle{\huge\color{\defaultcolor}\rule[-1.5ex]{0em}{4ex}}
\btfoot{
  \thepage/102\hfill
  \makebox(90pt,8pt)[lt]{\includegraphics[height=12pt]{buw-logo_blue}}
}

\begin{bsslide}[\centerline{Slide Examples}]
\centerline{--- \Restyle Head and Foot \ ---}
\bspar2
\lipsum[1][1-3]
\end{bsslide}
```

Chapter G:I

I. Style Guide

- ❑ First Steps
- ❑ Slide Examples
- ❑ Slide Commands Overview
- ❑ Latex Hints

- ❑ Lecturenotes Typesetting Test

- ❑ Lecturenotes Figures

Slide Commands Overview

(1) Slide Environment

`\begin{bsslide}`
`\lastslide`
`\end{bsslide}` (see [example](#))

`\bsauthor{<LASTNAME>}`
`\bsyear{<YEAR>}` (printed as right footer part, see [example](#))

Standard variables:

`\textbufferA, ... bufferI` (save arbitrary Latex code)
`\textcolorA, ... colorI` (save color name or color specification, see [example](#))

Redefinition of slide style: (see [example](#))

`\bsslideheadstyle{<LATEX>}`
`\bsfoot{<LATEX>}`

For lecturenotes authors: (see [example](#))

`\bscollection{<ACRONYM>}`
`\bspartname{<NAME>}` (printed as left footer part)

`\begin{bspartenumerate}`
`\end{bspartenumerate}`

Slide Commands Overview

(2) Predefined Colors and Color Commands

```
\defaultcolor          \colortext[\defaultcolor]{webisblueLD}  
\altcolor              \altcolortext{webisgreenA3}  
\emcolor              \emcolortext{webisredTL1}  
\keywordcolor         \keywordcolortext{webispurpleTL2}  
  
\coloritem[<COLOR>]  % Within itemize environment.
```

webisblueLD
webisgreenA3
webisredTL1
webispurpleTL2

(see [example](#) and [test](#))

Additional colors:

```
ultralightgray      {gray}{0.90}  
lightgray           {gray}{0.80}  
mediumgray          {gray}{0.60}  
darkgray            {gray}{0.40}  
ultralightyellow    {rgb}{1.00,0.98,0.87}  
lightyellow         {rgb}{1.00,0.97,0.70}
```

blue						
	webisblueA1	webisblueA2	webisblueA3	Text	Text	Text
green						
	webisgreenA1	webisgreenA2	webisgreenA3	Text	Text	Text
red						
	webisredA1	webisredA2	webisredA3	Text	Text	Text
purple						
	webispurpleA1	webispurpleA2	webispurpleA3	Text	Text	Text
yellow						
	webisyellowA1	webisyellowA2	webisyellowA3	Text	Text	Text

Slide Commands Overview

(3) Additional Text Elements

Sample text

```
\bshyperref{http://webis.de/lecturenotes.html}  
{machine-learning}{Sample text}
```



```
\bsfigure[height=24pt]{sample-figure}
```

(1), (2), ..., (6)

```
\Ni, \Nii, ..., \Nvi
```



```
\bsarrow \bsarrow[mediumgray] \bsarrow[\altcolor]
```

↪ *BOARD*

```
\bsbb (language-dependent command, 'bb' means 'blackboard')
```

[p.x, Author yyyy]

```
\bscite[p.x, Author yyyy] (command switches to \small)
```

(continued)

```
\bscont (language-dependent command, switches to \small)
```

original replacement

```
\bscom{original}{replacement}
```

Remarks (slide commands) :

- ❑ Aside from the listed commands, `lecture.cls` does not introduce additional commands for rendering slide content. The philosophy is to leave maximum (Latex) freedom for the slide author, and not to to predefine commands for a “semantic slide layer”.
- ❑ A convention is that additional commands should be defined at the frame-file-level. In this regard, an existing style file `<frame-file-name>.sty` is automatically loaded.

For this part (Style Guide) the name of the style file is `part-en-styleguide.sty`.

Chapter G:I

I. Style Guide

- ❑ First Steps
- ❑ Slide Examples
- ❑ Slide Commands Overview
- ❑ Latex Hints

- ❑ Lecturenotes Typesetting Test

- ❑ Lecturenotes Figures

Latex Hints

Your Latex Code is Read by Others

- ❑ SPSS. “Same Problem, Same Solution”
Create the same effects always in the same way.
- ❑ ROC. “Remove or Comment”
Remove unused slide content or provide an explaining comment why you keep it as comment. The code should present itself to third parties as clean and tidy as possible.
- ❑ Classify explicitly the type of comment:

```
%%% NOTES. (<ABOUT>)  
%%%  
%%% <EXPLANATORY TEXT>  
  
%%% ADDITIONS.  
%%% SOURCES.  
%%% TODO.
```
- ❑ Comments may be placed outside or inside the `bslide` environment.
- ❑ Exclamation marks (also in comments) are taboo.

Latex Hints

Some Debugging

- ❑ If font size `\small` (or other) is used for a text passage, the font switch back to `\normalsize` (which happens at the latest with `\end{bsslide}`) will cause the last line of the passage being typeset with `\normalsize` baseline skip. This undesired behavior is avoided if the passage is closed with a `\par`.
- ❑ Math environment. Put `\\` after the closing `$$` (or `\]`) to suppress vertical adjustments.
- ❑ German text. Use `"=` instead of `–` in hyphenated words to enable automatic hyphenation in `\raggedright` mode (default).
- ❑ Output messages from within Latex via `\message{<LATEX>}` or `\typeout{<LATEX>}`.

Example: `\message{^^J Page: \thepage ^^J^^J}`
`\typeout{Page: \thepage}`