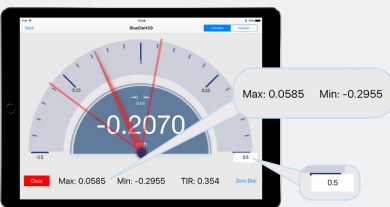
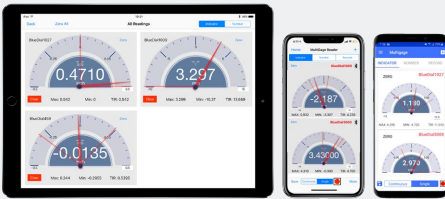
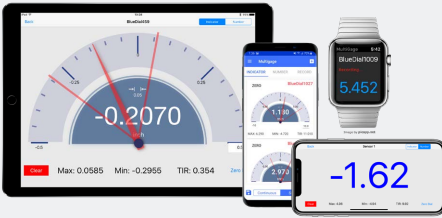


MultiGage Reader is an app developed for users to simultaneously connect and read from multiple Motionics wireless measurement devices on an iOS or Android device.

The MultiGage Reader app is able to connect to multiple Motionics Bluetooth measurement devices (14 on iOS, 8 on Android) and receive readings from all of them at the same time. Each device will be assigned an individual panel to display measurement reading, max, min, and TIR.



## iOS/ANDROID COMPATIBILITY

MultiGage is compatible with iPhone, iPad, Apple Watch, and Android devices, allowing you to view and record measurements wirelessly from your mobile device. Saved measurements can be exported in a CSV file for further analysis.

## MULTIPLE DEVICE CONNECTIVITY

The MultiGage Reader app allows you to connect to multiple devices (14 on iOS, 8 on Android). Each device is displayed in an individual panel so that you can check the readings of all devices in one frame simultaneously.

## DATA PLOTTING

The Data Plot option helps you to show the collected data from the device in graph form. You can pan/zoom in/out the graph, switch between line & point display modes and add threshold lines to the graph

## PROBE METER

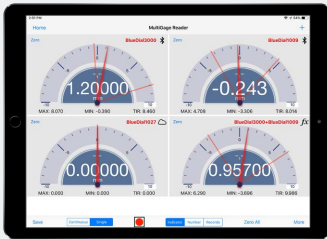
The Probe Meter feature displays device reading in an analog form. Probe needle rotates as device reading changes. There are two Max & Min handles indicating maximum and minimum values the device has reached. It also allows the user to change the range simply by typing the number in the box on the right side. You can also change to numerical display of the reading.





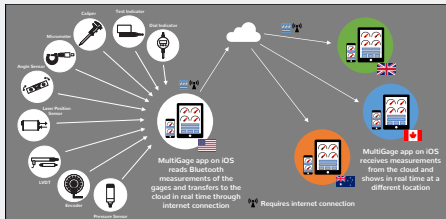
## GO/NG JUDGMENT

The GO/NG Judgment feature allows the user to set upper & lower thresholds for a device so the panels can change color to indicate whether the reading is within the tolerance.



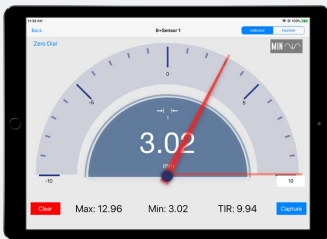
## CUSTOMIZABLE CALCULATOR

The customizable calculator feature automatically converts measurement readings to desired metrics based on any equation entered by the user. Calculator sensors can be added to sensor panels for data collection together with Bluetooth sensors.



## CLOUD DATA STREAMING

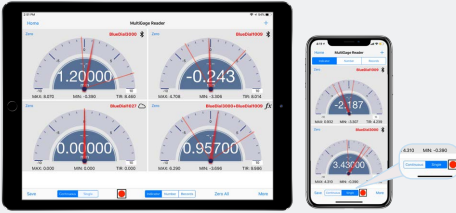
Once enabled, this feature pushes measurement readings to the cloud server in real time and allows other devices to access data from anywhere worldwide. Cloud sensors can be added to sensor panels for data collection together with Bluetooth sensors.



## MAX/MIN/TIR PEAK HOLD

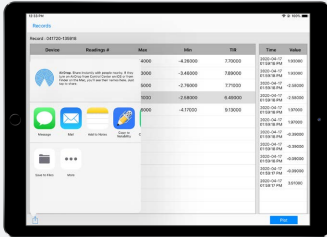
The user can decide to display real-time device value or turn on the peak hold option to see Max/Min/TIR value of the device. It's a handy feature for facilitating processes such as bore measurement and OD measurement.





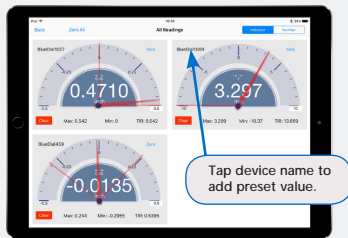
## CONTINUOUS & SINGLE CAPTURE MODE

This feature allows the user to capture data points either at a single moment through tapping the record button, or continuously. You can switch between the two modes using the slider on the bottom.



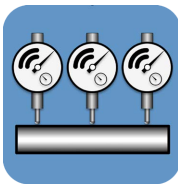
## CSV EXPORT

Once measurements have been taken, the recorded measurements can be saved locally and exported as a CSV for further analysis. These can be sent via email, Airdrop, etc.



## PRESET VALUES

A preset value can be directly added to a gage reading to convert relative measurements to absolute values. Simply tap on the device name and add a preset value.



## Download MultiGage for free on the App Store or Google Play Store

Scan the QR code below for more information, or visit us at [motionics.com/product/multigage-reader/](http://motionics.com/product/multigage-reader/)

