



Procore Certification

Table of Contents

- [Overview](#)
- [Courses](#)
- [Tutorials](#)
- [FAQ](#)
- [Release Notes](#)

Procore's Certification Program provides a more efficient and engaging learning experience for our users as they will be able to be trained on how to sufficiently use Procore to perform their particular job role on any construction project. Each course is self-paced and teaches the fundamentals of how to use each relevant tool in Procore (e.g. RFIs, submittals, drawings, etc.) to perform common tasks as well as emphasizes overall best practices. The role-based courses also train users on how to perform common actions using Procore's iOS/Android mobile application. It's recommended that you leverage each of these certification courses to train any collaborator on your project that will be asked to perform actions using Procore.

- Comprehensive and streamlined learning paths where training curriculum is specifically tailored to satisfy job role requirements
- Flexible, self-paced courses. Learn at your convenience. Complete course material over multiple user sessions where learning progress is automatically saved.
- Earn a verifiable certificate upon course completion ([view example](#))
- Earn a verifiable certificate upon course completion ([view example](#))
- Earn a verifiable certificate upon course completion ([view example](#))
- Earn a verifiable certificate upon course completion ([view example](#))
- Earn a verifiable certificate upon course completion ([view example](#))
- Earn a verifiable certificate upon course completion ([view example](#))
- Earn a verifiable certificate upon course completion ([view English example](#))
- Add your certificate to your LinkedIn profile to showcase your Procore skillset to your professional network
- Designated operations managers can track the learning progress of each team member

Popular Tutorials [\(view all\)](#)

1. [Add Your Procore Certified Certificate to Your LinkedIn Profile](#)
2. [Log in to Procore Certification](#)
3. [Download Your Procore Certified Certificate](#)
4. [Join the Procore Certified User Group on LinkedIn](#)

5. [Download Certification Video Scripts](#)

Top FAQ [\(view all\)](#)

1. [How do I view incomplete certification or continuing education lessons?](#)
2. [Where is the Procore Certification course that I'm looking for?](#)
3. [Why am I getting the error "Missing authentication cookie" when viewing certification lessons?](#)
4. [How do I check what Procore tools are included with my Procore account?](#)
5. [Why am I unable to log in to the Procore Certification site?](#)

Quick Links

- [All Procore Certification Courses](#)
- [All Procore Certification Courses](#)
- [All Procore Certification Courses](#)
- [All Procore Certification Courses](#)
- [All Procore Certification Courses](#)
- [All Procore Certification Courses](#)
- [All Procore Certification Courses](#)
- [All Procore Certification Courses](#)
- [All Procore Certification Courses](#)
- [All Procore Certification Courses \(English\)](#)

Tip

Are you not yet a Procore collaborator or user? See [How do I sign-up for Procore Certification if I do not have Procore login credentials?](#)

All Procore Training

[Procore Tool Training](#)

Learn each Procore tool individually and in-depth.

[Product Certifications](#)

Become Procore-Certified with role-based product courses.

[Advanced Training](#)

Dive deeper into Procore with our advanced courses.

[Procore Tool Training](#)

Learn each Procore tool individually and in-depth.

[Product Certifications](#)

Become Procore-Certified with role-based product courses.

[Procore Tool Training](#)

Learn each Procore tool individually and in-depth.

[Product Certifications](#)

Become Procore-Certified with role-based product courses.

[Procore Tool Training](#)

Learn each Procore tool individually and in-depth.

[Product Certifications](#)

Become Procore-Certified with role-based product courses.

[Procore Tool Training](#)

Learn each Procore tool individually and in-depth.

[Product Certifications](#)

Become Procore-Certified with role-based product courses.

[Procore Tool Training](#)

Learn each Procore tool individually and in-depth.

[Product Certifications](#)

Become Procore-Certified with role-based product courses.

[Advanced Training](#)

Dive deeper into Procore with our advanced courses.

[Procore Tool Training](#)

Learn each Procore tool individually and in-depth.

[Product Certifications](#)

Become Procore-Certified with role-based product courses.

[Procore Tool Training](#)

Learn each Procore tool individually and in-depth.

[Product Certifications](#)

Become Procore-Certified with role-based product courses.

[Procore Tool Training](#)

Learn each Procore tool individually and in-depth.

[Product Certifications](#)

Become Procore-Certified with role-based product courses.

[Procore Tool Training \(English\)](#)

Learn each Procore tool individually and in-depth.

[Product Certifications \(English\)](#)

Become Procore-Certified with role-based product courses.

[Advanced Training \(English\)](#)

Dive deeper into Procore with our advanced courses.

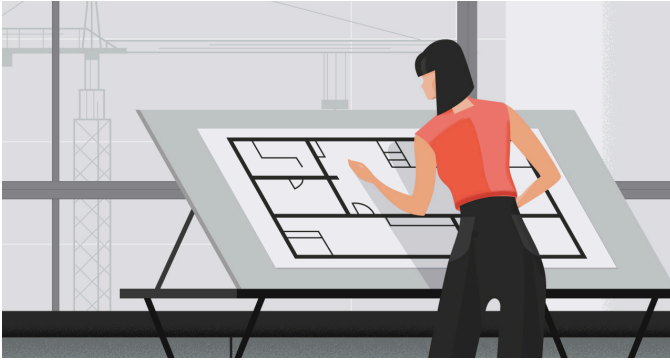
Product Certifications by Role

Admin

[Click here](#) to learn Procore's Project Management tools as a Procore Administrator.

Architect

[Click here](#) to learn how to use Procore's tools as an architect and discover best practices.



BIM Manager

[Click here](#) to learn how to improve project predictability by taking 3D models out of the office and putting them in the hands of the people installing and validating work in the field.



Engineer

[Click here](#) to learn how to use Procore's tools as an engineer and discover best practices.

Estimator

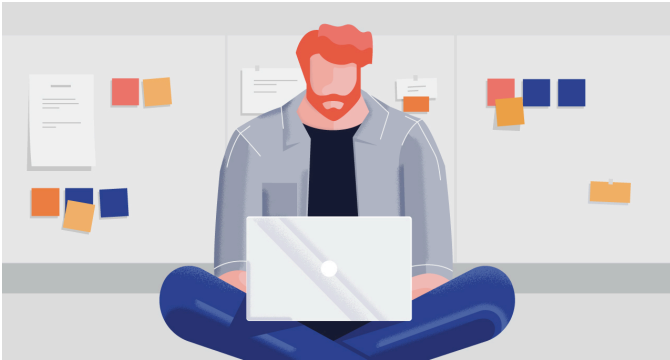
[Click here](#) to learn how to use Procore's Estimating tools and discover best practices.

Field Worker

[Click here](#) to learn how to use Procore's tools as a field worker and discover best practices.

Project Manager

[Click here](#) to learn how to use Procore's tools as a project manager and discover best practices based on your company type.



Student

[Click here](#) to learn the basics of Procore and discover best practices for the tools within Procore.

Subcontractor

[Click here](#) to learn how to use Procore's tools as a subcontractor and discover best practices.

Superintendent

[Click here](#) to learn how to use Procore's tools as a superintendent and discover best practices.

- [Add Your Procore Certified Certificate to Your LinkedIn Profile](#)
 - [Change Your Email Address in Procore Certification](#)
 - [Change your Name in Procore Certification](#)
 - [Download Certification Video Scripts](#)
 - [Download Your Procore Certified Certificate](#)
 - [Join the Procore Certified User Group on LinkedIn](#)
 - [Log in to Procore Certification](#)
-
- [Can I integrate my LMS with Procore Certification?](#)
 - [Can I watch Procore Certification and Continuing Education courses from my mobile device?](#)
 - [How do I change my name or email address in Procore Certification?](#)
 - [How do I check what Procore tools are included with my Procore account?](#)

- [How do I download a CSV of my company's Procore Certification learner records?](#)
- [How do I sign-up for Procore Certification if I do not have Procore login credentials?](#)
- [How do I view incomplete certification or continuing education lessons?](#)
- [Is there a minimum passing score for Procore Certification quizzes?](#)
- [Superuser: Can customers create custom LMS courses?](#)
- [Superuser: How do I log in as a user in Skilljar?](#)
- [Superuser: How do I log in to Skilljar as an Admin?](#)
- [Superuser: Why are there duplicate groups in Skilljar for the same company?](#)
- [Superuser: Why are there two domains for Procore Certification?](#)
- [Where is the Procore Certification course that I'm looking for?](#)
- [Why am I getting the error "Missing authentication cookie" when viewing certification lessons?](#)
- [Why am I having problems playing training videos?](#)
- [Why am I unable to log in to the Procore Certification site?](#)
- [Why are my courses not showing up in my Procore Certification profile?](#)
- [Why are my training courses missing?](#)
- [Why can't I log in to my Certification Analytics Dashboard?](#)
- [Why is my Procore Certified Certificate missing?](#)
- [Why is the percentage complete less than 100% for a Procore Certification course?](#)
- [Why was the "Procore Fundamentals" training course deprecated?](#)
- [Why were the "Deep-Dive Training" courses deprecated?](#)

You can view changes to Procore's Certification Program at www.learn.procore.com/release-notes.

You can view changes to Procore's Certification Program at <https://learn.procore.com/page/release-notes-de>.

You can view changes to Procore's Certification Program at <https://learn.procore.com/page/en-au>.

You can view changes to Procore's Certification Program at <https://learn.procore.com/page/release-notes-en-ca>.

You can view changes to Procore's Certification Program at <https://learn.procore.com/page/release-notes-en-gb>.

You can view changes to Procore's Certification Program at <https://learn.procore.com/page/release-notes-es-la>.

You can view changes to Procore's Certification Program at <https://learn.procore.com/page/release-notes-fr-ca>.

You can view changes to Procore's Certification Program at <https://learn.procore.com/page/release-notes-fr>.

You can view changes to Procore's Certification Program at <https://learn.procore.com/page/release-notes-zh-sg>.

You can view changes to Procore's Certification Program at www.learn.procore.com/release-notes.