

iexplora!

**NEXT GREAT
MINDS
CAMPAIGN**

**Cradle through Career
STEAM Learning Campus**

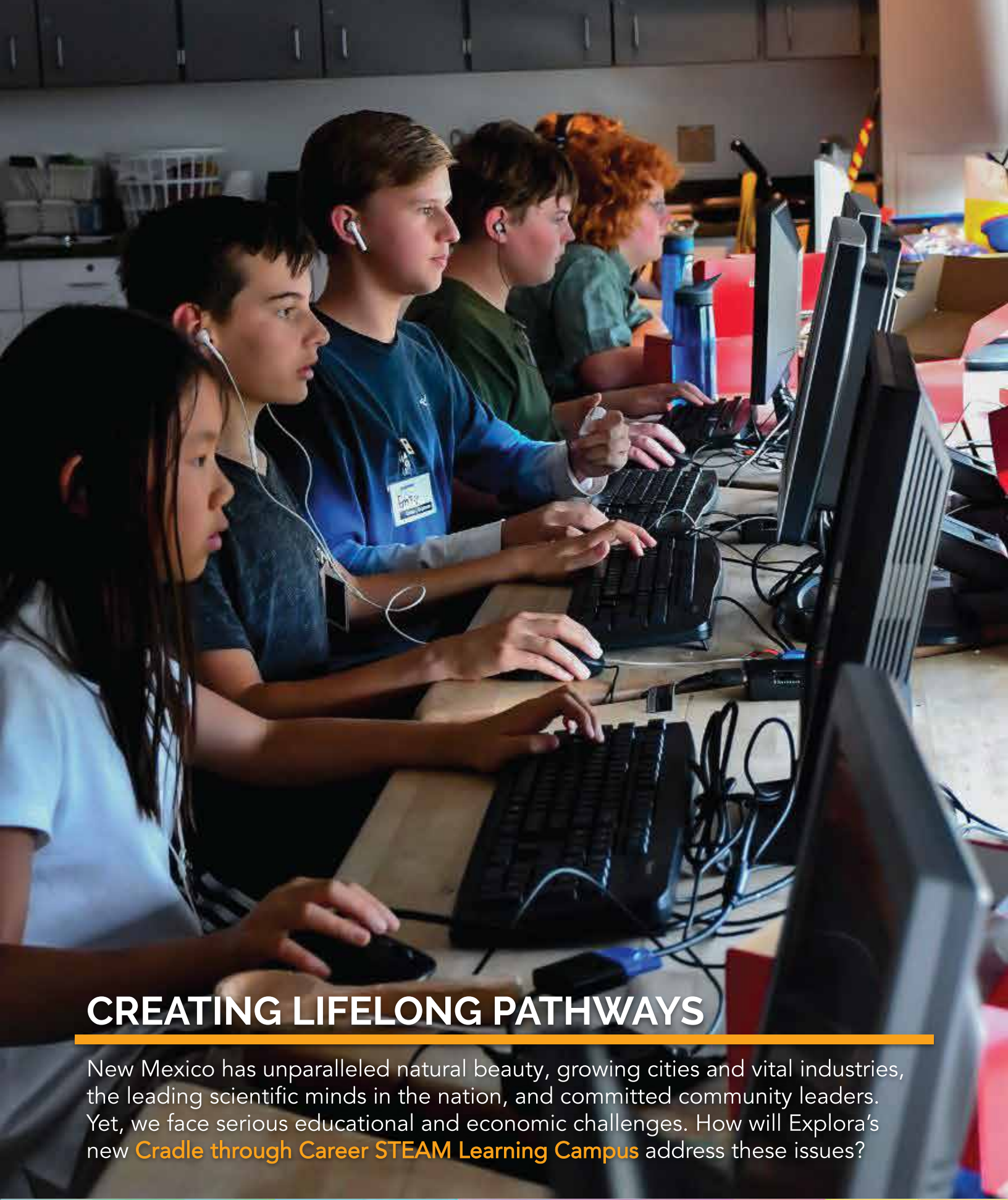




Engaging, Educating, & Employing New Mexico's Next Great Minds!

Because ALL of our youth deserve equitable access to opportunity, Explora's Cradle through Career STEAM Learning Campus has been co-developed with the community to—

- Improve educational outcomes
- Drive economic development
- Increase family and community prosperity



CREATING LIFELONG PATHWAYS

New Mexico has unparalleled natural beauty, growing cities and vital industries, the leading scientific minds in the nation, and committed community leaders. Yet, we face serious educational and economic challenges. How will Explora's new **Cradle through Career STEAM Learning Campus** address these issues?

New Mexico currently ranks 50th in education and overall child well-being (KIDS COUNT 2019).

Explora's new Campus will build long term solutions that start early and keep children on STEAM pathways to drive economic and educational outcomes.

The achievement gap between kids in poverty and their more economically advantaged peers is evident as early as the child's first 18 months (Hart & Risley, 1995).

Explora's new Campus will provide high-quality early education for low-income families. Our little ones will have access to educational experiences that eliminate achievement and opportunity gaps, while their parents finish school and attend work to support their young families.

One-fifth of New Mexico's population lives in poverty, ranking it second worst in the nation. Better preparing New Mexicans for local, high-paying STEAM jobs will increase prosperity.

Explora's new Campus will prepare students for the 21st-century workforce and STEAM careers, employ underrepresented young adults in STEAM-related jobs, accelerate innovation and entrepreneurship, and generate private investment.



WHY EXPLORA?

Kids are out of school much more than they're in school. In fact, at high school graduation, a student will have spent only 9% of his or her waking hours in school (*Sosniak, 2001*).

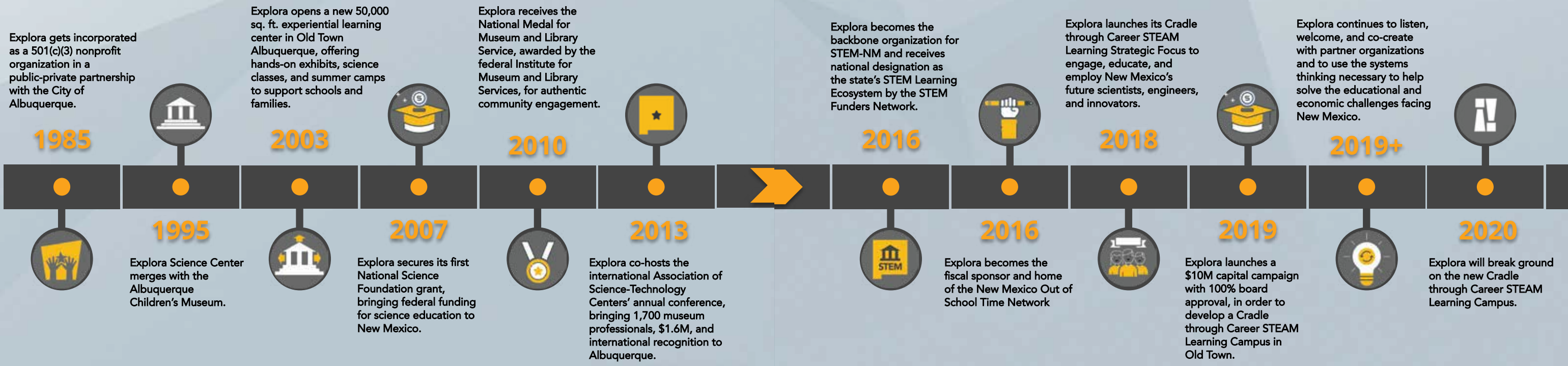
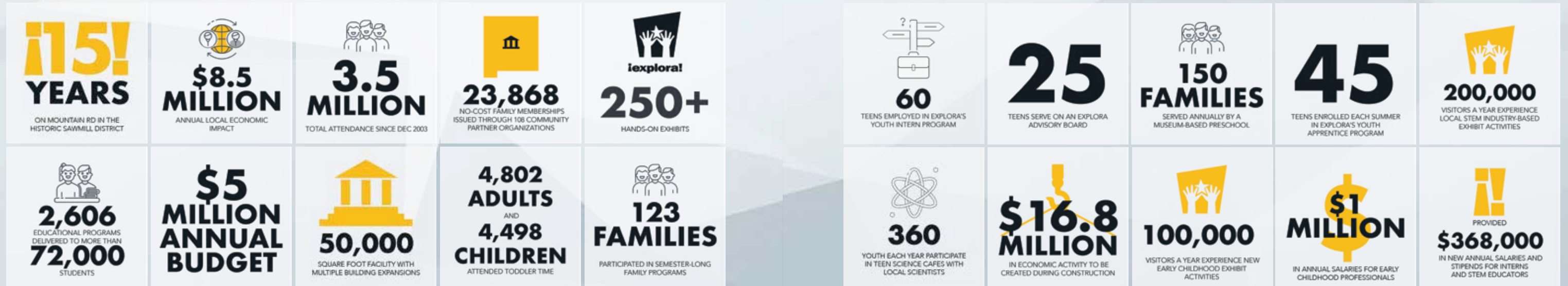
Experiences outside of school—at places like Explora—are essential components of our youth's education and development. Every child deserves access to spaces where he or she can learn and grow, question and experiment, succeed and fail, and journey along pathways to STEAM careers.

That's why Explora is developing a **Cradle through Career STEAM Learning Campus** to house the award-winning Explora science center and children's museum, the new **Brillante** Early Learning Center, and **X Studio**, a space where teens and young adults can move from scientific play into serious work in STEAM jobs that have the potential to end generational cycles of poverty.

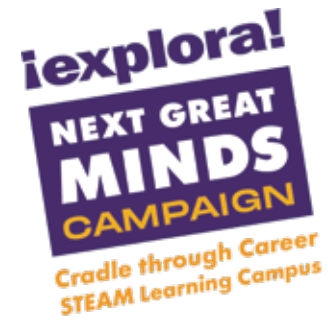


A TRUSTED ORGANIZATION, PAST, PRESENT, AND FUTURE

EXPANDING IMPACT THROUGH OUR NEW STEAM LEARNING CAMPUS



THERE ARE OVER 570,000 REASONS TO SUPPORT THIS CAMPAIGN



They ask lots of questions. They love to explore and experiment. They have varied backgrounds, interests, and abilities, but they ALL crave knowledge and safe places to play and learn. They are our future. New Mexico's 570,000 young people deserve the best and most innovative education possible. Explora needs your help to raise \$10M to make this vision a reality for the state's **Next Great Minds**.



As phase one, Explora will open **X Studio** in early 2021 to support New Mexico's students, especially low-income students of color, on STEAM career pathways. **X Studio** is a world-class STEAM education and workforce development center, connecting local teens and young adults with STEAM professionals, employers, and intensive study and work experiences.



Brillante, phase two of the project, will be a Reggio-inspired, museum-based early learning center that serves as the lab school for local higher education institutions and provides high-quality early childhood STEAM education that can close the opportunity and achievement gaps in our state.

STEAM EDUCATION AND EXPERIENCES THAT WILL EMPOWER OUR **NEXT GREAT MINDS**





- | | |
|--|---------------------------------|
| 1 Rail Spur STEAM Learning Corridor | 5 Pedestrian Walkways |
| 2 Possible Future Parking;
Community Resource Center | 6 X Studio |
| 3 Brillante Early Learning Center | 7 Outdoor Learning Space |
| 4 Connection to Tiguex Park | 8 Explora |
| | 9 Tiguex Park Open Space |

A NEW CAMPUS IN OLD TOWN

For the past 15 years, Explora has thrived in Old Town, Albuquerque, adjacent to exemplary museums, art centers, and parks, and the Old Town, Sawmill, and Wells Park neighborhoods, all of which have a long, proud history. Explora is honored to be part of this community.

After years of planning, Explora will expand on our current site and on an additional 4.5-acre parcel across 18th Street. This expansion will allow Explora to greatly increase the number of community members we serve and double our program space. The **Next Great Minds Campaign** will support our immediate needs for expansion, as well as planned growth over the next ten years.



HOME TO EDUCATION FOR THE FUTURE OF NEW MEXICO

X Studio will be a new 8,000-square-foot STEAM education and workforce development center. It will provide intensive physics, chemistry, robotics, design, film, and coding programs; engineering and fabrication opportunities in a Maker Space with Makers-in-Residence; mentor programs and events that bring together scientists, engineers, and young adults to articulate pathways to STEAM careers; interactive exhibitions highlighting the local STEAM industry and job opportunities; an expanded internship program, which will employ 60 young adults; and more!



STARTING EARLY TO MAKE STEAM LEARNING ACCESSIBLE TO ALL



Brillante will be the state's only full-time museum-based STEAM early learning center. It will be inspired by the world-famous Reggio Emilia method and will serve over 100 infants, toddlers, and young children with rich STEAM learning experiences.

Brillante also will develop our state's next generation of early childhood development professionals, serving as the lab school for local higher education institutions. Additionally, it will provide ongoing professional development for early childhood educators from across New Mexico and state-of-the-art facilities, like a materials-rich atelier, that can be used by other local centers.

+ Invest

Invest in educational resources for low-income families, supporting parents as they finish their own schooling and work to make better lives for their children.

+ Develop

Nurture early development of cognitive and social skills in children from birth to age five, closing the opportunity and achievement gaps.

+ Sustain

Sustain early development with effective education through adulthood, keeping children on pathways to careers.

= Gain

Gain a more capable, productive, and valuable workforce that pays dividends to New Mexico for generations to come. Investing in early childhood education has been proven to have the highest return on investment. (heckmanequation.org)



Help us build the future home of New Mexico's **Next Great Minds**



Engaging, Educating, Employing our Next Great Minds in STEAM

Campaign for a Cradle through Career STEAM Learning Campus



**JOIN US IN ENGAGING, EDUCATING, AND EMPLOYING
NEW MEXICO'S NEXT GREAT MINDS IN STEAM!**

Together we can improve access to high-quality early childhood education and start our kids on STEAM pathways early, prepare our youth for high-paying STEAM jobs that can impact New Mexico's economic well-being, and increase family and community prosperity.

Can We Count on You?



Joe Hastings
Executive Director
jhastings@explora.us

Kristin Leigh
Deputy Director & Director of
Community Engagement
kleigh@explora.us



**THE NEXT GREAT MINDS CAPITAL CAMPAIGN HAS SUPPORT
FROM 100% OF THE EXPLORA BOARD OF DIRECTORS.**

CAPITAL CAMPAIGN CHAIR, 2019

Steve Rottler, Past-President, Director, and Fundraising Committee Chair.
Former Deputy Laboratories Director and Executive Vice President, National Security Programs, Sandia National Labs

BOARD CHAIR, 2019

Alexis Kerschner Tappan, President and Executive Committee Chair.
President, AKT Communications

FUNDRAISING COMMITTEE, 2019

Dale Alverson, Director
Professor Emeritus and Regents' Professor, UNM

Hilma Chynoweth, Director
Director of Business Development, Garcia Automotive Group

Jane Flax, Director & Director Emerita
Community Volunteer

Rachel Gupton, Director
Scientist, Sandia National Labs

Dave Seely, Director and Capital Campaign Advisory Group Chair
Former President and CEO, Kirtland Federal Credit Union