



Prolonged Cold Weather Briefing

February 13, 2026
4:00 PM EST

For Delaware, New Jersey, Eastern Pennsylvania, Eastern Shore of Maryland

Daily Cold Weather Briefing

→ As of 4 PM February 13, 2026

NEW

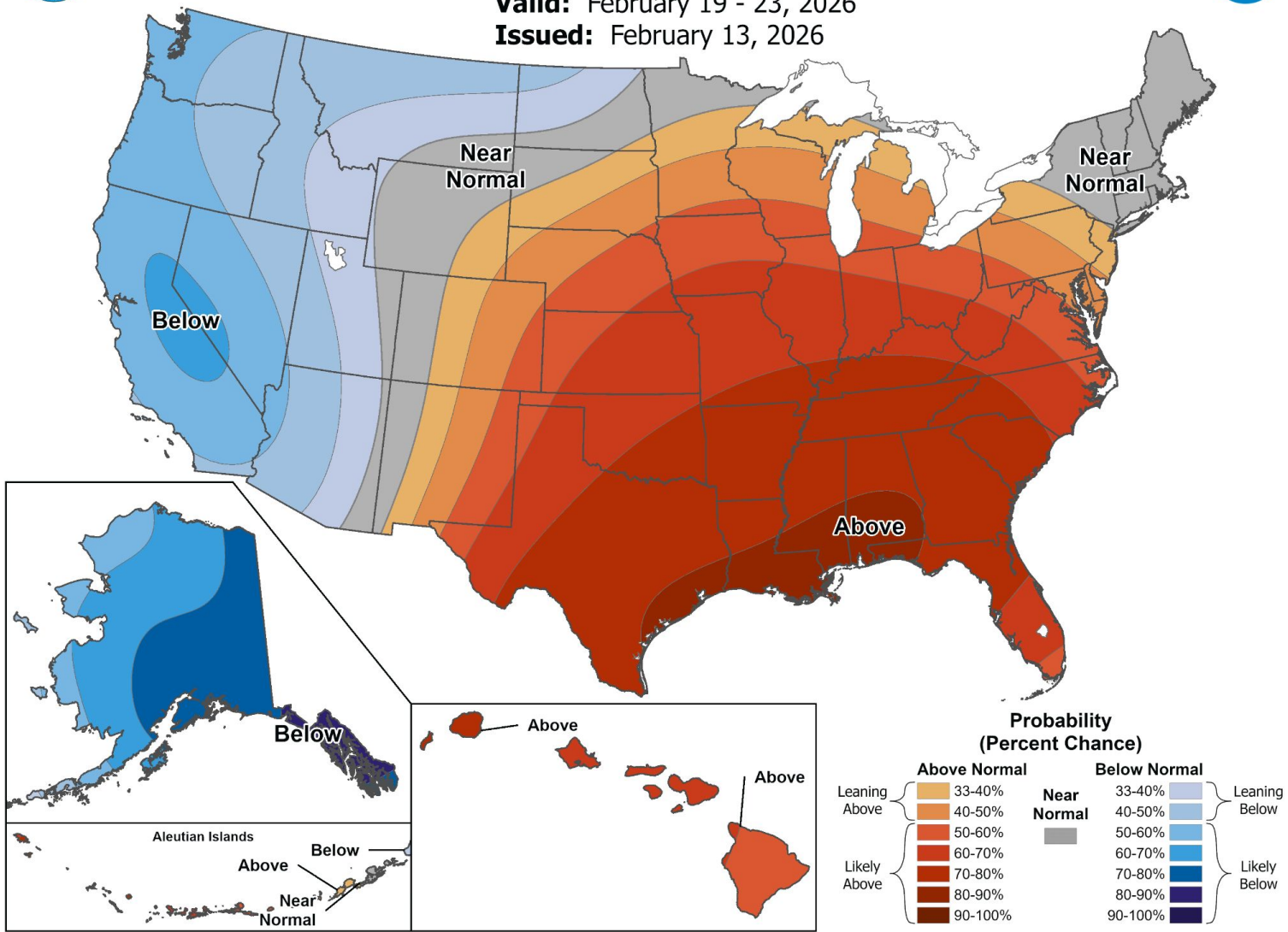
Important Updates

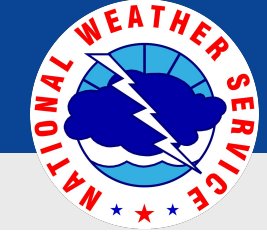
- A coating of snow is possible in some areas late tonight.
- We continue watching a potential system for the Sunday into Monday timeframe. Uncertainty remains in the exact system's track with potential impacts ranging from rain and snow to little or no impact.
- High confidence in above normal temperatures next week.



6-10 Day Temperature Outlook

Valid: February 19 - 23, 2026
Issued: February 13, 2026





Chances of snow this weekend

February 13, 2026
4:00 PM EST

Tonight and late Sunday/early Monday

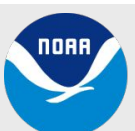
Key Messages:

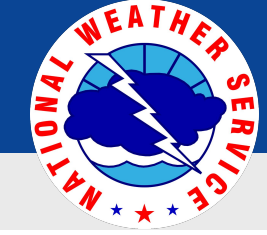
Late Tonight

- Light snow showers expected late tonight, mainly north and northeast of Philadelphia.
- Cold temperatures overnight may result in untreated roads becoming slippery by dawn Saturday.
- While a coating is possible in some areas, the probability of 1" or more is less than 15% across our entire region.

Late Sunday/early Monday

- A low pressure system will pass to our south and southeast late Sunday into early Monday. Exact track remains uncertain.
- Marginal temperatures may result in the northern fringe of the system seeing some wet snow, while closer to the center, rain is more likely.
- Location and amount of any snowfall remains highly uncertain, but a few inches of wet snow is a low probability potential impact.



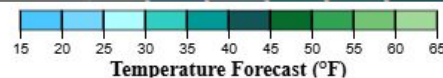


7 Day Temperature Forecast

February 13, 2026
4:00 PM EST

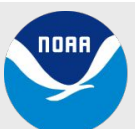
Temperature (°F) Forecast

		2/14	2/15	2/16	2/17	2/18	2/19	2/20	Max
		Sat	Sun	Mon	Tue	Wed	Thu	Fri	Min
Allentown, PA	High	41	38	41	46	46	44	42	46
	Low	20	21	27	30	34	34	30	20
Atlantic City, NJ	High	43	38	42	45	46	46	45	46
	Low	26	29	33	33	35	37	33	26
Dover, DE	High	48	41	45	51	54	52	49	54
	Low	24	28	33	33	38	41	36	24
Easton, MD	High	49	45	47	51	54	54	50	54
	Low	25	29	34	34	38	42	37	25
Georgetown, DE	High	51	45	47	52	56	56	51	56
	Low	24	30	36	34	38	43	37	24
Hackettstown, NJ	High	42	38	42	46	46	42	41	46
	Low	19	21	26	29	33	33	28	19
Mount Pocono, PA	High	34	33	36	43	39	36	32	43
	Low	18	19	23	28	29	27	23	18
Philadelphia, PA	High	44	40	44	49	52	50	46	52
	Low	25	26	31	33	37	40	36	25
Reading, PA	High	43	40	43	49	51	47	44	51
	Low	23	24	30	31	37	37	32	23
Toms River, NJ	High	44	38	43	49	50	47	44	50
	Low	22	24	31	31	33	36	31	22
Trenton, NJ	High	43	40	43	49	51	47	45	51
	Low	22	23	29	31	35	38	33	22
Wilmington, DE	High	45	41	44	50	52	51	47	52
	Low	24	27	32	33	37	39	35	24



Week 1 Forecast:

- Temperatures likely to rise above normal next week.
- For the latest forecast for your location, visit www.weather.gov/phi





8-14 Day Temperature Outlook

February 13, 2026
4:00 PM EST



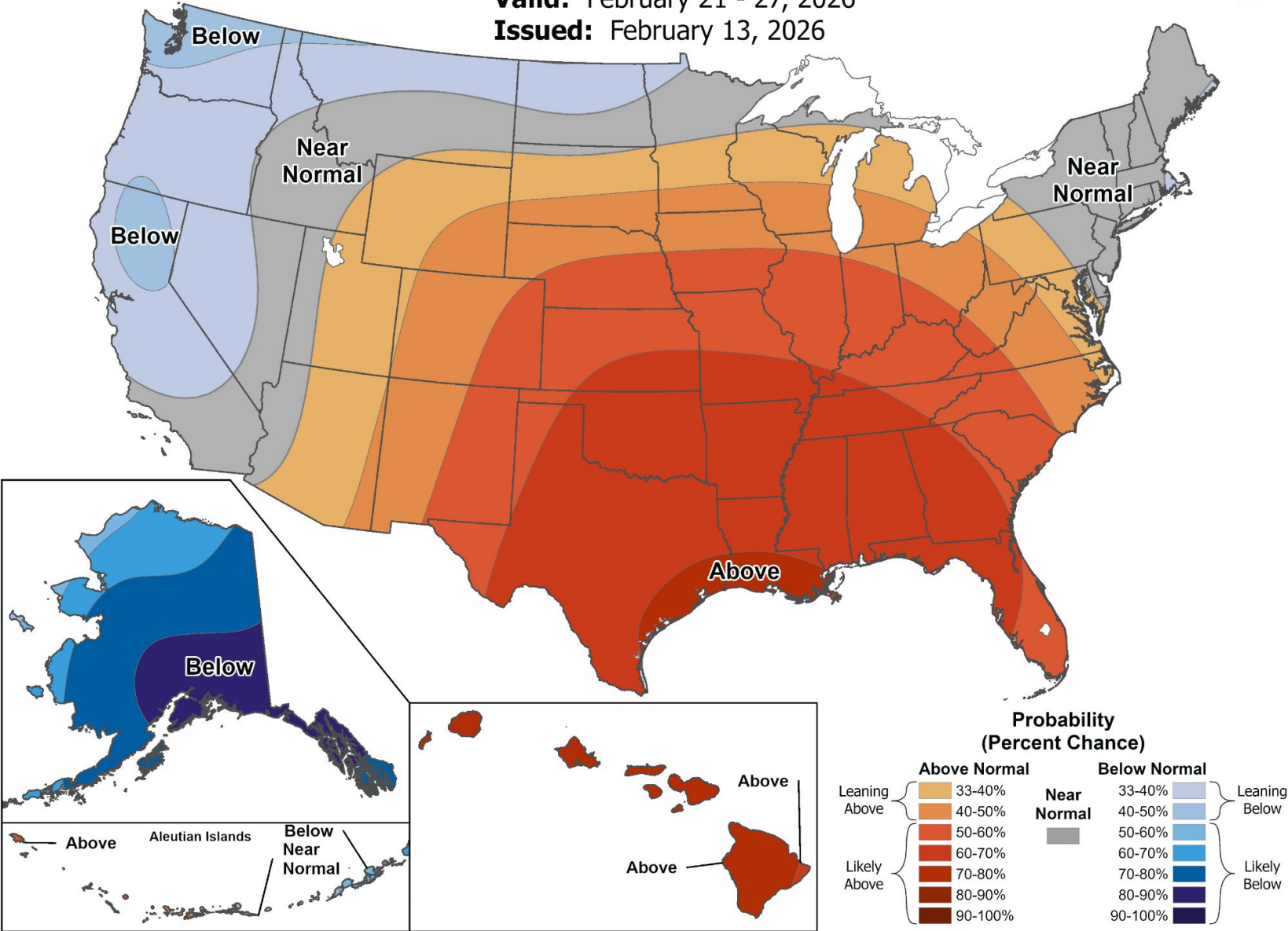
8-14 Day Temperature Outlook

Valid: February 21 - 27, 2026
Issued: February 13, 2026



Week 2 Temperature Outlook:

- Temperatures towards the end of the month are outlooked as near normal.
- Normal highs range from the lower 30s to upper 40s.
- Normal lows range from the mid teens to low 30s.





Mid-Atlantic Ice Analysis

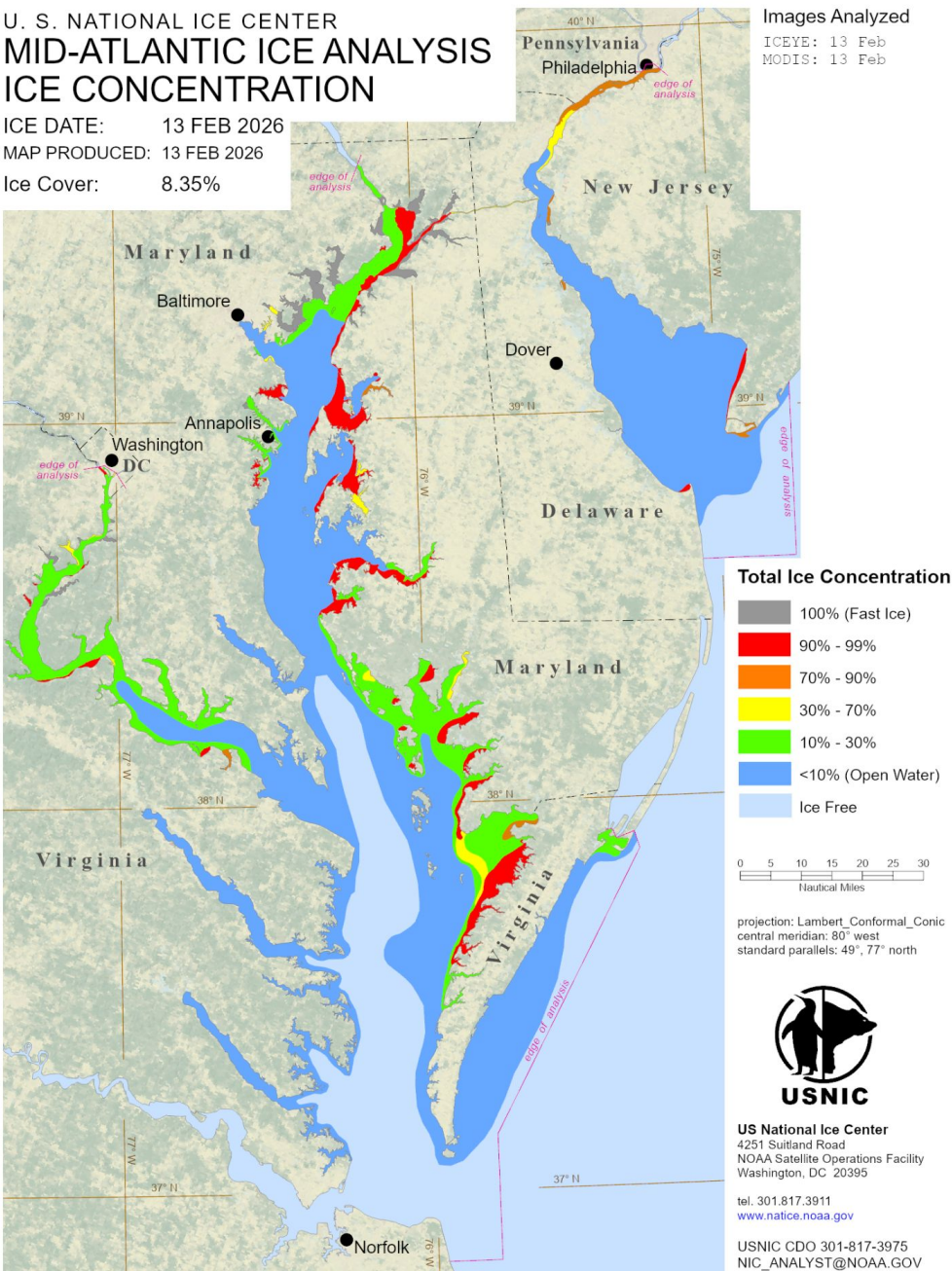
February 13, 2026
4:00 PM EST

From the U.S. National Ice Center

U. S. NATIONAL ICE CENTER
MID-ATLANTIC ICE ANALYSIS
ICE CONCENTRATION

ICE DATE: 13 FEB 2026
MAP PRODUCED: 13 FEB 2026
Ice Cover: 8.35%

Images Analyzed
ICEYE: 13 Feb
MODIS: 13 Feb



Latest Mid Atlantic Ice Analysis:

- Marine ice persists, with reduction now ongoing.
- **U.S. National Ice Center updates this map every weekday (typically in the afternoon).**
- Marine and river ice will persist along the immediate Atlantic coast, Raritan Bay, Delaware Bay, and Delaware River. Daytime temperatures warming well into the 30s to low 40s into next week will continue breaking up and melting the ice.
- **What remains of the areas of ice cover in Delaware Bay into the Delaware River as well as the bays will create navigation hazards.**
- The latest analysis and forecast is available at <https://usicecenter.gov/Products/MidAtlanticHome>



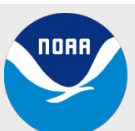


Summary of Impacts

February 13, 2026
4:00 PM EST

Key Messages:

- Light snow showers are expected late tonight mainly north and northeast of Philadelphia, which may drop a coating of fresh snow. Untreated surfaces may become slippery.
- Temperatures will be a bit milder this weekend, with highs in the 30s and 40s and lows in the teens and 20s.
- We continue watching a potential storm system late Sunday into early Monday, but uncertainty remains high. A few inches of wet snow are possible but not at all certain; it may be mostly rain and/or stay mostly south.
- Next week continues to look relatively mild, with highs in the 40s and 50s and lows in the 20s and 30s.
- Ice coverage on the waters continues to diminish, but some ice may linger on the more protected waters such as smaller bays and tidal rivers for some time.





Contact and Next Briefing Information

February 13, 2026

4:00 PM EST

For Delaware, New Jersey, Eastern Pennsylvania, and Eastern Shore of Maryland

Contact Information

Final Cold Weather Briefing

- If necessary, a new briefing may be issued tomorrow regarding the Sunday night snow potential
- Method: Email

Disclaimer

- Information contained in this briefing is time-sensitive
- Do Not Use After: 5:00 PM February 14, 2026

Web

- weather.gov/phi

Phone

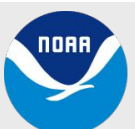
- (609)-261-6600

Facebook

- [NWSMountHolly](https://www.facebook.com/NWSMountHolly)

X

- [@NWS_MountHolly](https://twitter.com/NWS_MountHolly)



National Oceanic and
Atmospheric Administration

U.S. Department of Commerce

National Weather Service
Philadelphia/Mount Holly