

WH52

Wireless Alarm Hub

NEW ALARMS

V LINK



Overview

The WH52 is a PoE-powered VLink hub that extends wireless sensor coverage across sites of any size. It communicates with the BP32 or BP52 alarm panel over LAN, making it easy to add sensors at a distance from the panel. The WH52 has a built-in battery that provides at least 12 hours of backup.

Like other Verkada products, the WH52 is cloud-managed and natively integrates with other devices in the Verkada ecosystem. Through the Command web or mobile app, users can view live and historical sensor activity, as well as manage software-defined partitions. Organizations additionally benefit from automatic firmware updates and 24/7 support, ensuring their device is always operational and improving over time.

Key features

Easy installation

- Supports up to 160 Verkada wireless sensors
- LAN connection with alarm panel allows for coverage anywhere with an ethernet drop

Plug-and-play

- Automatically connects to Verkada wireless sensors that are within range – no manual pairing process needed

Cloud-managed

- View sensor activity, connection quality, and battery level in Command
- Automatic firmware updates for the latest features

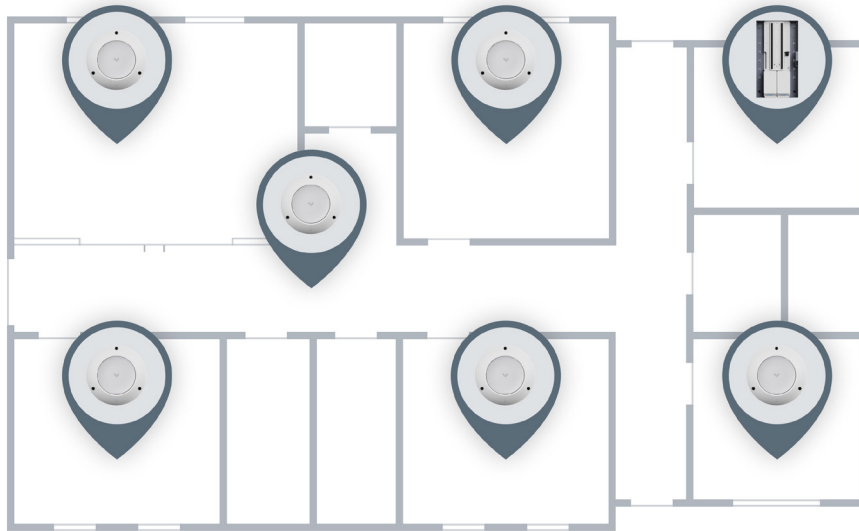
Highly available

- Withstands internet outages by communicating locally with the alarm panel
- Built-in battery provides 12 hours of backup



Easy to scale across any site

The WH52 hub makes it easy to scale wireless coverage across sites of any size. Because the WH52 simply needs to be on the same LAN as the alarm panel, the number of hubs is not limited by the number of ports on the panel. This allows for a virtually unlimited number of sensors at a site, and easy coverage at a distance from the panel.



Cloud-managed

Verkada's cloud-based management platform, Command, brings visibility and control at scale for alarm systems across multiple sites. For any wireless sensor at any site, users can remotely view live/historical activity, connection quality, and battery level.

Trinity High School | All Devices | All Statuses | + Add

West Hallway Hub (ONLINE) | WH52 Wireless Hub

- Classroom 101 Door Sensor (Wireless | Door Sensor) - Closed
- Classroom 102 Door Sensor (Wireless | Door Sensor) - Closed
- Classroom 103 Door Sensor (Wireless | Door Sensor) - Open**
- Classroom 104 Door Sensor (Wireless | Door Sensor) - Closed
- Classroom 105 Door Sensor (Wireless | Door Sensor) - Closed
- Break Room Door Sensor (Wireless | Door Sensor) - Closed
- West Entrance Door Sensor (Wireless | Door Sensor) - Open

Main Building Alarm Panel (ONLINE) | IP72 Alarm Panel

- Classroom 107 Door Sensor (Zone 1 | Door Sensor) - Open
- Classroom 108 Door Sensor (Zone 2 | Door Sensor) - Closed
- IDF Closet Door Sensor (Zone 3 | Door Sensor) - Closed
- Admin Office Door Sensor (Wireless | Door Sensor) - Closed

Classroom 103 Door Sensor (OPEN)
BR31 Door Sensor
1st Floor Partition

6:22:06 PM PST | Hallway Cam

Activity | Settings

| Activity | Time |
|----------|-------------------|
| Open | Today, 11:45am |
| Closed | Today, 11:00am |
| Open | Today, 10:43am |
| Closed | Today, 10:23pm |
| Open | Today, 10:04am |
| Closed | Yesterday, 5:23pm |
| Open | Yesterday, 5:05pm |
| Closed | Yesterday, 4:49pm |



WH52

Tech Specs

Power and network

| | | | |
|--------------------------------------|----------------------------------------------------------|-------------------------------|--------------------------------------------------------------------------------|
| Power Consumption | 4.4W standby, 14W maximum (83mA - 260mA current draw) | Uplink | 10/100 Mbps RJ45 port Must be on the same VLAN/subnet as the alarm panel |
| Power Input | IEEE 802.3af PoE | Wireless Communication | VLink sub-GHz transceiver Wireless repeating not supported |
| Backup Battery (Internal) | 2850 mAh 12 hours of backup with typical use | VLink Wireless Range | Please refer to the downstream device datasheet |

General

| | | | |
|-------------------------|--------------------------------------------------|-----------------------------------------------|------------------------------------------------------|
| Dimensions | Diameter: 6.1" (15.5 cm) Depth: 2.6" (6.7 cm) | Operating Temperature and Humidity | 32 to 113° F (0 to 45° C) 0-90% RH non-condensing |
| Tamper Detection | Yes | Warranty | 10 years |
| Certifications | FCC, IC, RCM, CE, UL/cUL/IEC 62368-1 | Weight | 1.9 lb (0.9 kg) |

Installation

| | | | |
|-----------------------------|------------------------------------------------------------------------------------------------------|-------------------------|-----------------------|
| Included Accessories | Mount plate, T10 Security Torx screwdriver, 3x machine screws, 4x wall screws, 4x wall anchors | Mounting Options | Wall or ceiling mount |
|-----------------------------|------------------------------------------------------------------------------------------------------|-------------------------|-----------------------|



Ordering Information

WH52 Wireless Hub

| Model Number | Description | Cost (MSRP) USD |
|--------------|-------------------|-----------------|
| WH52-HW | WH52 Wireless Hub | \$599 |