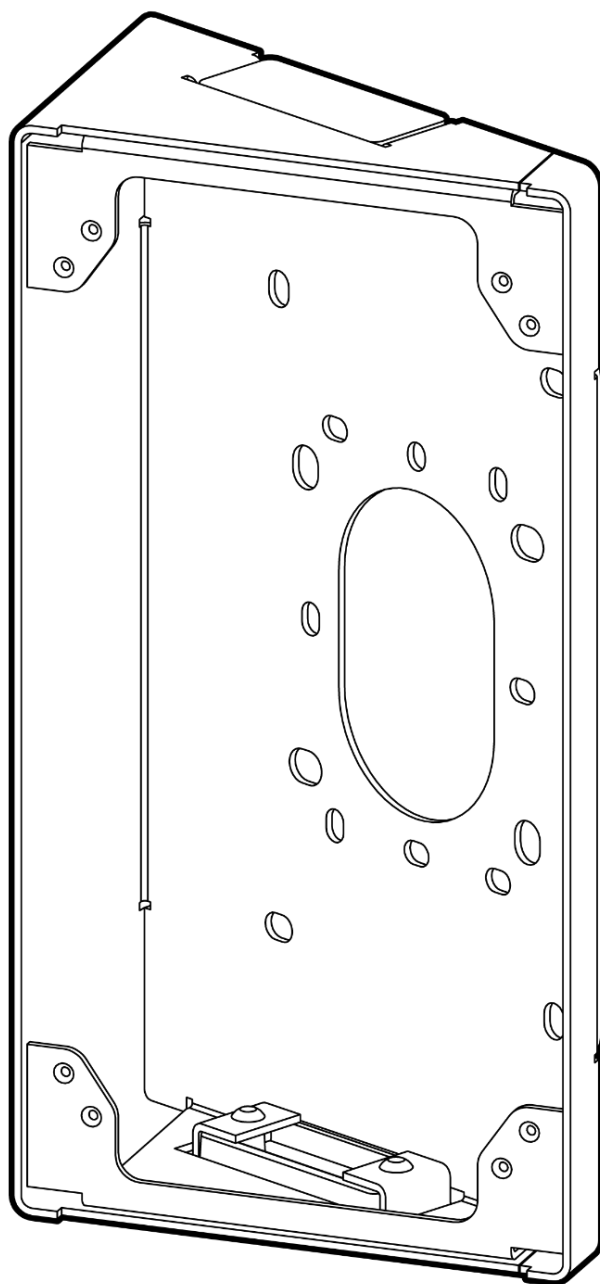


ACC-INT-ANGLE-2

Angle Mount for TD53



Document Details

Version

V1.0 20241106

(V1.0 published 20241106)

Firmware

Firmware version can be verified on Verkada

Command command.verkada.com.

Product Models

This install guide pertains to models

ACC-INT-ANGLE-2.

© Copyright 2024 Verkada Inc. All rights reserved.

Verkada and the Verkada logo are registered trademarks or service marks of Verkada Inc. ("Verkada"). All other trademarks are the property of their respective owners.

Verkada may make changes to this document at any time without notice. The information presented herein may be inaccurate or outdated, and Verkada is under no obligation to maintain it. ALL INFORMATION IS PROVIDED "AS-IS" AND WITHOUT ANY WARRANTIES, IMPLIED, EXPRESS, OR OTHERWISE. VERKADA DISCLAIMS LIABILITY FOR ALL DAMAGES, INCLUDING WITHOUT LIMITATION ANY DIRECT, INDIRECT, SPECIAL, INCIDENTAL, PUNITIVE, OR CONSEQUENTIAL DAMAGES, ARISING OUT OF USE OF THIS DOCUMENT.

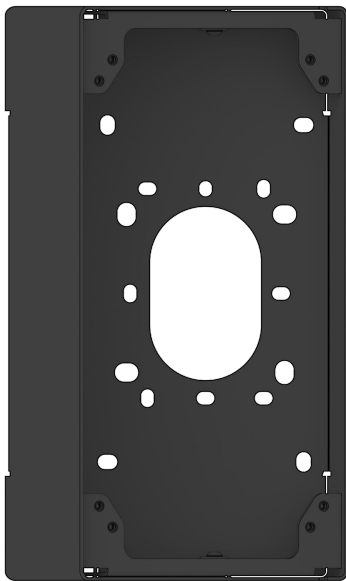
Any intellectual property rights relating to Verkada products are and shall remain Verkada's exclusive property. Use of any Verkada product is subject to Verkada's end user agreement or other executed agreement with Verkada. No license, either expressed or implied, to use or distribute any Verkada product is granted under this document.

This document may not be sold, resold, licensed or sublicensed and may not be transferred without Verkada's prior written consent. No part of this document may be reproduced in whole or in part without the express written consent of Verkada.

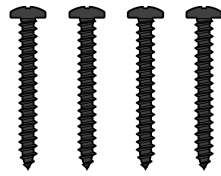


Introduction

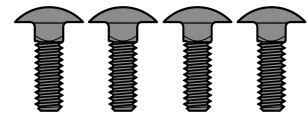
What's in the box



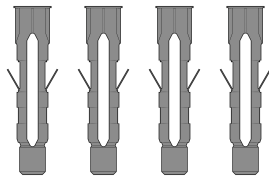
Angle Mount



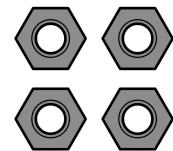
#10 Wall Screws (4 pcs)
Length: 1.5 in Drive: Phillips #2



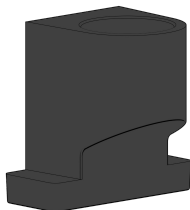
Carriage Bolts (4 pcs)
Length: 0.5"



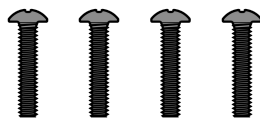
#10 Wall Anchors (4 pcs)
Drill Size: 1/4" (6mm)



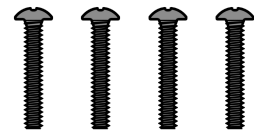
Hex Nuts (4 pcs)



Conduit Adapter
Thread: 3/4-14 NPT



#8-32 Junction Box Screws (4 pcs)
Length: 0.75" Drive: Phillips #2



#6-32 Junction Box Screws (4 pcs)
Length: 0.75 in Drive: Phillips #2

What you'll need

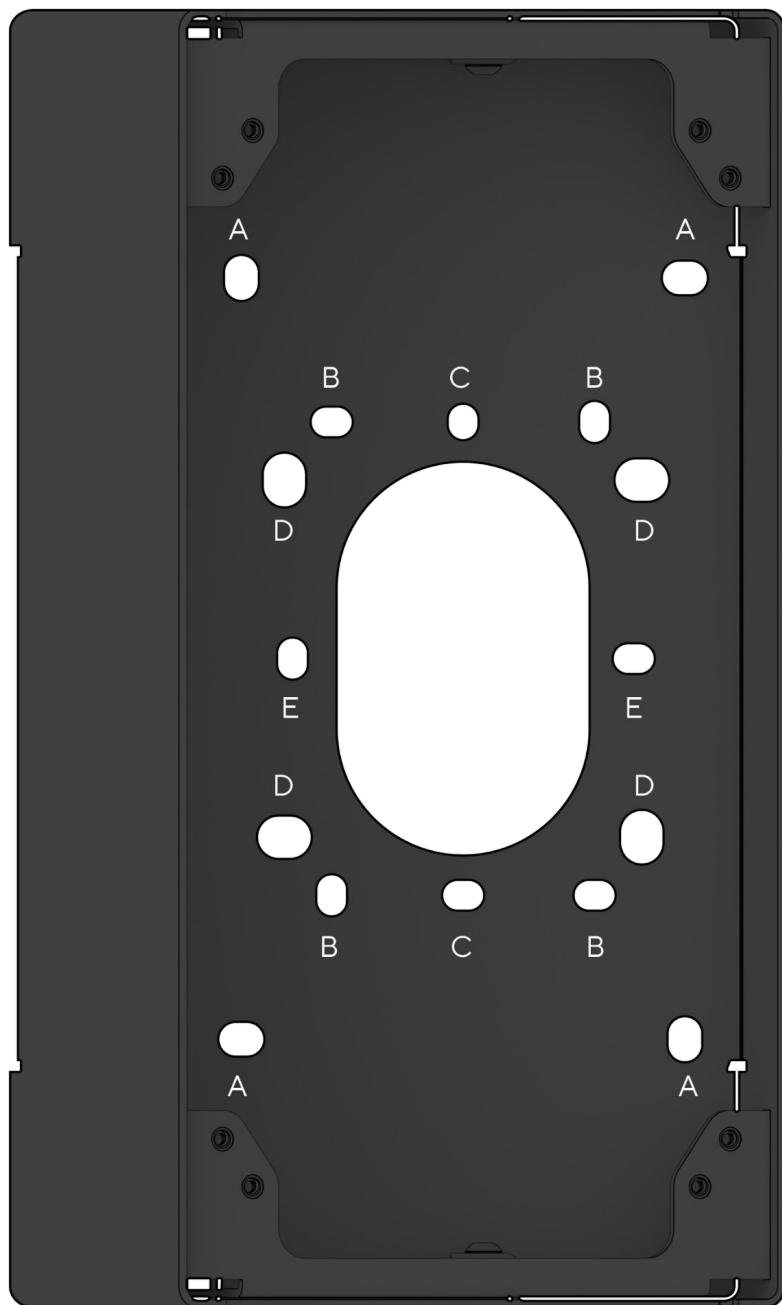
- TD53 Video Intercom
- A #2 Phillips screwdriver or power drill with a #2 Phillips driver bit
- 1/2 inch (12.7mm) drill bit, or larger, for routing cable through wall
- 1/4 inch (6mm) drill bit for wall anchor pilot holes
- 3/32 inch (2.4mm) drill bit for pilot holes

Compatible Products

- TD53 Video Intercom
- ACC-INT-HOOD-1



Overview



Hole Patterns

- A Direct wall mounting
- B Double gang junction box
- C U.S. Single gang junction box
- D Gooseneck mount
- E U.K. Single gang junction box

Installation

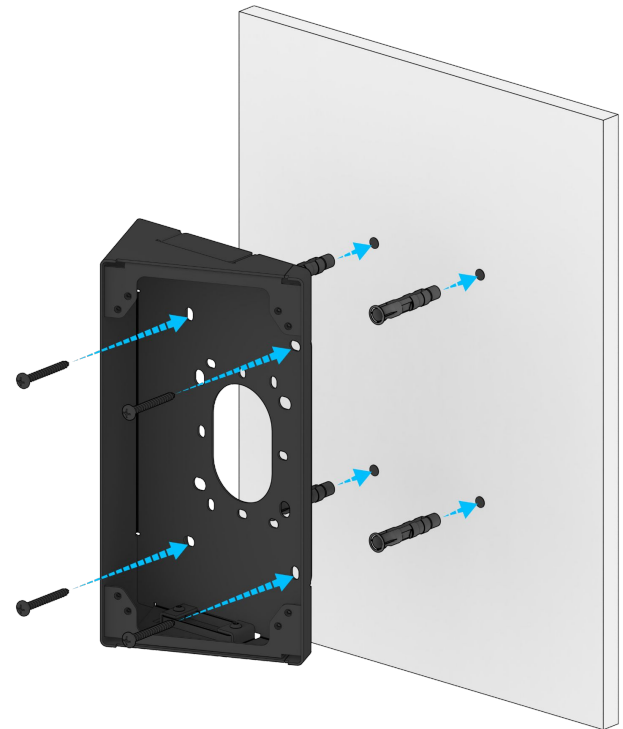
Mounting

For a solid material like wood or metal, drill 5/64 inch pilot holes. Drive mounting screws directly into the pilot holes using hole pattern A of the Angle Mount.

For drywall, plaster or masonry, separate wall anchors may be required.

For installation onto a junction box, use the corresponding mounting holes and provided machine screws.

For installation onto a gooseneck mount, use the corresponding mounting holes and provided carriage bolts / hex nuts.



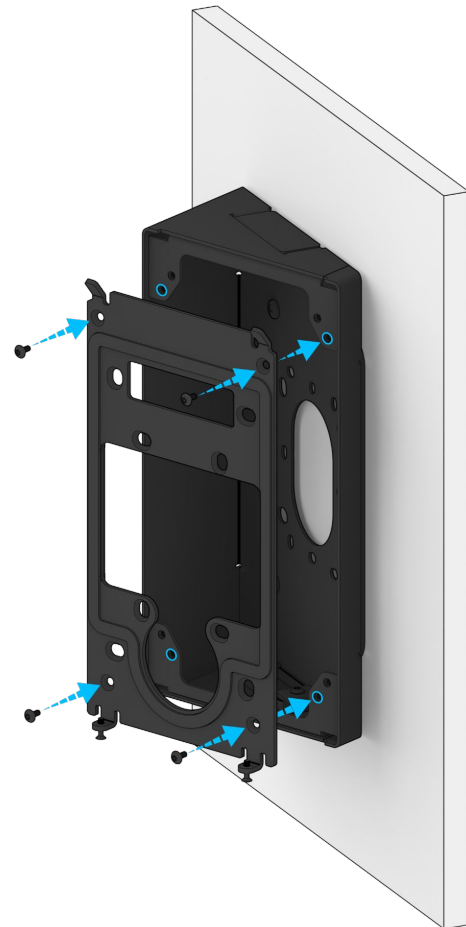
Feed Ethernet cable through the center of the Angle Mount before fully securing it to the mounting surface.

Attach the Mount Plate provided with TD53 Video Intercom to the Angle Mount using the Mount Plate Screws also provided with the TD53 Video Intercom.

Feed Ethernet cable through the center of the Mount Plate before fully securing it to the Angle Mount.

Leave enough slack to safely handle the TD53 Video Intercom during installation.

For detailed mounting instructions related to Verkada TD53 Video Intercom, see its install guide.

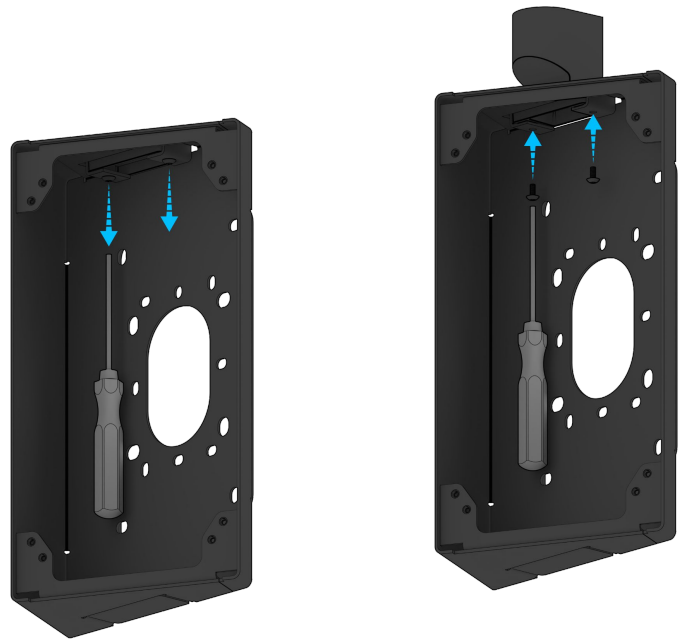


Installation

Attach Conduit Adapter (Optional)

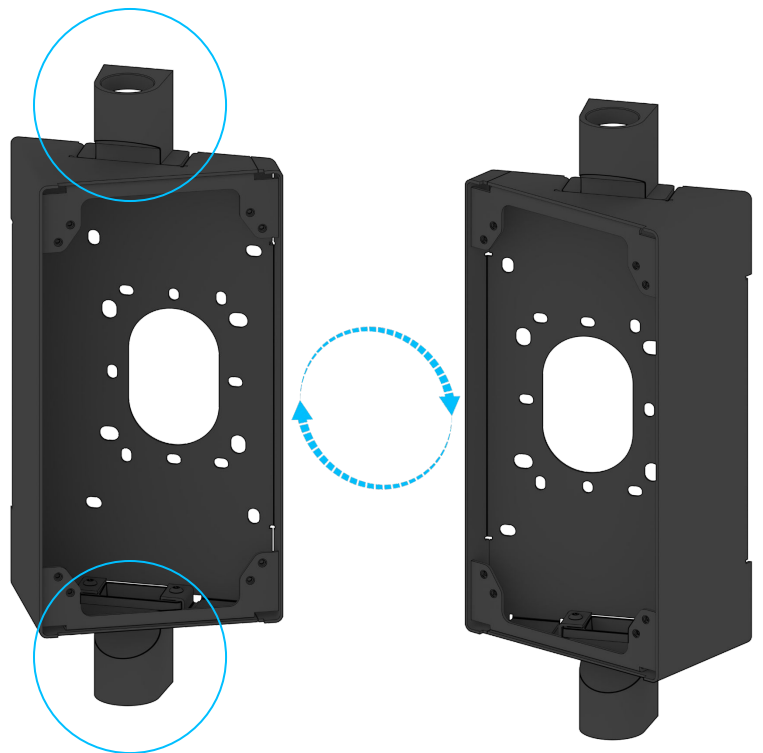
Unscrew the T10 screws attached to the conduit door, using a T10 Security Screwdriver.

Use the same screws to attach the conduit adapter in its place.



The conduit adapter can be mounted on either side of the Angle Mount.

The Angle Mount can be rotated 180° for preferred angle direction.



Appendix

Support

Thank you for purchasing this Verkada product. If for any reason you're experiencing issues or need assistance, please contact our 24/7 Technical Support Team immediately.

Sincerely,
The Verkada Team
verkada.com/support

