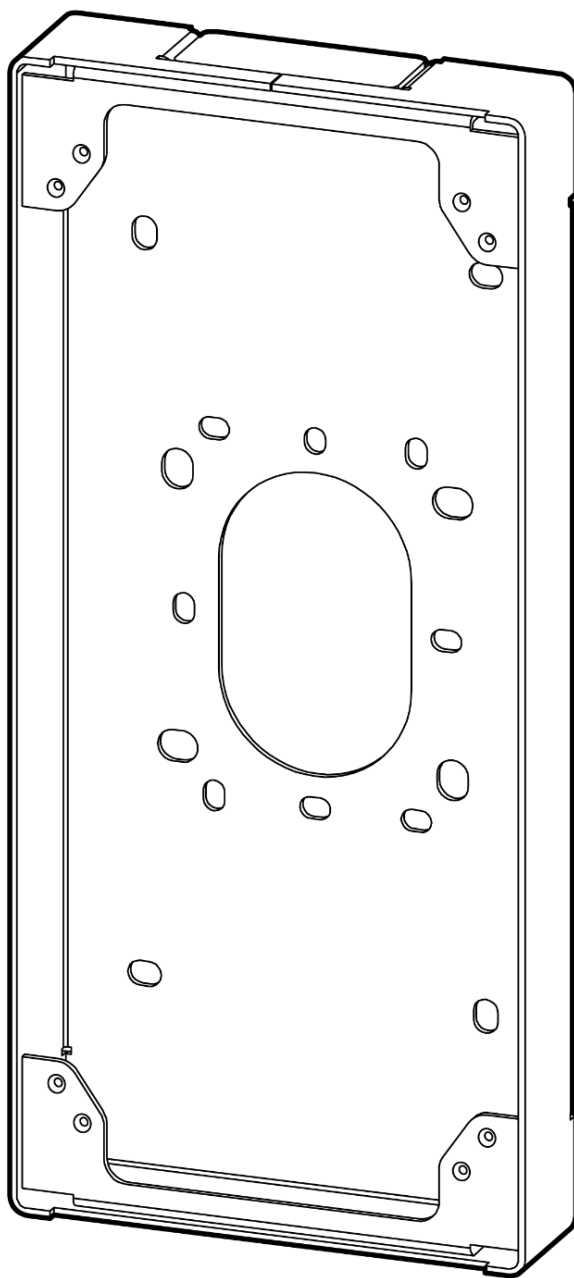


ACC-INT-COND-3

Conduit Surface Mount for TD63



Document Details

Version

V1.1 20241106

(V1.0 published 20241021)

Firmware

Firmware version can be verified on Verkada
Command command.verkada.com.

Product Models

This install guide pertains to models
ACC-INT-COND-3.

© Copyright 2024 Verkada Inc. All rights reserved.

Verkada and the Verkada logo are registered trademarks or service marks of Verkada Inc. ("Verkada"). All other trademarks are the property of their respective owners.

Verkada may make changes to this document at any time without notice. The information presented herein may be inaccurate or outdated, and Verkada is under no obligation to maintain it. ALL INFORMATION IS PROVIDED "AS-IS" AND WITHOUT ANY WARRANTIES, IMPLIED, EXPRESS, OR OTHERWISE. VERKADA DISCLAIMS LIABILITY FOR ALL DAMAGES, INCLUDING WITHOUT LIMITATION ANY DIRECT, INDIRECT, SPECIAL, INCIDENTAL, PUNITIVE, OR CONSEQUENTIAL DAMAGES, ARISING OUT OF USE OF THIS DOCUMENT.

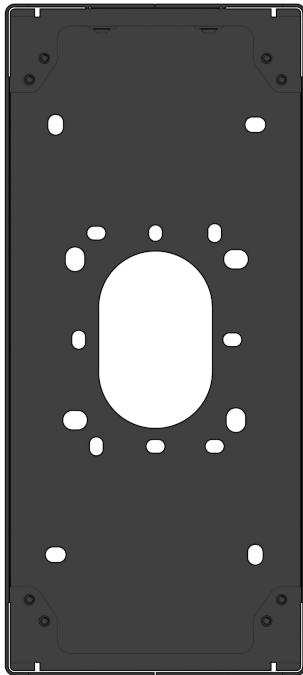
Any intellectual property rights relating to Verkada products are and shall remain Verkada's exclusive property. Use of any Verkada product is subject to Verkada's end user agreement or other executed agreement with Verkada. No license, either expressed or implied, to use or distribute any Verkada product is granted under this document.

This document may not be sold, resold, licensed or sublicensed and may not be transferred without Verkada's prior written consent. No part of this document may be reproduced in whole or in part without the express written consent of Verkada.

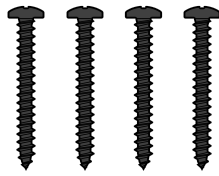


Introduction

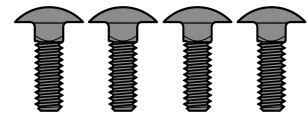
What's in the box



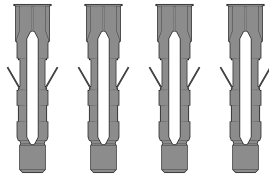
Conduit Surface Mount



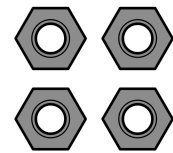
#10 Wall Screws (4 pcs)
Length: 1.5 in Drive: Phillips #2



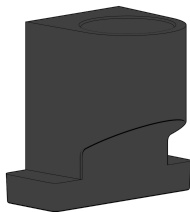
Carriage Bolts (4 pcs)
Length: 0.5"



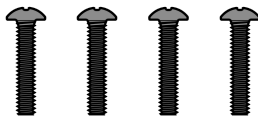
#10 Wall Anchors (4 pcs)
Drill Size: 1/4" (6mm)



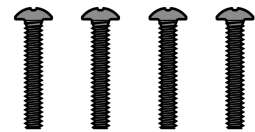
Hex Nuts (4 pcs)



Conduit Adapter
Thread: 3/4-14 NPT



#8-32 Junction Box Screws (4 pcs)
Length: 0.75" Drive: Phillips #2



#6-32 Junction Box Screws (4 pcs)
Length: 0.75 in Drive: Phillips #2

What you'll need

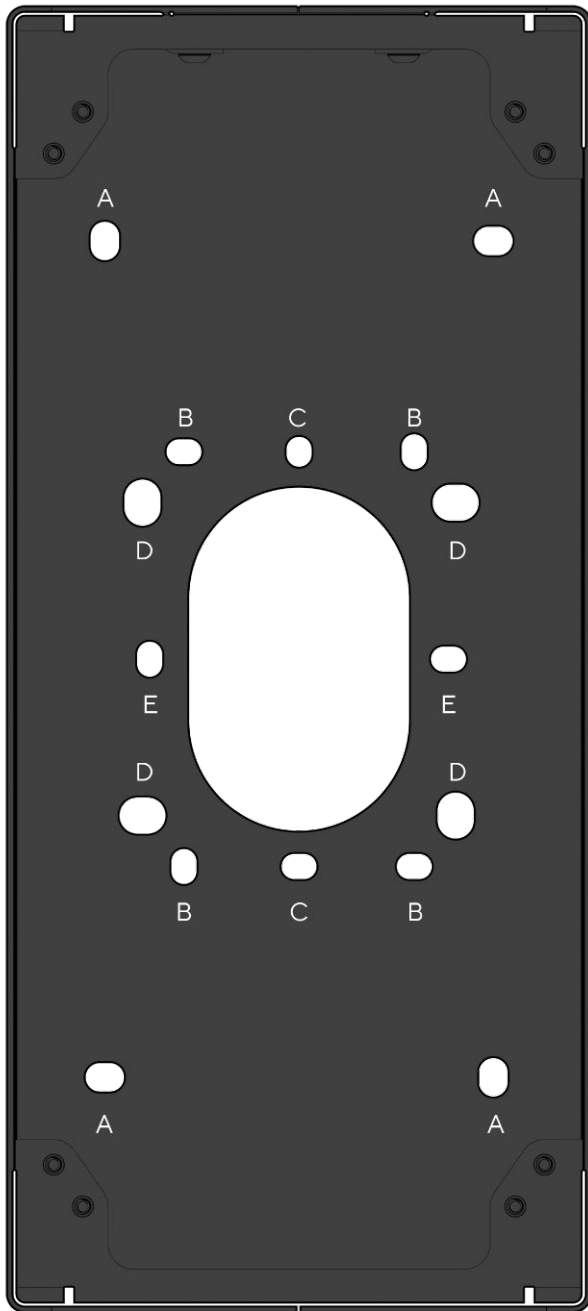
- TD63 Video Intercom
- A #2 Phillips screwdriver or power drill with a #2 Phillips driver bit
- 1/2 inch (12.7mm) drill bit, or larger, for routing cable through wall
- 1/4 inch (6mm) drill bit for wall anchor pilot holes
- 3/32 inch (2.4mm) drill bit for pilot holes

Compatible Products

- TD63 Video Intercom
- ACC-INT-HOOD-1



Overview



Hole Patterns

- A Direct wall mounting
- B Double gang junction box
- C U.S. Single gang junction box
- D Gooseneck mount
- E U.K. Single gang junction box

Installation

Mounting

For a solid material like wood or metal, drill 5/64 inch pilot holes. Drive mounting screws directly into the pilot holes using hole pattern A of the Conduit Surface Mount.

For drywall, plaster or masonry, separate wall anchors may be required.

For installation onto a junction box, use the corresponding mounting holes and provided machine screws.

For installation onto a gooseneck mount, use the corresponding mounting holes and provided carriage bolts / hex nuts.

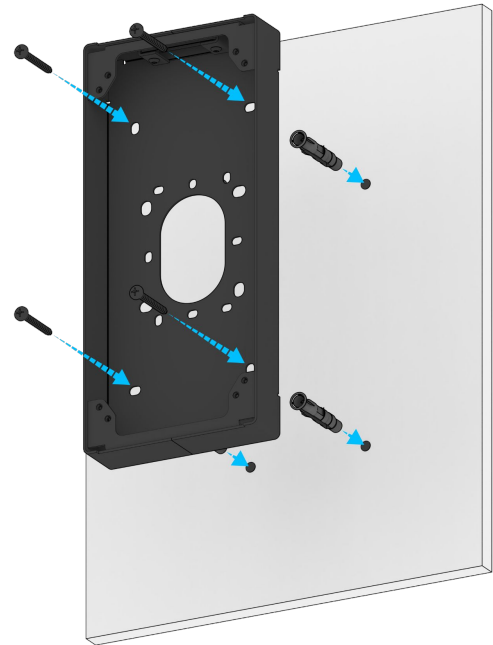
Feed Ethernet cable through the center of the Conduit Surface Mount before fully securing it to the mounting surface.

Attach the Mount Plate provided with TD63 Video Intercom to the Conduit Surface Mount using the Mount Plate Screws also provided with the TD63 Video Intercom.

Feed Ethernet cable through the center of the Mount Plate before fully securing it to the Conduit Surface Mount.

Leave enough slack to safely handle the TD63 Video Intercom during installation.

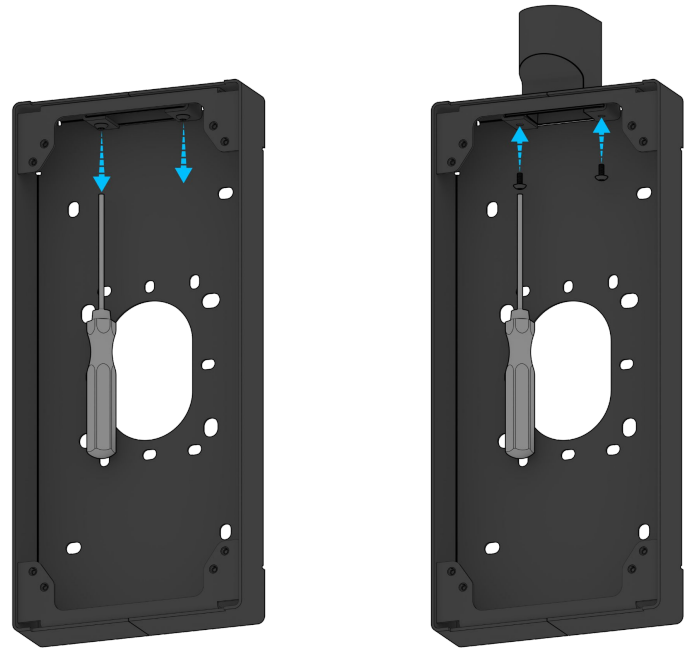
For detailed mounting instructions related to Verkada TD63 Video Intercom, see its install guide.



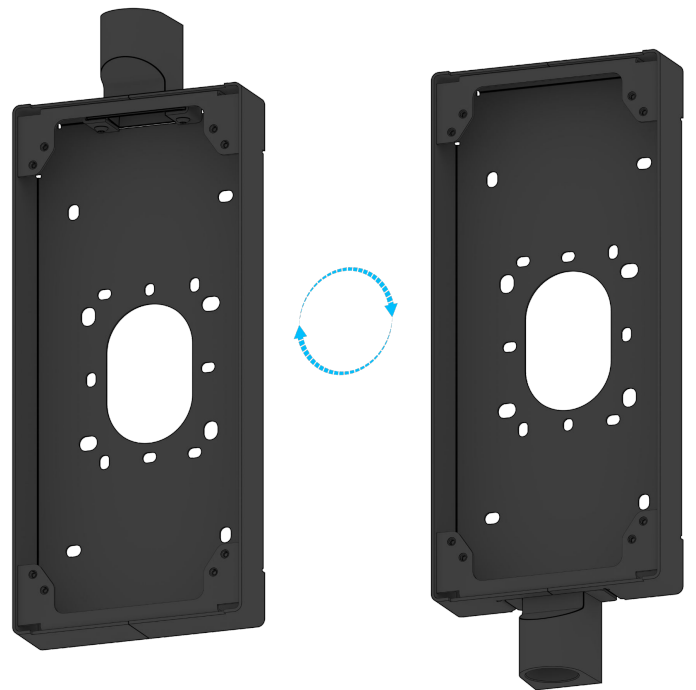
Installation

Mounting

To use the conduit adapter, use the T10 screwdriver provided with the TD63 Video Intercom to loosen the screws attached to the conduit door. Use the same screws to attach the conduit adapter in its place.



The Conduit Surface Mount is reversible and can be mounted with the conduit adapter facing upwards or downwards.



Appendix

Support

Thank you for purchasing this Verkada product. If for any reason you're experiencing issues or need assistance, please contact our 24/7 Technical Support Team immediately.

Sincerely,
The Verkada Team
verkada.com/support

