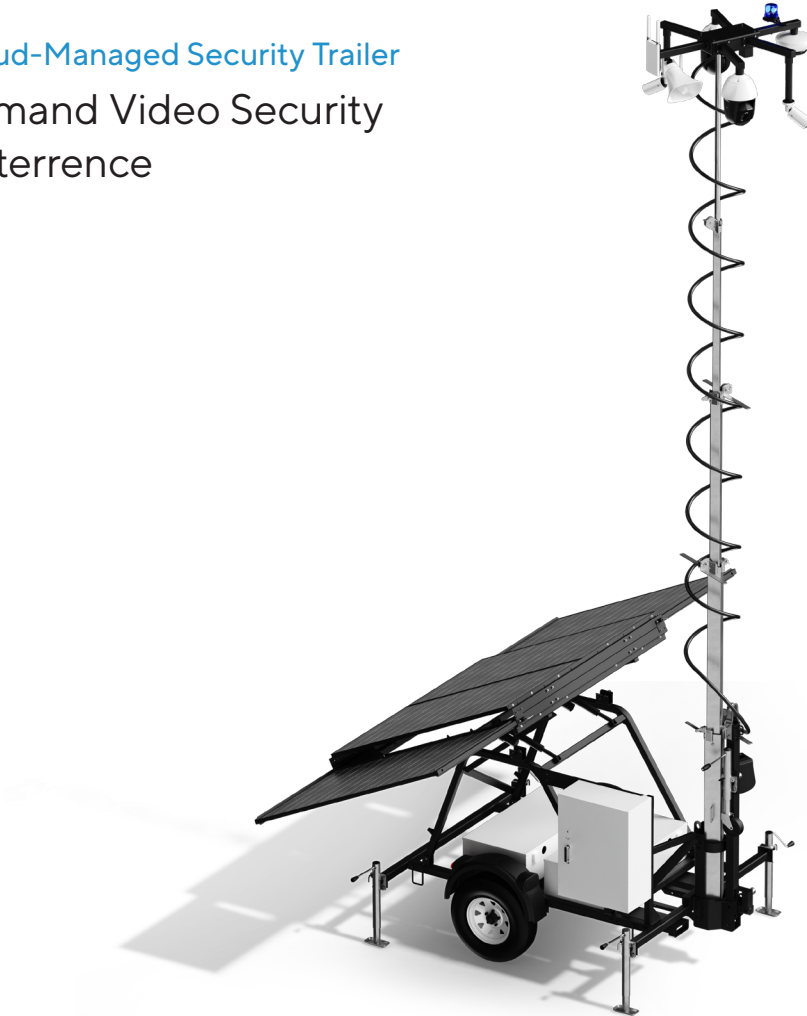


MT81 Cloud-Managed Security Trailer

On-Demand Video Security and Deterrence



Overview

The MT81 Cloud-Managed Security Trailer makes it simple to deploy Verkada security systems anywhere, including hard-to-wire or temporary locations such as parking lots, construction sites, large venues, industrial yards, and crime hot spots.

Designed for rapid deployment, every MT81 runs on solar, is cloud-connected, and supports up to six Verkada devices. The trailer comes in two variants: the MT81-6KWH and the MT81-13KWH, each with a different battery capacity to accommodate a range of power requirements. Head unit devices (such as cameras and speakers) and their licenses are sold separately.

Bringing the trailer online is easy. Simply connect a Verkada or third-party internet gateway (e.g., Starlink) to the built-in Verkada trailer controller, and you can begin monitoring the trailer and any connected devices in Verkada Command.

Key features

Rapid deployment

Pre-wired, Verkada-compatible arm mounts, and a built-in PoE switch make installation simple. Scan a QR code and the trailer is ready in Command.

Cloud-managed in Command

Remotely monitor GPS location, solar input, battery level, power load, and connected devices in Command.

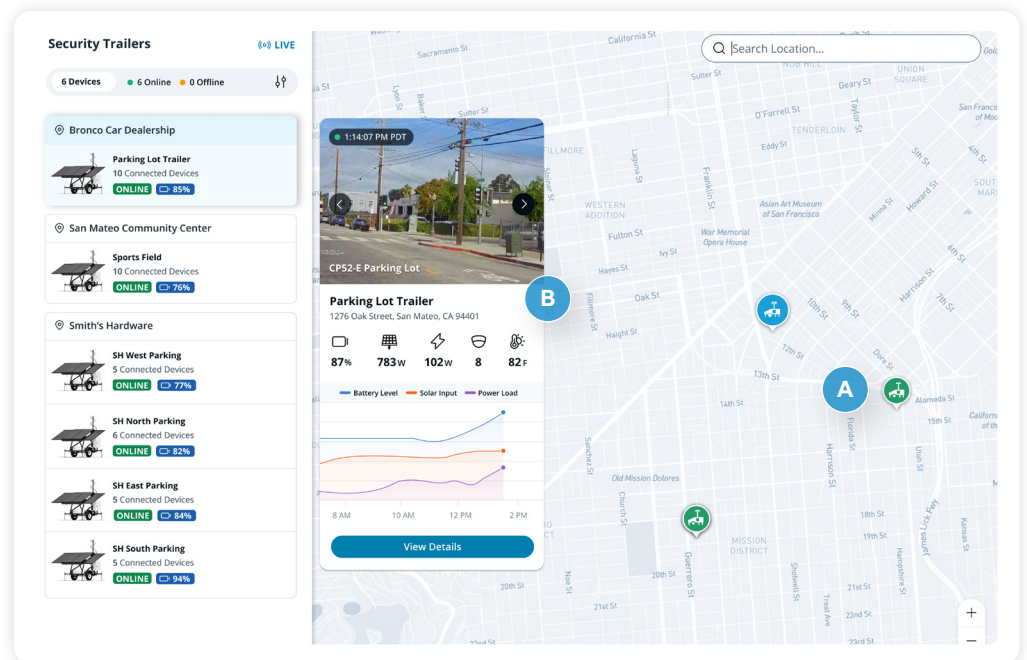
Customized to security needs

Leverage Verkada-validated configurations or choose the exact trailer and device combination that fits your security and uptime requirements.

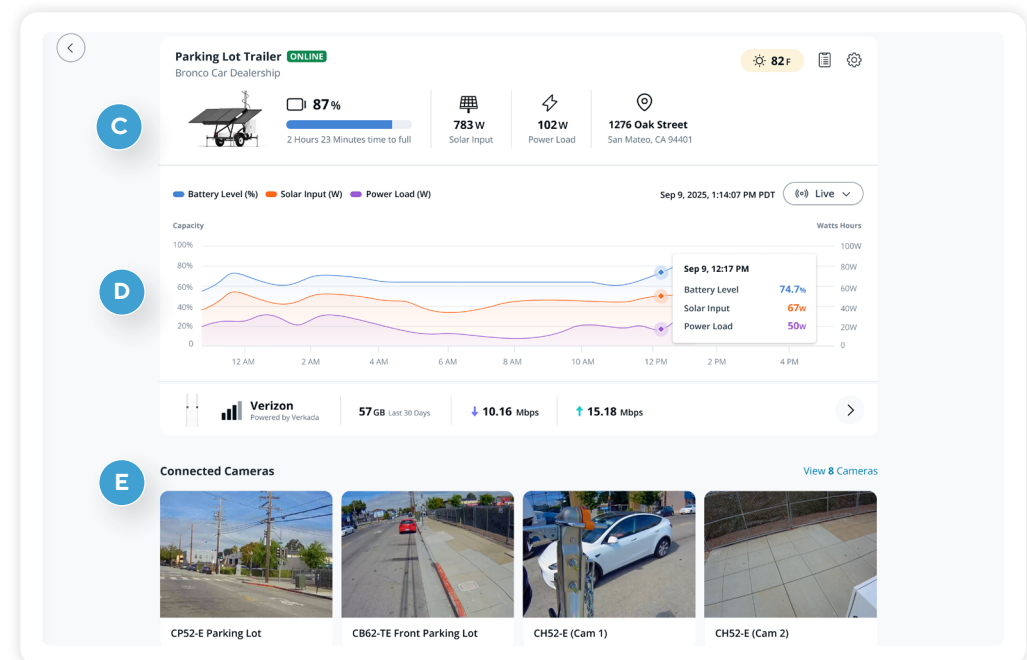


Manage at scale via the cloud

- A. View the GPS locations of all your trailers
- B. See summarized metrics for each trailer



- C. View live solar input, battery level, power load, and weather details
- D. See historical trends of various power metrics
- E. Easily manage and navigate across connected devices





MT81 Cloud-Managed Security Trailer Hardware Overview





MT81-6KWH / MT81-13KWH

Tech Specs

Power System

| | | | |
|-----------------------------|--|--------------------------|--|
| Solar Panel Capacity | 1,600W (high-efficiency photovoltaic solar modules) | Battery Housing | Single / dual battery box with bolted lid |
| Solar Array | Electric actuator-tilt | Battery Charger | NEMA 5-15 plug (15A / 125 VAC) |
| Solar Controller | Smart MPPT (Maximum Power Point Tracking) charge controller and communicator | Power Inverter | 375W |
| Batteries | 29V lithium-ion | Control Box | Aluminum with 3-point locking door (24"W x 34"H x 10"D) Ventilated with cooling fan |
| Battery Capacity | 6.6 kWh / 13.2 kWh usable total capacity | System Monitoring | Verkada Command |

Inputs and Outputs

| | | | |
|-------------------------|---|-----------------------------------|---|
| Uplink Port | 1x GigE RJ45 port 802.3bt Type 3 PoE | Ethernet Ports for Devices | 6x GigE RJ45 ports (4x 802.3bt Type 4 and 2x 802.3at Type 2) |
| Total PoE Budget | 480W | | |

Tower and Mounting

| | | | |
|---------------------|---|-----------------------------|---|
| Tower | 24' telescoping mast | Camera Arms | 6x Verkada-compatible arm mounts (1-1/2" NPT) with hole for safety screw |
| Rotation | 355° | Mounting Patterns | Mounting pattern for Verkada outdoor gateway Mounting pattern for Verkada horn speaker |
| Actuation | Electric-powered winch for raising and lowering | Cabling | 1x Cat6 cable, 6x Cat5e cables, 1x 16/2 power cable |
| Camera Mount | Multi-head camera box | Strobe Light | Blue LED flashing beacon on head unit |
| Wind Rating | Up to 65 mph at full mast with stabilizers deployed | Max Weight for Winch | 150 lb |



MT81-6KWH / MT81-13KWH

Tech Specs

Trailer and Chassis

| | | | |
|------------------------------|---|-----------------------------|---|
| Construction | Tubular steel welded construction | Tire Size | 15" diameter wheels |
| Drawbar | Tilting drawbar Standard 2" ball hitch Swivel wheel tongue jack | Stabilizers | 4x 2,000 lb stabilizer corner jacks |
| Suspension / Capacity | 3,500 lb capacity Double-eye leaf springs | Max Towing Speed | 65 mph |
| Tail Lights | LED combination tail light (turn, brake, tail) | Electrical Connector | Standard 4-wire flat connector (4-way flat) |

General

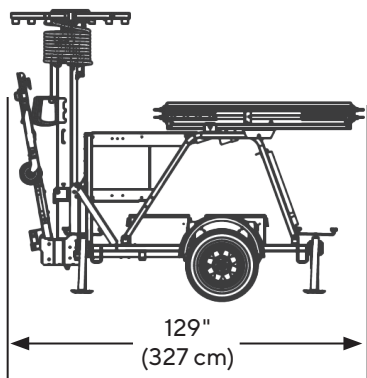
| | | | |
|------------------------------|--|------------------------------|--|
| Weight | 2,700 lb / 2,900 lb (without connected devices) | Warranty | 5 years, parts only (includes chassis, power system, and electronics) |
| Operating Temperature | -4 to 122° F (-20 to 50° C) | Safety Certifications | Federal Motor Vehicle Safety Standards (FMVSS) |
| Humidity | 0-95% RH non-condensing | Dimensions | Refer to the next page |
| Weather Rating | IP55 | Included Accessories | 2x 12" drop pipes for improved LPR performance on Verkada bullet cameras |



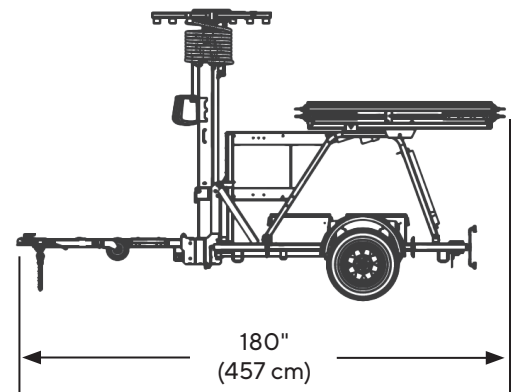
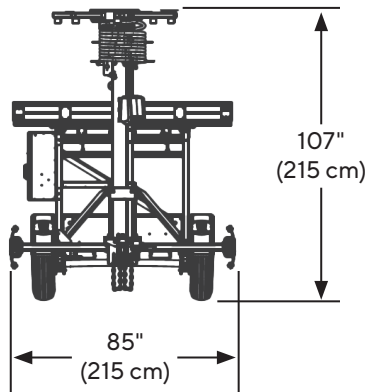
MT81 Cloud-Managed Security Trailer

Dimensions

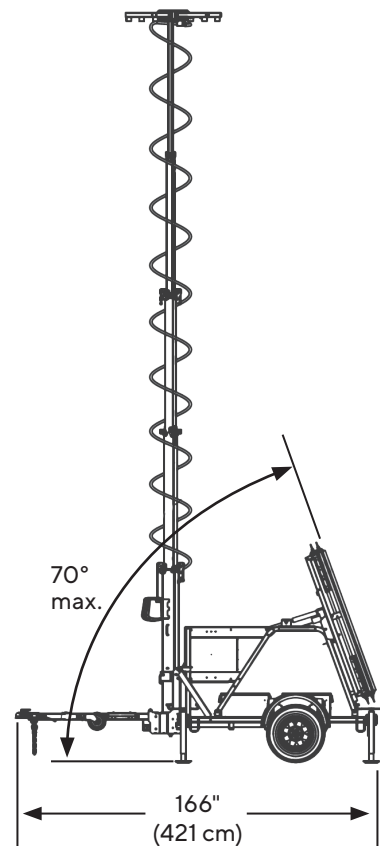
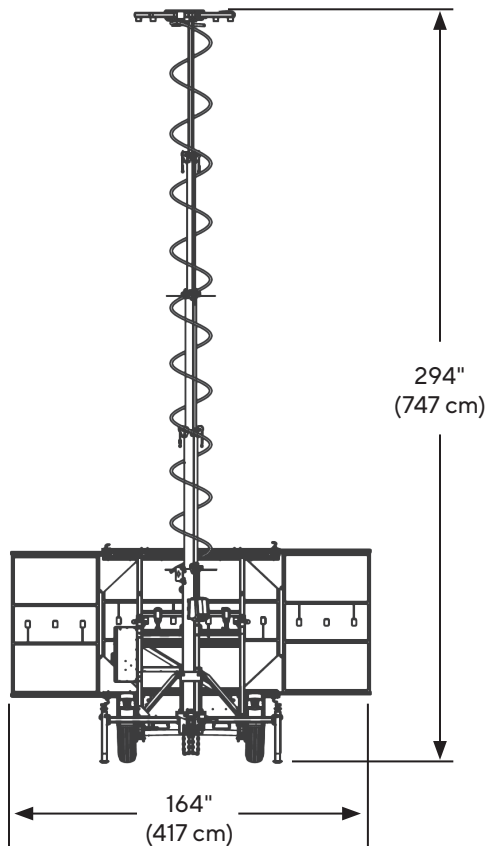
Storage



Travel



Deployed





Required Mounting Accessories

All head unit devices, their licenses, and any required mounting accessories are sold separately from the trailer.

| Device Type | Model | Required Mounting Accessory |
|-------------------------|---|---------------------------------|
| Bullet Camera | CB52-E , CB62-E , CB52-TE , CB62-TE | None |
| PTZ Camera | CP52-E , CP63-E | None |
| Two-Camera Multisensor | CY53-E , CY63-E | ACC-MNT-YPEND-1 |
| Four-Camera Multisensor | CH53-E , CH63-E | ACC-MNT-HPEND-1 |
| Fisheye Camera | CF83-E | ACC-MNT-PEND-1 |
| Dome Camera | CD43-E , CD53-E , CD63-E | ACC-MNT-PEND-1 |
| Talk-Down Horn Speaker | BZ11 | None |
| Cellular Gateway | GC31-E | None |
| Wi-Fi Gateway | GW31-E | None |



Verkada-Validated Configurations (VVCs)

Organizations can connect various devices to the MT81 to meet their specific requirements. To guide designs across different geographies and use cases, Verkada recommends the configurations below, with uptime projections based on historical weather data from major U.S. cities.

VVC 1

Designed for core security needs, such as remote monitoring, investigations, and deterrence. Recommended for construction sites, crime hot spots, and parking lots.

| Model | Description | Quantity |
|------------------------|--------------------------|----------|
| CP52-E | Outdoor PTZ Camera | 2 |
| CF83-E | Outdoor Fisheye Camera | 1 |
| BZ11 | Talk-Down Horn Speaker | 1 |
| GC31-E | Outdoor Cellular Gateway | 1 |



VVC 2

Provides zero-compromise security with maximum coverage, including license plate recognition. Recommended for stadiums, large public events, and high-value lots.

| Model | Description | Quantity |
|-------------------------|---------------------------------------|----------|
| CP52-E | Outdoor PTZ Camera | 2 |
| CB62-TE | Outdoor Bullet Camera, Telephoto Lens | 2 |
| CH53-E | Outdoor Four-Camera Multisensor | 1 |
| BZ11 | Talk-Down Horn Speaker | 1 |
| GC31-E | Outdoor Cellular Gateway | 1 |



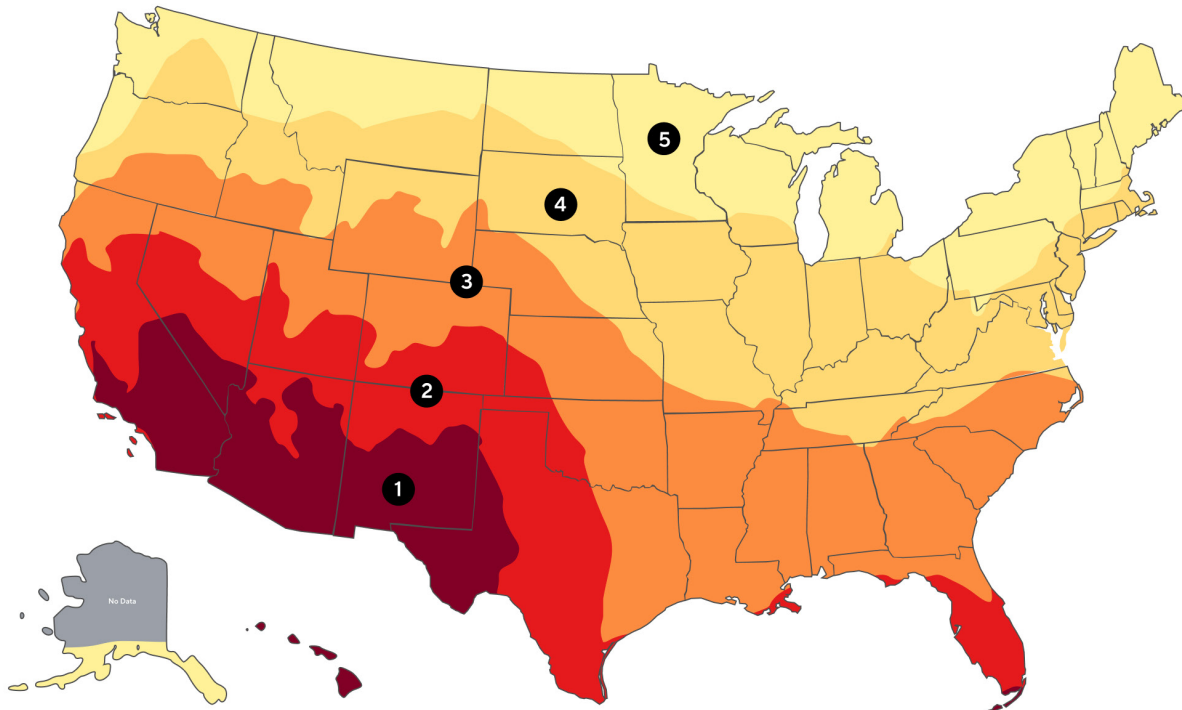


Verkada-Validated Configurations

Uptime Projections*

| Zone | Example Cities | VVC 1 | | | | VVC 2 | | | |
|------|--|----------------------------------|------------|------------------|------------|----------------------------------|------------|------------------|------------|
| | | Estimated Hours Offline per Year | | Estimated Uptime | | Estimated Hours Offline per Year | | Estimated Uptime | |
| | | MT81-6KWH | MT81-13KWH | MT81-6KWH | MT81-13KWH | MT81-6KWH | MT81-13KWH | MT81-6KWH | MT81-13KWH |
| 1 | Phoenix, AZ Las Vegas, NV Albuquerque, NM | 10 | 10 | 99.9% | 99.9% | 10 | 10 | 99.9% | 99.9% |
| 2 | Denver, CO Los Angeles, CA San Mateo, CA | 10 | 10 | 99.9% | 99.9% | 50 | 10 | 99.5% | 99.9% |
| 3 | Atlanta, GA Salt Lake City, UT Charlotte, NC | 50 | 10 | 99.5% | 99.9% | 250 | 10 | 97% | 99.9% |
| 4 | Washington, D.C. Philadelphia, PA NYC, NY | 100 | 10 | 99% | 99.9% | 500 | 100 | 95% | 99% |
| 5 | Portland, OR Cleveland, OH Seattle, WA | 250 | 100 | 97% | 99% | 1500 | 1000 | 85% | 90% |

Uptime Zone Map



*Real-world uptime can be affected by a variety of factors such as solar panel orientation and weather variation. Uptime projections are based on simulated data and assume unshaded, south-facing solar panels. Projected downtime is most likely to occur in the winter months during early morning hours. AC shore power is recommended for deployments with <99% uptime.



Ordering Information

Cloud-Managed Security Trailer

Verkada security trailers are sold exclusively in the United States through certified partners.

Note: Connected devices such as cameras, speakers, and gateways are sold separately.

| Model Number | Description | Cost (MSRP) USD |
|---------------|--|-----------------|
| MT81-6KWH-HW | MT81 Cloud-Managed Security Trailer, Includes Chassis, PoE Switch, and 1600W Solar System with 6.6 kWh Lithium-Ion Battery Pack | \$58,000 |
| MT81-13KWH-HW | MT81 Cloud-Managed Security Trailer, includes Chassis, PoE Switch, and 1600W Solar System with 13.2 kWh Lithium-Ion Battery Pack | \$65,000 |

Security Trailer Cloud License (New/Capacity Increase)

| Model Number | Description | Cost (MSRP) USD |
|----------------|---|-----------------|
| LIC-MT-1Y-CAP | 1-Year Security Trailer Cloud License, Capacity Increase | \$349 |
| LIC-MT-3Y-CAP | 3-Year Security Trailer Cloud License, Capacity Increase | \$999 |
| LIC-MT-5Y-CAP | 5-Year Security Trailer Cloud License, Capacity Increase | \$1,599 |
| LIC-MT-10Y-CAP | 10-Year Security Trailer Cloud License, Capacity Increase | \$3,199 |

Security Trailer Cloud License (Renewal)

| Model Number | Description | Cost (MSRP) USD |
|----------------|---|-----------------|
| LIC-MT-1Y-RNW | 1-Year Security Trailer Cloud License, Renewal | \$349 |
| LIC-MT-3Y-RNW | 3-Year Security Trailer Cloud License, Renewal | \$999 |
| LIC-MT-5Y-RNW | 5-Year Security Trailer Cloud License, Renewal | \$1,599 |
| LIC-MT-10Y-RNW | 10-Year Security Trailer Cloud License, Renewal | \$3,199 |

Trailers are shipped via flatbed truck. The receiver must have a loading dock or provide a forklift with a qualified operator to unload at the scheduled delivery time.