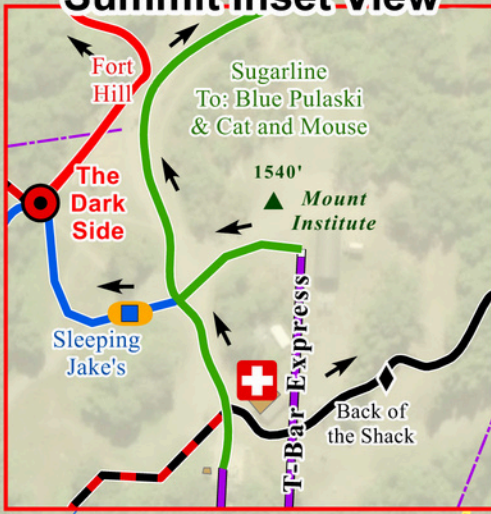


Summit Inset View



Bike Park Legend

- Downhill Only
 - Mountain Bike Trails
 - Alpine Lift in Operation
 - Major/Secondary Roads
 - Zip Lines
 - Deerfield River Trails
 - Bike Patrol
 - Tickets
 - Bike Rental
 - Direction of Travel
 - Parking
 - Trail Hub
 - Mountain Coaster
- No uphill travel or foot traffic on bike trails

Trail Rating

- Easier
- More Difficult
- Most Difficult
- Expert
- Pro Line

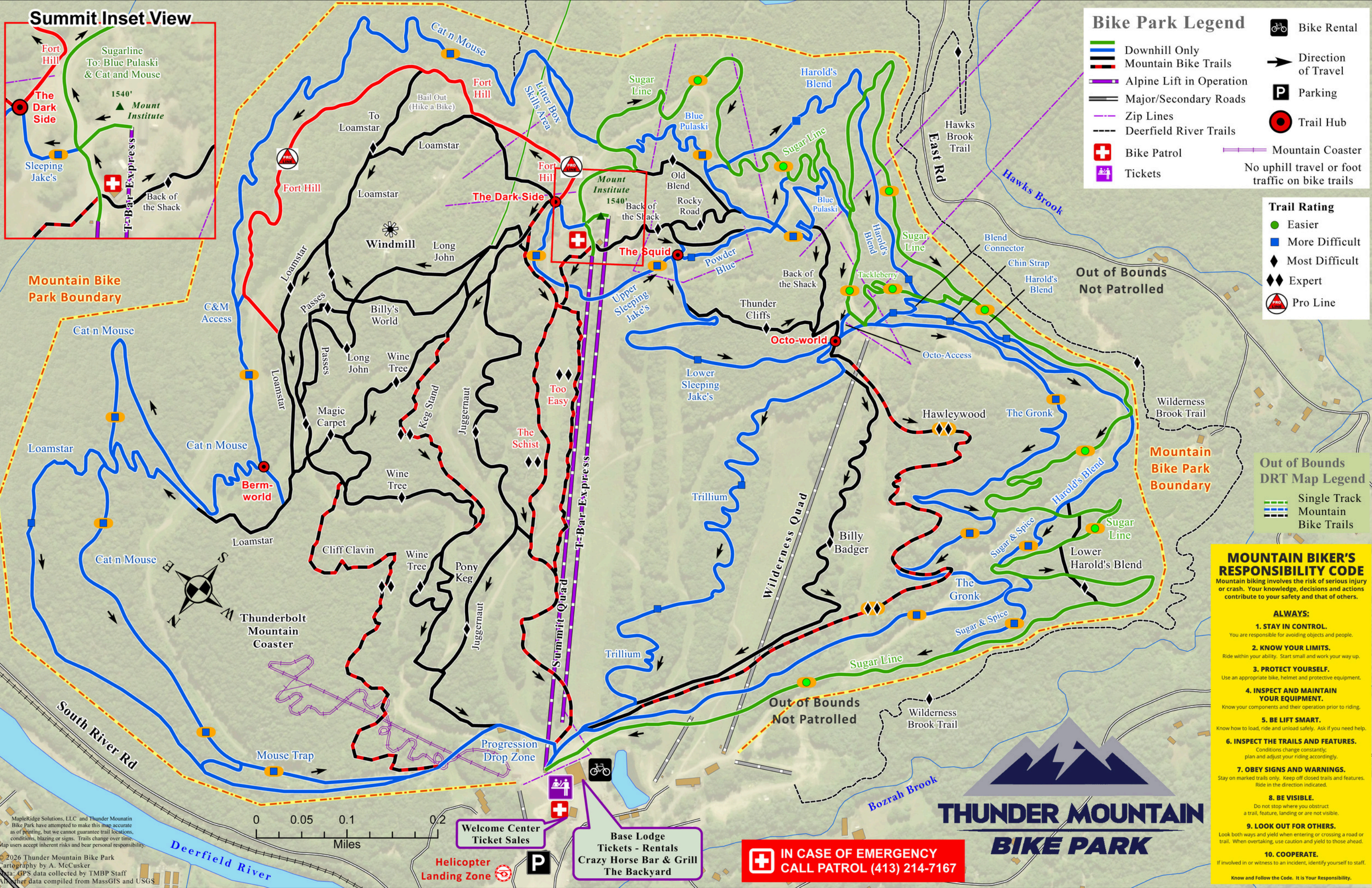
Out of Bounds DRT Map Legend

- Single Track
- Mountain Bike Trails

MOUNTAIN BIKER'S RESPONSIBILITY CODE

Mountain biking involves the risk of serious injury or crash. Your knowledge, decisions and actions contribute to your safety and that of others.

- ALWAYS:**
- 1. STAY IN CONTROL.**
You are responsible for avoiding objects and people.
 - 2. KNOW YOUR LIMITS.**
Ride within your ability. Start small and work your way up.
 - 3. PROTECT YOURSELF.**
Use an appropriate bike, helmet and protective equipment.
 - 4. INSPECT AND MAINTAIN YOUR EQUIPMENT.**
Know your components and their operation prior to riding.
 - 5. BE LIFT SMART.**
Know how to load, ride and unload safely. Ask if you need help.
 - 6. INSPECT THE TRAILS AND FEATURES.**
Conditions change constantly; plan and adjust your riding accordingly.
 - 7. OBEY SIGNS AND WARNINGS.**
Stay on marked trails only. Keep off closed trails and features. Ride in the direction indicated.
 - 8. BE VISIBLE.**
Do not stop where you obstruct a trail, feature, landing or are not visible.
 - 9. LOOK OUT FOR OTHERS.**
Look both ways and yield when entering or crossing a road or trail. When overtaking, use caution and yield to those ahead.
 - 10. COOPERATE.**
If involved in or witness to an incident, identify yourself to staff.
- Know and Follow the Code. It is Your Responsibility.



MapleRidge Solutions, LLC and Thunder Mountain Bike Park have attempted to make this map accurate as of printing, but we cannot guarantee trail locations, conditions, blazing or signs. Trails change over time. Map users accept inherent risks and bear personal responsibility.

© 2026 Thunder Mountain Bike Park
Cartography by A. McCusker
Data: GPS data collected by TMBP Staff
All other data compiled from MassGIS and USGS

IN CASE OF EMERGENCY CALL PATROL (413) 214-7167

