

 **AC6**  
**Quickstart Guide**

# AC6 Quickstart Guide

## AC6™ System Overview

Adaptive Systems™ are one of the most technologically advanced loudspeakers ever created, including the latest advances in transducer, DSP, mechanical, amplification, and software technology. Through the close integration of these disciplines, the user is free to simply define the coverage, consistency and sound pressure level (SPL) required of the system. With a minimal amount of user-provided information, the AC6 system will use Adaptive Performance to provide optimal sound reinforcement for that specific requirement.

The AC6 system workflow offers a range of entry points and allows the user to assess options for deploying the system. New users may wish to create a model of the venue and ask the AC6 system to recommend array configurations based on available inventory. Experienced users may design their own arrays as models and ask the AC6 system to adapt performance to the venue. Masterful users may simply deploy arrays and then ask the system to adapt performance.

*On-site, users can readily and quickly manipulate system performance using EAW Resolution 2 software.*

*The AC6 loudspeaker is intended for professional use. The construction, components, and hardware have been designed to provide robust, reliable performance for its intended application. Please ensure that you fully understand proper installation and operation before use. Ownership of an ADAPTive sound system assumes that only expert users will operate the system and that all workers associated with system deployment enjoy a working understanding of the critical life-safety issues associated with large-scale sound system use.*

## Internal Processing & Amplification

As is true of all professional loudspeaker systems, the performance of the AC6 depends on amplifiers delivering an adequate supply of clean power. To maximize performance, each module includes powerful, built-in, high-efficiency amplifiers that are exactly matched to their transducers. AC6 modules include 36 independent channels of amplification and DSP in order to provide independent control of each transducer. Even though extremely lightweight compared to other products in the same output category, these amplifiers are designed to meet and exceed the exceptionally high output requirements of professional applications.

## Infrared (IR) Transceivers

Each time a user powers on an AC6 array, the modules immediately use the IR transceivers on the top and bottom of the cabinet to announce themselves to their neighbors and recognize the announcements of their neighbors. AC6 recognizes each individual and the array as a whole and presents that to Resolution software. Identifying specific modules is not necessary. All that is needed is identifying where each array is located within the venue (left, right, etc.). The AC6 will determine which modules are within each array and how that array is configured.

## LEDs

There are three acoustic modules on AC6, each equipped with a bright white LED that is used for identifying AC6 arrays. It is triggered when the Identify function in Resolution software is activated. In addition, a Fault or Limiter Activation mode can be selected in Resolution and the LED will illuminate when one of these two conditions is met.

# AC6 Quickstart Guide

## Using the Loudspeaker

Users will need to perform the following general tasks to properly put the AC6 into use. This manual includes details for each task.

1. Design the system using the Resolution™ 2 Design & Control Software (see the [program Help File for further information about using Resolution](#)).
2. Design and install suspension points to support the array(s)/rigging in intended locations and aimed in the desired directions. If ground-stacked, provide a level surface capable of supporting the total weight of the array(s).
3. Connect an audio signal to the loudspeakers in the array or to a Dante™ source.
4. Connect the loudspeakers to a power source.
5. Connect a control computer with Resolution software to the AC6 network.
6. Set-up and adjust overall system gain and signal processing, as needed to maximize the array's performance for the application.
7. Provide training to operate the loudspeakers within their limits.
8. Provide regular inspection and maintenance to maintain the integrity of the installation and the performance of the loudspeakers.

## Array Design

See [Resolution Help File](#) for assistance in properly designing AC6 arrays.

## Software

EAW Resolution 2 software is designed to control ADAPTive systems. For advanced functions like in-venue optimization, supplemental software such as Rational Acoustics® Smaart™ may be desired, but this is not required for basic system operation.

Always ensure that your EAW Resolution software and AC6 firmware are up-to-date.

**For a complete list of recommended system requirements, please refer to the [Resolution 2 help file](#).**

## Using EAW Resolution™

EAW Resolution is the key to determining the optimal array configuration for any application. Rooted in EAW's proprietary FChart modeling and calculation engine, Resolution allows users to easily model any venue and visualize a wide variety of array designs to determine what particular array configuration is best suited to the venue.

Users simply need to define the array position, allowable trim, minimum clearance, and quantity of modules available and use the Array Assistant to determine the optimal array configuration for a given venue. In many situations no further prediction work will be necessary for optimal results. Users can also adjust the results after running the Array Assistant by manually adding/removing modules or adjusting coverage and observing changes in predicted results. In this way Adaptive arrays can be optimized for any application.

Additionally, Resolution interfaces directly with Adaptive Systems via the Dante protocol, allowing users to easily upload the processing parameters for their system directly from their model to the physical array, adjust equalization and coverage, and monitor all Adaptive components in real time.

# AC6 Quickstart Guide

No additional software is necessary to use Adaptive systems.

Please visit [www.eaw.com](http://www.eaw.com) to download the latest version of Resolution.

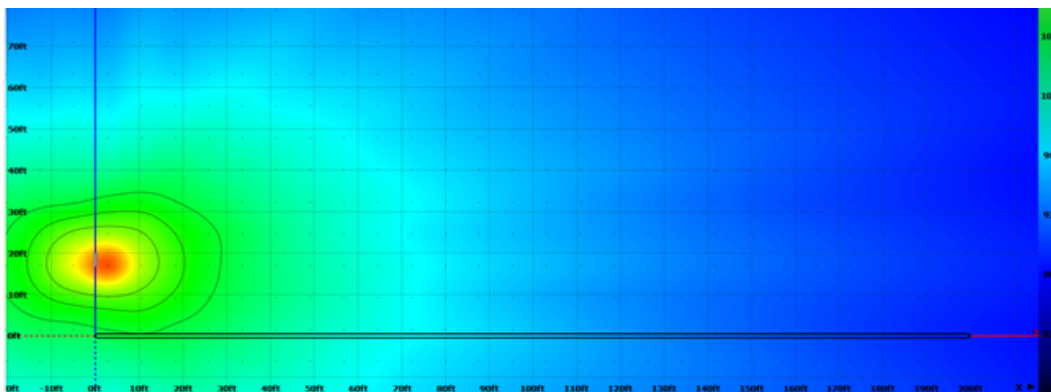
## How Array Length Affects Directivity

It would be beyond the scope of this guide to go into the physics of how line arrays behave. Regarding vertical directivity, AC6 behaves similarly to any true line source. The difference with Adaptive products is their ability to define that directivity dynamically and across the entire audible spectrum.

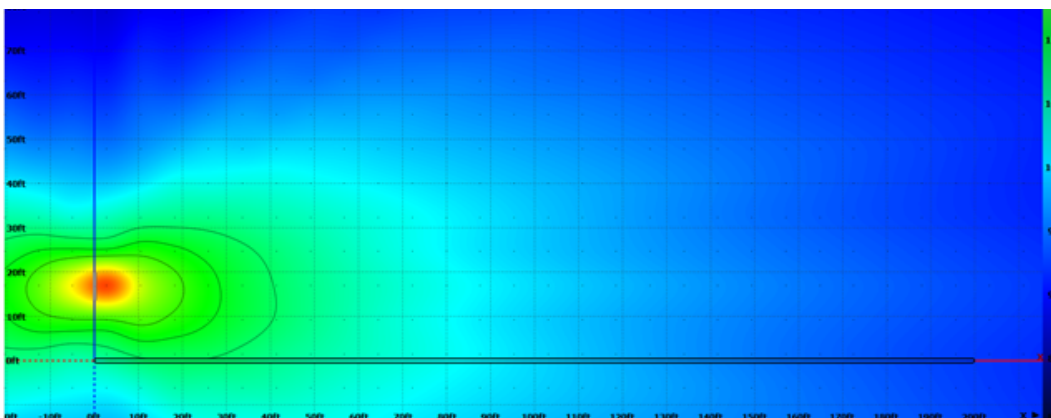
The key to directivity is array length. This should not be confused with the number of

drivers. A properly designed line array system will exhibit the same directivity from the same physical length regardless of whether this length is made up of 8", 10", 12" or 15" components. The determining factor is the length of the array itself and how that length affects the wavelength being produced.

The samples below show three array types in the same venue. The first array is very short with only 1 x AC6 modules being deployed. The contour line feature in Resolution has been used to clearly show the definition of the vertical contour at 125Hz. It is clear that with this array length, the 125Hz frequency is seeing only slight directivity control.

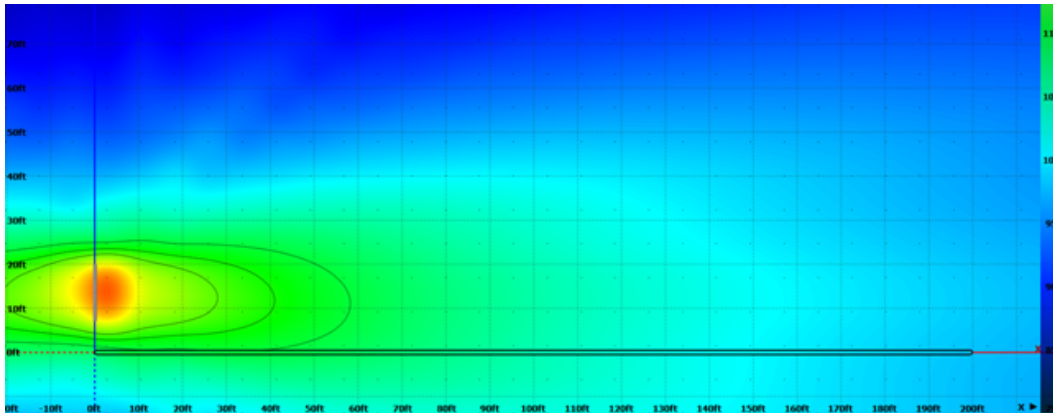


The second image demonstrates what would happen with the same frequency in the same venue but with an AC6 array of 2x modules instead of 1x. It is quite clear how much more directive the vertical has become in this image and if we continue to add modules to the array, the effect will become more pronounced.



# AC6 Quickstart Guide

Finally, we see the result when 4x AC6 is deployed. This array of AC6 produces an extremely tight vertical pattern at 125Hz across this listening area. If directivity at lower frequencies is required for the application, array length must be considered.



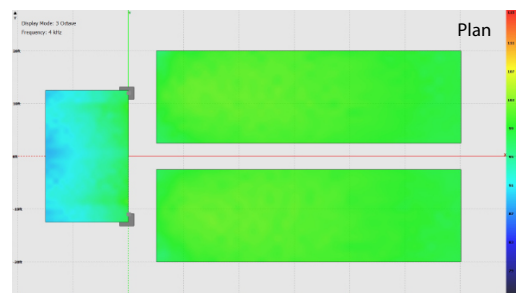
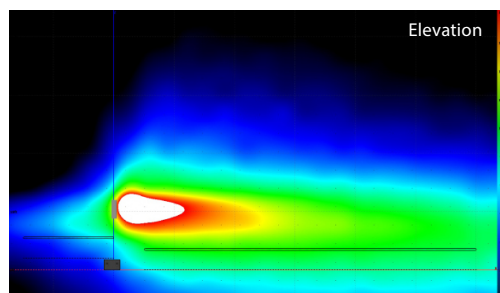
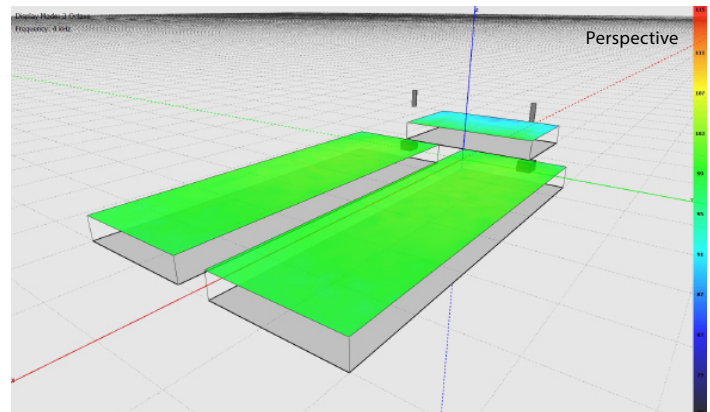
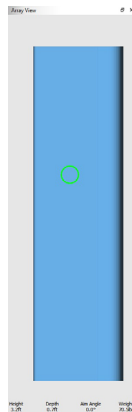
## Venue Design Examples

The following section contains a variety of venue examples with recommended systems for each. The venue type, capacity, recommended system size and expected SPL levels are summarized in the table below. These are not hard-and-fast rules, but should serve as a starting point or benchmark for similar system and facility designs.

## SIMPLE CHURCH (60' X 40' - SEATING CAPACITY 260 PEOPLE)

### Equipment List

- 2x AC6
- 2x SBX118

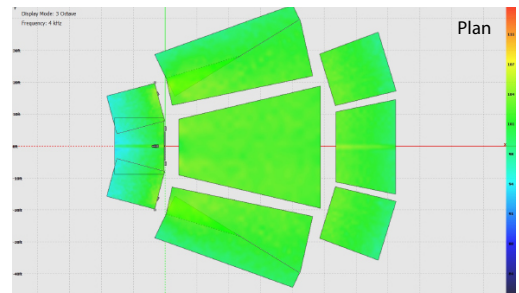
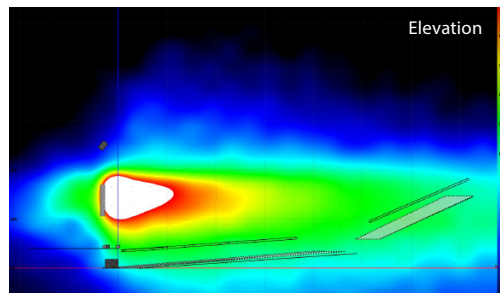
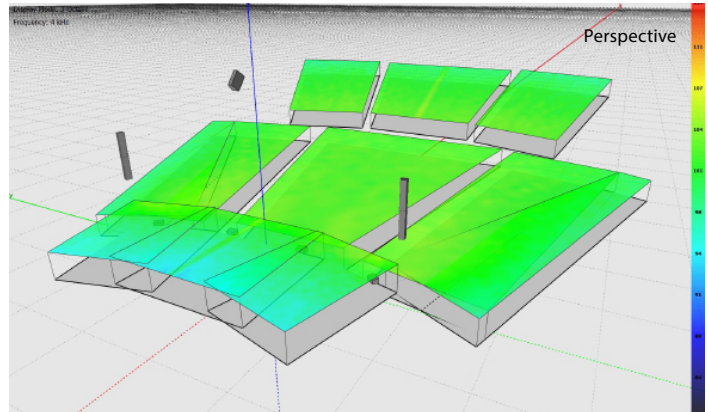
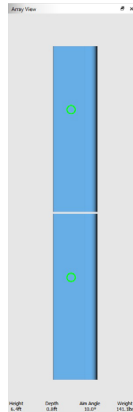


# AC6 Quickstart Guide

## AUDITORIUM (70' X 80' - SEATING CAPACITY 510)

### Equipment List

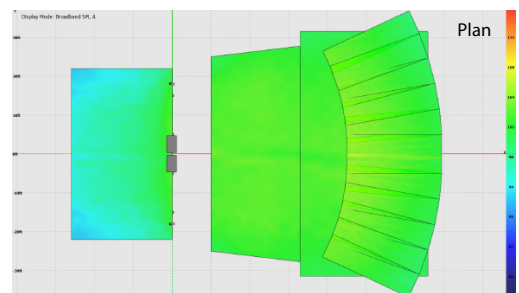
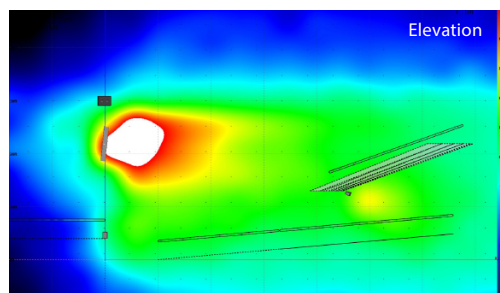
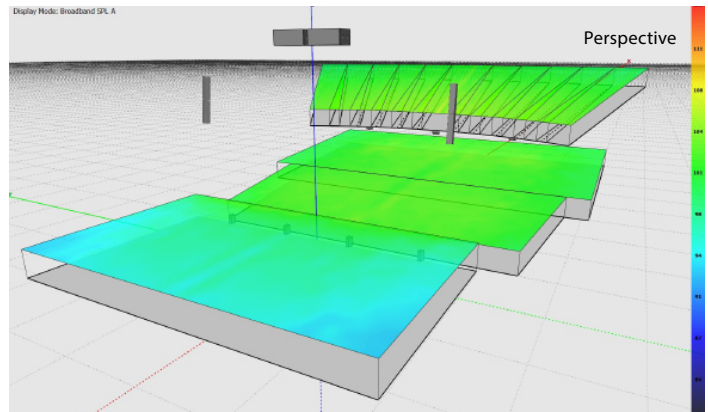
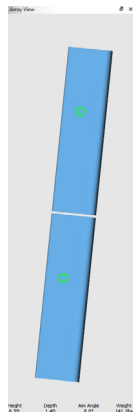
- 4x AC6
- 2x SBX218
- 1x MKD1096
- 4x JF60z
- 1x UXA4410



## THEATER (70' X 75' - SEATING CAPACITY 670 PEOPLE)

### Equipment List

- 4x AC6
- 2x SB828P
- 7x JF60z
- 2x UXA4410

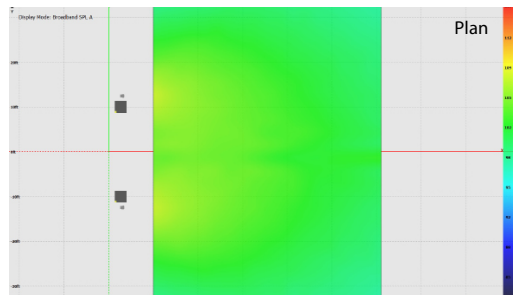
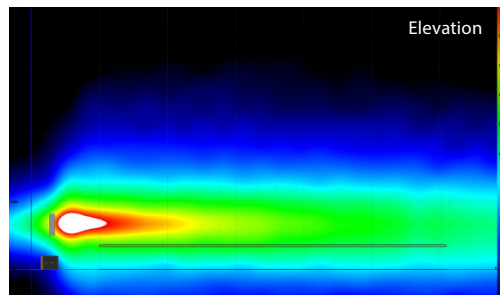
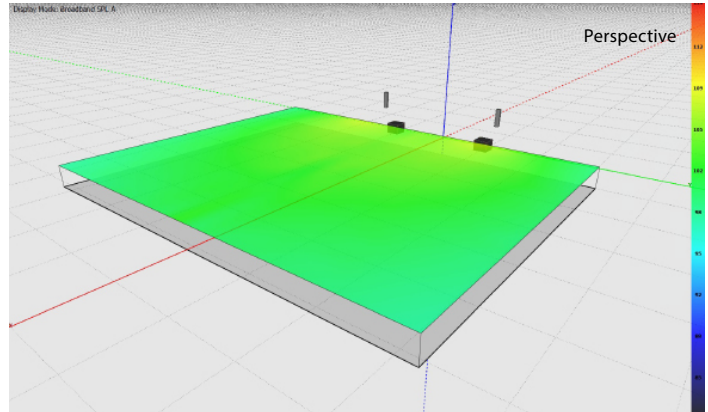
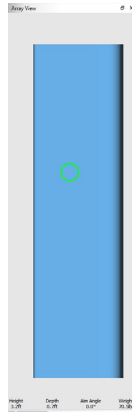


# AC6 Quickstart Guide

## GROUND STACKED (60' X 60' - SEATING CAPACITY 400 PEOPLE)

### Equipment List

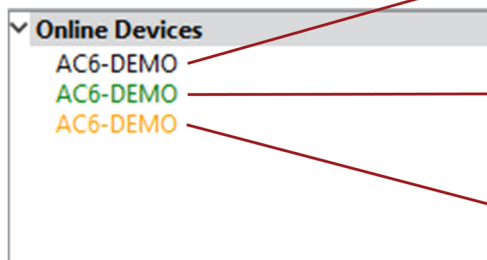
- 2x AC6
- 2x OTTO



### Going Online with AC6

Before going online, be sure the computer is connected to the same Ethernet network as the networked loudspeaker system. Communications is established by clicking Network on the Menu bar and selecting Connect. Resolution 2 will then search for any

AC6 devices on the network and displays them in the Online Devices list. This list will include your computer running Resolution 2. [Click here for a tutorial video explaining how to go online with ADAPTive Systems.](#)



Networked Module Black indicates module appears on the network but has not been assigned to any array in the model.

Networked Module Green indicates module assigned to modeled array and properly connected.

Networked Module Orange indicates module out of sync with the Resolution model

# AC6 Quickstart Guide

AC6 devices are grouped according to how they are physically arrayed, so if you have assembled an array of two AC6 in a single vertical column for example, those will be listed as:

Array #  
Column 1  
AC6-Module-#####  
AC6-Module-#####

If an array does not automatically group; right click Online Devices select Refresh Neighbor List

The names of the individual modules in that Column will be listed in the order they are physically arranged. Stand-alone modules will be listed individually.

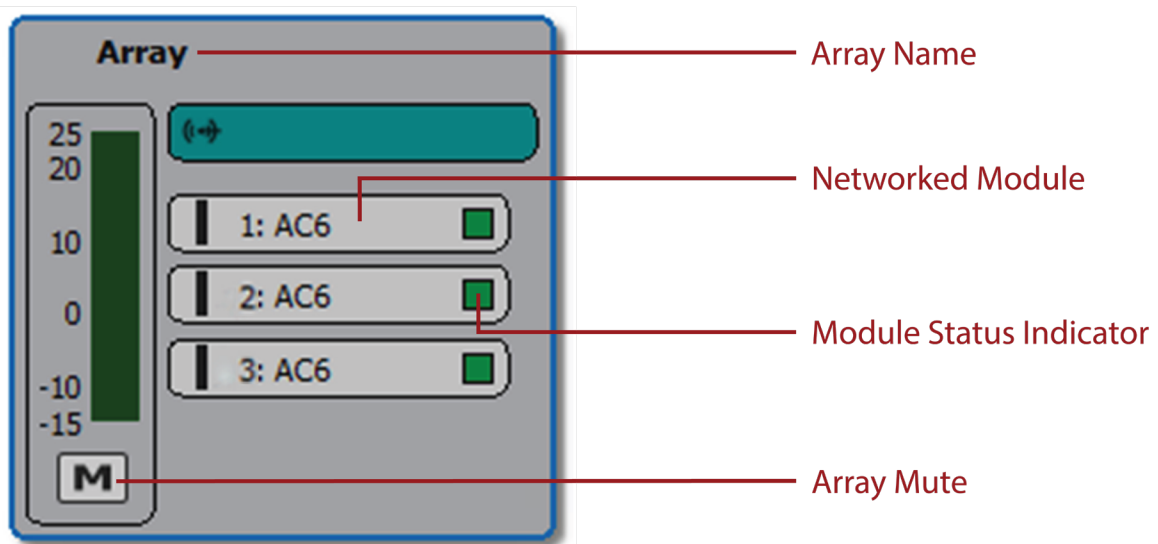
## Assigning Physical Arrays/Modules to Modeled Arrays/Modules in Resolution

*EAW's recommended best practice for AC6 systems is to create your venue in Design View and determine the optimum arrays needed*

*to provide the coverage you will need prior to assembling, flying, and connecting to the system. This will ensure you know how the Arrays will need to be configured. However, this is not required, and you can simply fly the arrays and connect Resolution 2 to your system with a blank Venue loaded if needed. [Click here for a video on how to design a system in Resolution 2.](#)*

It is best to at least enter a simple representation of the area you intend the System to cover. Adding arrays in the appropriate positions prior to going online will speed connection time allowing you to upload settings as soon as you associate a modeled Array with its physical Array.

If arrays are not defined in the Venue, then simply click on each Array in the Online Devices list and drag them over to the Network Configuration desktop. This will open the Array Assistant dialog. After the settings are entered click finish. Resolution 2 will create an icon with the name of the Array, the list of arrayed modules in each Column in the Array, an Array Mute button, Input Level and Gain Reduction meters.



# AC6 Quickstart Guide

It is possible to edit the X,Y,Z physical location, Min Trim, Max Hang and Aim Angle in the Properties pane while that Array is selected.

If a venue and arrays have been created in Resolution, then representations of the Arrays and Modules in the model will be displayed in the Network Configuration View as grey boxes. Each module in the array will have a small indicator square that reports each module's status.

- A question mark indicates that no physical module has been associated with the module in the model.
- A Yellow box indicates a module that has gone offline.
- A Red box indicates a module previously assigned that was not found upon reconnecting to the Network.
- A box that occasionally flashes Green indicates the module is successfully communicating with Resolution.

Unassigned modeled Arrays will have the list of modules or loudspeakers included in the Array while non-arrayed loudspeakers will be shown as individual boxes with only one device listed. Arrays will be shown with the modules in Columns and the meters.

A physical AC6 Array in the Online Devices list can be assigned or associated with a modeled Array in the model by simply clicking on the Array in the list and dragging it on to the appropriate modeled Array.

*Note: the physical Array and modeled Array must include the same quantity and arrangement of modules).*

Assign all physical Arrays to modeled Arrays until all Arrays have been assigned.

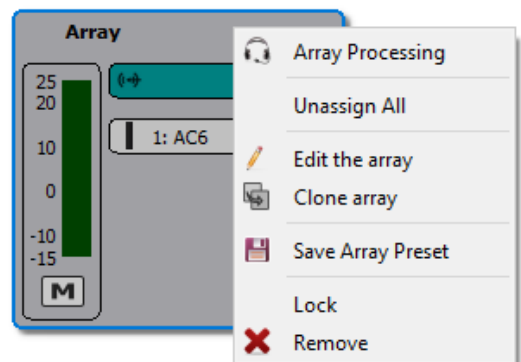
## Managing AC6 in Resolution

Once a physical Array has been associated with a modeled Array, the individual modules listed in the Array will be graphically arranged in Columns and a small square "indicator light" for each module. These indicators will periodically flash green to confirm that Resolution 2 has established active communications with each Anya module.

Clicking an Array in the Network Configuration Desktop will display its properties in the Properties View window (if the Properties View window is opened) and can be edited as explained in the Properties View chapter.

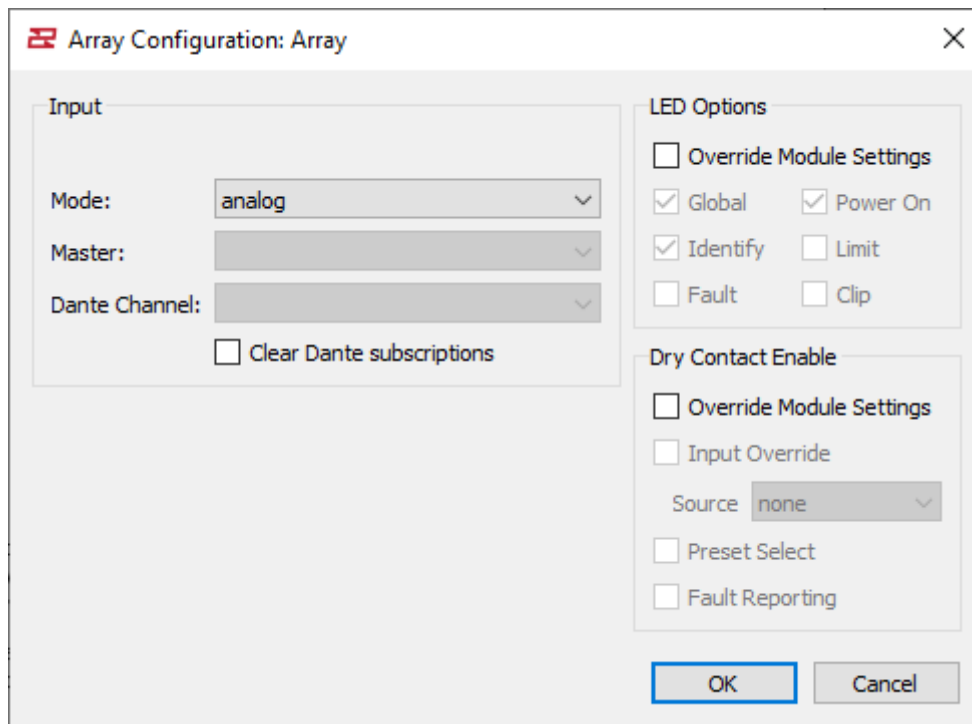
Array Processing can be displayed and edited in real-time by double-clicking the EQ graph at the top of the Properties View window.

Right clicking an Array will open a menu with options to open Array Processing, Unassign All, Edit the array (which will launch the Array Assistant), Clone the array, Save Array Preset, Lock array movement, or Remove array. These mirror functions available in the Project Explorer and Properties panes.

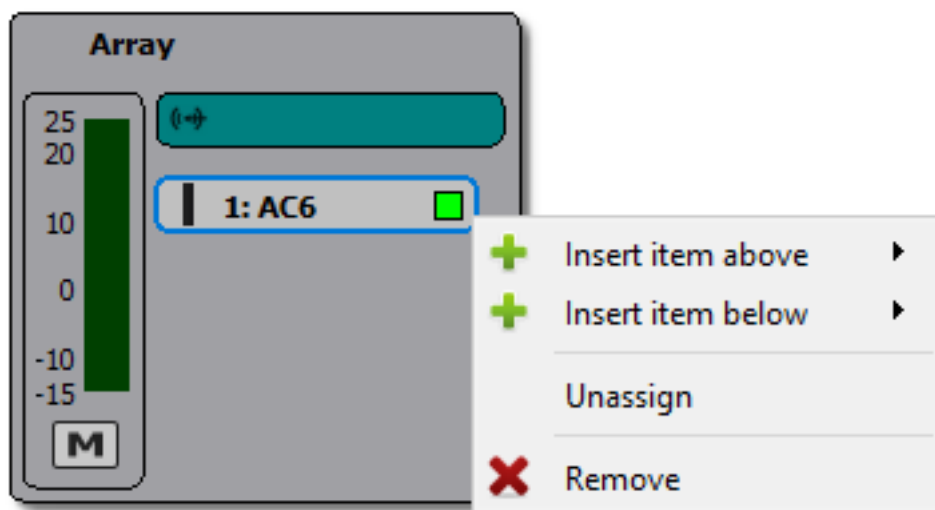


# AC6 Quickstart Guide

Double clicking the teal input assignment button will open the Array Configuration dialog.

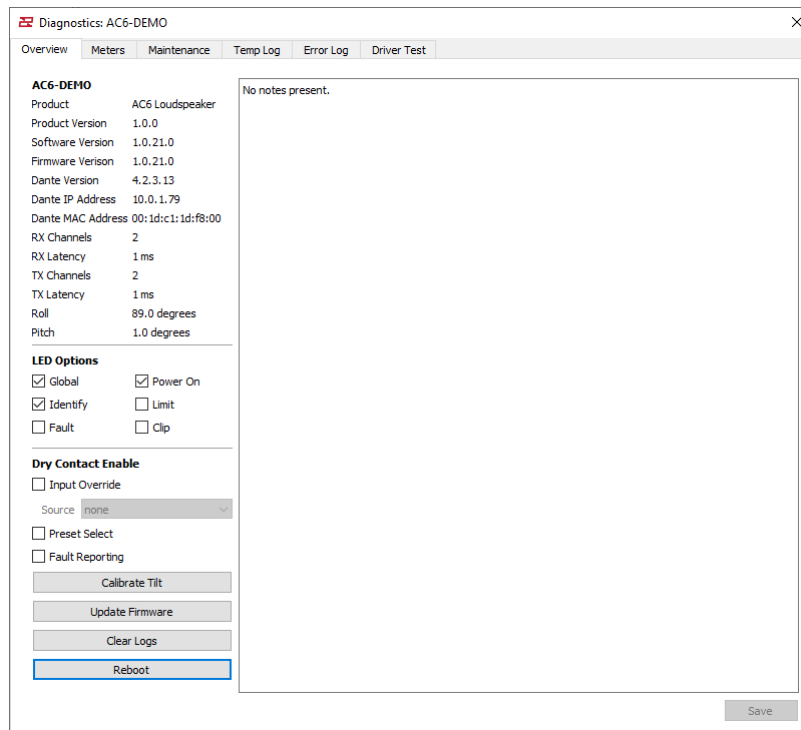


Right clicking a module in an Array will open a menu with options to Insert Item Above, Insert Item Below, Unassign, or Remove Array Item.



# AC6 Quickstart Guide

Double clicking a module will open the Diagnostics Window for that module

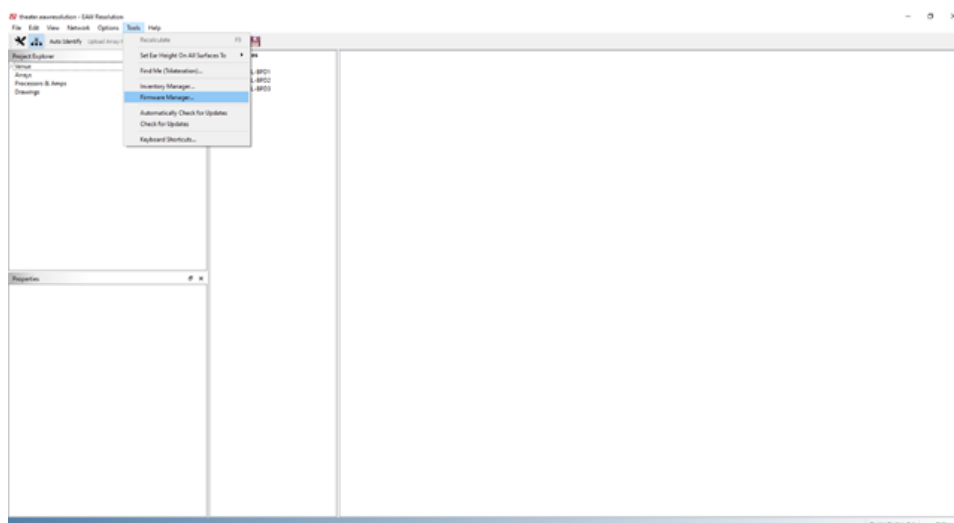


## Updating Firmware on AC6

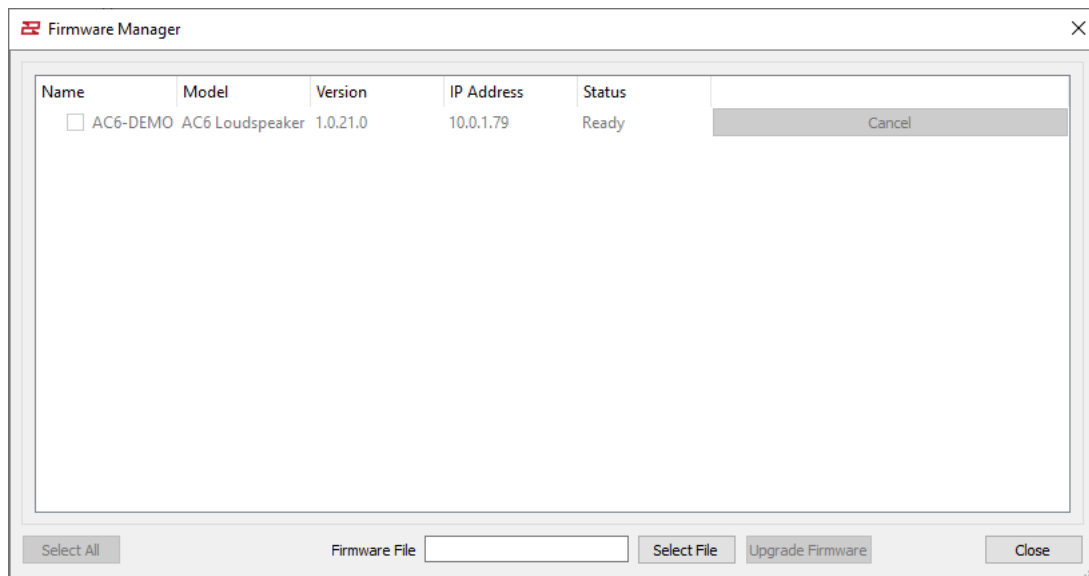
*NOTE: Before starting Firmware update, please turn the Windows Firewall off.*

*NOTE: It is highly recommended you run the firmware update with a DHCP server connected to the network.*

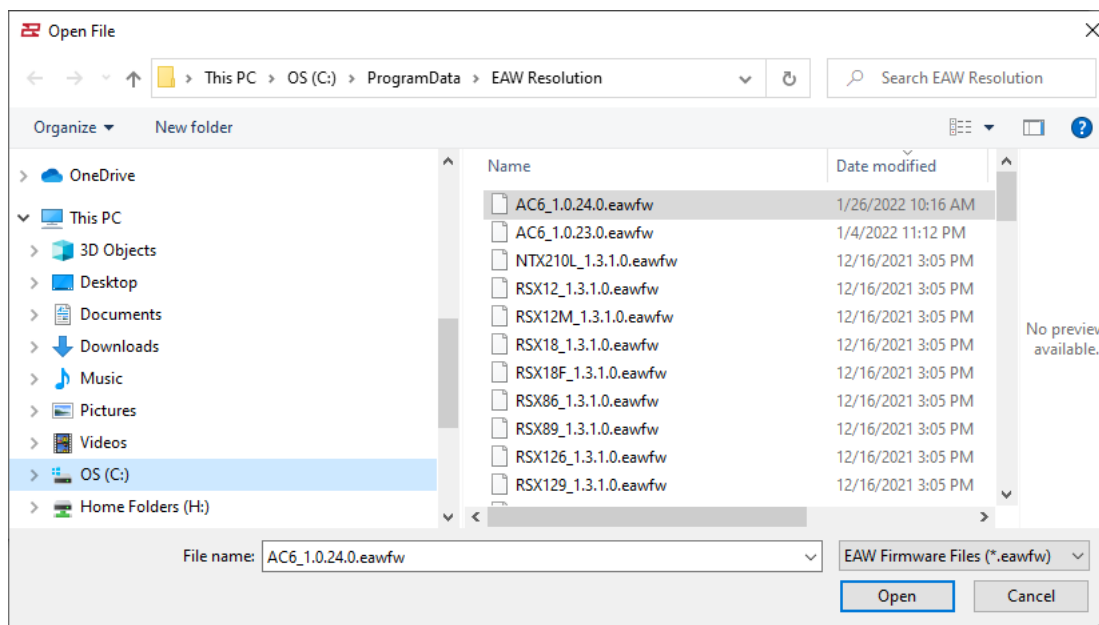
Select Tools>Firmware Manager:



# AC6 Quickstart Guide

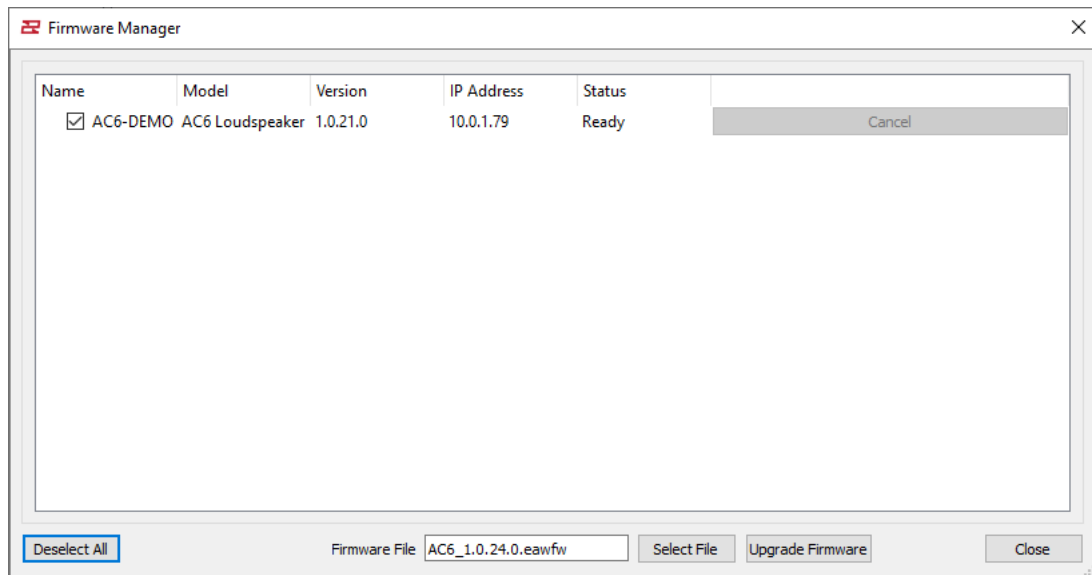


Select the firmware file (.eawfw) in C:\ProgramData\EAW Resolution (Windows must be set to show hidden files and folders):



# AC6 Quickstart Guide

Select the AC6 modules you wish to upgrade (or select all):



Select Upgrade Firmware.

The upgrade is complete when the status indicates 'Finished'. The status will return to 'Ready' about 30 seconds after it has finished.

# AC6 Quickstart Guide

## Mounting & Rigging AC6

### IMPORTANT SAFETY INSTRUCTIONS – READ THIS FIRST

#### Safety Instructions

Read and heed all warnings and safety instructions in this manual before using this product. Failure to follow these precautions may result in damage, injury, or death.

- 1) Read these instructions.
- 2) Keep these instructions.
- 3) Heed all warnings.
- 4) Follow all instructions.
- 5) Clean only with a dry cloth.
- 6) Install loudspeaker in accordance with the manufacturer's instructions.

7) Do not install near any heat sources such as radiators, heat registers, stoves, or other apparatus that produce heat.

8) Only use attachments/accessories specified by the manufacturer.

9) Refer all servicing to qualified service personnel. Servicing is required when the apparatus has been damaged in any way, does not operate normally, or has been dropped.

10) Use personal protective equipment not limited to gloves, safety goggles, ear protection, and lifting supports.

### Suspension Warnings

**WARNING:** Suspending anything, especially overhead of people, should be done with extreme caution. Always engage the services of a certified professional who is qualified to determine the requirements for and to implement overhead rigging. Only persons with the knowledge of proper hardware and safe rigging techniques should attempt to suspend loudspeakers overhead. Failure to follow these precautions may result in damage, injury, or death.

# AC6 Quickstart Guide

## Wall Bracket Instructions

Tools needed: 10mm wrench or hex driver, 4mm allen

### 1. Inventory

Before beginning installation, inventory your available hardware to items listed.

Item	Description	Quantity
A	AC6 Wall Bracket	1
B	AC6 Cabinet Bracket Assembly	1
C	Cosmetic Cover	1
D	M6 x 20 screws	2

### 2. AC6 wall bracket limits of use

a. The AC6 Wall bracket is designed to suspend each corresponding AC6 Series loudspeaker with a design factor of 10:1 to meet or exceed most global suspension regulations. Below are the maximum working load limits at 10:1, 7:1 and 5:1 Design Factors.

Design Factor	Maximum Working Load Limit		
	10:1	7:1	5:1
AC6 wall bracket	75lbs (333N)	107lbs (476N)	150lbs (667N)

*These values have been confirmed with Finite Element Analysis*

b. The weight/mass is listed as the following: AC6 Wall Bracket (10.3lbs, 4.7kg)

c. The AC6 Wall Mount bracket is designed to suspend only one loudspeaker per bracket.

d. Any geometric or structural modifications to the AC6 Wall Bracket or hardware are not EAW-approved will void the warranty and may result in damage, injury, or death.

e. **WARNING: Take care when lifting AC6 products to avoid harm or damage to product.**

f. **WARNING: AC6 Wall Brackets are for suspension of loudspeakers only. Suspension of persons is prohibited.**

# AC6 Quickstart Guide

## 3. Installation of AC6 wall bracket to mounting surface

a. The wall bracket must be mounted to secure structure sufficient to support the products weight. If you are unsure, please consult a qualified professional. **A minimum of two attachment points must be used, each point capable of supporting 350lb (160kg) If four points are to be used, each point can be rated at 175lb (80kg)**

b. Mark the wall or structure where brackets will be mounted. Refer to the included customer drawing (2071359-CD) for mounting pattern. Use the points that provide the highest amount of vertical spacing.

c. If multiple columns are being mounted, spacing should be 39.0" (990.6mm) from centerline to centerline. This can be measured from bracket top to bracket top.

d. Product is designed for vertical mounting only. Use of level is encouraged to ensure bracket is vertical, and adjacent brackets align correctly when multiple speakers are mounted.

e. Ensure the bracket is in the correct orientation. The tabs will face the intended pan direction. Use of a level is encouraged to ensure bracket is vertical.

f. Secure the bracket to the wall with minimum of two hardware points. Each point must be capable of supporting 350 lbs. If four points are to be used, each point can be rated at 175 lbs.

*Note: For mounting to wooden studs, the below points must be used. Install 1/4" x 3"lg 18-8 SS lag screw or M6 x 80mm lg 18-8 SS lag screw with flat washers. Mounting to metal studs is not recommend.*

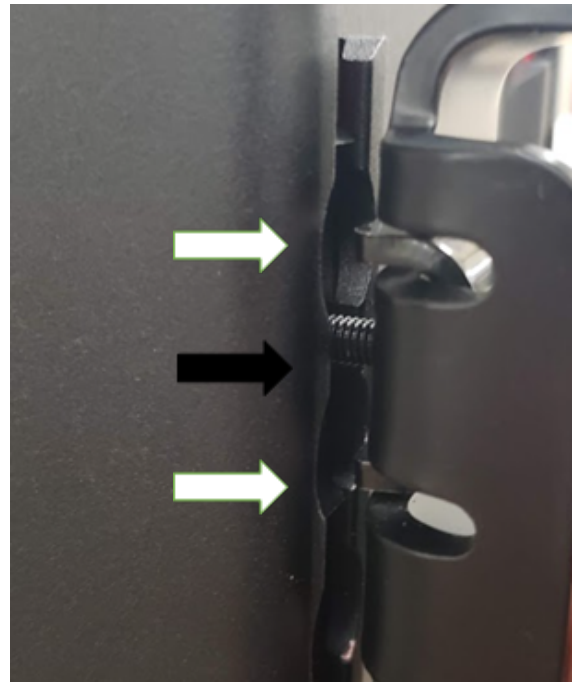


Detail: Two-point wooden stud installation

# AC6 Quickstart Guide

## 4. Installation of cabinet bracket to the AC6 unit

- a. Using the desired cabinet orientation (input on bottom, or top), and desired pan direction (left or right) identify which side of the cabinet to mount the bracket.
- b. The bracket must be mounted on the side in which the pan is required. The bracket will not pan the opposite direction. For symmetrical L/R setups, the bracket will mount in mirror fashion.
- c. Locate the flytrack studs attached to the bracket inside the flytrack on the back of the cabinet. The two locating brackets on the outside of the bracket should sit inside the flytrack ridges.



Detail: Flytrack studs and locating brackets

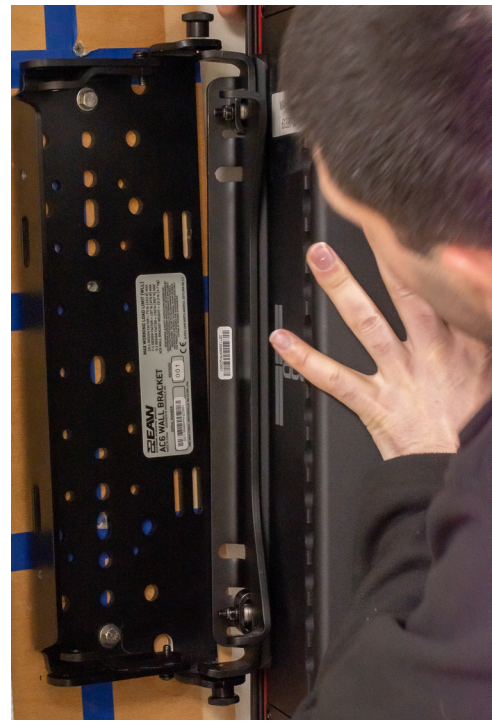


- d. Using 10mm wrench or hex driver, tighten the lock nuts on the flytrack studs to secure the bracket to the cabinet. Do not overtighten. (see image to left)
- e. The pan locking arm can be moved to the opposite side of the bracket if needed for improved tool access.

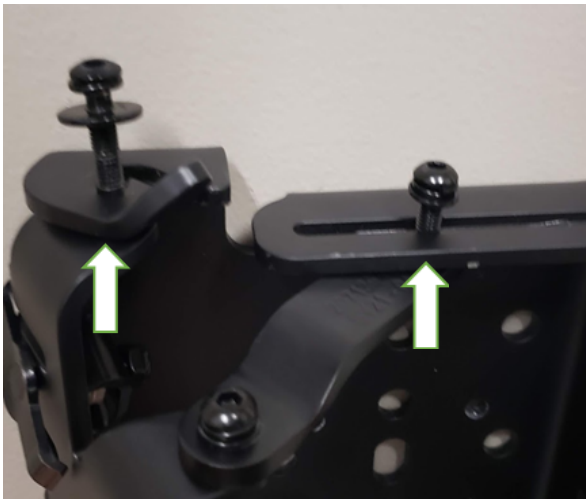
# AC6 Quickstart Guide

## 5. Installation of AC6 to wall bracket

- a. Before mounting the AC6, wires should be run to the intended locations. Consider the orientation of mounting, power will either come from the top down, or the bottom up.
- b. Network, analog audio, and dry contacts can be looped from either end. Refer to user manual for more information.
- c. Starting from the bottom of the array and moving to the top, mount each AC6 to the respective wall bracket.
- d. The button head screws (M6x35) on the cabinet bracket are loose, it will be tightened once the cabinet is mounted to the wall bracket. Have a 4mm allen driver available to tighten immediately. **The cabinet should not be left unattended if this hardware has not been tightened.**



Attaching AC6 to wall bracket



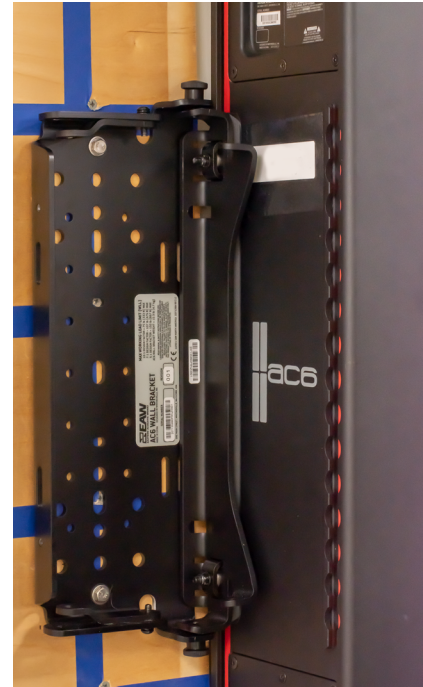
Detail: button head hardware positioning

- e. Lift the cabinet up to the mounting bracket and slide the M6x20 button head screw shafts into the notches in the wall bracket. Slide the cabinet back so the hardware sits fully into the notches.
- f. Using 4mm allen, fully tighten the M6x20 button head screws so the cabinet cannot be removed from the mount.
- g. Unscrew the button head (M6x20) screw from the pan locking arm and loosely attach the pan locking to the wall bracket.

# AC6 Quickstart Guide

## 6. Cable the unit and set desired angle

- a. Using pre-wired cabling, wire the AC6 unit in both upper and lower locations.
- b. If WP covers are being used, install the covers at this stage.
- c. If additional cabinets are being mounted, repeat steps 5 and 6 until all units within an array are mounted.
- d. Rotate each cabinet in the array to the desired angle.
- e. Fully tighten hinge hardware and the pan lock to secure the cabinet in place. Do not overtighten.
- f. Mount the cosmetic cover (optional). Using the included M6x20 screws, attach the cover to the wall bracket to hide the hinge mechanism. Do not overtighten.



Panned wall bracket

## Flush Mount Bracket Instructions

*Tools needed: 10mm wrench or hex driver, 4mm allen*

### 1. Inventory

Before beginning installation, inventory your available hardware to items listed.

Item	Description		Quantity
A	AC6 Wall Bracket		1
B	AC6 Cabinet Bracket Assembly		1
C	Cosmetic Cover		1
D	M6 x 20 screws		2

### 2. AC6 wall bracket limits of use

- a. The AC6 flush mount bracket is designed to suspend each corresponding AC6 Series loudspeaker with a design factor of 10:1 to meet or exceed most global suspension regulations. Below are the maximum working load limits at 10:1, 7:1 and 5:1 Design Factors.

# AC6 Quickstart Guide

	Maximum Working Load Limit		
Design Factor	10:1	7:1	5:1
AC6 flush mount	75lbs (333N)	107lbs (476N)	150lbs (667N)

- b. The weight/mass is listed as the following: AC6 Flush Mount Bracket (10.3lbs, 4.7kg)
- c. The AC6 Flush Mount bracket is designed to suspend only one loudspeaker per bracket.
- d. Any geometric or structural modifications to the AC6 Flush Mount Bracket or hardware are not EAW-approved will void the warranty and may result in damage, injury, or death.
- e. **WARNING: Take care when lifting AC6 products to avoid harm or damage to product.**
- f. **WARNING: AC6 Flush Mount Brackets are for suspension of loudspeakers only. Suspension of persons is prohibited.**

### 3. Installation of AC6 flush mount bracket to surface

- a. The wall bracket must be mounted to secure structure sufficient to support the products weight. If you are unsure, please consult a qualified professional. **A minimum of two attachment points must be used, each point capable of supporting 350lb (160kg) If four points are to be used, each point can be rated at 175lb (80kg)**
- b. Mark the wall or structure where brackets will be mounted. Refer to the included customer drawing (2071359-CD) for mounting pattern. Use the points that provide the highest amount of vertical spacing.
- c. If multiple columns are being mounted, spacing should be 39.0" (990.6mm) from centerline to centerline. This can be measured from bracket top to bracket top.
- d. Product is designed for vertical mounting only. Use of level is encouraged to ensure bracket is vertical, and adjacent brackets align correctly when multiple speakers are mounted.
- e. Ensure the bracket is in the correct orientation. The wall bracket can be installed in different orientations to slide the cabinet bracket from the top or from either side.
- f. Secure the bracket to the wall with minimum of two hardware points. Each point must be capable of supporting 350 lbs. If four points are to be used, each point can be rated at 175 lbs.

*Note: For mounting to wooden studs, two of the below points must be used depending on orientation of the bracket. Install 1/4" x 3"lg 18-8 SS lag screw or M6 x 80mm lg 18-8 SS lag screw with flat washers. Mounting to metal studs is not recommend.*



# AC6 Quickstart Guide

## 4. Installation of cabinet bracket to the AC6 unit

- a. Using the desired cabinet orientation (input on bottom, or top), and desired mounting method (left, right, top) identify position of the bracket on AC6. Note position on flytrack as this will need to remain uniform for all AC6 in column.
- b. The bracket must be mounted in the orientation in which they should be connected. Either from the top or from the left or right side.
- c. Locate the flytrack studs attached to the bracket inside the flytrack on the back of the cabinet. The two locating brackets on the outside of the bracket should sit inside the flytrack ridges.



AC6 cabinet flush mount for top installation



In this orientation bracket would join left > right

- d. Using 10mm wrench or hex driver, tighten the lock nuts on the flytrack studs to secure the bracket to the cabinet. Do not overtighten. (see image to left)

# AC6 Quickstart Guide

## 5. Installation of AC6 to wall bracket

- a. Before mounting the AC6, wires should be run to the intended locations. Consider the orientation of mounting, power will either come from the top down, or the bottom up.
- b. Network, analog audio, and dry contacts can be looped from either end. Refer to user manual for more information.
- c. Using pre-wired cabling, wire the AC6 unit in both upper and lower locations.
- d. If WP covers are being used, install the covers at this stage.
- e. Using two people, line up the flush wall mount to the AC6 bracket, then slide into place.
- f. The button head screws (M6x35) on the cabinet bracket are loose, it will be tightened once the cabinet is mounted to the wall bracket. Have a 4mm allen driver available to tighten immediately. **The cabinet should not be left unattended if this hardware has not been tightened.**
- g. Using 4mm allen, tighten the button head screws so the cabinet cannot be removed from the mount.
- h. . If additional cabinets are being mounted, repeat steps 5 and 6 until all units within an array are mounted.



Installed flush mount bracket

# AC6 Quickstart Guide

## Maintenance of an AC6 Bracket installation

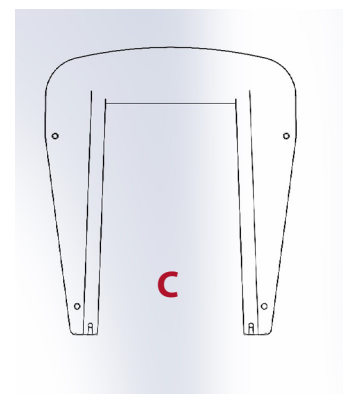
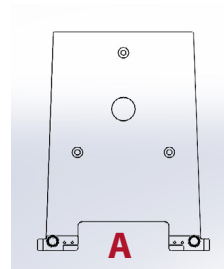
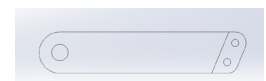
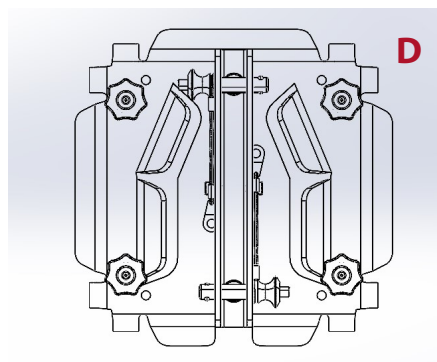
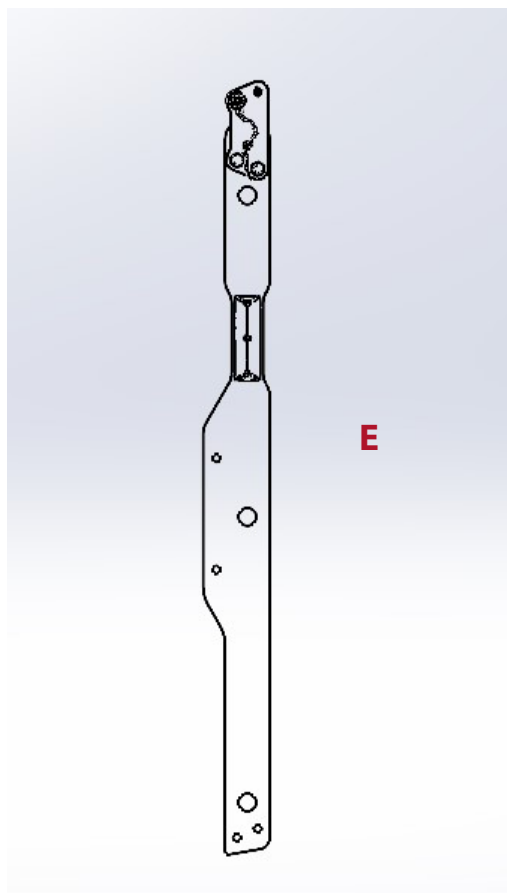
- a. **WARNING: Not following Maintenance instructions could result in equipment damage, serious injury or death.**
- b. Maintenance should only be performed by an experienced technician.
- c. As with any professional loudspeaker system, routine maintenance must be conducted in order to ensure the longevity and safe, consistent performance.
- d. Inspect the AC6 Wall Bracket for corrosion and other damage. Brackets with visible damage should be replaced and discarded.
- e. Inspect hardware securing the u-bracket to the mounting surface for corrosion or looseness. Tighten loose hardware and consider installing hardware locking methods. Replace and discard corroded hardware.
- f. Inspect hardware mounting the AC6 loudspeaker to the bracket for corrosion or looseness. Tighten loose hardware. Replace and discard corroded hardware.
- g. For weather protected applications (using WP Covers), inspect hardware sealants for cracking or gaps in sealant. Replace damaged sealant with user-supplied, waterproof, non-hardening, non-locking sealant per the sealant's instructions. Failure to do so could result in water ingress and damage to the loudspeaker.
- h. Clean the AC6 Wall Bracket and AC6 Loudspeaker with a dry cloth.

# AC6 Quickstart Guide

## Stinger Instructions

Inventory your kit

Part #	Part Name	Quantity	Reference
2071927-9999	PLATE LOCKING ASSY	1	A
2071924	M5X20 FLH SKT SS BLK	7	B
2071918-9999	Slide Plate	1	C
2072045-9999	Stinger Mount	2	D
2072041-9999	Stinger	2	E
2071404-9999	Mohawk	1	F



# AC6 Quickstart Guide

## Prepare AC6 for Stacking

1. Attach Locking Plate (A) to the top of the first AC6
  - Remove 3x M5x12mm screws from top of AC6 (Figure 1).
  - Position Locking Plate over open holes, then use 3x screws (B) to secure plate to the cabinet (Figure 2)

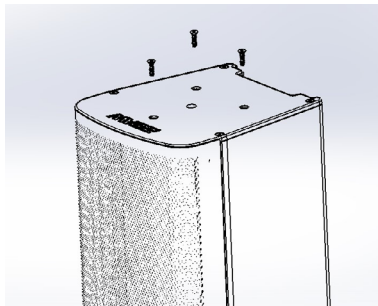


Figure 1 - Remove screws

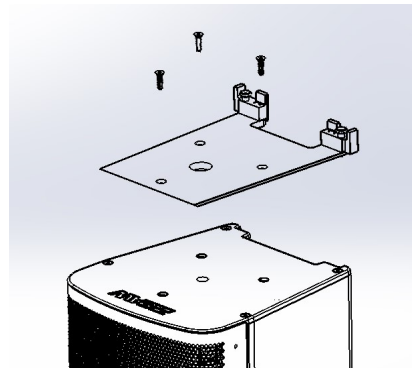


Figure 2 - Install Locking Plate

2. Attach slide plate (C) to bottom of next AC6
  - Remove 4x M5x12mm screws from bottom of AC6 (Figure 3).
  - Position Slide Plate over open holes, then use 4x screws (B) to secure plate to the cabinet (Figure 4)

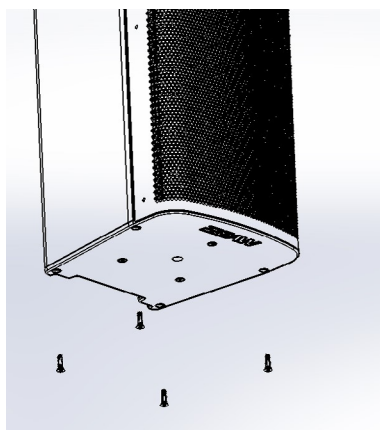


Figure 3 - Remove screws

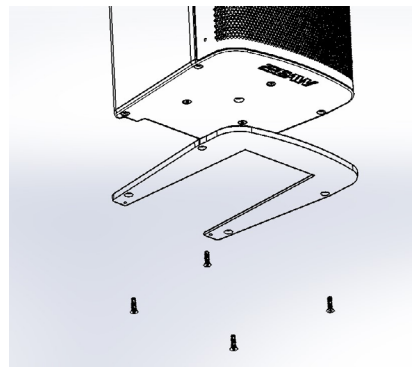


Figure 4 - Install Slide Plate

# AC6 Quickstart Guide

## Connect two AC6 Column loudspeakers with stacking plates

### 3. Attach two AC6 columns

- Slowly lay down AC6 with slide plate grill down on a rug or blanket
- Insert next unit with locking plate to connect (Figure 5)
- On rear of first AC6 locking plate, rotate both screw knobs clockwise to lock into position.

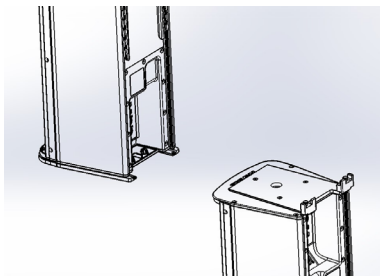


Figure 5 - Attach AC6 columns

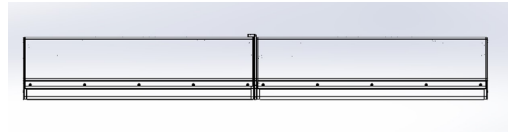


Figure 6 - AC6 columns grill down

## Attach Stinger to AC6 Array

### 4. Attach Stinger Mounts (D) to AC6

- Center the mount on the Flytracks for each AC6 (Figure 6)
- Turn the knobs on the mount clockwise to lock into place.

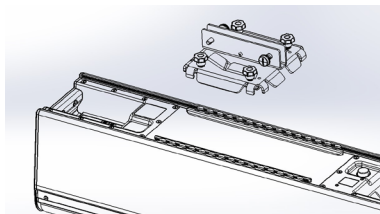


Figure 7 - Position Mount

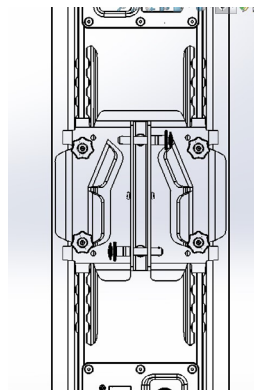


Figure 8 - Stinger Mount attached

# AC6 Quickstart Guide

## 5. Attach Stinger (E) to Mounts

- Place stingers in place on the mounts (Figure 9)
- Use supplied pins to secure the two stingers together
- Using pins on mount, secure stinger assembly to mount plates (Figure 10)

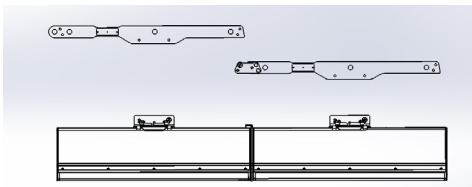


Figure 9 - Position Stingers on mounts

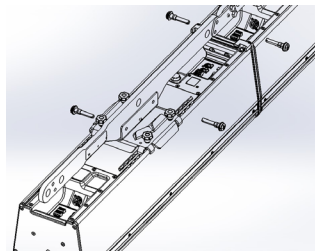


Figure 10 - Pin stinger assembly to mount plate

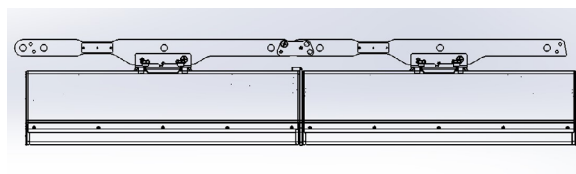


Figure 11 - Stingers assembled with AC6 array

## 6. Attach Mohawk (F) and suspend/fly array

- Attach Mohawk with pins at the end of the stinger (Figure 12)
- Once all pins and knobs are verified as secure, suspend array using a shackle.

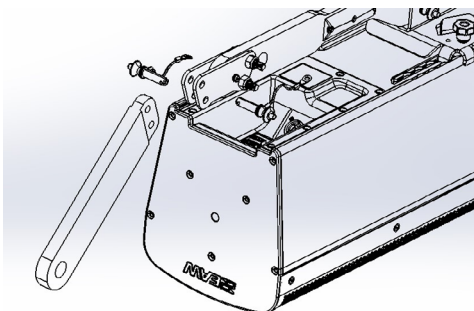


Figure 12 - Attach Mohawk to Stinger

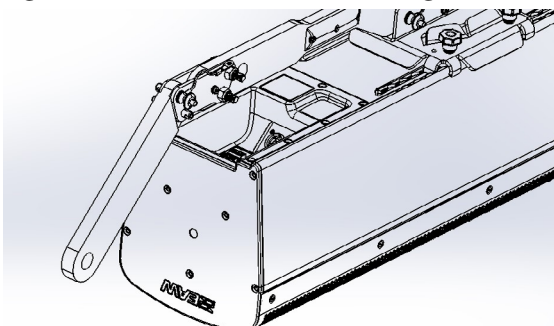


Figure 13 - Mohawk installed on Stinger

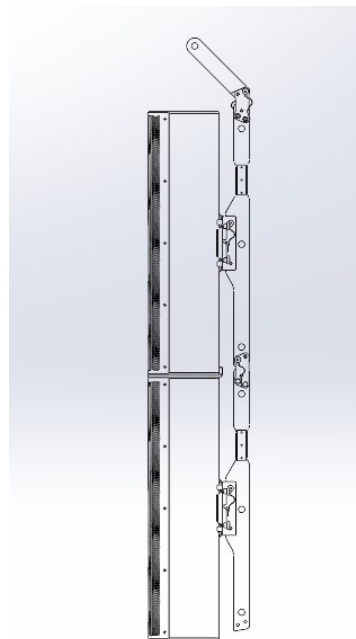


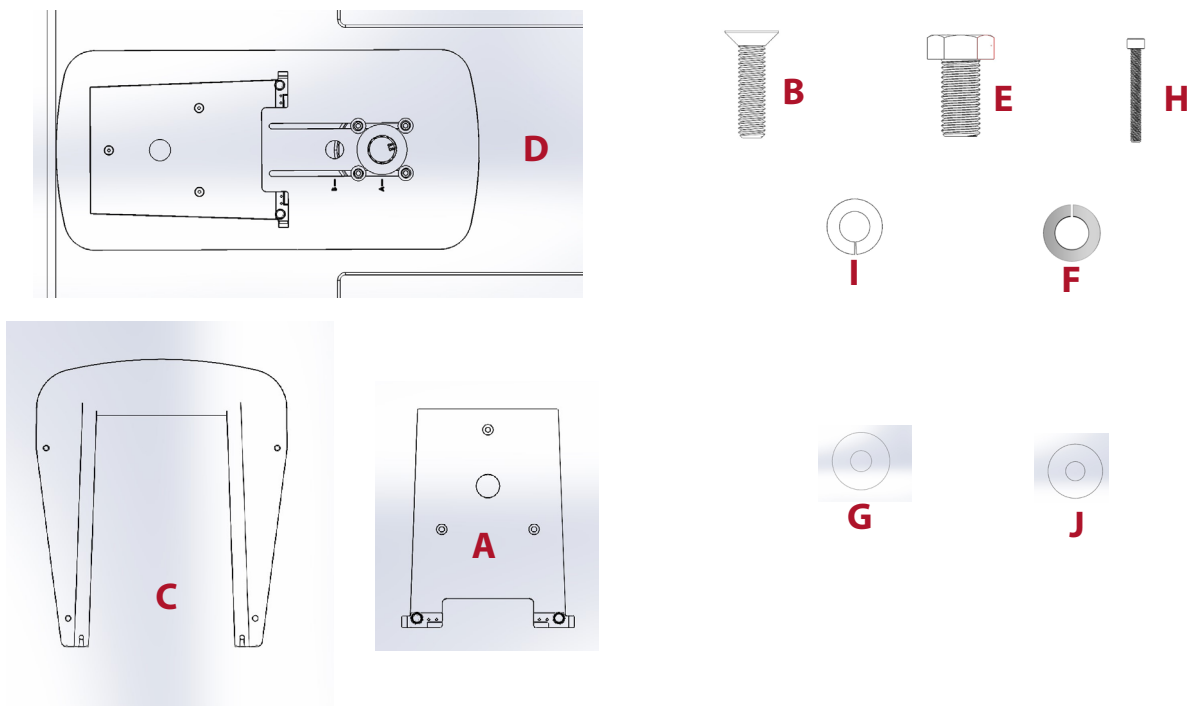
Figure 14 - Completed Stinger Array

# AC6 Quickstart Guide

## Stacking Plate Instructions

Inventory your kit

Part #	Part Name	Quantity	Reference
2071927-9999	PLATE LOCKING ASSY	1	A
2071924	M5X20 FLH SKT SS BLK - Use w/Reference A	3 per assembly	B
2071924	M5X20 FLH SKT SS BLK	4 per plate	B
2071918-9999	Slide Plate	2	C
2071929-9999	MOUNT PLATE ASSY AC6	1	D
2071920	SCREW M20X40 HHCS SS BLK OX	1	E
2071922	WASHER CURVED LOCK M20X34mm	1	F
2071923	WASHER FLAT M20 X 60mm OD SS BLK OX	1	G
0022095	SCREW M6 X 55 SHCS BLK	4 per assembly	H
105059	WASHER SPLIT-LOCK M6 SS BLK	4 per assembly	I
2071921	WASHER FLAT M6 X18mm OD SS BLK OX	4 per assembly	J



# AC6 Quickstart Guide

## Required Tools & Supplies

- M3 Allen Wrench
- M4 Allen Wrench
- 30mm Wrench

## Prepare AC6 for Stacking

1. Attach Locking Plate (A) to the top of the first AC6 (If using with subwoofer mount plate, follow instructions in step 2 to attach slide plate to bottom of first AC6)

- Remove 3x M5x12mm screws from top of AC6 (Figure 1).
- Position Locking Plate over open holes, then use screws (B) to secure plate to the cabinet (Figure 2)

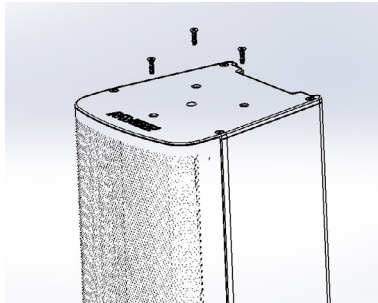


Figure 1 - Remove screws

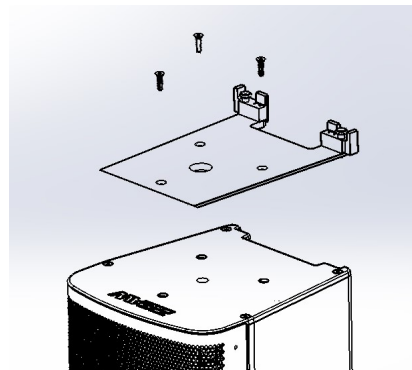


Figure 2 - Install Locking Plate

2. Attach slide plate (C) to bottom of next AC6

- Remove 4x M5x12mm screws from bottom of AC6 (Figure 3).
- Position Slide Plate over open holes, then use screws (B) to secure plate to the cabinet (Figure 4)

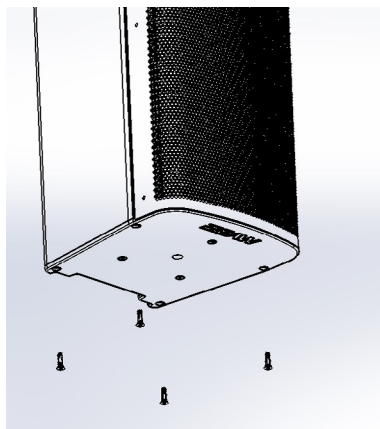


Figure 3 - Remove screws

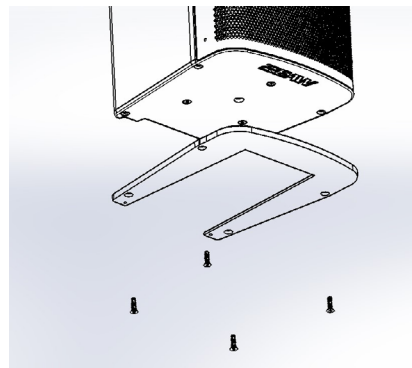


Figure 4 - Install Slide Plate

# AC6 Quickstart Guide

## Prepare Subwoofer Mount Plate for Stacking (if applicable)

### 3. Attach Mount Plate (D) to the top of SBX218/SBX118/RSX18F (Figure 5)

- Remove M6x35mm screws from subwoofer pole mount.
- Place Mount Plate on top of subwoofer, aligning hole **A** with pole cup.
- Lock into place with M6 screws (H), lock washer (I) and flat washer (J)
- Secure mount with M20 Screw (E), lock washer (F) and flat washer (G)

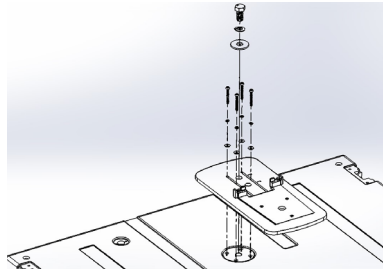


Figure 5 - Attach Mount Plate

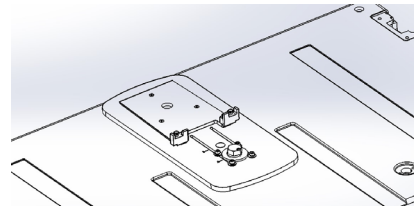


Figure 6 - Mount Plate installed

## Configure AC6 Column on Subwoofer Mount Plate

### 4. Attach first AC6 to Subwoofer with mount plate

- Using two people, lift AC6 and line up bottom slide plate with subwoofer mount plate
- Slide into place (Figure 7). An audible clicking sound may be heard if pins are not in up position.
- On rear of mount plate, rotate both pin knobs clockwise to lock into position.

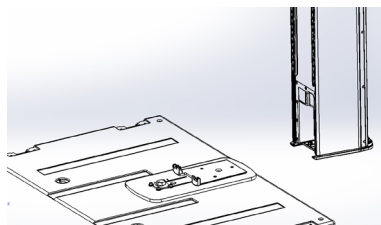


Figure 7 - Slide first AC6 to mount plate

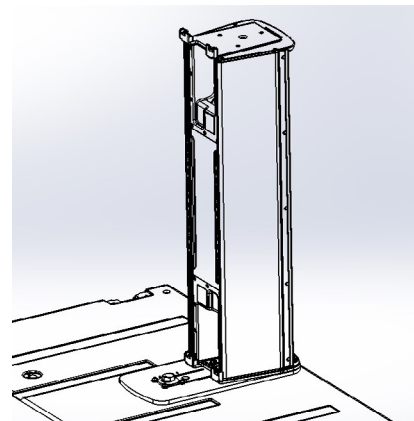


Figure 8 - AC6 Installed on mount plate

# AC6 Quickstart Guide

## Connect two AC6 Column loudspeakers with stacking plates

5. Attach two AC6 columns (Procedure is the same whether using Subwoofer Mounting Plate or not)

- Ensure first AC6 (bottom position) is standing flat on a surface or locked into place with the subwoofer mounting plate.
- If connecting a second AC6 on a subwoofer stack, using two steady ladders and two people, lift second AC6 and line up slide plate with the first AC6 locking plate.
- If connecting the second AC6 to first AC6 without utilizing the subwoofer mount plate, a ladder may not be needed. Still using two people, position second AC6 slide plate to line up with first AC6 locking plate.
- Slowly slide into plate until an audible click is heard. (Figure 9)
- On rear of first AC6 locking plate, rotate both screw knobs clockwise to lock into position.
- When using subwoofer mounting plate, only two AC6's are supported.

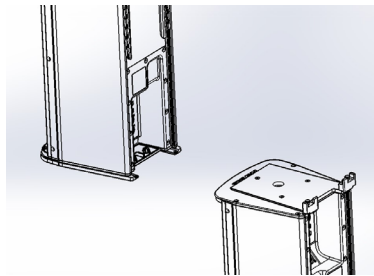


Figure 9 - Attach AC6 columns

# AC6 Quickstart Guide

## Pole Mount Instructions

These instructions are for the various ways to install the AC6 pole mount kit. There are three available mounting options with this kit:

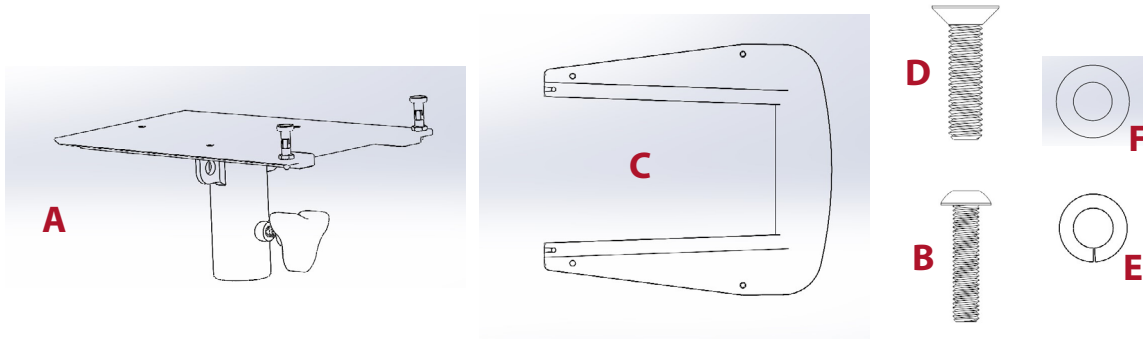
- Pole Mount installed with slide plate and screws as support
- Pole Mount with screws only
- Pole Mount with slide plate and no screws

## PREPARATION

1. Confirm the configuration of the AC6 arrays:
  - Number and location of AC6 column arrays to be deployed
  - Location and quantity of audio, network, and power cabling needed
2. Ensure that speaker stands are rated to hold weight of AC6 (70lbs)

## Inventory your kit

Part #	Part Name	Quantity	Reference
2072035-9999	ASSY POLE MOUNT PLATE	1	A
2071924	M5X20 FLH SKT SS BLK	4	B
2071918-9999	Slide Plate	1	C
2072040	SCREW M5X22 BH SS BLK ZC	3	D
0016417	WASHER LOCK M5 BLK	3	E
2071679	WASHER FLAT M5 SS BLK ZC	3	F



# AC6 Quickstart Guide

## Required Tools & Supplies

- 3mm Allen Wrench

## Install Pole Mount with screws and slide plate

### 1. Attach slide plate to bottom of AC6

- Remove 4x M5x20 outer screws from bottom of AC6 for slide plate(Figure 1).
- Position Slide Plate over open holes, then use screws (B) to secure slide plate to the cabinet (Figure 2))
- Remove 3x M5x20 inner screws from bottom of AC6 for pole mount plate.

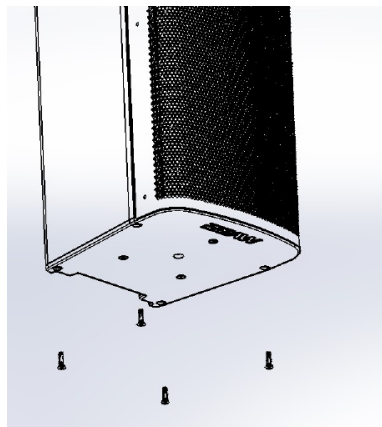


Figure 1 - Remove screws

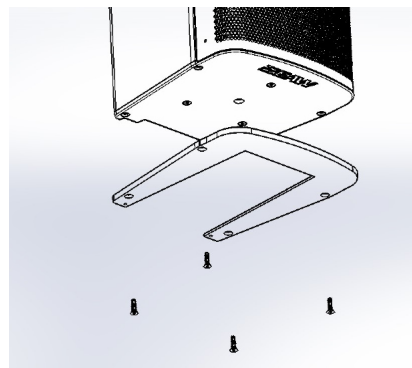


Figure 2 - Install Slide Plate

### 2. Slide Pole Mount Plate into Slide Plate (Figure 3)

### 3. Install flat washers (F), locking washers (E) and M5x22 screws (D) to secure Pole Mount Plate in place (Figure 4)

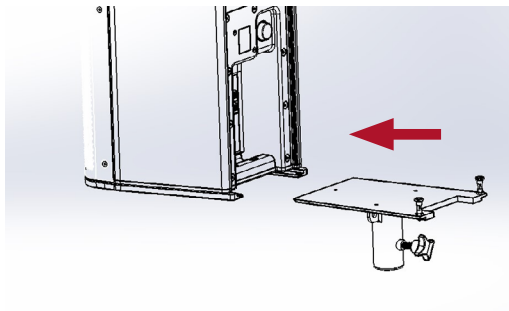


Figure 3 - Slide Pole Mount into place

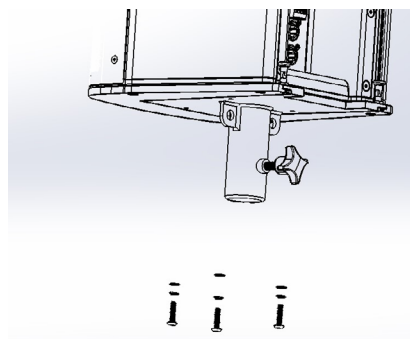


Figure 4 - secure screws and washers to Pole Mount & Cabinet

# AC6 Quickstart Guide

## Install Pole Mount with screws and **NO** slide plate

### 1. Attach Pole Mount to bottom of AC6

- Remove 3x M5x20 inner screws from bottom of AC6 for pole mount plate.
- Position Pole Mount Plate on bottom of AC6 (Figure 5).
- Secure plate into place using M5X2 screws (D), lock washer (E), and flat washer (F) (Figure 6)

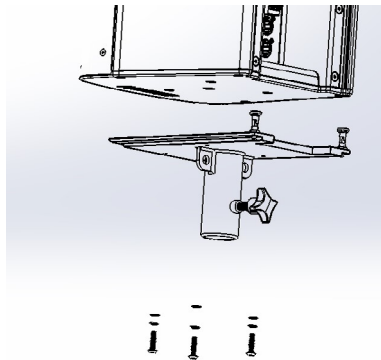


Figure 5 - Position Pole Mount Plate

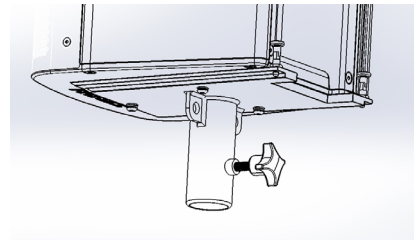


Figure 6 - Pole Mount, No slide plate

## Install Pole Mount with **NO** screws and slide plate only

### 1. Attach slide plate to bottom of AC6

- Remove 4x M5 screws from bottom of AC6 (Figure 7).
- Position Slide Plate over open holes, then use 4x M5x20 (B) to secure slide plate to the cabinet (Figure 8)

### 2. Slide Pole Mount Plate into Slide Plate (Figure 9)

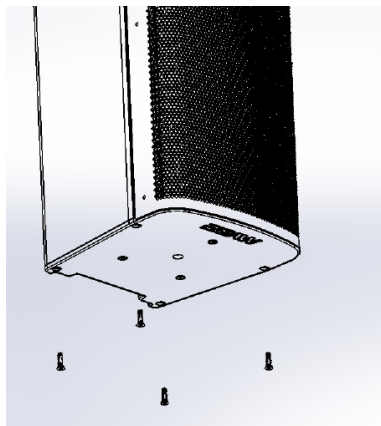


Figure 7 - Remove screws

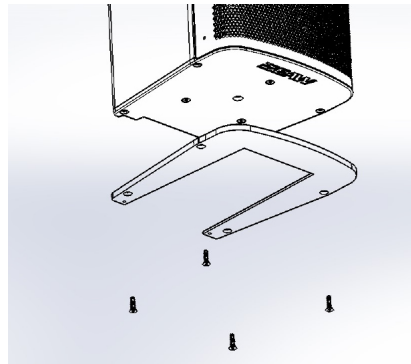


Figure 8 - Install Slide Plate

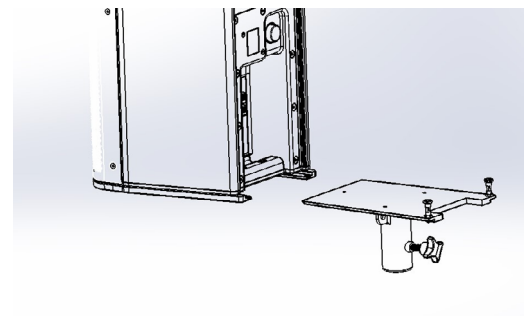


Figure 9 - Slide Pole Mount into place

# AC6 Quickstart Guide

## Installing Weather Protection Covers

Be sure to reference the installation instructions for the mounting solution, since the sequence may vary depending on how the array will be suspended.

*NOTE: Instructions must be followed completely to ensure water tight seal. Failure to properly install weather protection covers could result in premature product failure and/or void the warranty.*

## Preparation

1. Confirm the configuration of the AC6 arrays:

- Number of AC6 modules
- Location and quantity of audio, network, and power cabling. One end of each cable must be left unterminated to pass through the knockouts.
- Identify if covers will be fitted before or after mounting (refer to mount instructions)

2. Based on the quantity of AC6 modules determine the quantity of covers required:

- 2X End Cover – (1) per array
- Joint Cover – One less than number of speakers in array [i.e. (2) for (3) speakers]



**WARNING: Installation should only be done by an experienced technician. Wear safety glasses and take proper safety precautions when using tools.**

## Inventory your kit

### End Cover (each kit)

Qty	Description
2	Input Cover
2	Input Cover Gasket
18	M5 x 18 Buttonhead Head Allen Drive Screws
3	3/4" Gland Nuts



# AC6 Quickstart Guide

## Joint Cover (each kit)

Qty	Description
1	Input Joint Cover
1	Input Joint Cover Gasket
1	Joint Gasket
18	M5 x 18 Buttonhead Head Allen Drive Screws
3	3/4" Gland Nuts



## Required Tools & Supplies

- 3mm Allen Wrench
- Flat head screw driver
- Mallet or Hammer
- Torque Driver (with 3mm Hex/Allen bit)
- Thread locker, Medium Strength - Loctite 242, Herson 423, or equivalent.

## Remove cable knock outs (as needed)

- Place a flat head screwdriver into the slot of a 3/4" knockout that is to be removed.
- Hit the end of the screw driver to shear the knockout and remove the rest of the knockout by hand if necessary.
- If burrs remain, remove them with a countersink or deburring tool.



*Note: 1/2" knockout size is for reference only and must be drilled out.*

- To make the connection water tight, a 3/4" (or 1/2" as needed) gland nut (included), rigid conduit adapter or flexible conduit adapter (not included) should be fitted to each knockout prior to installing cables.
- Silicone sealant should be used as needed to make any cable connections water tight.