

# COSLUS

## ACTIVATE YOUR **24-MONTH** WARRANTY FOR FREE



\* Please contact customer service if you're unable to provide the order number

[www.coslus.com/warranty](http://www.coslus.com/warranty) 



Win Free Accessories




Covered by 24-Month Warranty



Friendly Responsive Customer Service

**Expire time:** 7 days after the delivery date

 +1 855 594 3950 (8am-5pm Mon. - Fri. (EST))

 [support@coslus.com](mailto:support@coslus.com)

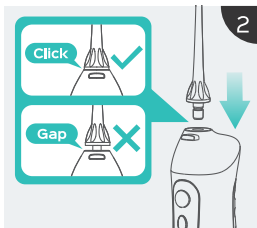
*FLIP* →

# QUICK GUIDE

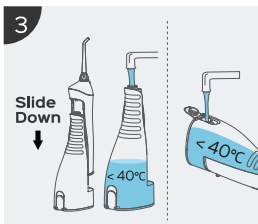
Scan QR code to watch the operation video. >>



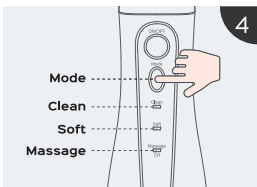
To minimize environmental impact, we recommend using your phone adapter (5V 1A/2A). Please contact us if you need a new one.



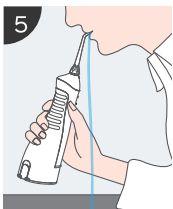
Install nozzle



Fill water



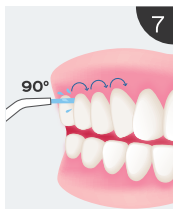
! Slight bleeding is normal for first-time use or sensitive gums. Recommend using "soft" mode for a week. If bleeding continues, consult a dentist for possible gum disease and follow their advice.



! For first-time or sensitive gums, use the periodontal tip with soft mode for gum protection.



Start irrigating



! Align at 90° to the gum line, not on the gums, to prevent irritation.