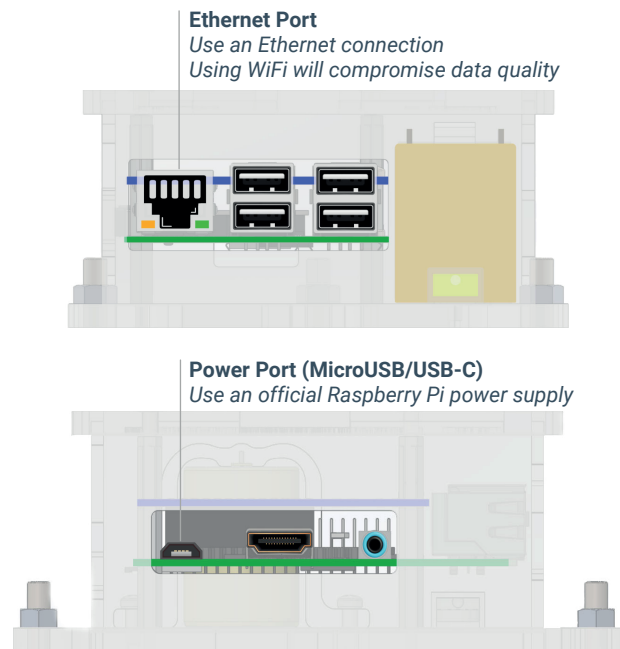


# 1. Welcome to your Shake

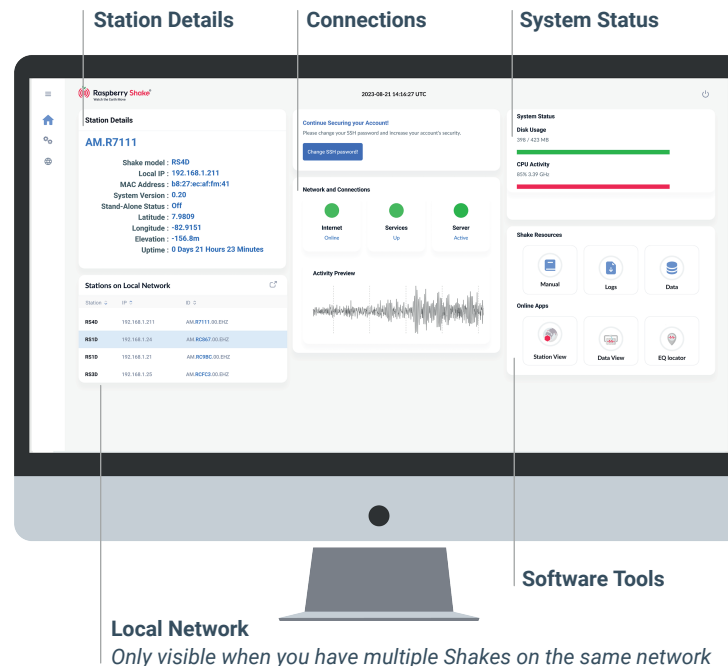
Connect your Shake to your network  
**Plug in the Ethernet cable first, then the Power cable**



After the initial power-up, your device may take 10-20 minutes for automatic updates. Please be patient as the device won't be accessible during this time. Once updates are installed, you will be able to access <http://rs.local/> and resume setup.

# 2. From your browser, go to <http://rs.local/>

Follow on-screen instructions to get up and running



Quickly access key functions from the main dashboard and navigate through menu options using the sidebar.

# 3. Explore our Software Ecosystem

Maximize your Shake experience with our mobile and web-based software suite



Monitor Earth's Seismic Heartbeat. Anytime. Anywhere.  
Find out more at [raspberrysake.org/ecosystem](http://raspberrysake.org/ecosystem)

## Questions?

For quick answers to your questions, visit: [raspberrysake.org/welcome](http://raspberrysake.org/welcome)

## Manual

Learn more about setting up and using your Shake at [manual.raspberrysake.org](http://manual.raspberrysake.org)

## Technical Support Forum

For technical support, visit: [community.raspberrysake.org](http://community.raspberrysake.org)

## Contact

For non-technical support inquiries, contact us at: [raspberrysake.org/contact](http://raspberrysake.org/contact)

## INFO

## How do I see my first earthquake?

Easily visualize earthquakes of all sizes and intensities on our ShakeNet mobile and web apps. Go to: [raspberrysake.org/welcome](http://raspberrysake.org/welcome)

## What if `http://rs.local/` does not open in my browser?

- If a search or an empty web page appears instead of the Shake configuration screen, add a forward slash to the local address, like this: `http://rs.local/`
- There is a possibility that your Shake is still completing the initial update process. The time varies depending on the internet connection speed, so try again in a little bit.
- You can try to find the IP address of your Shake from your router admin panel, or with an app like Fing. Enter the IP into your browser, which will open the same `http://rs.local/` configuration page.

## How long does it take for my Shake to appear on ShakeNet?

Your new Shake should appear on ShakeNet mobile and web apps within 1 hour, typically faster.

## What if I have a restricted network (e.g., a firewall at schools or the office)?

Talk with your IT administrator to add your Shake's MAC and/or IP address to their system. You can always find support on the Manual and on the Forum!

## Does my Shake need a dedicated computer?

Nope, your Shake does not need a dedicated computer - it already is one!

## What is an ideal location for my Shake after initial setup?

The best location for your Shake is the "quietest" place possible. In some cases, this could be on a concrete slab of the lowest floor of your building, near a foundation wall, and away from washing machines, air conditioners, and similar "noisy" things. Regardless of where you set it up, your Shake will capture every vibration around you!

## Why might my Shake be constantly rebooting/not turning on/displaying gaps in the data?

We recommend checking the output of your power supply as the Shake requires a stable power source that delivers at least 2.5 Amps at 5.1 Volts (RPI 3B models), or 3.0 Amps at 5.1 Volts (RPI 4B models). For optimal performance, we recommend using official Raspberry Pi-manufactured power supplies. Inadequate power supply units, such as smartphone chargers, can cause the device to reboot frequently, fail to start, or suffer data loss and stability issues. Always ensure your power supply meets the required specifications.

## FAQs



**Raspberry Shake**<sup>®</sup>

Watch the Earth Move

# Quick Start Guide

