



# EMİN ALÜMİNYUM

Aluminum - Glass - Automation Systems - Wholesale Marketing



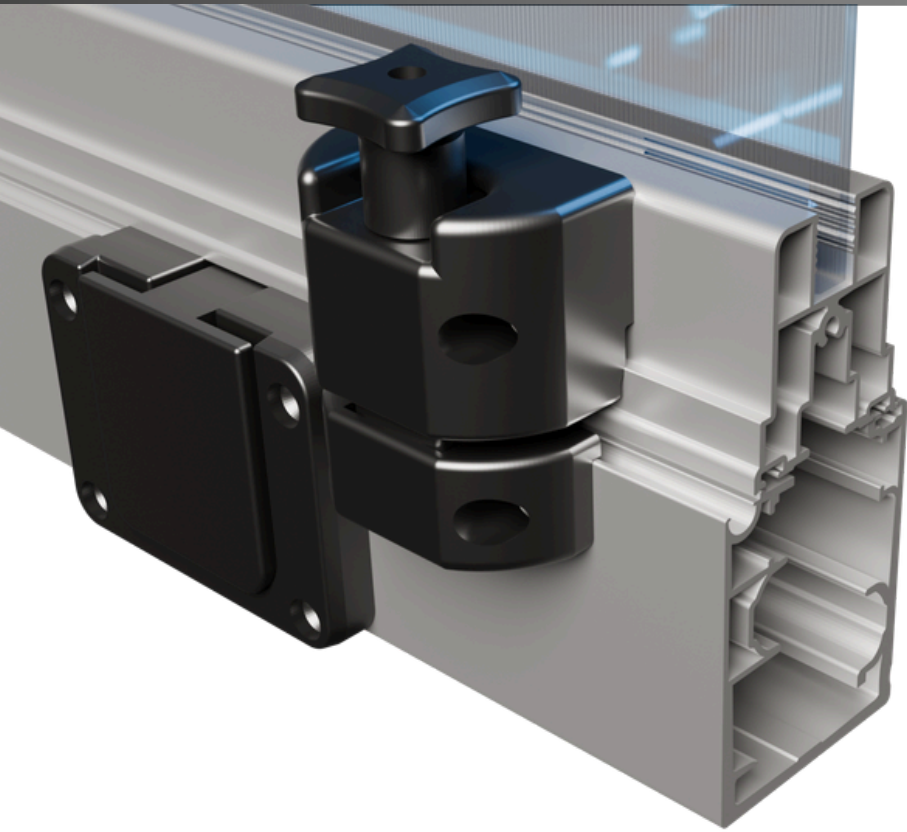
# Balcony Glazing System

ROUTA

R45

RK45

RK45+

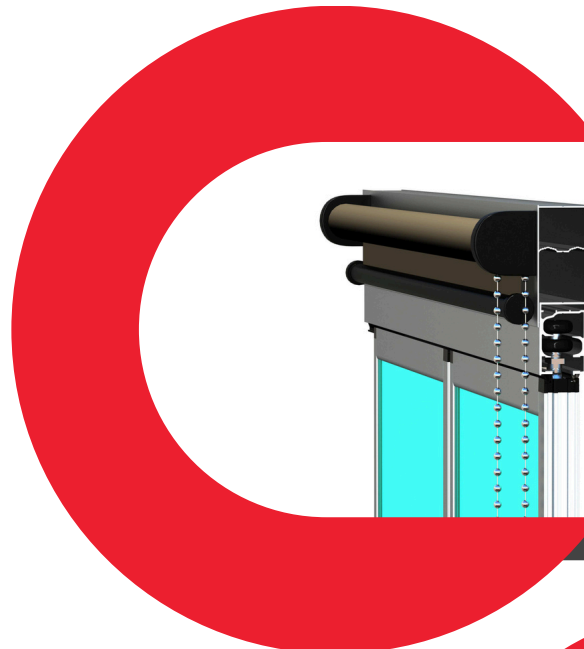


## Areas of Use:

Hotels, Cafés, Restaurants, Room Partitions, Verandas, Bars, Tea Gardens, Terraces, Holiday Homes, Villas, Summer Houses

Glass balcony systems are premium living solutions that combine architectural aesthetics with superior comfort. Designed in accordance with the needs of modern living spaces, these systems transform balconies and terraces into exclusive areas that can be enjoyed throughout the year.

Thanks to high-strength tempered glass and aluminum profiles manufactured with precision craftsmanship, glass balcony systems provide maximum resistance against external weather conditions while maintaining their original appearance for many years. By contributing to thermal and acoustic insulation, they create a calmer, more balanced, and more efficient environment in living spaces.

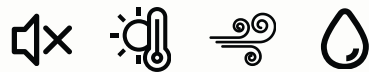


R45-RK45 : Compatible with pleated and roller blinds.

RK45+ : Compatible with pleated, roller, and integrated (in-glass) Venetian blinds.



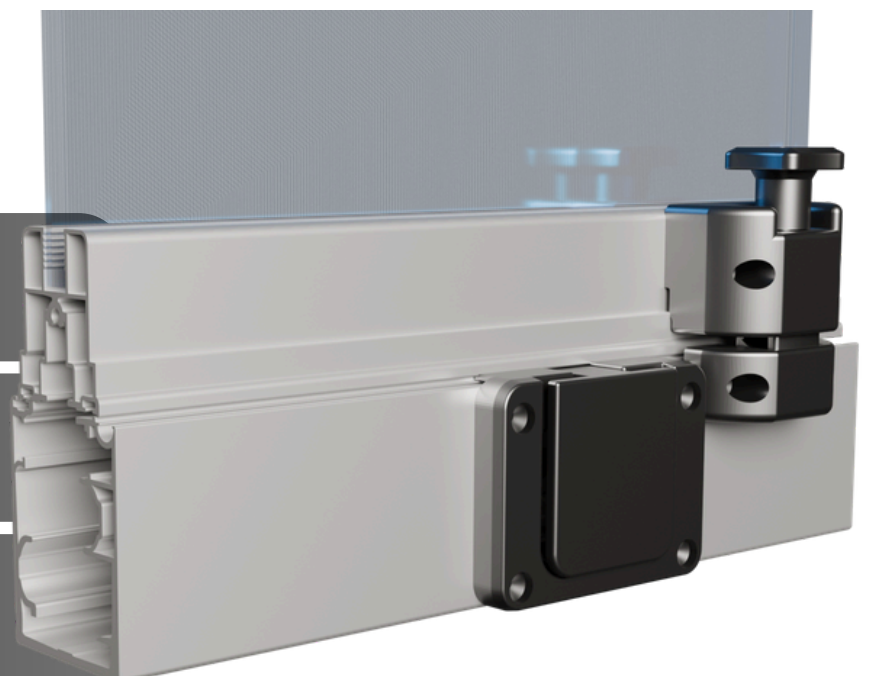
Although the level of performance varies depending on the model, glass balcony systems provide sound, thermal, wind, and water insulation.



**R45** It is the most fundamental sliding-folding glass enclosure system, featuring 8 mm thick tempered glass and a lightweight, durable, and practical structure.

**RK45** It is a sliding-folding glass enclosure system that offers improved sound and water insulation, featuring 8 mm thick tempered glass and a cassette system with a robust frame structure.

**RK45+** It is a sliding-folding glass enclosure system that offers top-level thermal, acoustic, and water insulation, thanks to its cassette system with a robust frame structure, with tempered glass and double glazing (4-22-4) options.

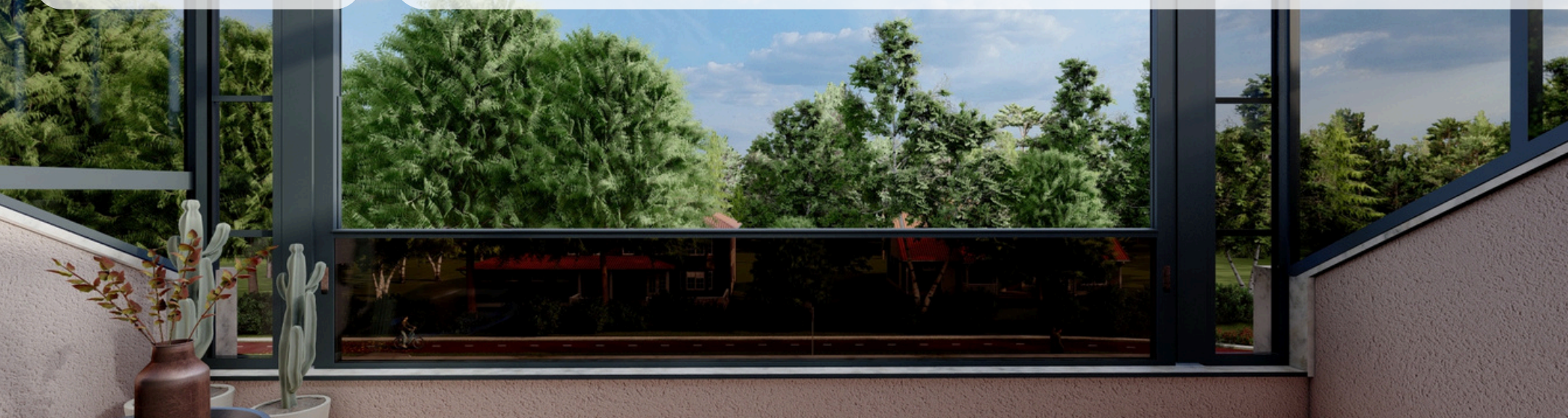


GT125



GT155+

# Guillotine Vertical Glass System



The remote-controlled guillotine glass balcony system stands out with its innovative design and wide range of applications. Available with chain-driven and steel belt-driven alternatives, this system offers easy and comfortable operation thanks to its motorized mechanism. Guillotine systems can be applied with both insulated glass units and 8 mm tempered glass options, providing superior thermal and acoustic insulation. With its tilt (vasistas) opening feature, it allows safe and controlled ventilation, while in the open position it functions as a glass balustrade. When closed, it creates a calm, protected, and fully insulated space.

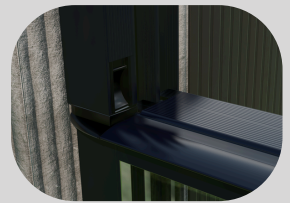


Secure ventilation and easy cleaning thanks to the tilt-and-turn sash window system.



Areas of Use:

Balconies, Cafés, Restaurants, Terraces, Villas, Hotels, Verandas, Offices, Summer Houses, Greenhouse Systems



GT125

It is a vertically sliding, motorized glass enclosure system with 8 mm glass panels.

GT125+

It is a vertically sliding, motorized glass enclosure system with 4-16-4 insulated glass units.



The GT125 and GT125+ systems are designed to effortlessly transform your spaces into either a secure balcony enclosure or a fully equipped glass enclosure that is resistant to heat, sound, wind, and rain—without ever compromising on safety.

ES 67



ES 90

EST 90

EST 126

# High-Performance Aluminium Sliding Systems

**Areas of Application:** Residential Entrances Balconies & Terraces Hotels  
Verandas & Patios Restaurants & Cafés Gardens & Outdoor Living Spaces Swimming Pool Areas Penthouses & Lofts  
Offices Shopping Centres Summer Houses & Holiday Villas Greenhouse & Conservatory Systems



Aluminum sliding glass systems elevate energy efficiency to the next level with their superior insulation properties. Equipped with double-glazing technology, these panels minimize heat loss while enhancing comfort in your living spaces. By significantly reducing energy loss from door and window openings, this system seamlessly combines aesthetics with functionality.

Routa sliding systems ensure superior heat, sound, wind, and water insulation for everyday use, elevating the overall comfort of your living environment.



ES 67

Single Glazed Standard Sliding

ES 90

8mm Single Glazed 2nd Generation Sliding



EST 90

Next-Gen Double Glazed Sliding System

EST 126

Aluminium Lift & Slide System (Hebe-Schiebe)

# Hebeşibe (Hebe-Schiebe)

## What is an Aluminum Hebe-Schiebe System?

An Aluminum Hebe-Schiebe system, also known as an Aluminum Lift-and-Slide Door System, is a high-performance sliding door solution designed for large and heavy glass panels. The system operates with a special handle mechanism that slightly lifts the aluminum door panel from its sealing gaskets. Once lifted, the panel moves smoothly along the rail, allowing large openings with minimal effort.

When the handle is returned to the closed position, the panel lowers onto the seals, creating a tight closure that ensures excellent thermal insulation, sound insulation, and weather resistance.

Thanks to its strong aluminum structure, the system provides high durability and stability even with large glass surfaces. It is an ideal solution for creating wide openings that connect indoor and outdoor spaces while maintaining modern architectural aesthetics.



Terraces  
Balconies  
Gardens  
Villas and residential buildings  
Hotels, cafés, and restaurants





# EMİN ALÜMİNYUM

Aluminum - Glass - Automation Systems - Wholesale Marketing

## Aluminum Joinery

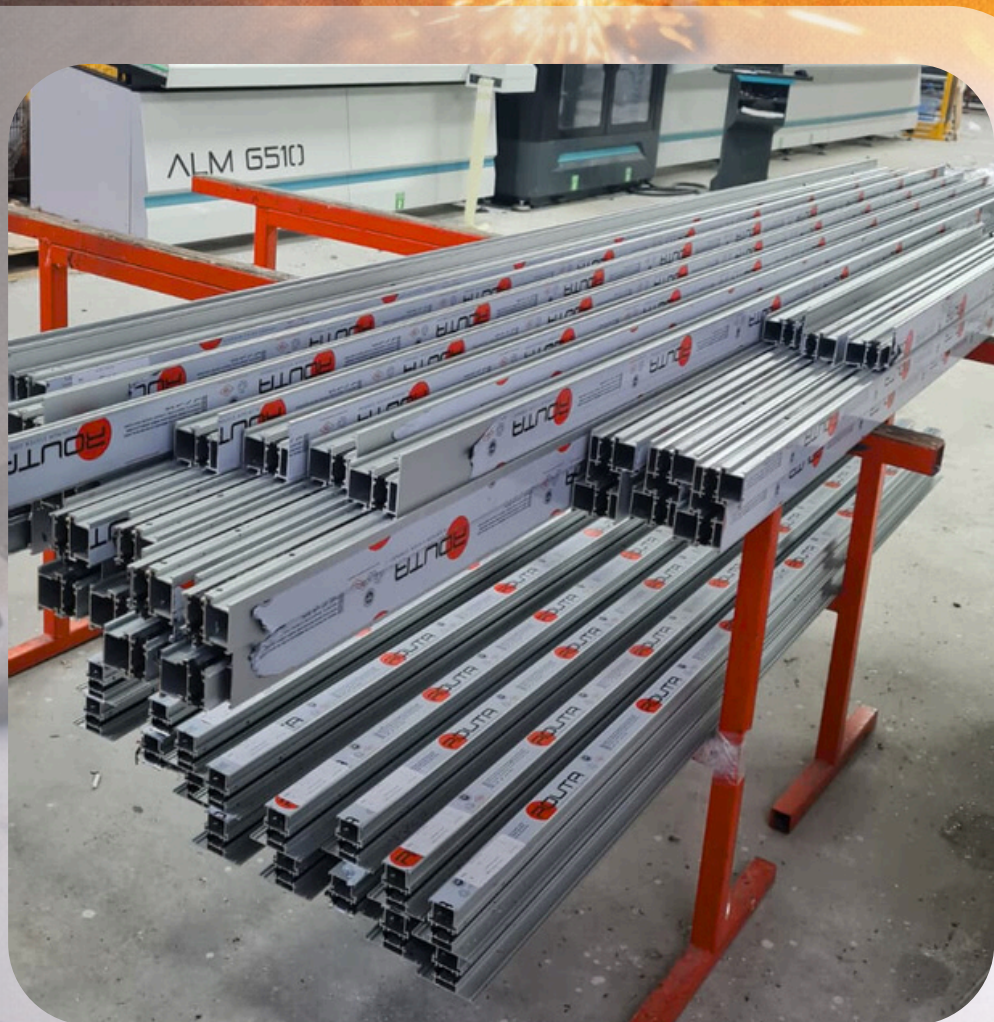
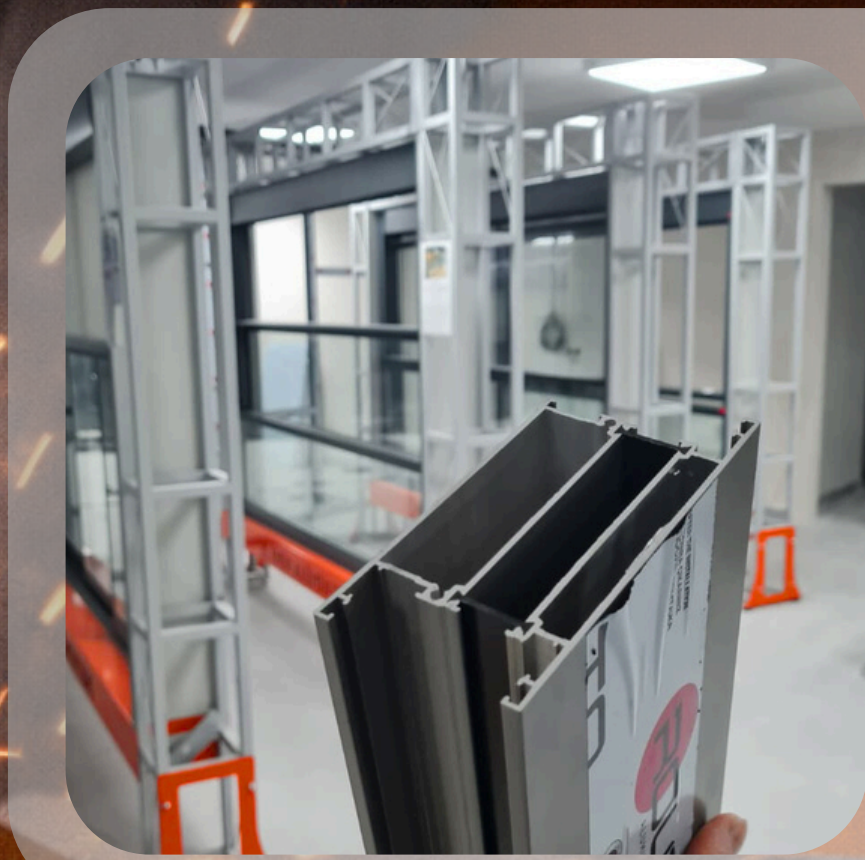
EW55

EW<sup>T</sup>55

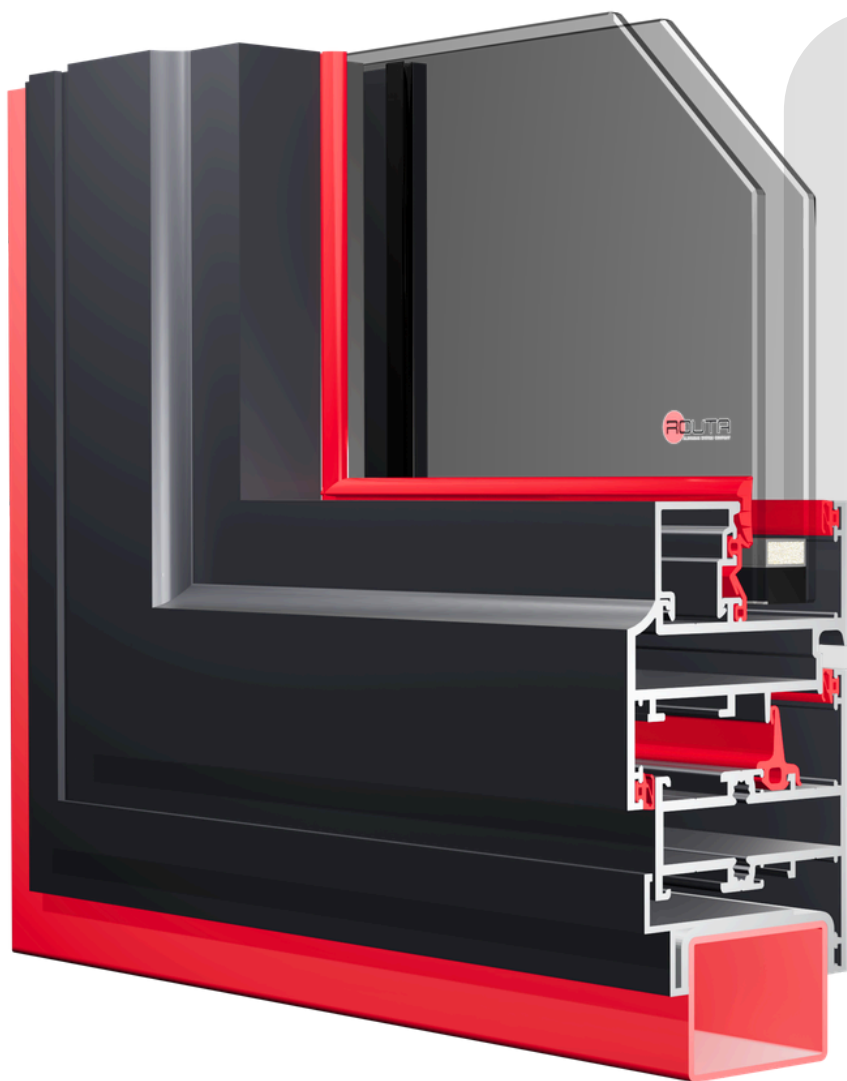
EW<sup>T</sup>65

EW<sup>T</sup>75





ALUMINUM SYSTEM **ITA**



"The 3-tier gasket structure utilized in the EW55 Non-Thermal Openable System provides advanced sealing performance, significantly enhancing air and water tightness despite being a non-thermal system. It ensures smooth operation, reduces wind infiltration, and increases the overall durability of the system, offering a reliable and comfortable user experience for non-thermal opening requirements."

## Technical Specifications

- Frame Width: 55 mm
- Frame Height: 40 mm
- Sash Width: 610 mm
- Sash Height: 625 mm

## Application Features

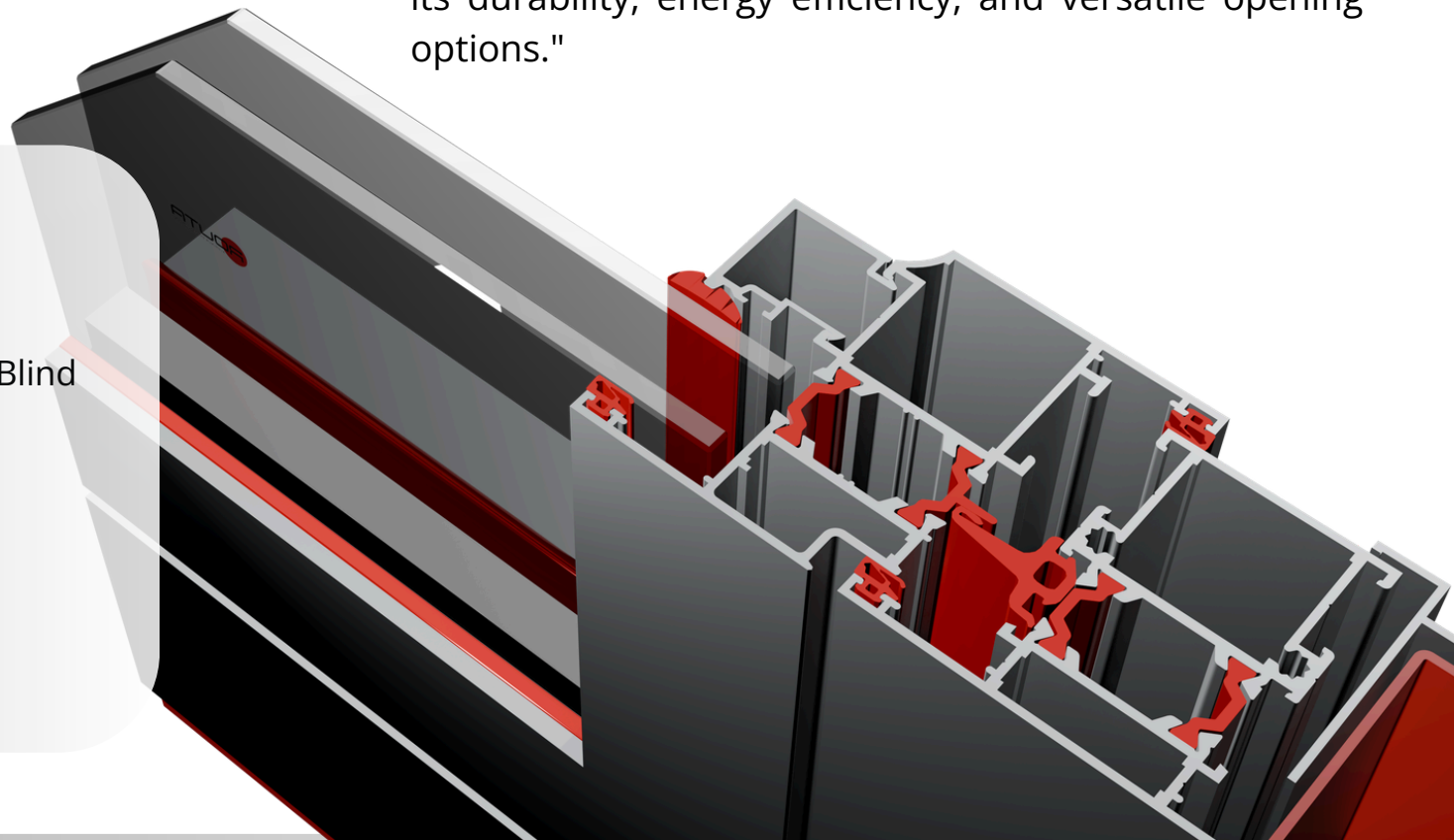
- Ease of Use & Functionality
- Double Glazing Application
- 3-Tier Gasket System
- Acoustic Insulation
- Single or Double Glazing Options



The **EWT55 Thermal Openable System** delivers superior thermal and acoustic performance through advanced insulation technology. Designed to meet modern architectural demands, the system creates comfortable, high-performance living spaces through its durability, energy efficiency, and versatile opening options."

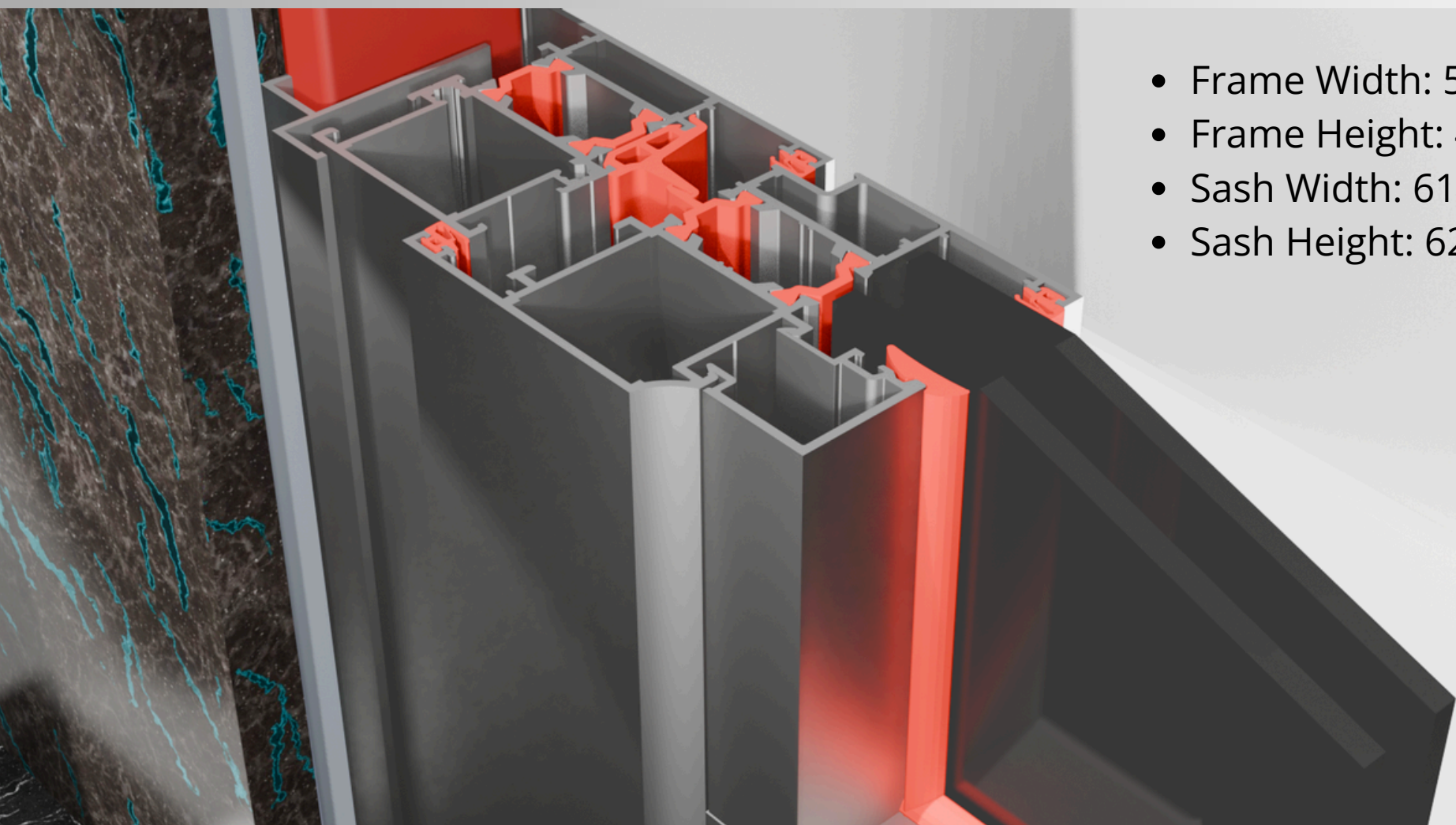
## Ease of Use & Functionality

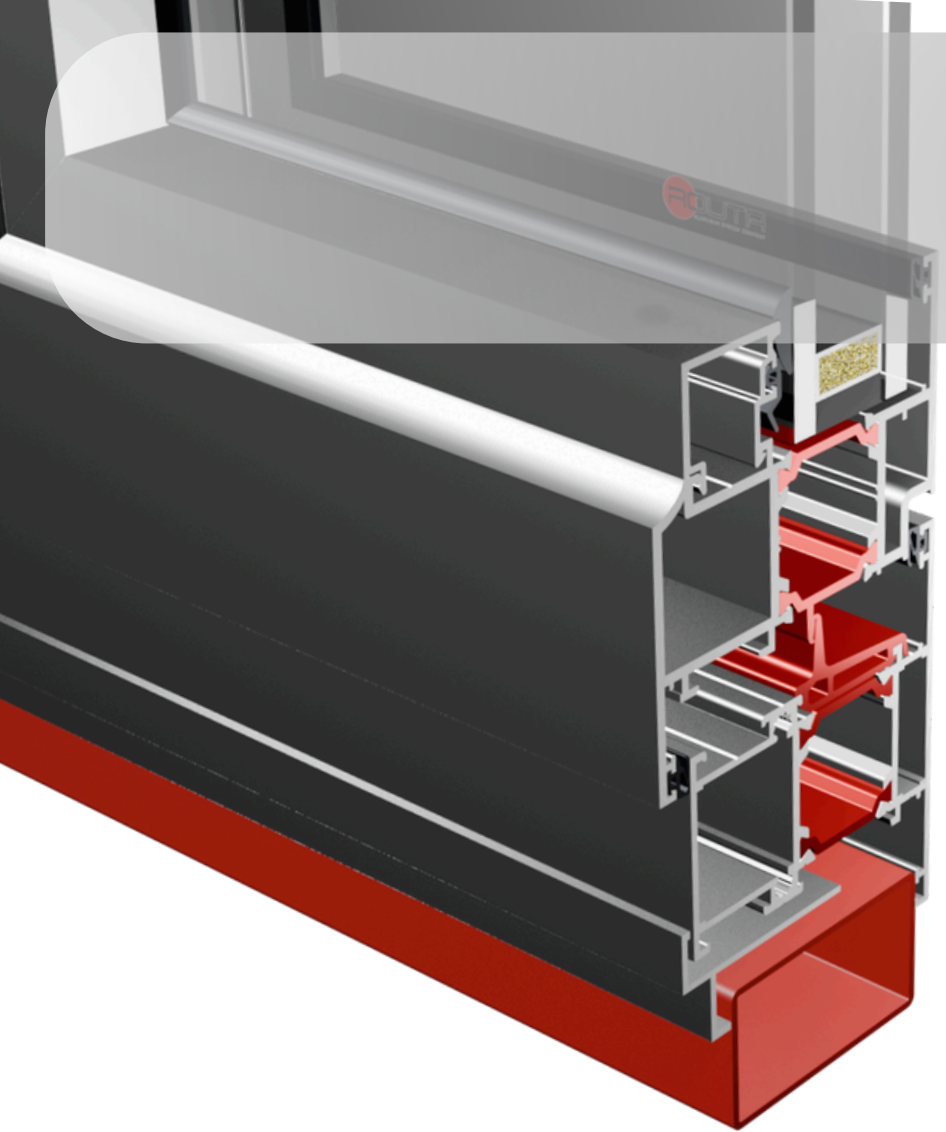
- Adjustable Lock Strike
- Triple Glazed Option with Integrated Blind
- Thermal & Acoustic Insulation
- Insect Screen / Fly Screen
- Low Threshold Option
- Tilt & Turn System
- Hidden Sash / Concealed Sash



## Technical Specifications

- Frame Width: 55 mm
- Frame Height: 40 mm
- Sash Width: 610 mm
- Sash Height: 625 mm





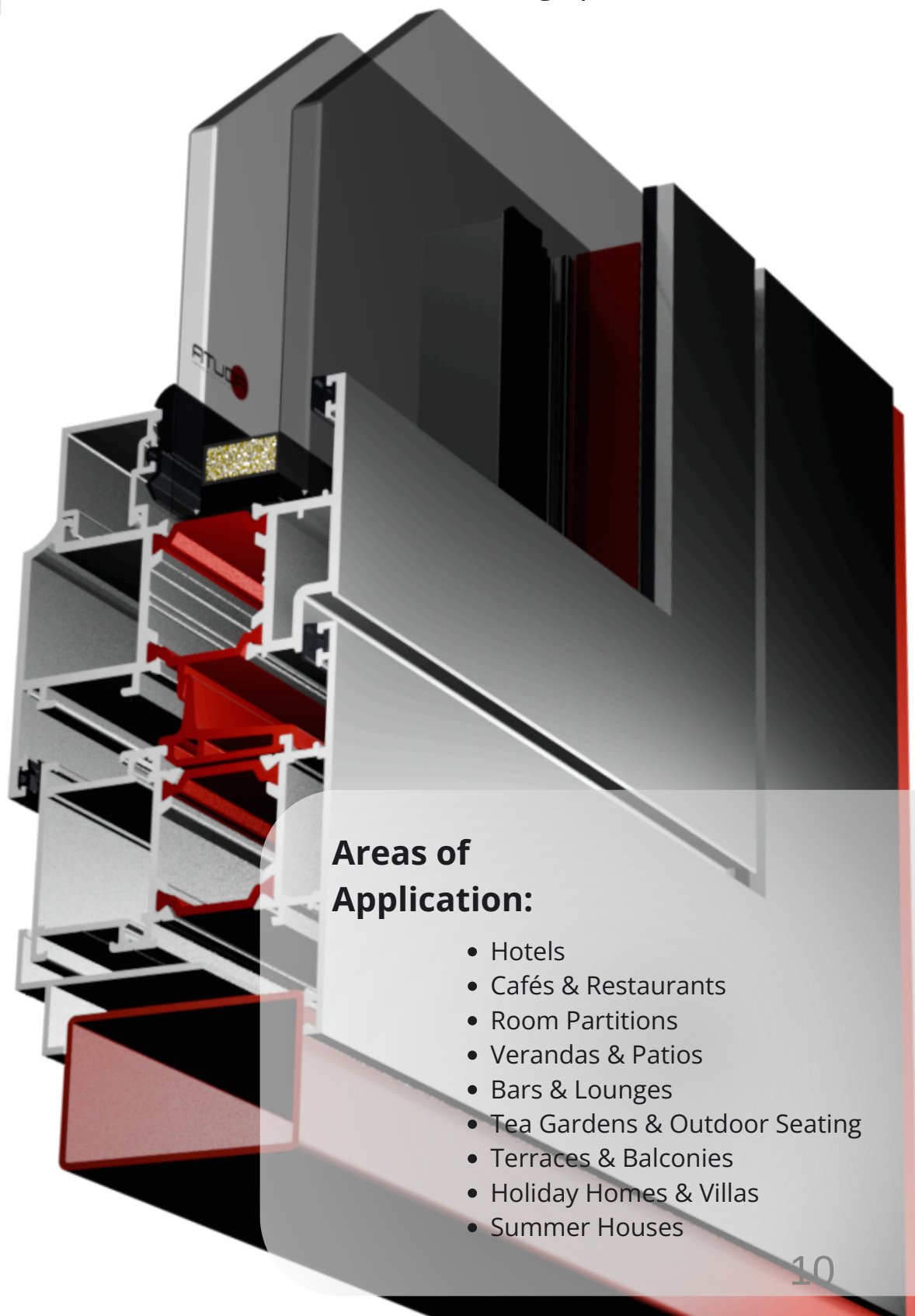
"The EWT65 series stands out as an upper mid-range glass enclosure solution for projects that require thermal and acoustic insulation close to the EWT75, but without the need for its extreme load-bearing capacity. It is the ideal choice for reducing costs without compromising on quality, offering a high-performance alternative for modern living spaces."

## Technical Specifications

- Energy Efficiency
- Adjustable Lock Strike
- Triple Glazed Option with Integrated Blinds
- High Thermal & Acoustic Insulation
- Insect Screen

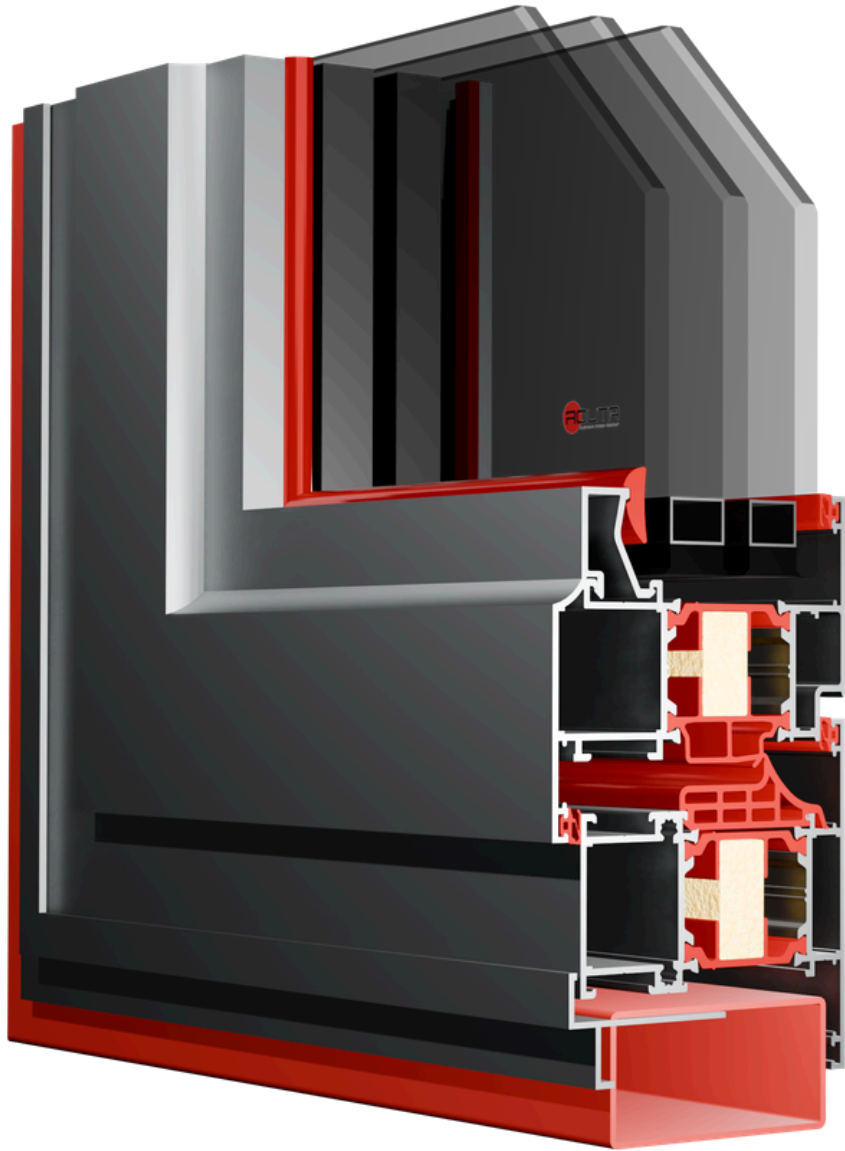
## Application Features

- Ease of Use & Functionality
- Double Glazing Application
- Triple Glazing Application
- Integrated Venetian Blind Application
- 3-Tier Gasket System
- Acoustic Insulation
- Single or Double Glazing Options
- Mountable on Steel Frames



## Areas of Application:

- Hotels
- Cafés & Restaurants
- Room Partitions
- Verandas & Patios
- Bars & Lounges
- Tea Gardens & Outdoor Seating
- Terraces & Balconies
- Holiday Homes & Villas
- Summer Houses



**EWT75: Minimum Heat Loss with Integrated Insulation Foam**  
Our aluminium profiles significantly reduce thermal conductivity thanks to the high-performance insulation foam integrated directly into the frame. This helps maintain indoor temperatures at comfortable levels and maximises energy efficiency.

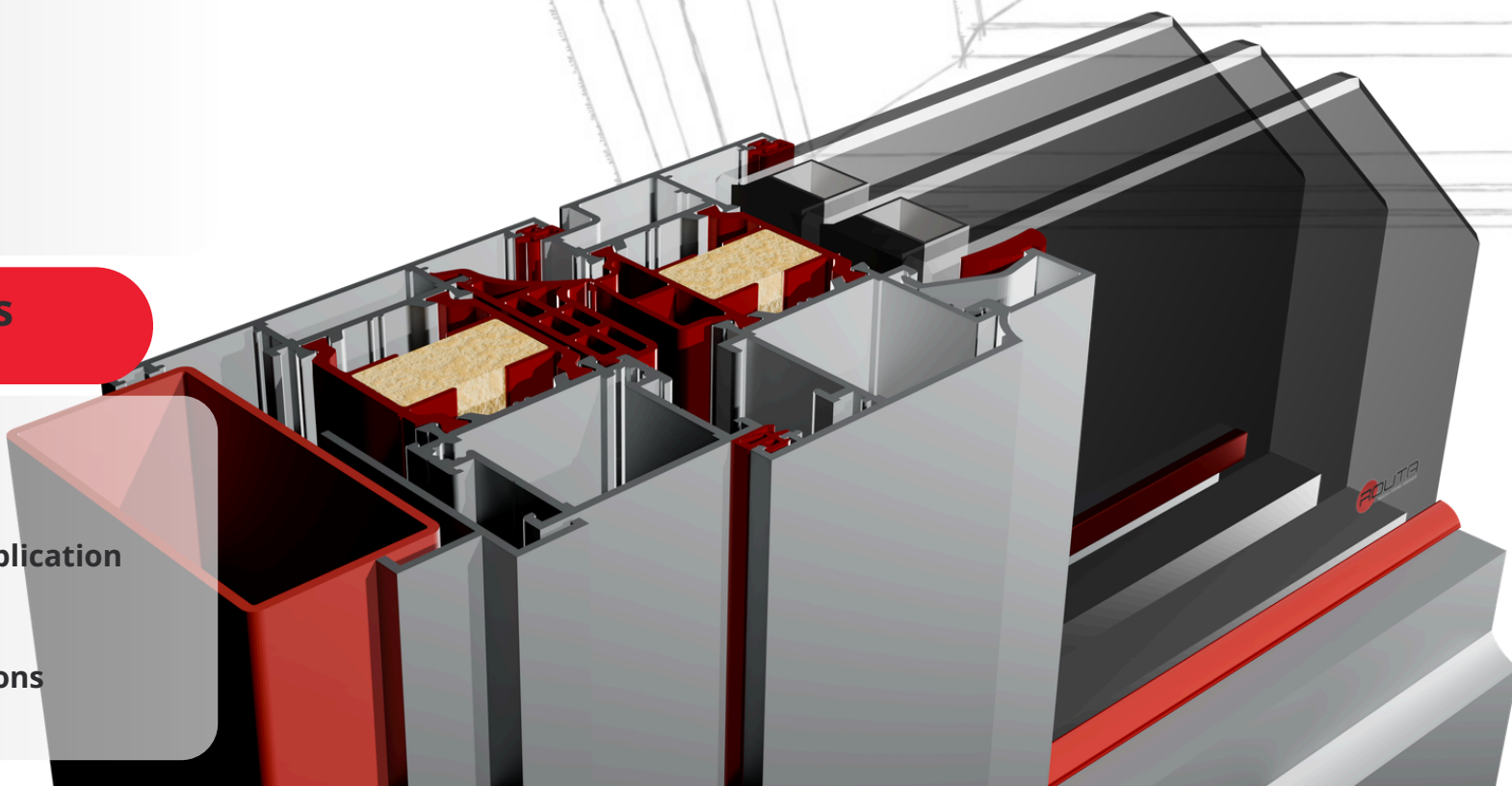
**Enhanced Sealing Performance with Adjustable Lock Strikes**  
Precision-engineered adjustable lock strikes ensure perfect alignment and superior sealing. This results in high-level air tightness, water resistance, and acoustic insulation, providing both comfort and long-lasting durability for modern living spaces.

## Technical Specifications

- Frame Width: 75 mm
- Frame Height: 40 mm
- Sash Width: 610 mm
- Sash Height: 805 mm

## Application Features

- Ease of Use & Functionality
- Double Glazing Application
- Triple Glazing Application
- Integrated Venetian Blind Application
- 3-Tier Gasket System
- Acoustic Insulation
- Single or Double Glazing Options
- Mountable on Steel Frames





**EMİN ALÜMİNYUM**

Aluminum - Glass - Automation Systems - Wholesale Marketing



**"Flawless Production with High-Tech  
CNC Machining Centres"**





## Bioclimatic Pergola

A bioclimatic pergola is a modern outdoor architectural system designed to provide comfort and climate control in open spaces. It features adjustable aluminum louvers that can rotate or retract to regulate sunlight, airflow, and shade. By adjusting the angle of the louvers, users can create natural ventilation, reduce heat, or allow sunlight into the space. When the louvers are fully closed, they form a waterproof roof that protects the area from rain while directing water into an integrated drainage system.

Bioclimatic pergolas are widely used to enhance outdoor living spaces in both residential and commercial environments, such as terraces, gardens, restaurants, cafés, hotels, and pool areas. They transform outdoor spaces into comfortable areas that can be used throughout the year.

