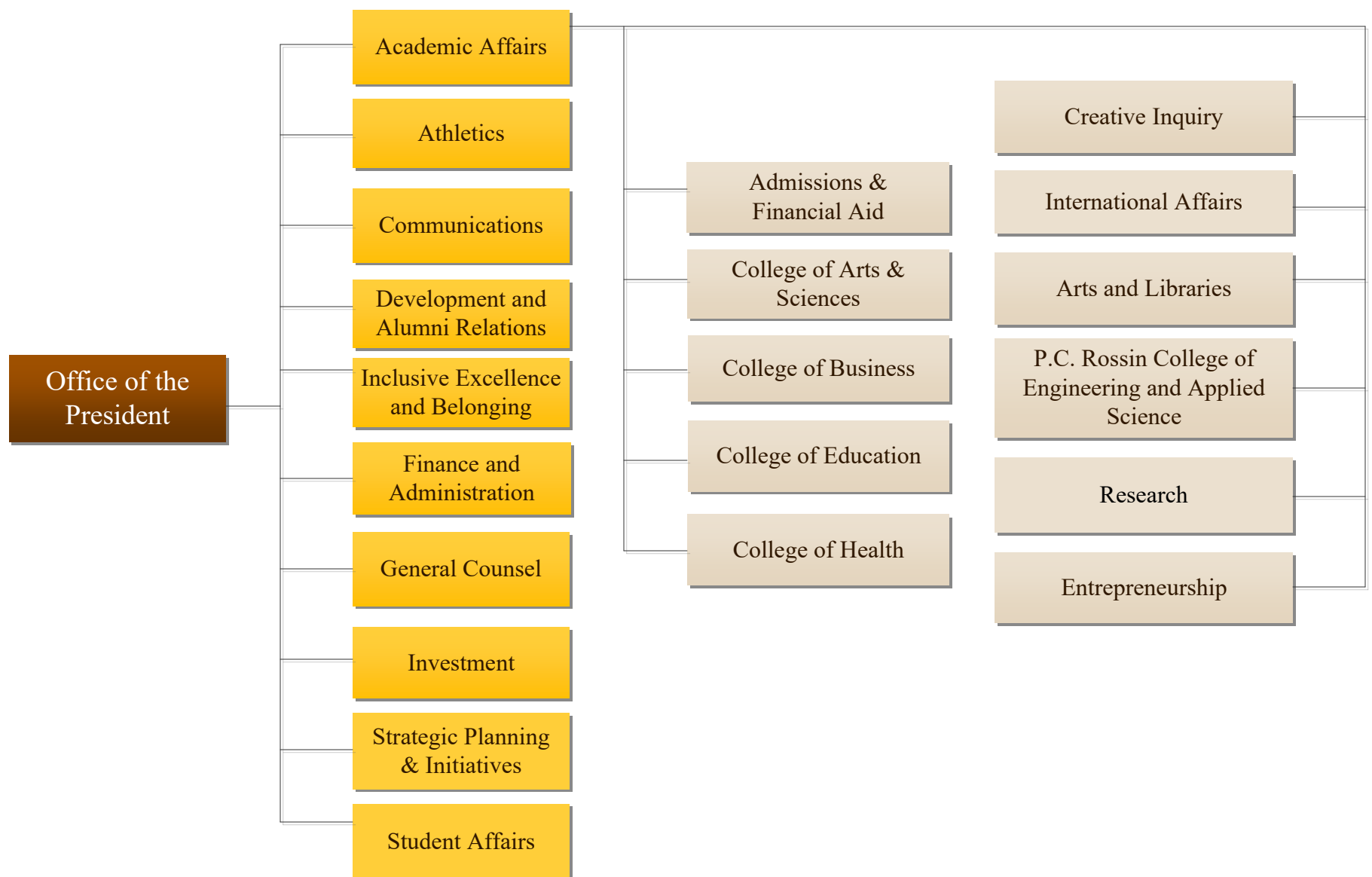
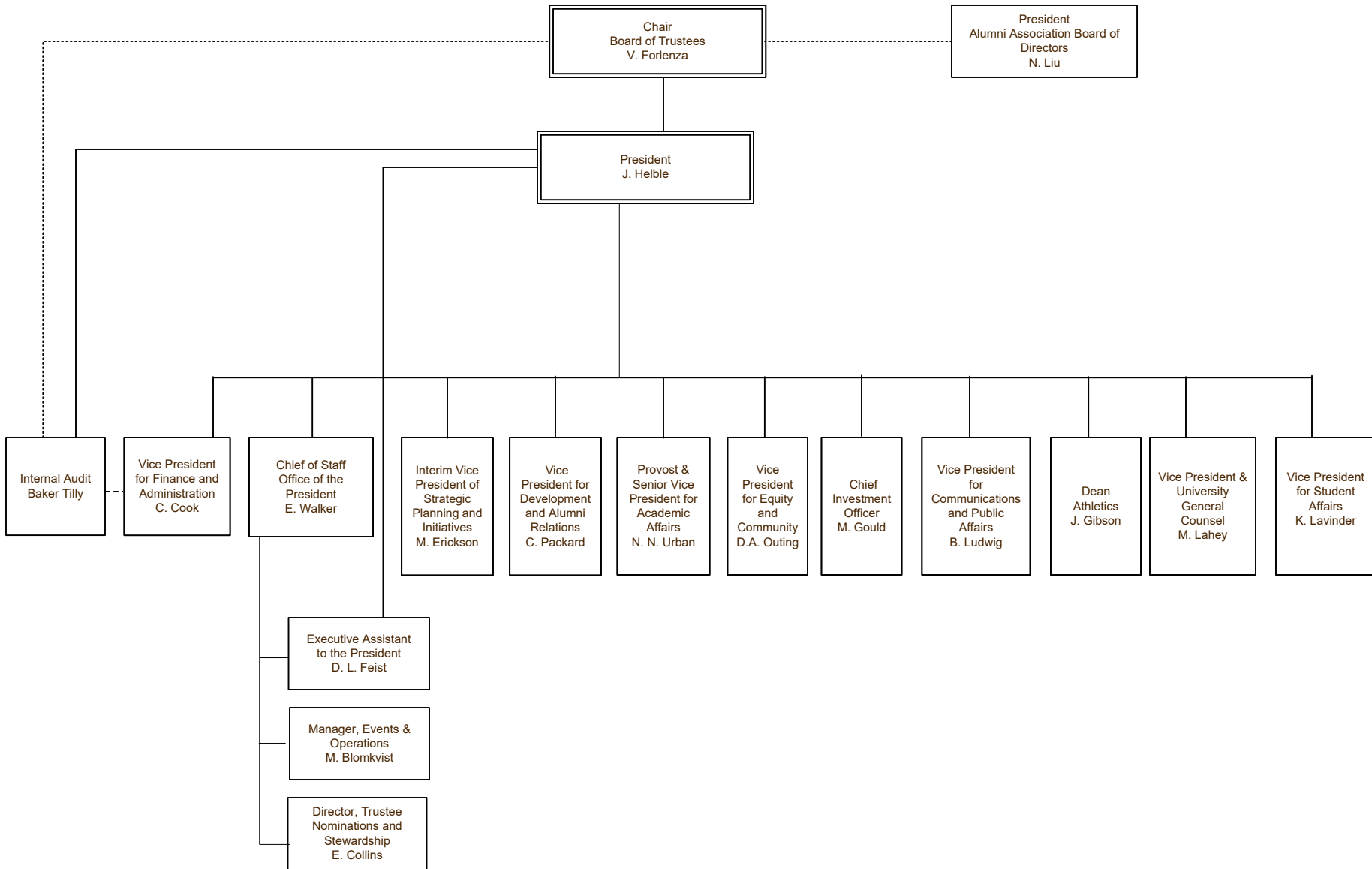


Lehigh University Organization Chart





..... Indicates dual reporting line

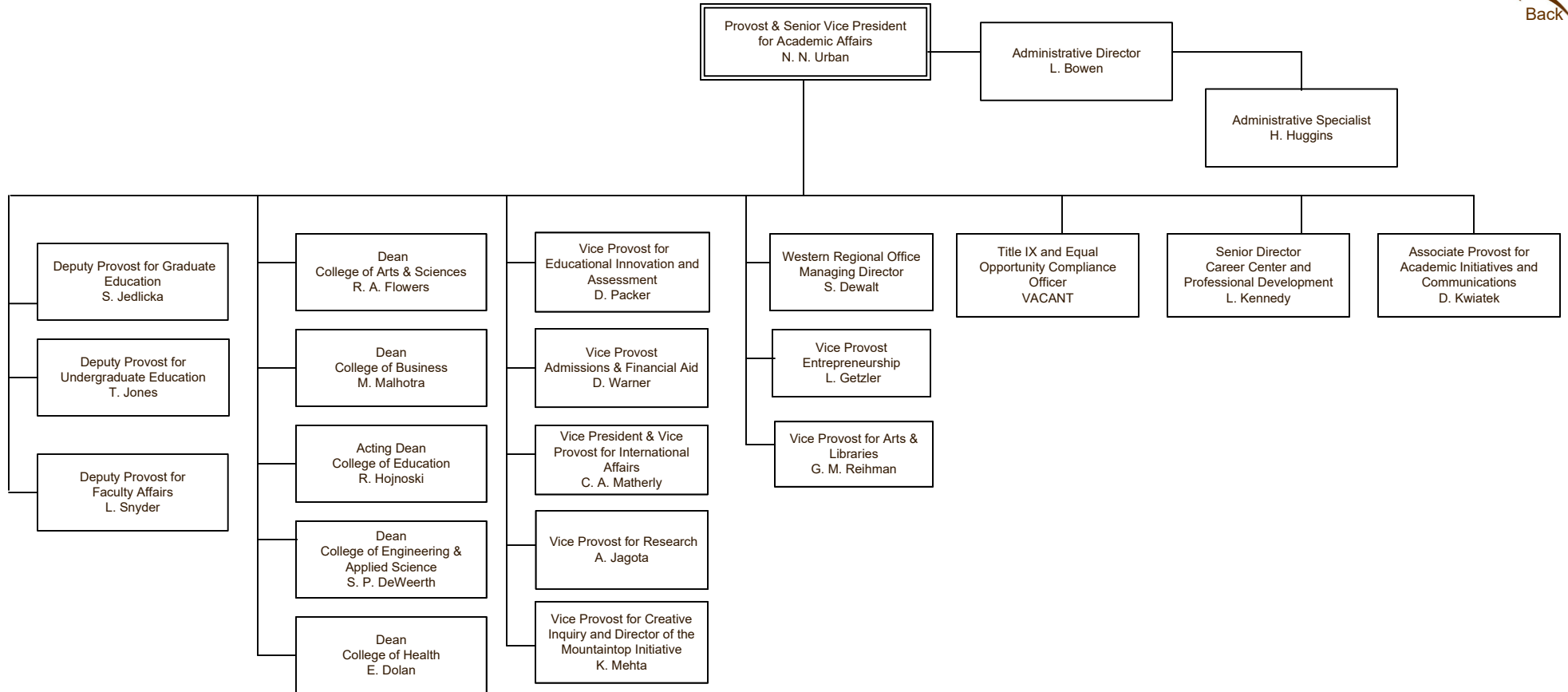
———— Indicates direct report



Organization Chart

Provost & Senior VP of Academic Affairs

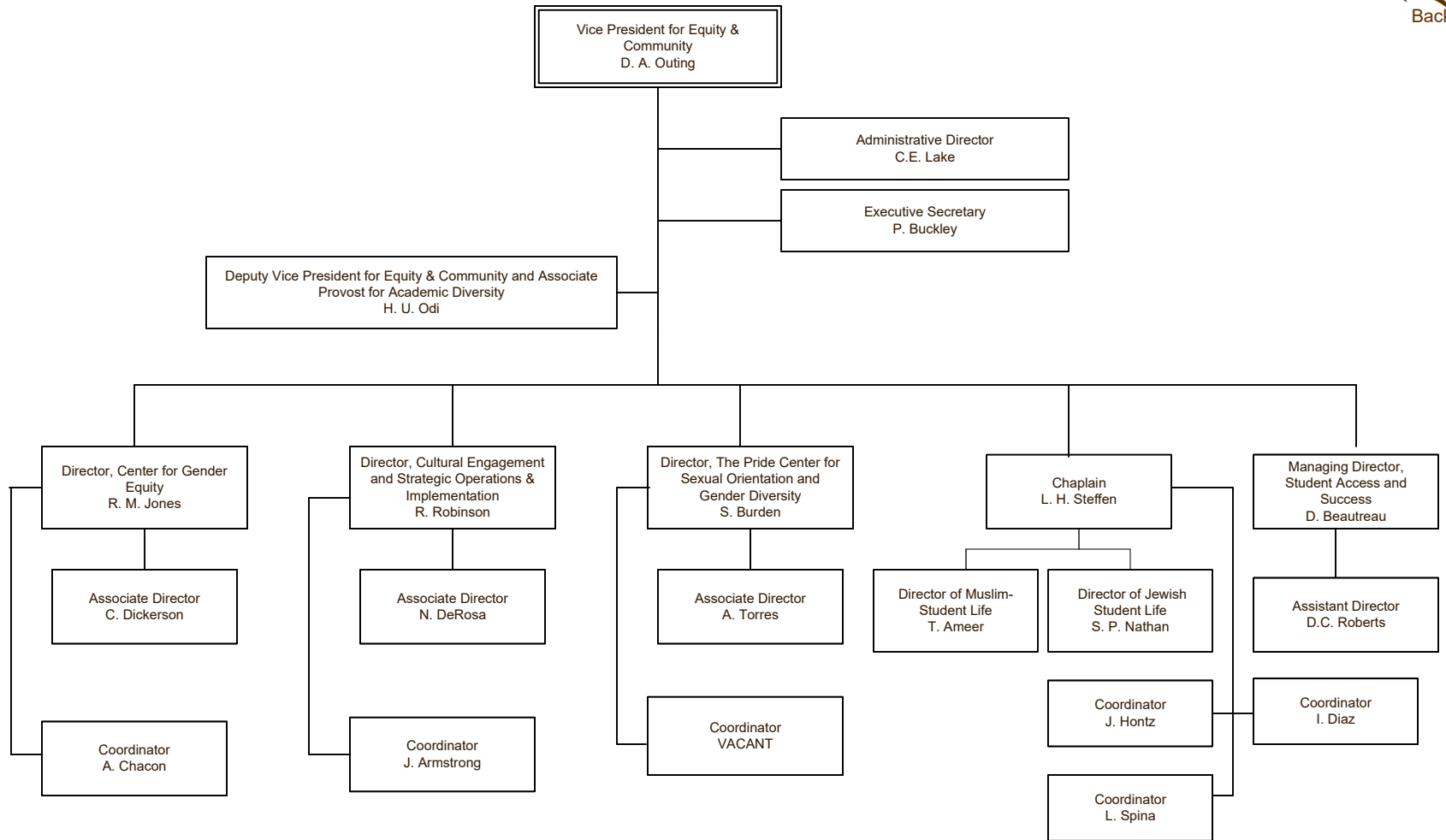
Last Update:
April 2, 2026



..... Indicates dual reporting line

———— Indicates direct report

Office of Inclusive Excellence and Belonging

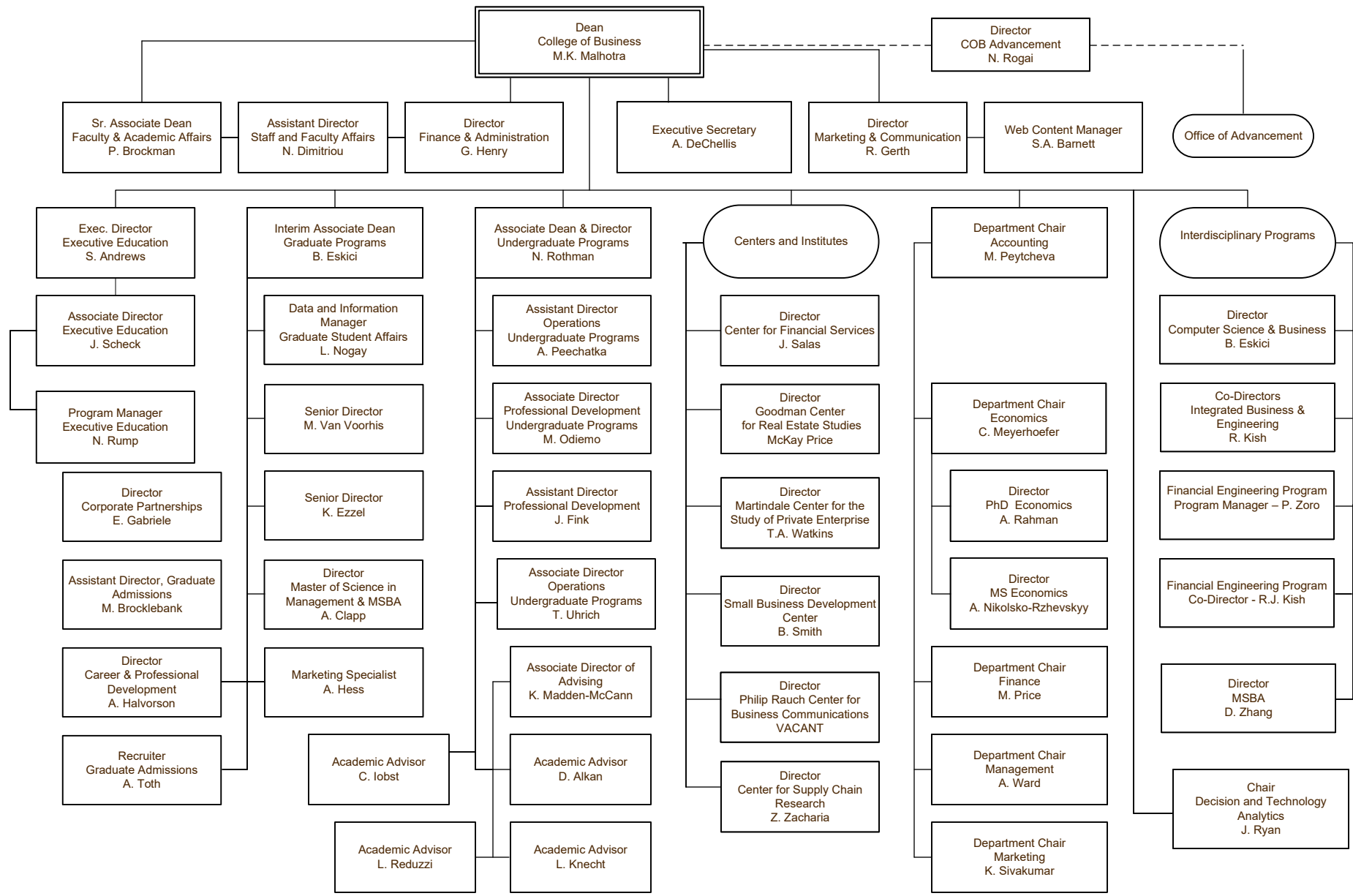


..... Indicates dual reporting line

———— Indicates direct report

Organization Chart

College of Business



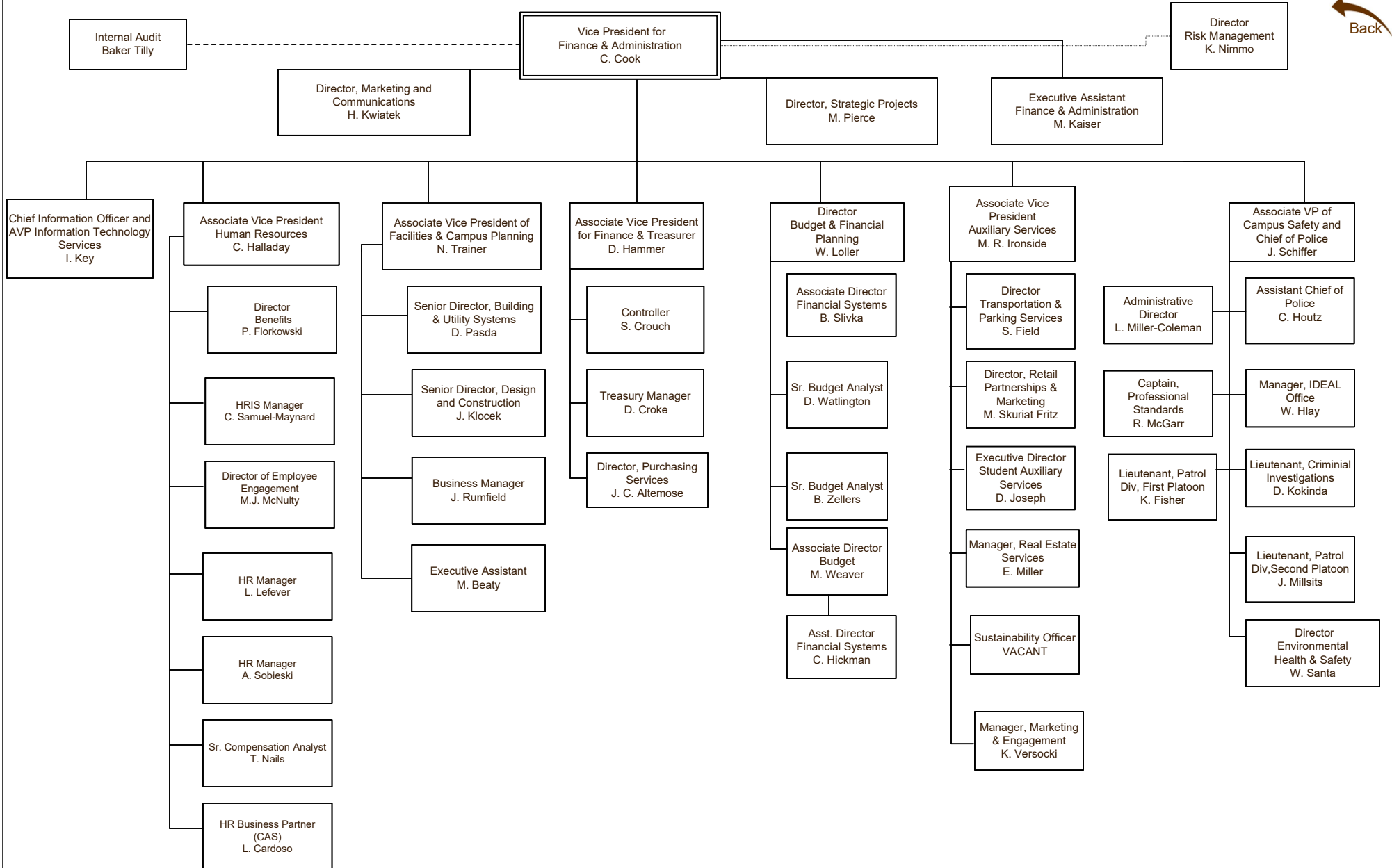
..... Indicates dual reporting line
 _____ Indicates direct report



Organization Chart

Finance & Administration

Last Update:
June 1, 2026



----- Indicates dual reporting line with another stem
 _____ Indicates direct report



Organization Chart

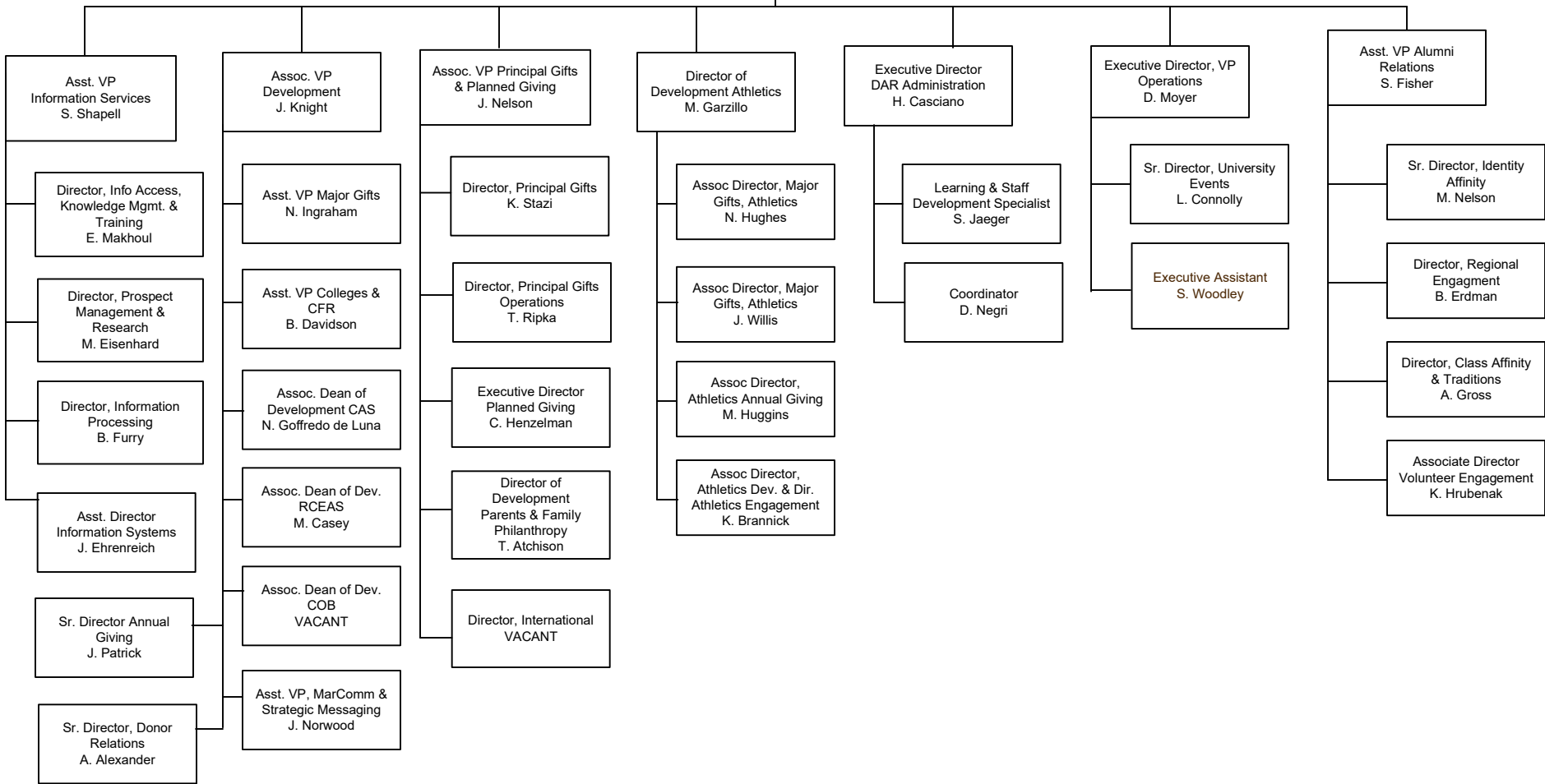
Development and Alumni Relations

Last Update:
May 29, 2026



Vice President
Development and Alumni Relations
C. Packard

Executive Assistant
S. Woodley



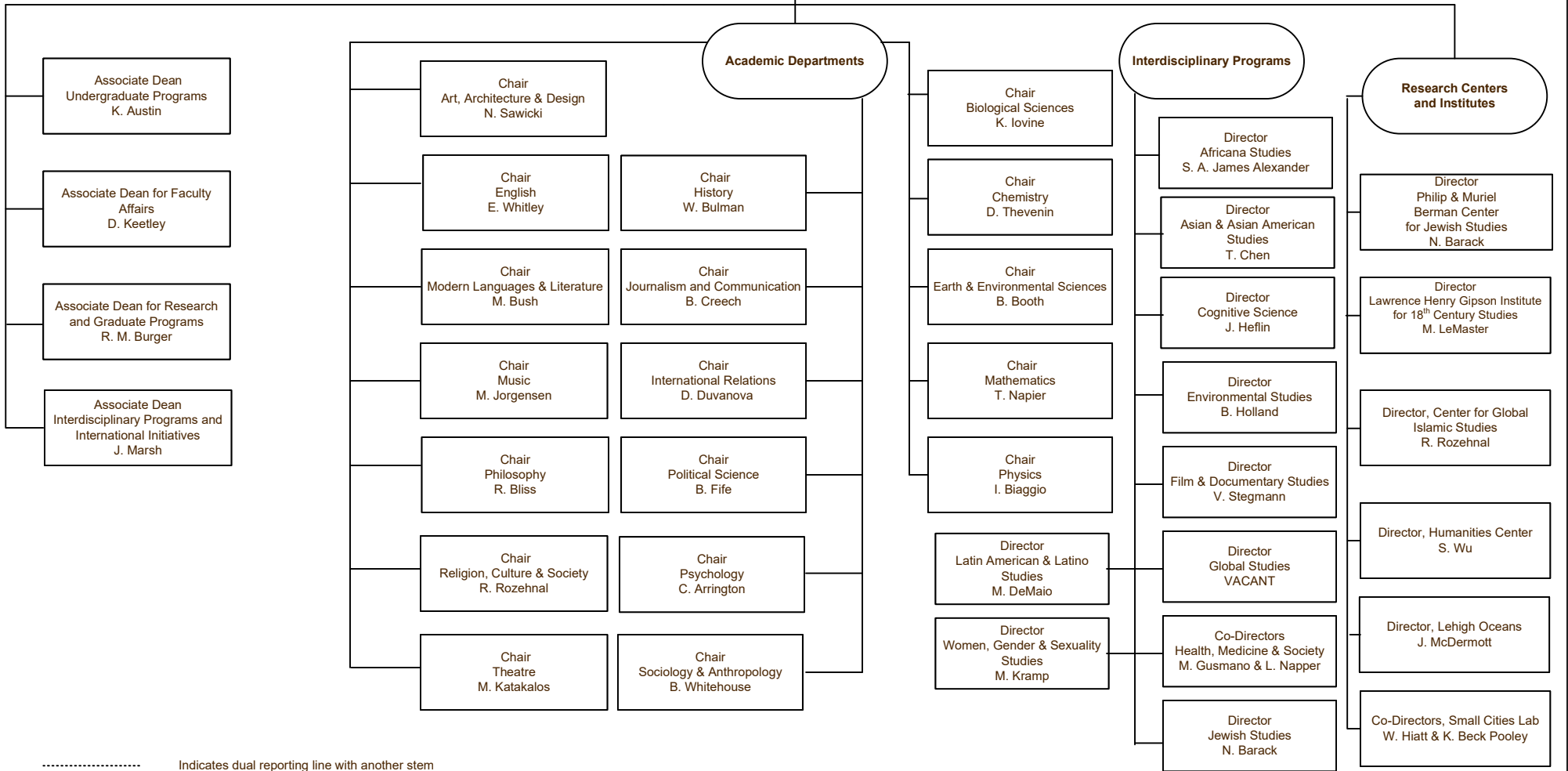
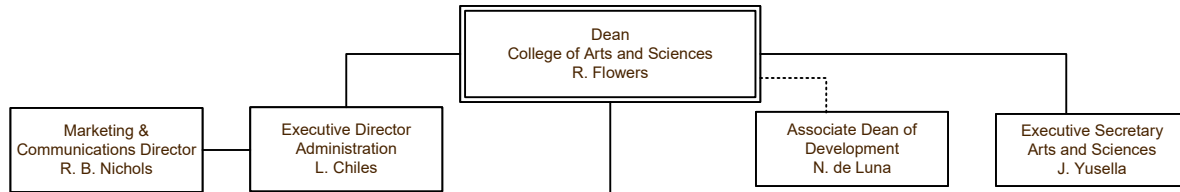
— Indicates direct report



Organization Chart

College of Arts & Sciences

Last Update:
June 1, 2026



..... Indicates dual reporting line with another stem
 ——— Indicates direct report



Organization Chart

Last Update:
June 1, 2026

College of Education



Interim Dean
College of Education
R. Hojnoski

Director of Corporate and
Foundation Relations
VACANT

Director of Development
L. Corcoran

Executive Secretary
C. Kologie

Business Manager
Z. Polzer

Associate Dean
For Research
B. Dever

Chair
Education and Human Services
P. Manz

Director
Centennial School
J. Fogt

Associate Dean for Graduate
Studies
L. B. Sawyer

Director
Center for Promoting Research
to Practice
L. Kern

Manager
Marketing & Communications
B. Blew

Senior Research Program
Development Officer
G. M. Sierzega

Associate Chair of Faculty
G. Caskie

Program Director
Counseling Psychology
S. Woodhouse

Program Director
Educational Leadership
C. Hochbein

Program Director
School Psychology
E. Van Norman

Program Director
Special Education
S. Kangas

Program Director
Teaching, Learning, and
Technology
T. Hammond

Director, Program
Development
J. Kardos

Associate Director
Enrollment Manager
S. Weber

Assistant Director
Global Programs
J. Aughenbaugh

----- Indicates dual reporting line
_____ Indicates direct report

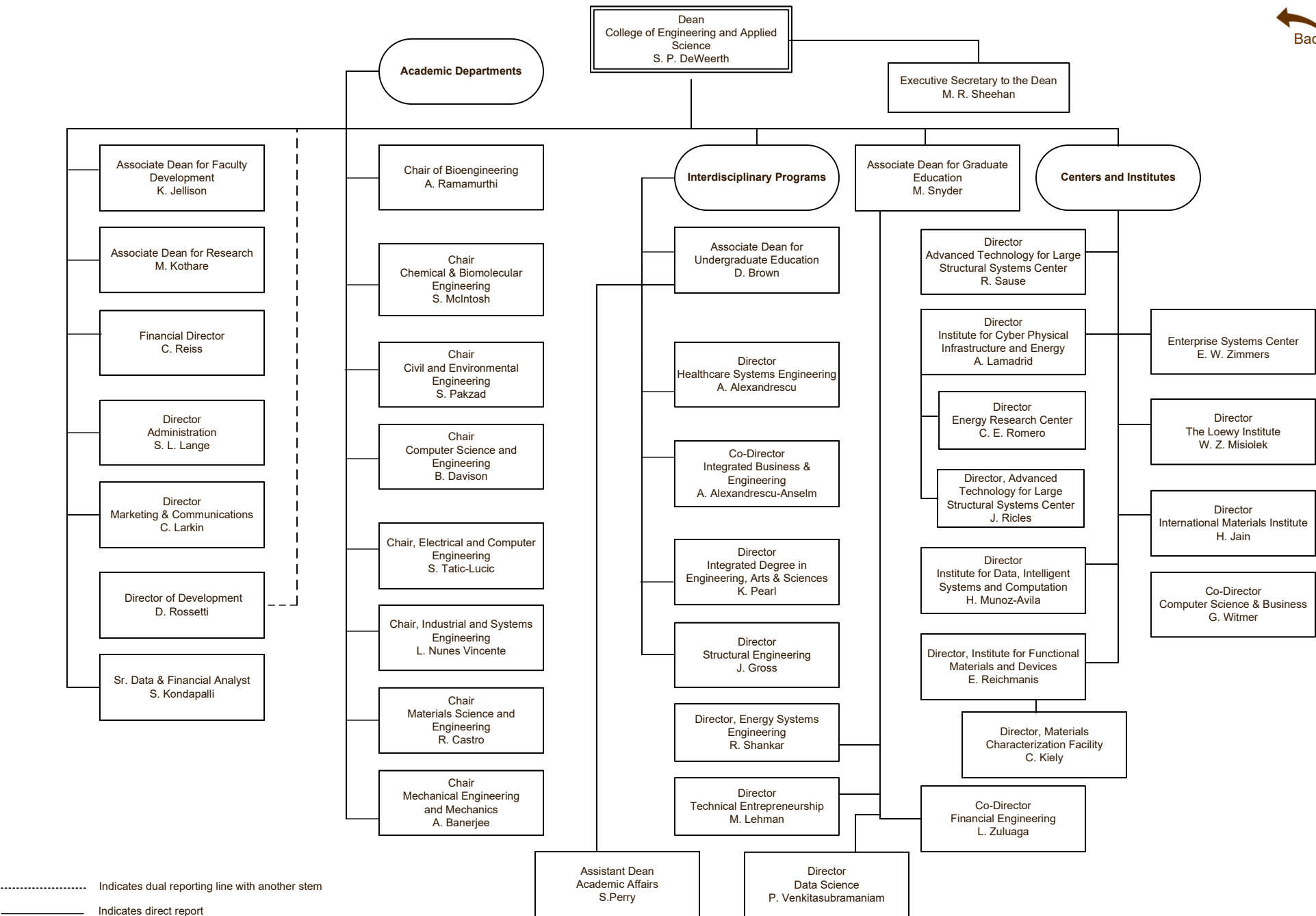


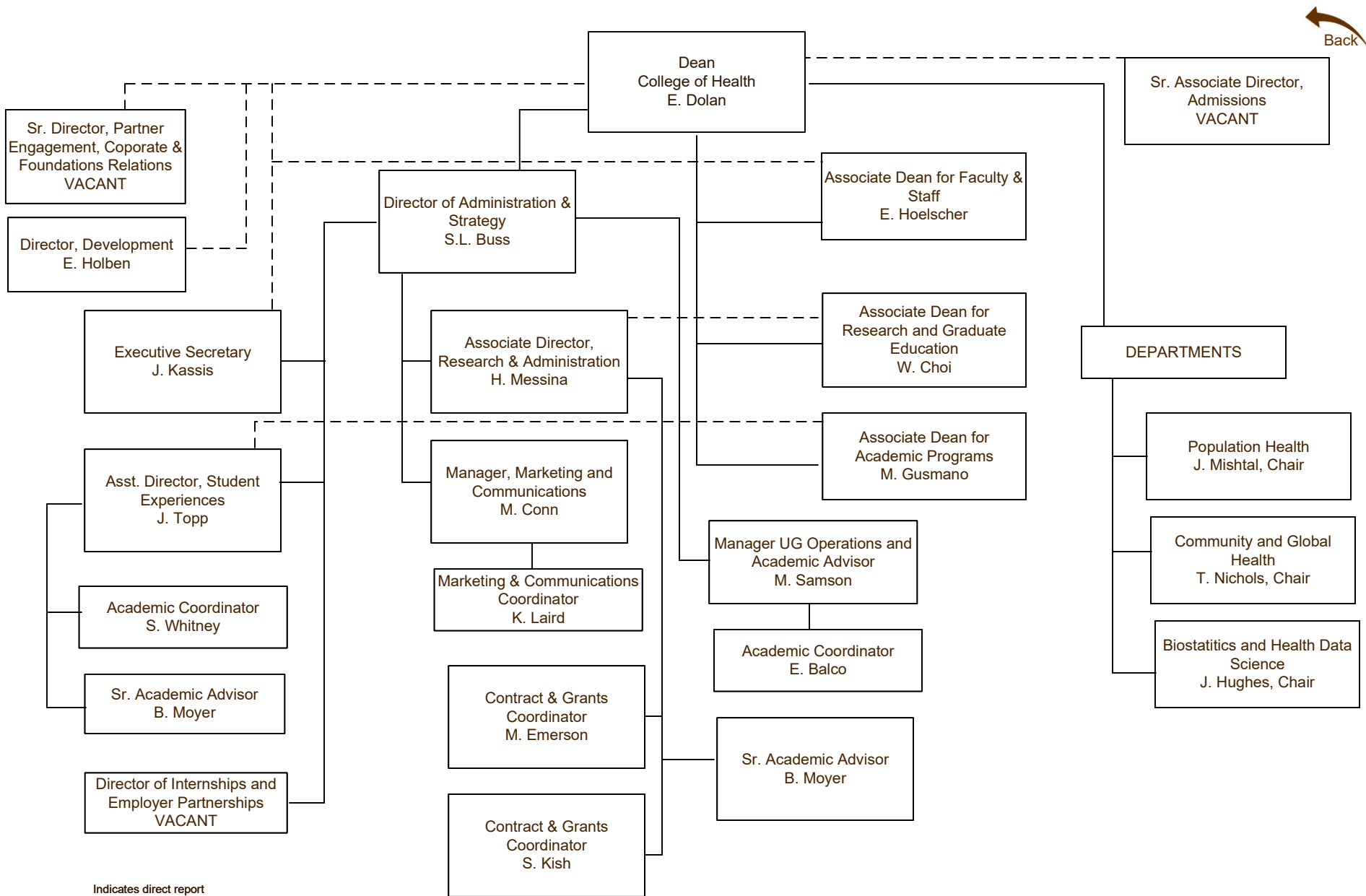
Organization Chart

Last Update:

June 1, 2026

P.C. Rossin College of Engineering & Applied Science





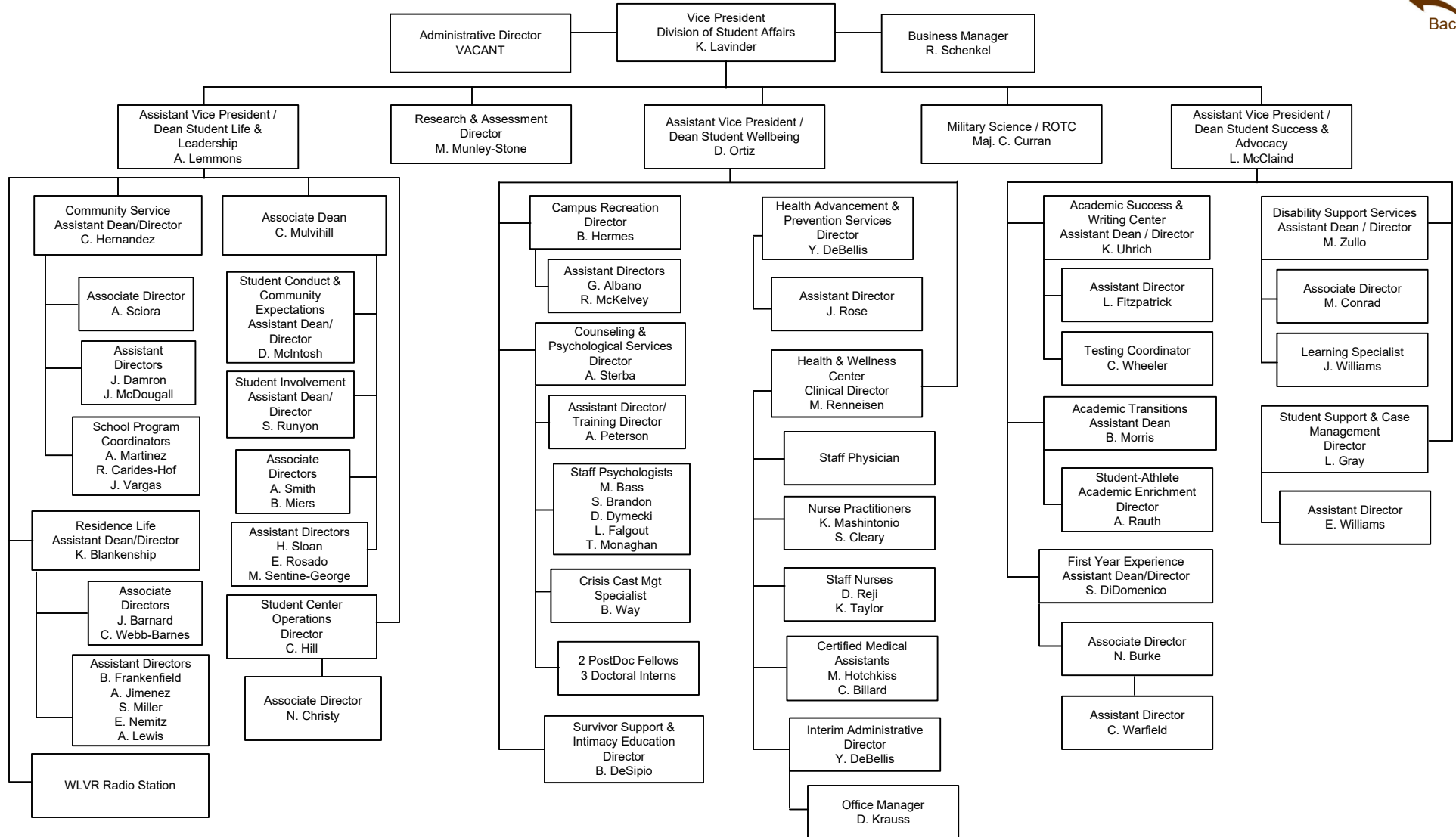
Indicates direct report



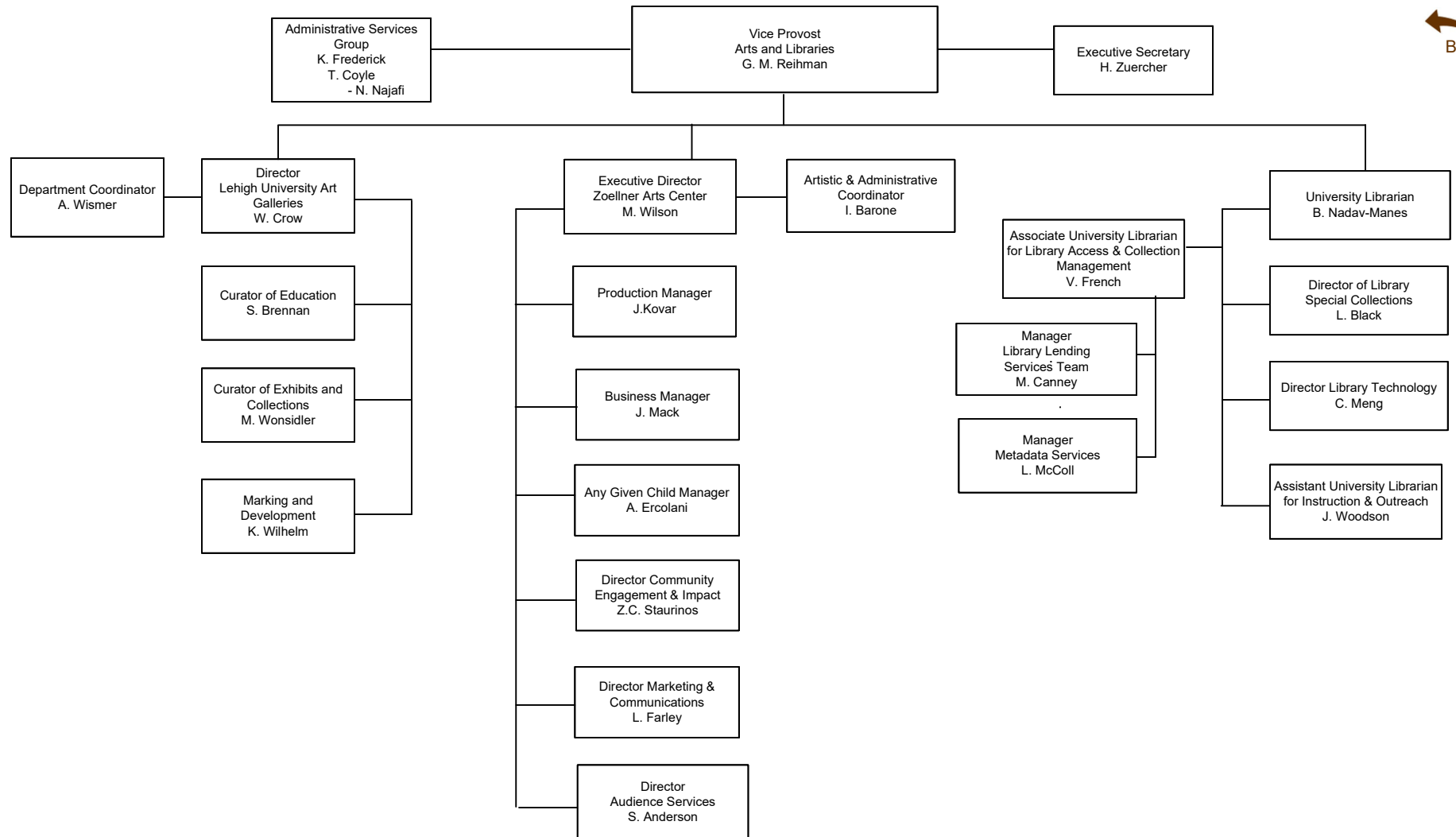
Organization Chart

Student Affairs

Last Update:
May 29, 2026



Indicates direct report



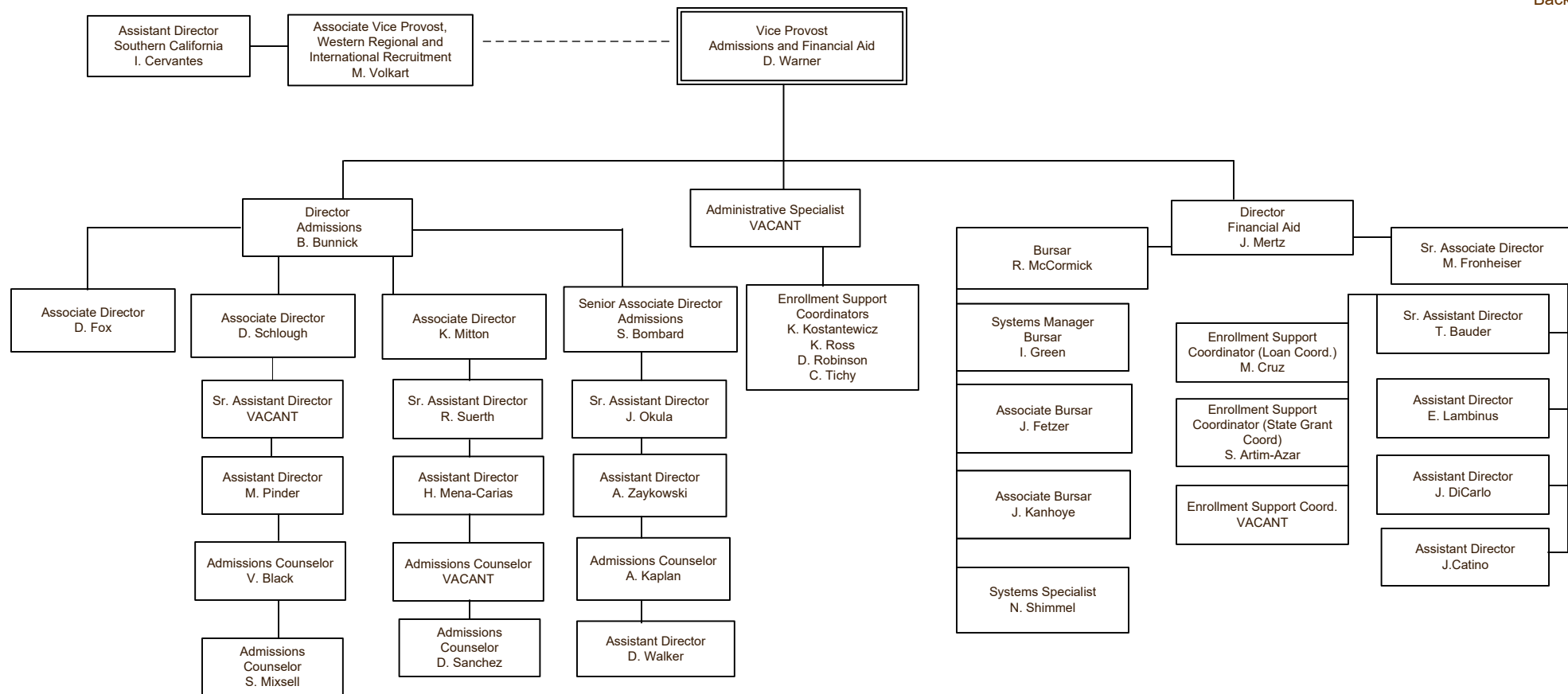
————— Indicates direct report
 - - - - - Indicates dual reporting line



Organization Chart

Admissions & Financial Aid

Last Update:
June 11, 2026



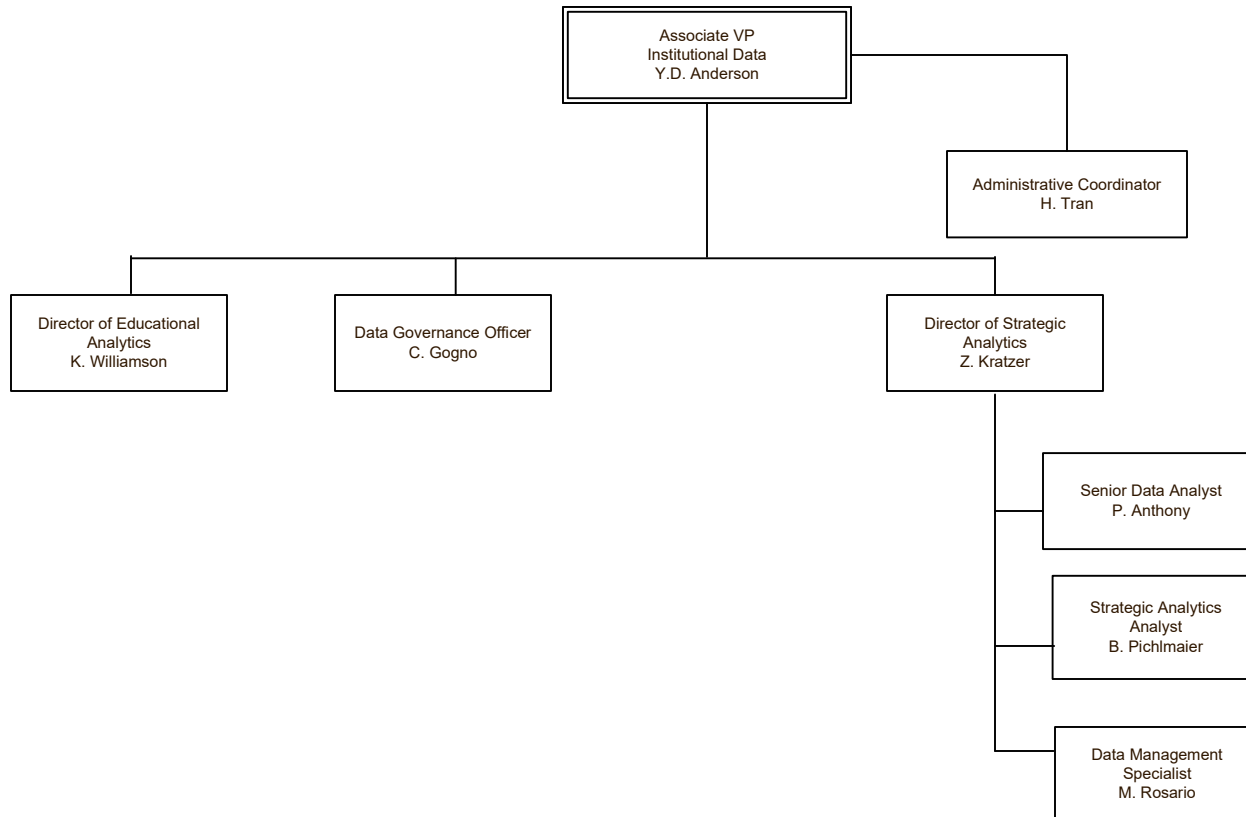
————— Indicates direct report



Organization Chart

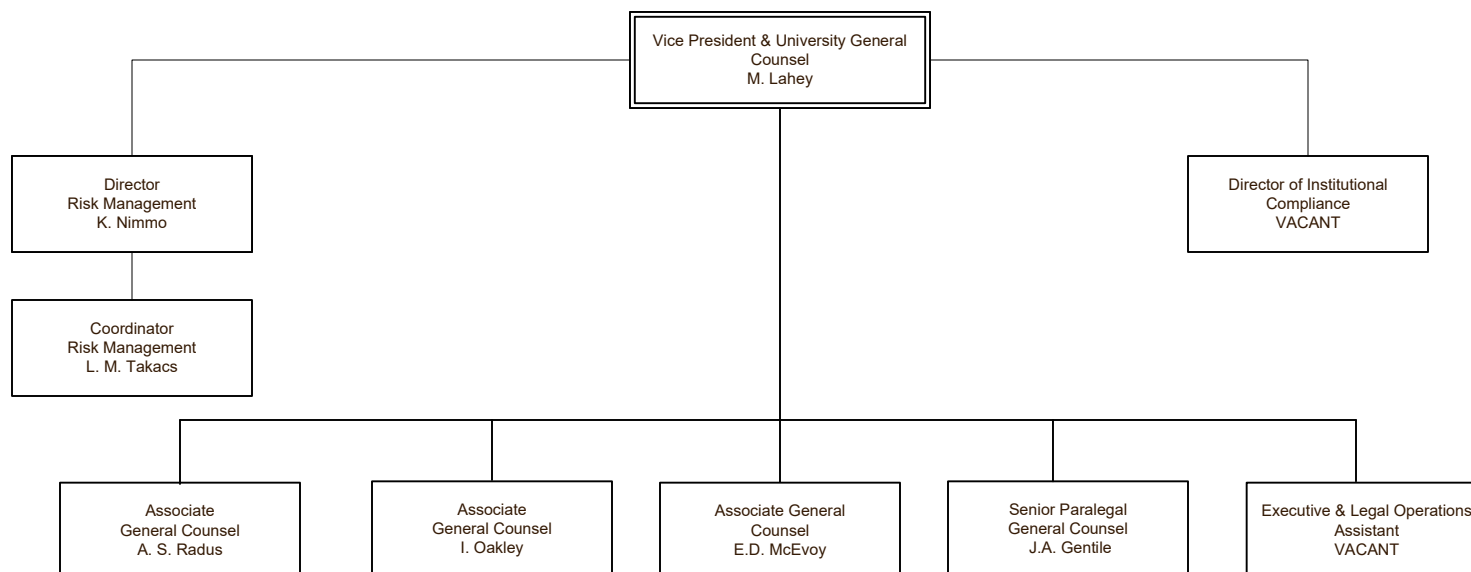
Office of Institutional Data

Last Update:
May 19, 2026



————— Indicates direct report

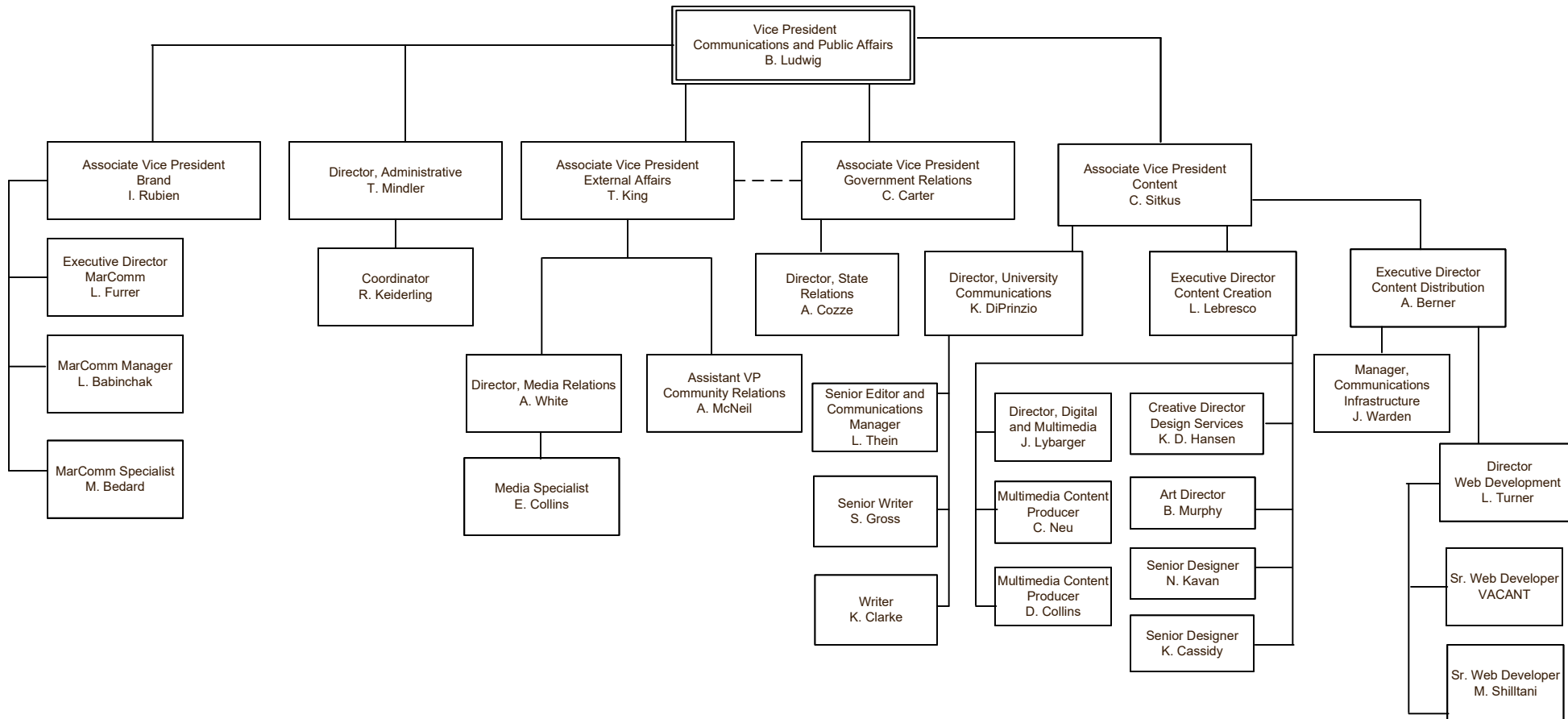
General Counsel

 Back

————— Indicates direct report

Organization Chart

Communications and Public Affairs



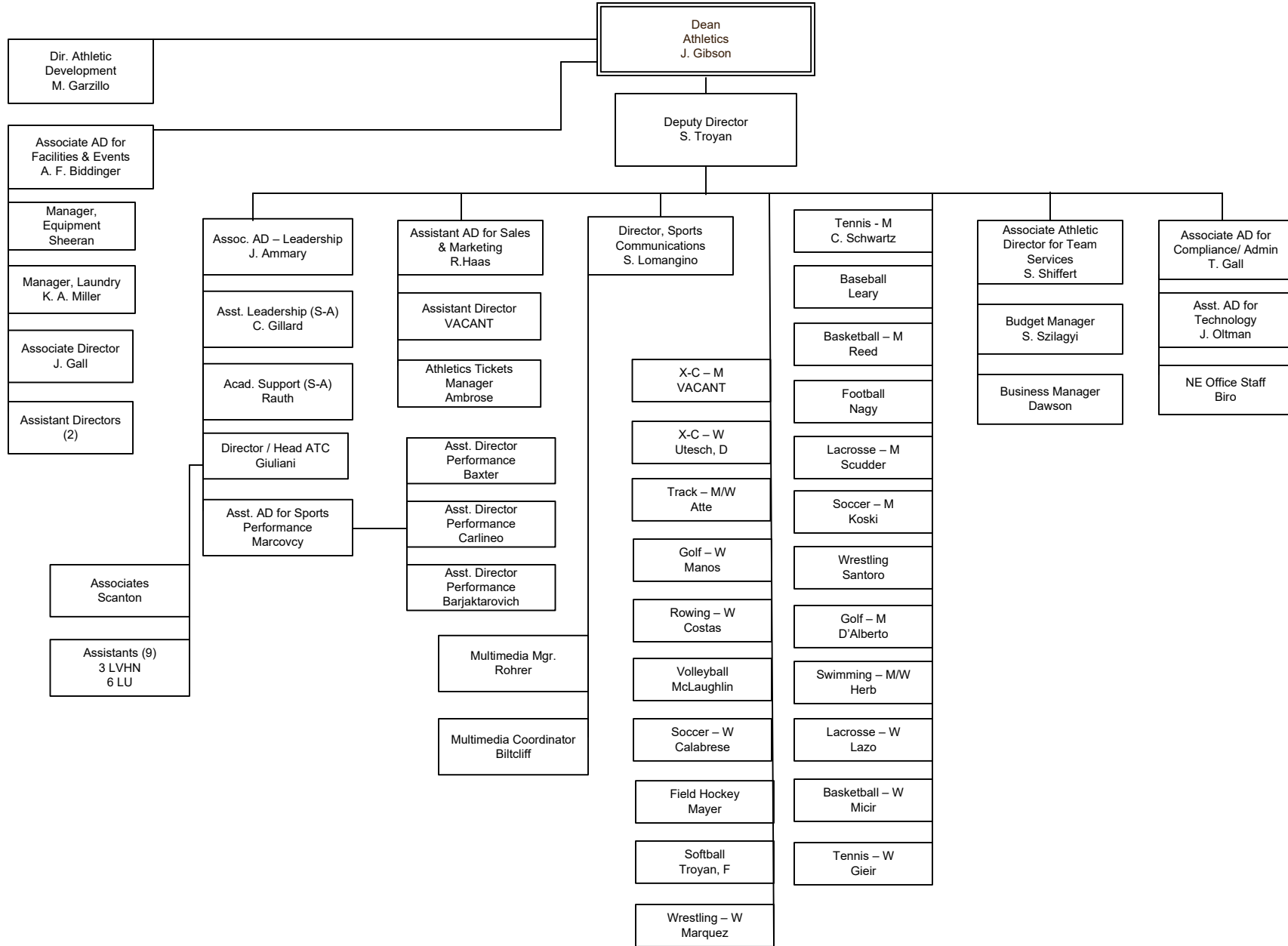


Organization Chart

Last Update:

June 2, 2026

Athletics



..... Indicates dual reporting line with another stem
 ————— Indicates direct report

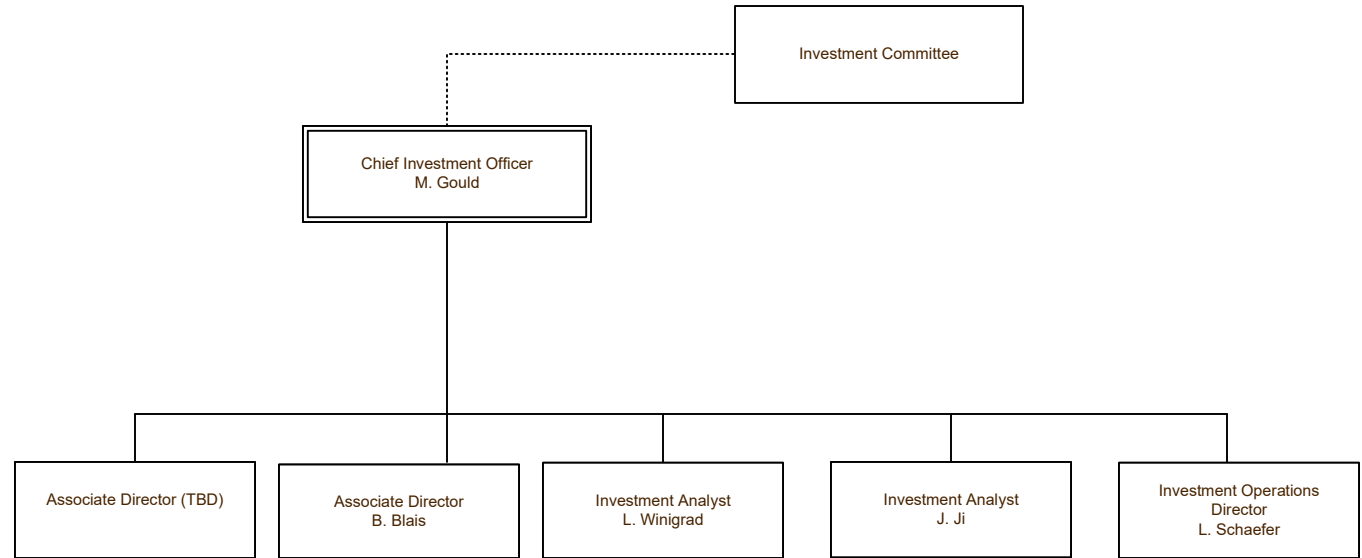


Organization Chart

Last Update:
May 18, 2026

Investment Office

Back



..... Indicates dual reporting line with another stem

———— Indicates direct report



Organization Chart

International Affairs

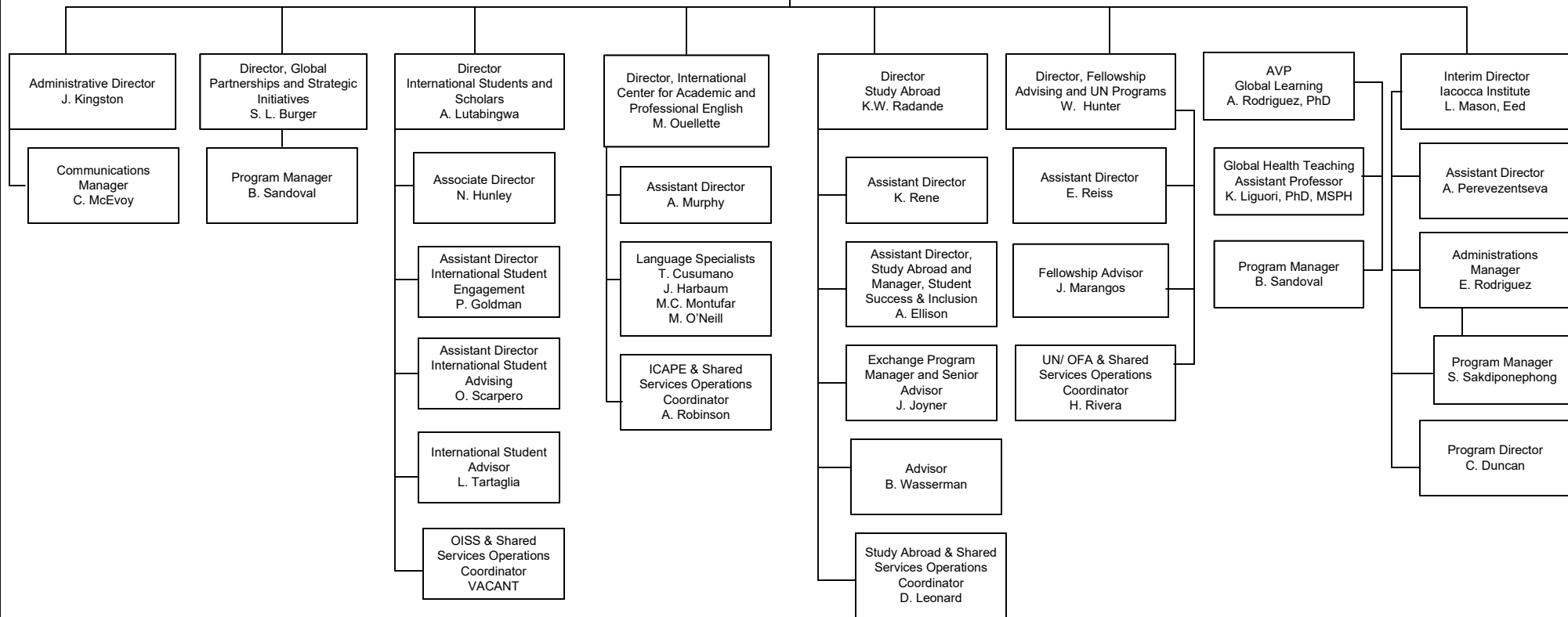
Last Update:

June 1, 2026



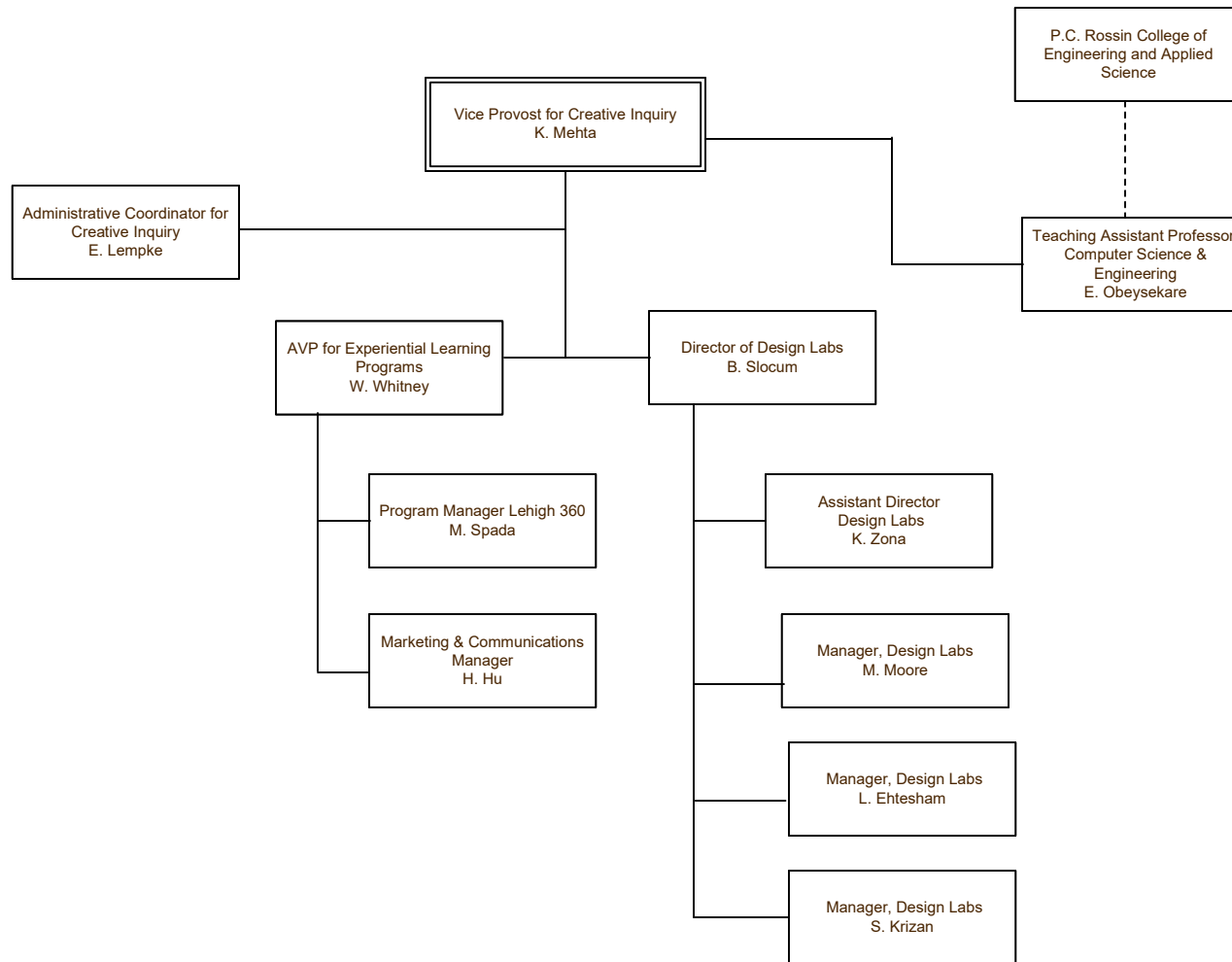
Division Coordinator for International Affairs
T. Kuklinski

Vice President & Vice Provost for International Affairs
C. Matherly



..... Indicates dual reporting line

———— Indicates direct report



..... Indicates dual reporting line with another stem

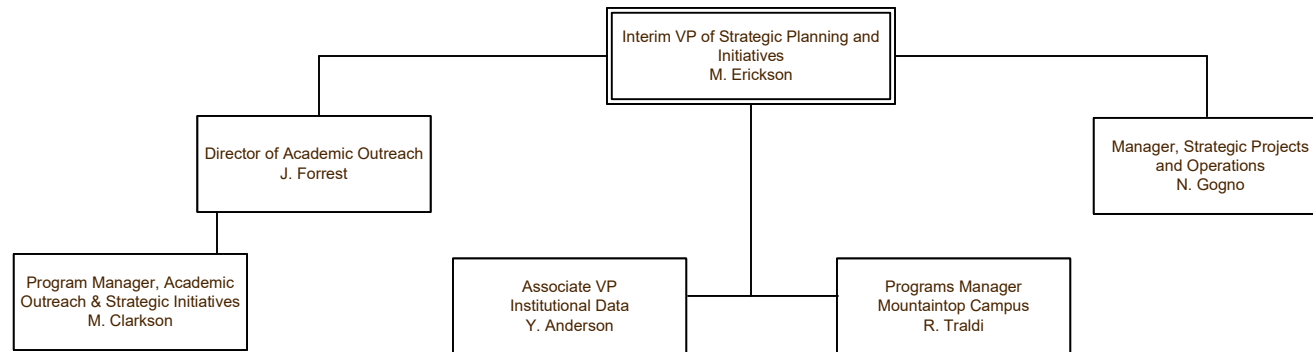
———— Indicates direct report



Organization Chart

Office of Strategic Planning & Initiatives

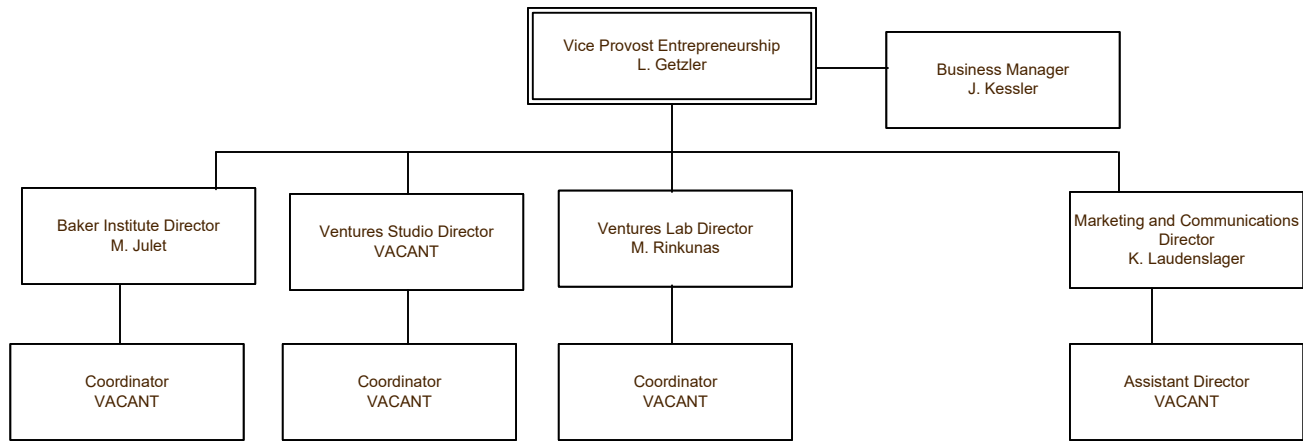
Last Update:
June 1, 2026



..... Indicates dual reporting line with another stem

———— Indicates direct report

Entrepreneurship



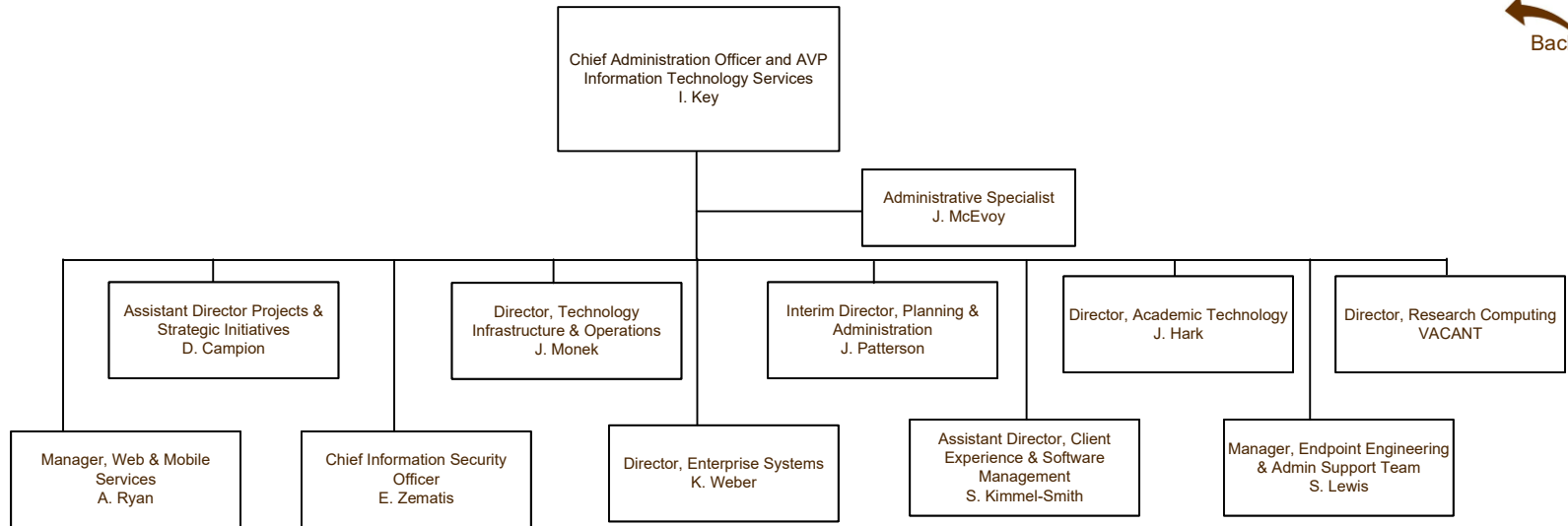
..... Indicates dual reporting line with another stem

———— Indicates direct report

Organization Chart

Information Technology Services

Last Update:
May 11, 2026



————— Indicates direct report