



Product Presentation

Rev. Sept 2025

BlueProbe

Bluetooth Probe Deflection Gauge

[View Product](#)

BlueProbe

BlueProbe is a compact, durable Bluetooth gauge delivering high-accuracy displacement and deflection measurements with a fast data rate. It features a powerful built-in BLE transmitter, providing precise wireless measurement for a range of industrial applications.

BlueProbe delivers more reliable data for demanding precision tasks. With its integrated BLE connectivity, BlueProbe streams measurements wirelessly to your smartphone, tablet or Windows PCs over distances of up to 300 ft. Multiple probes can operate simultaneously, enabling synchronized measurements at different locations, and the system can seamlessly integrate with other gauge types for advanced multi-sensor applications.

Along with streaming real-time readings, BlueProbe also logs data internally. Users can easily start data logging on the device and return later to retrieve all measurements stored in the onboard memory in a single batch. This feature is great for scenarios where it's inconvenient to keep a smart device or PC connected, or where wireless connectivity may be difficult to maintain during long data collection sessions.

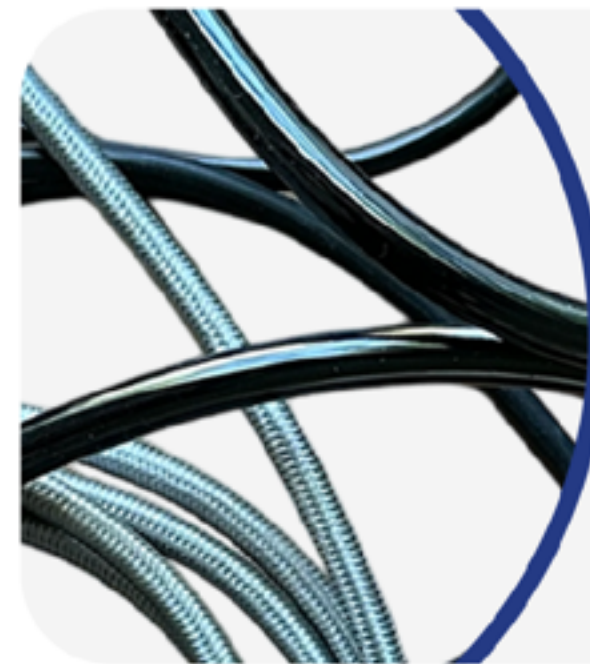
BlueProbe combines portability, precision, and flexibility, making it an ideal tool for engineers and technicians who require reliable, high-accuracy measurements in realtime without the need for messy cables.



 **Made in the USA**



↔
**HIGH-ACCURACY
PROBE**



COMPACT & COMPLETELY
WIRELESS



Bluetooth
Low Energy

Measure
DEFLECTION
and
DISPLACEMENT



**RESOLUTION
OPTIONS**



FAST DATA SAMPLING
Up to 66 Hz


**SINGLE & CONTINUOUS
RECORDING**

IP66
Dust/Water
Resistance

 **USB-C**

 **Onboard
DATA LOGGING**

BUILD YOUR OWN
CUSTOM KIT



Pairs with Adjustable
MAGBASE



Simultaneous
**MULTIPLE
CONNECTIONS**

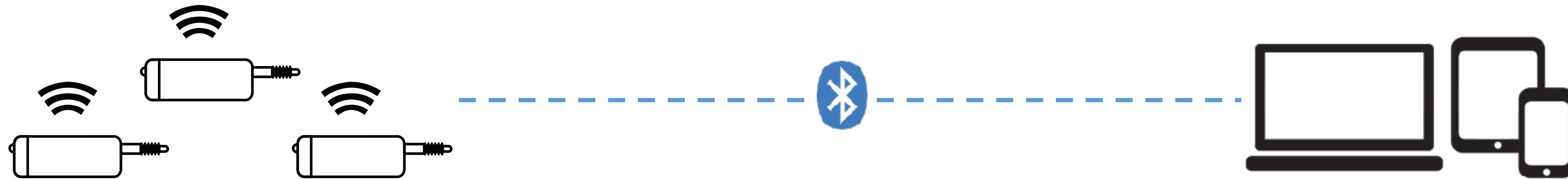
UP TO 10 HRS
Battery Life



Photos



How It Works



MultiGage iOS/Android

See live readings of all gauges, capture in single and continuous modes, save, view, plot, export CSV, and more.

MultiGage Windows*

Option 1: Direct Mode *(using MultiGage software)*

See live readings of all gauges, customize dashboard, capture in single and continuous modes, save, view, plot, export CSV and more.

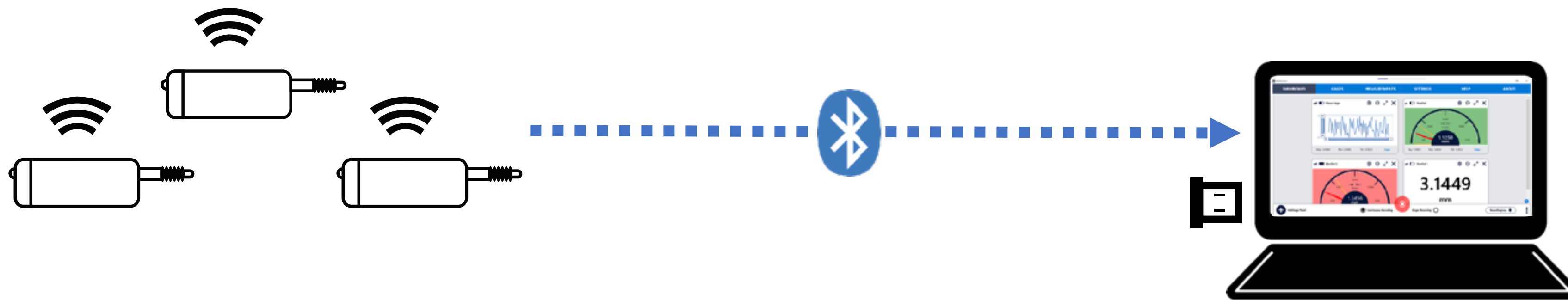
Option 2: Keyboard Entry Mode *(MultiGage software running in the background)*

With MultiGage running in the background, captured data (single/continuous) is entered into another software (such as Excel, text editors, or any SPC software) as keyboard entry.

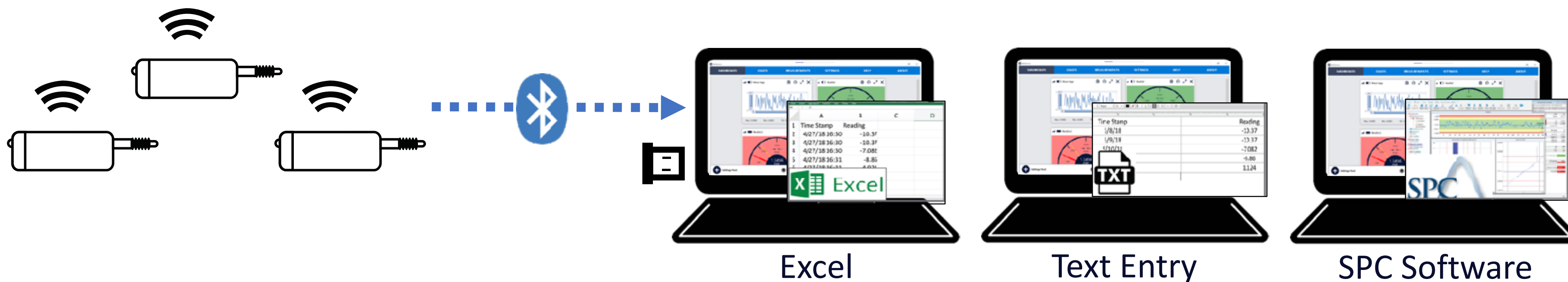
**Bluetooth USB Dongle required for Windows use*

How It Works: MultiGage Windows

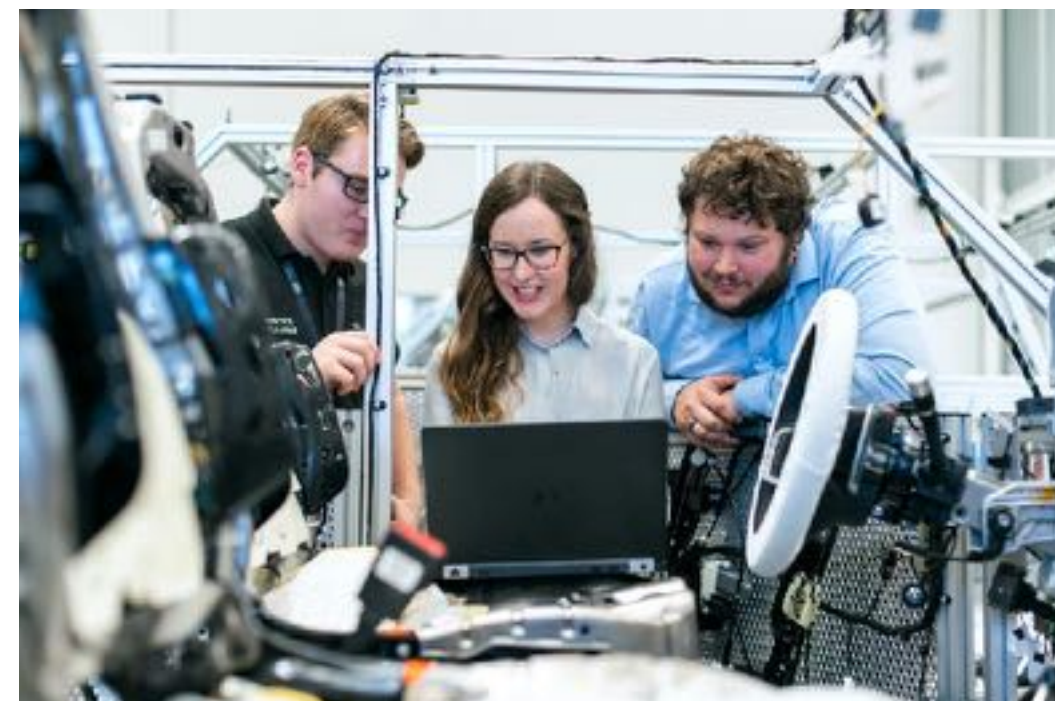
MultiGage Windows: Direct Mode



MultiGage Windows: Keyboard Entry Mode



Applications



What is BlueProbe used for?

- Completely wireless, high-accuracy measurement for deflection and displacement
- Faster sampling rate for continuous measurement and recording (adjustable up to 66 Hz)
- Quick movement measurement such as Snap Checks in mining equipment
- Measuring in hard-to-reach areas and locations exposed to dirt and water (IP66 rating)
- Reducing the risk of human error
- Eliminating Live Work (ELW)
- Avoiding unsafe measurement conditions
- Reading multiple probes at the same time

Mining & Excavation · Manufacturing · Quality Control & Inspection · Slew Bearing Wear Tests · Snap Check

Capture fast movement with BlueProbe

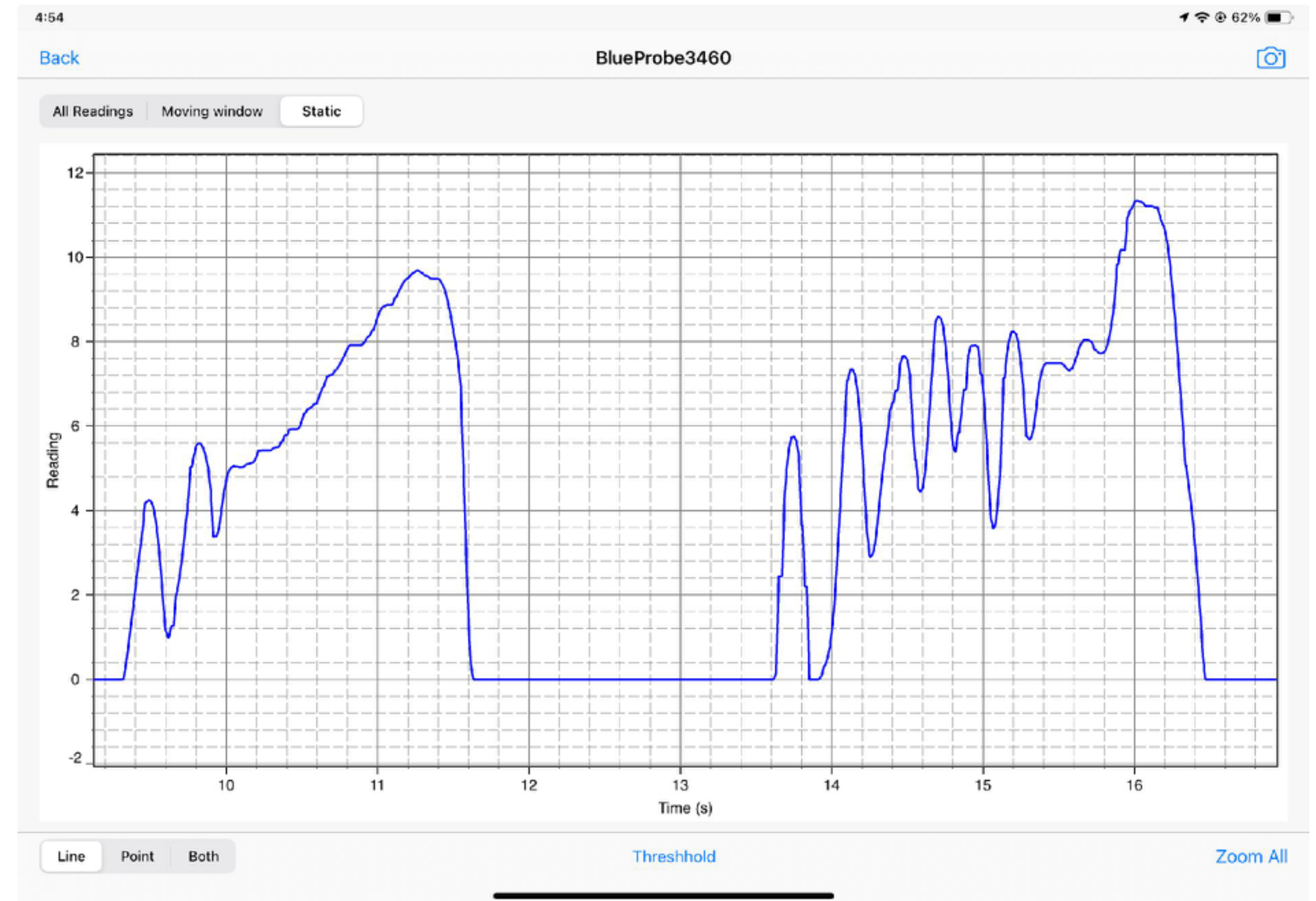
A high sampling rate up to 66 Hz allows capturing fast movement wirelessly from single, or multiple BlueProbe gauges.

Common application: Snap Check

Up to

66 Hz

Adjustable Data
Capture



Onboard Data Logging

BlueProbe features onboard data logging. This is a useful feature for storing deflection measurement readings in the physical memory of the deflection gauge without the need to maintain a connection with your smart device or Windows PC.

The onboard data logging can be done in parallel with regular data logging and recording in the software on a paired device.

This feature is compatible with MultiGage for iOS, Android & Windows.



Onboard
Data Logging



Models

Contact us to learn about our custom models and kits.



PR1-0103

Range: 0.4"/10mm

Resolution: 0.00005"/0.001mm

Accuracy: 1.7 μ m

Included: BLE USB Dongle for Windows PCs,
USB-C Charging Cable, Wall Adapter (US Orders)



PR1-0104

Range: 0.4"/10mm

Resolution: 0.000005"/0.0001mm

Accuracy: 1 μ m

Included: BLE USB Dongle for Windows PCs,
USB-C Charging Cable, Wall Adapter (US Orders)

BlueProbe Kit Options

Upgrade to a BlueProbe Kit to turn this powerful Bluetooth Probe Deflection Gauge into a complete wireless solution – offering greater flexibility, compatibility, durability and portability.



AAA1004045

Included: PR1-0103, MagBase Adjustable Magnetic Base, Protective Carrying Case with Custom Laser-Cut Foam, BLE USB Dongle for Windows PCs, USB-C Charging Cable, Wall Adapter (US Orders)



AAA1004046

Included: PR1-0104, MagBase Adjustable Magnetic Base, Protective Carrying Case with Custom Laser-Cut Foam, BLE USB Dongle for Windows PCs, USB-C Charging Cable, Wall Adapter (US Orders)

Included Hardware

| What's Included | BlueProbe (Gauge Only) | BlueProbe Kit 1 |
|---|------------------------|-----------------|
| BlueProbe: Bluetooth Probe Deflection Gauge | ✓ | ✓ |
| USB-C Charging Cable | ✓ | ✓ |
| USB Adapter (For US Orders) | ✓ | ✓ |
| USB Bluetooth Low Energy Dongle for Windows PC | ✓ | ✓ |
| MultiGage (Software for iOS, Android, and Windows PC) | ✓ | ✓ |
| MagBase: BlueProbe Magnetic Base | — | ✓ |
| Protective Carrying Case with Custom Laser-Cut Foam | — | ✓ |

Included: Gauge Only



1. USB-C Charging Cable
2. Key Wrench
3. USB BLE Dongle for Windows
4. BlueProbe Deflection Gauge
5. Extension Rod (M2.5 Thread)
6. Carrying Case
7. Wall Adapter*



Included: BlueProbe Kit 1



1. BlueProbe Deflection Gauge
2. Protective Carrying Case with Custom Laser-Cut Foam
3. Accessories (USB-C Charging Cable, USB BLE Dongle for Windows, Probe Attachments – Key Wrench & M2.5 Thread Extension Rod, Wall Adapter for US orders)
4. MagBase: BlueProbe Magnetic Base

Specifications

| BlueProbe Specification | PR1-0103 | PR1-0104 |
|----------------------------|---|----------------------|
| Measurement Range | 0.4" (10mm) | |
| Resolution | 0.00005" (0.001mm) | 0.000005" (0.0001mm) |
| Accuracy | 1.7µm | 1µm |
| Data Transmission Range | 330ft (100m) | |
| Data Rate | Up to 66 Hz | |
| Dimensions (Incl. Plunger) | 5.45" (138mm) x 1.53" (38.9mm) x 1.52" (38.6mm) | |
| Stem Holding Diameter | 0.1" (8mm) | |
| Probe Tip Thread Size | M2.5 | |
| Working Temperature | 32 to 122°F (0-50°C) | |
| Dust/Water Resistance | IP66 | |
| Battery | Rechargeable LiPo Battery | |
| Battery Life | 10 Hours | |
| Charging Time | 2.5 Hours | |
| Onboard Data Logging | Yes | |

Bluetooth Connectivity

The Bluetooth Low Energy transmitter is integrated inside the body enclosure.

It is recommended to have a clear path between the gauge and the receiving device for optimum performance.

Data Transmission Range:

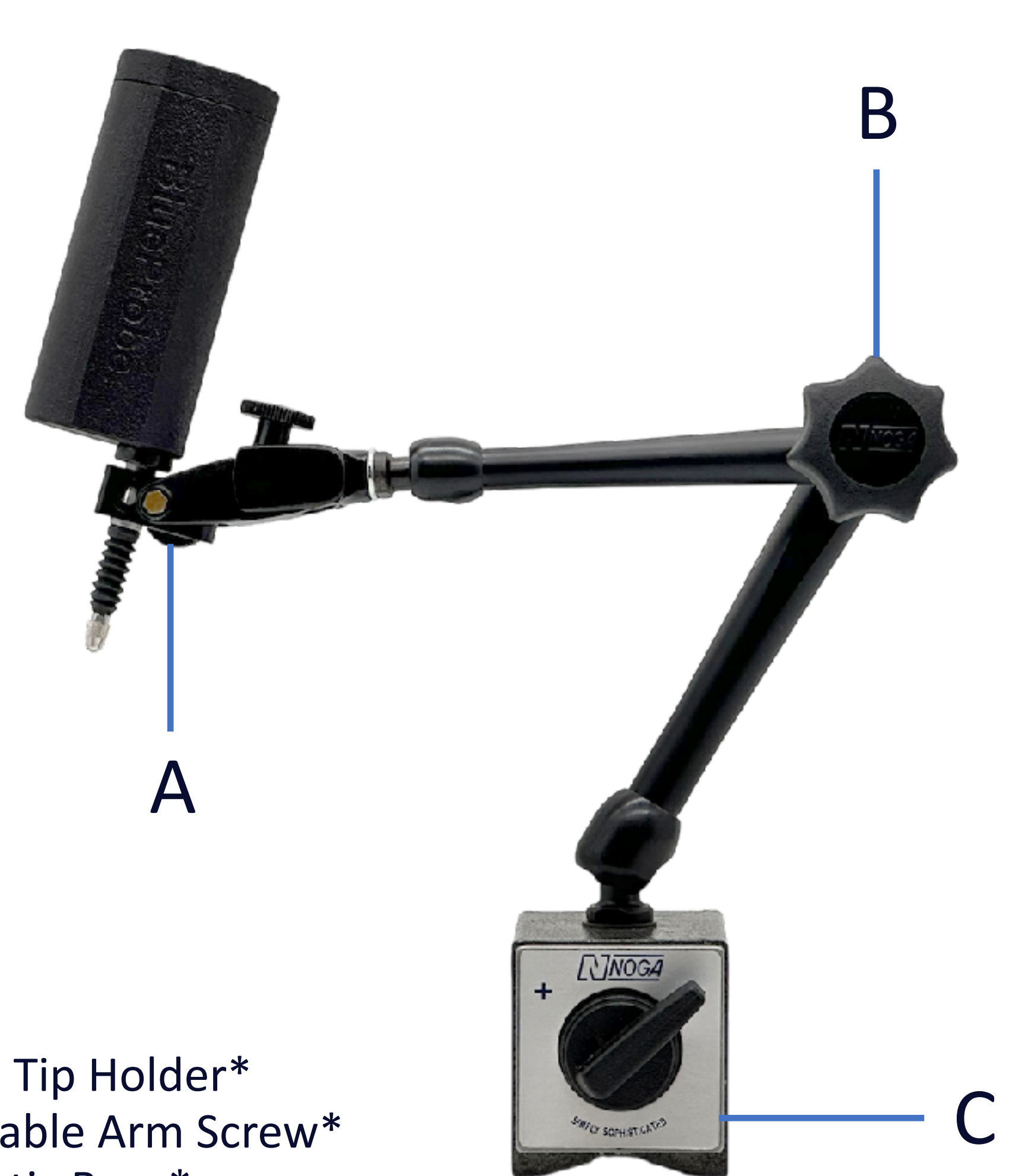
Up to 390ft (120m)



Diagram

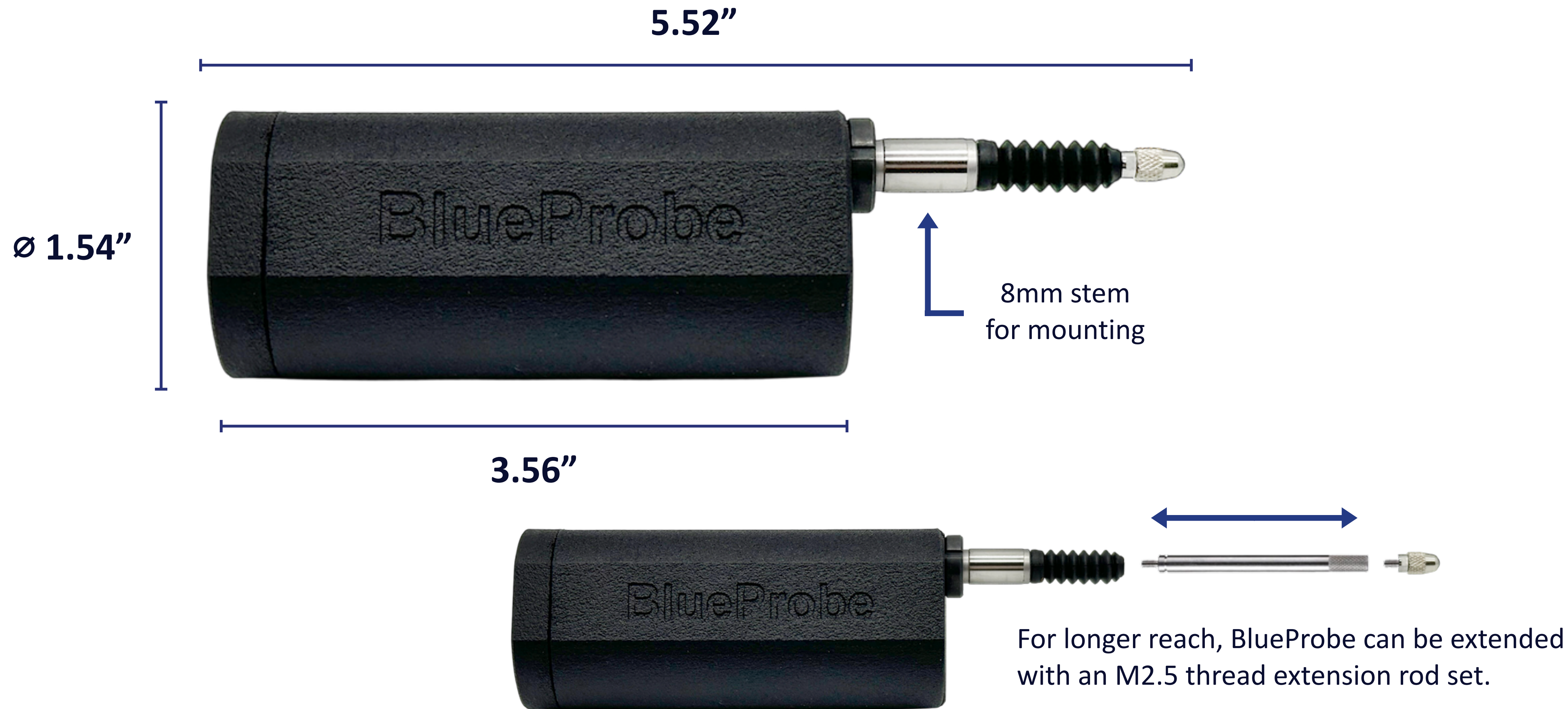


1. Power On/Off Button
2. LED Status Indicator
3. USB-C Charging & Power Port
4. Probe Stem (8mm)
5. Probe Tip (M2.5 Thread)



- A. Gauge Tip Holder*
- B. Adjustable Arm Screw*
- C. Magnetic Base*

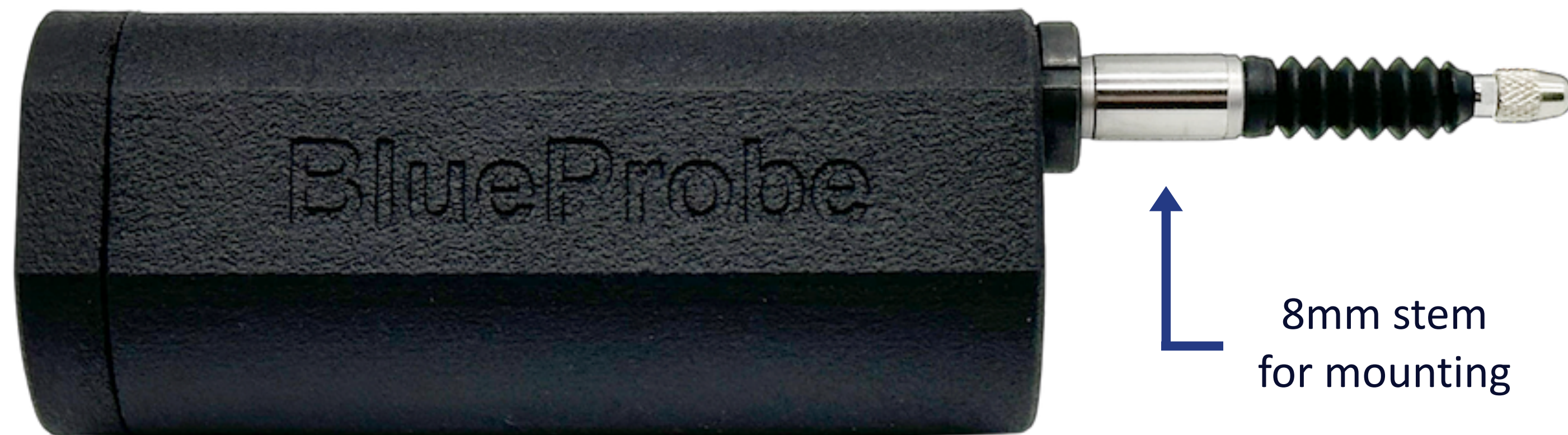
Dimensions



Mounting Options

BlueProbe can be paired with our popular [MagBase Magnetic Base](#).

BlueProbe is easily mounted by the probe stem and can be adjusted to a range of positions. The stem diameter is 8mm.



Videos

BlueProbe Product Demo

COMING SOON

[Explore 140+ tutorials & product support videos on the Motionics YouTube channel](#)

Warranty

BlueProbe comes with a 1-year limited warranty. You have the option to add a 3-year extended warranty. Learn more: <https://motionics.com/warranty/>



Product Warranty

Motionics, LLC warrants every device to be free of all defects in material and workmanship, for one year from date of shipment to buyer, covered through its Limited Warranty.

With the Extended Warranty, your coverage will extend to three years from original shipment date of the device and adds up to two coverages of accidental damage, each subject to a service fee¹ plus applicable tax. The warranty prices and service fees vary with each individual device and can be found at <https://store.motionics.com/products/extended-warranty>.

Limited Warranty

1-Year Warranty²

Extended Warranty

3-Year Warranty + 2 Coverages of Accidental Damage³

¹ Service Fees are reduced prices for repair/replacement of the device covered by the Extended Warranty.

² Limited Warranty covers all defects in material and workmanship for free for all devices for one year from date of shipment to buyer.

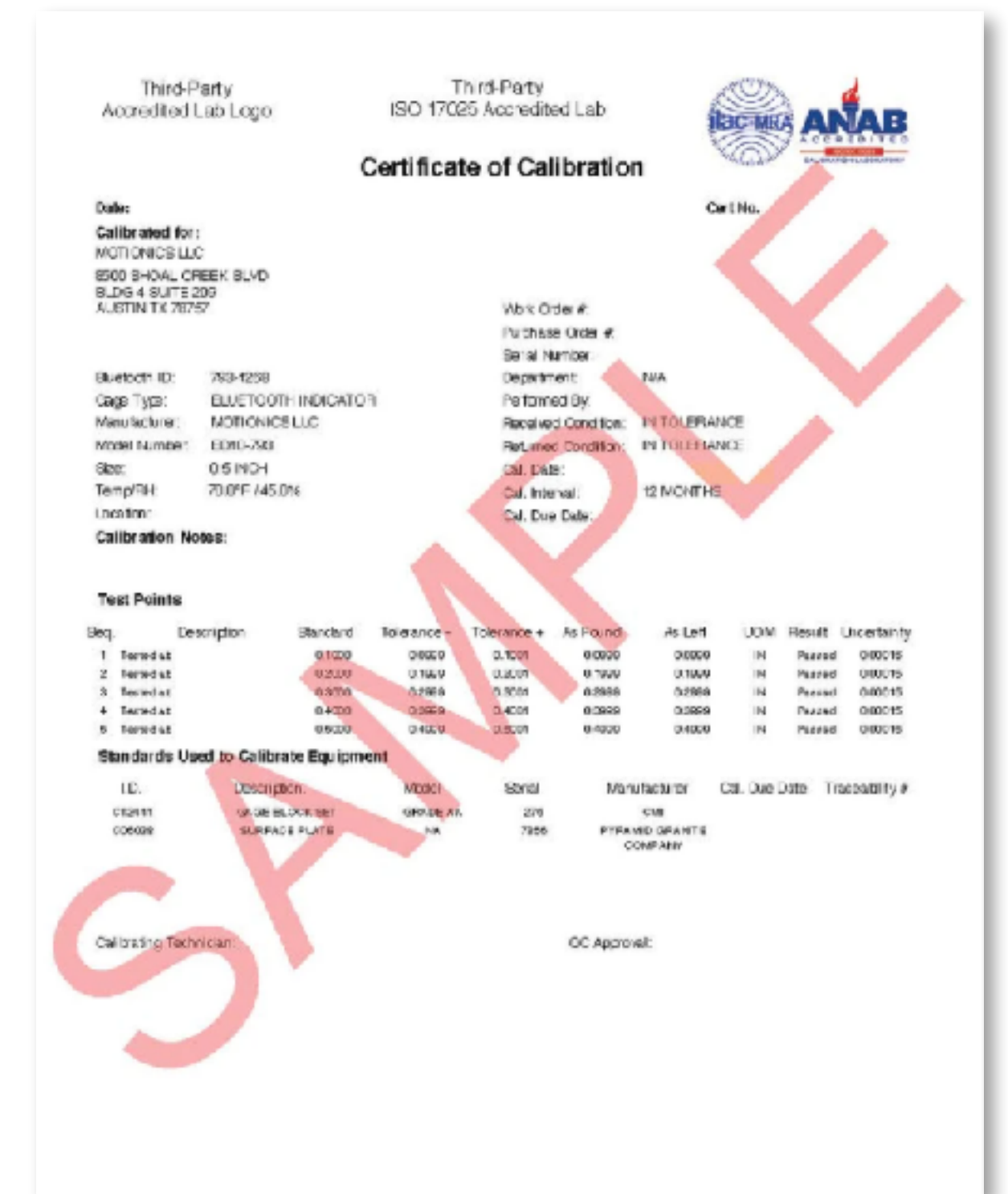
³ Accidental damage coverage applies to an operational or mechanical failure caused by an accident from handling as a result of an unexpected and unintentional external event (i.e. damage caused by dropping or liquid contact from spills) that arises from the buyer's normal usage of the covered product.

Calibration

BlueProbe comes with a manufacturer inspection certificate.

If needed, you can add an [ISO 17025 calibration certificate](#) to BlueProbe (sample to the right). ISO Calibration takes 10-15 business days, and you can purchase it separately on our online store.

It is recommended to do annual calibration. For recalibrating your BlueProbe, visit the [Motionics Calibration](#) page. ISO 17025 calibration takes 10-15 days and manufacturer calibration can be done in-house in 1 business day.

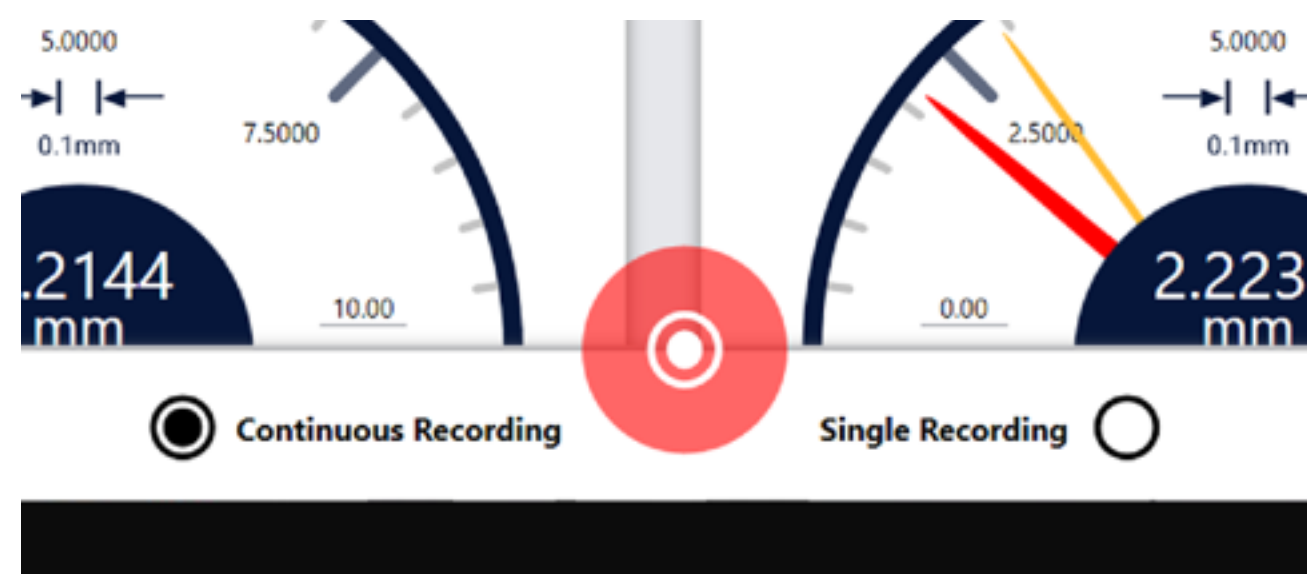


Data Capture Options

With BlueProbe, you can capture data continuously (up to 66 samples/sec) or in single data point. You can easily switch between the two in the software. There is no button on BlueProbe that can be pressed to trigger data capture. You can trigger data capture using the following methods:

- 1- Tapping the Capture button in the software
- 2- Pressing the button on a [BlueKey Wireless Trigger Switch](#) (sold separately, only for Windows PCs).
- 3- Hitting the F9 (customizable) key on your keyboard (only for Windows PCs)

With options 2 & 3 you can directly enter the readings into Excel or any other software.



Power & Battery

BlueProbe is powered by a LiPo rechargeable battery that is charged with the included USB-C cable. US orders also come with a wall adapter. You can keep the gauge connected to a power supply through the USB-C port for continuous non-stop measurement.

Battery Life (Rechargeable)

10 Hours

Charging Time

2.5 Hours

Software

BlueProbe is commonly used with MultiGage, our advanced general wireless measurement software. Other custom application software is also available for Pile Load Tests and Rotor Runout.

General-Use Software



[MultiGage iOS App](#) (Free)



[MultiGage Android App](#) (Free)



[MultiGage Windows](#) (Free)



iOS



Android

Application-Specific Software



[PileSense](#) (iPad App for Pile Load Tests)



[Rotor Runout](#) (iPad App for Rotor Runout)



PileSense



Rotor Runout

Cloud-Based Software



[MultiGage Cloud](#) (subscription-based)

Software: MultiGage (iOS & Android)

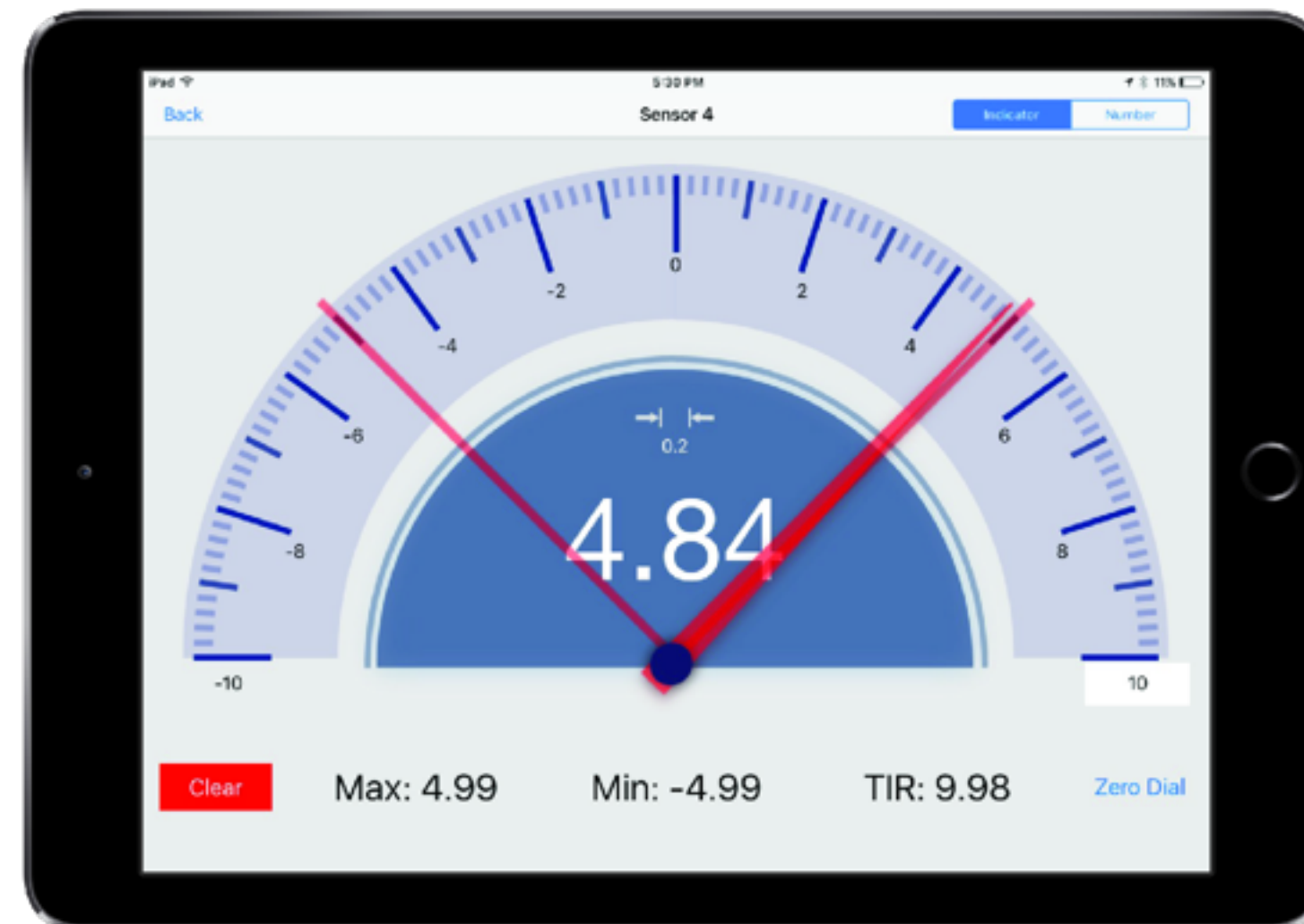
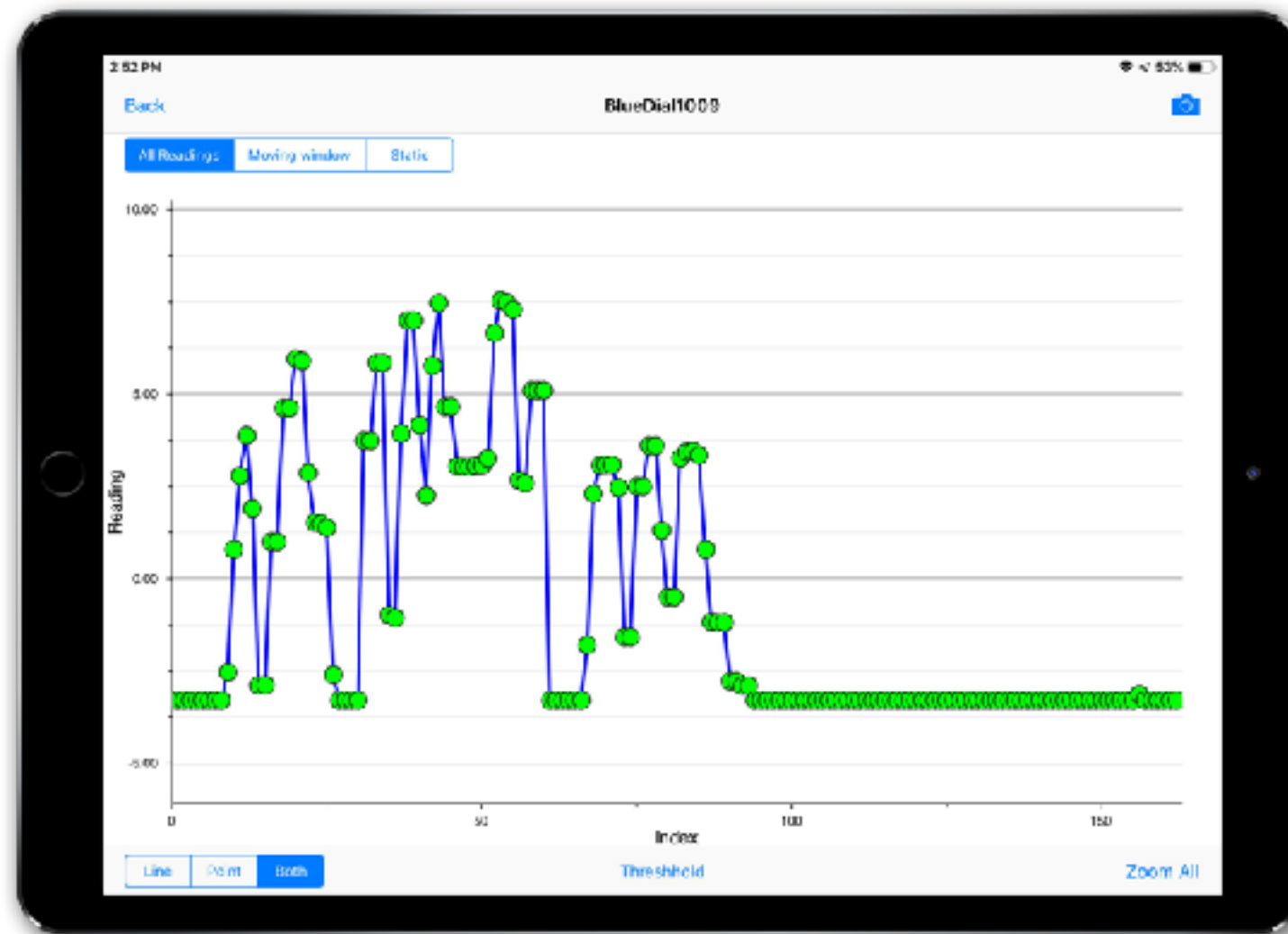
MultiGage allows the user to connect to multiple gauges and read/record measurements wirelessly on smart devices, including iPhone, iPad, and Android.



Features:

- Simultaneous reading of multiple devices
- Data plotting
- Continuous or single data point recording
- Max, Min, TIR measurement
- Remote zeroing from the app
- GO/NG judgment with green/red color indication
- Custom formula calculator
- Large analog probe meter with adjustable range
- Data saving in local database
- Data export in CSV via email and cloud drives

Software: MultiGage (iOS & Android)



A smartphone displaying a "Record Detail" screen for record 102019-013702. It contains a table with columns for Device, Reading#, Max, Min, TIR, Time, and Value.

| Device | Reading# | Max | Min | TIR | Time | Value |
|--------------|----------|-------|--------|--------|---------------|--------|
| BlueDial1027 | 141 | 9.640 | -4.720 | 13.700 | 2019-10-29 PM | |
| BlueDial3000 | 141 | 9.610 | -2.500 | 12.110 | 2019-10-29 PM | -4.720 |

Buttons for "EXPORT" and "PLOT" are visible at the bottom.



A smartphone displaying a grid of 15 sensor readings under the heading "All Readings". Each entry includes a "Clear" button, the current reading, and "Max", "Min", and "TIR" statistics.

| Sensor | Reading | Max | Min | TIR |
|-----------|----------|------|-------|------|
| Sensor 1 | 0.06 mm | 4.48 | -4.76 | 9.24 |
| Sensor 2 | -0.38 mm | 4.98 | -4.89 | 9.87 |
| Sensor 3 | -2.24 mm | 4.47 | -4.85 | 9.32 |
| Sensor 4 | -2.38 mm | 4.80 | -4.96 | 9.79 |
| Sensor 5 | 1.29 mm | 4.58 | -4.86 | 9.44 |
| Sensor 6 | -2.94 mm | 4.49 | -4.20 | 8.72 |
| Sensor 7 | 3.02 mm | 4.68 | -4.84 | 9.52 |
| Sensor 8 | 0.85 mm | 4.56 | -4.87 | 9.43 |
| Sensor 9 | -1.35 mm | 4.68 | -3.79 | 8.47 |
| Sensor 10 | 2.86 mm | 4.94 | -4.97 | 9.91 |
| Sensor 11 | -1.56 mm | 4.25 | -4.95 | 9.2 |
| Sensor 12 | 0.08 mm | 4.95 | -4.64 | 9.6 |
| Sensor 13 | -0.21 mm | 4.75 | -4.76 | 9.51 |
| Sensor 14 | 0.84 mm | 4.71 | -4.87 | 9.58 |
| Sensor 15 | 3.37 mm | 4.5 | -4.14 | 8.64 |

Quick Start: MultiGage (iOS & Android)

- Use the Power button to turn on the Bluetooth transmitter.
- Run MultiGage, then tap + to enter the pairing page.
- Wait for the software to finish scanning for nearby devices, select **BlueProbeXXX**, then hit **Connect**.
- Connection may take a few seconds. Once paired, BlueProbe readings will show in the software.

Software: MultiGage (Windows)

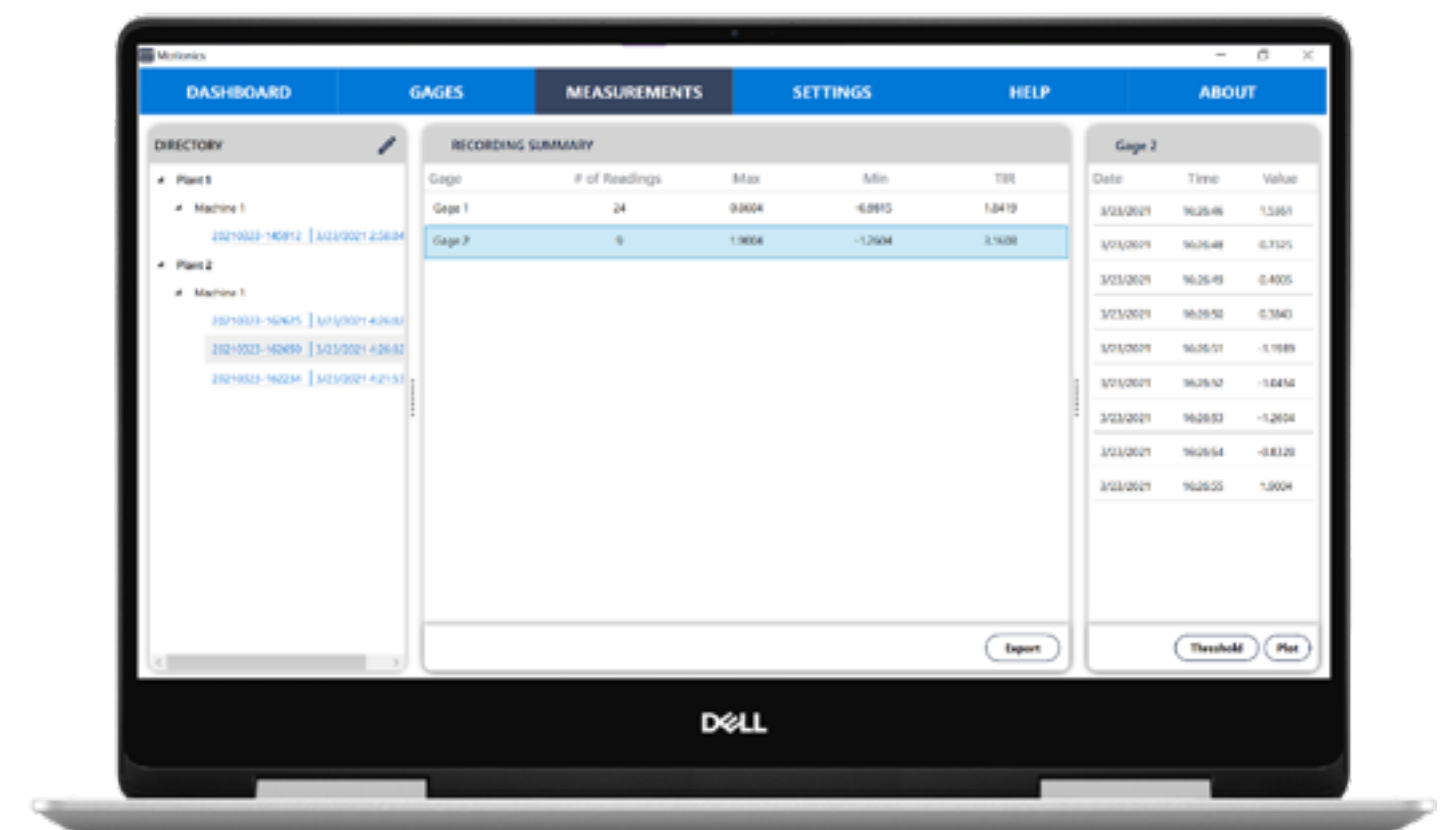
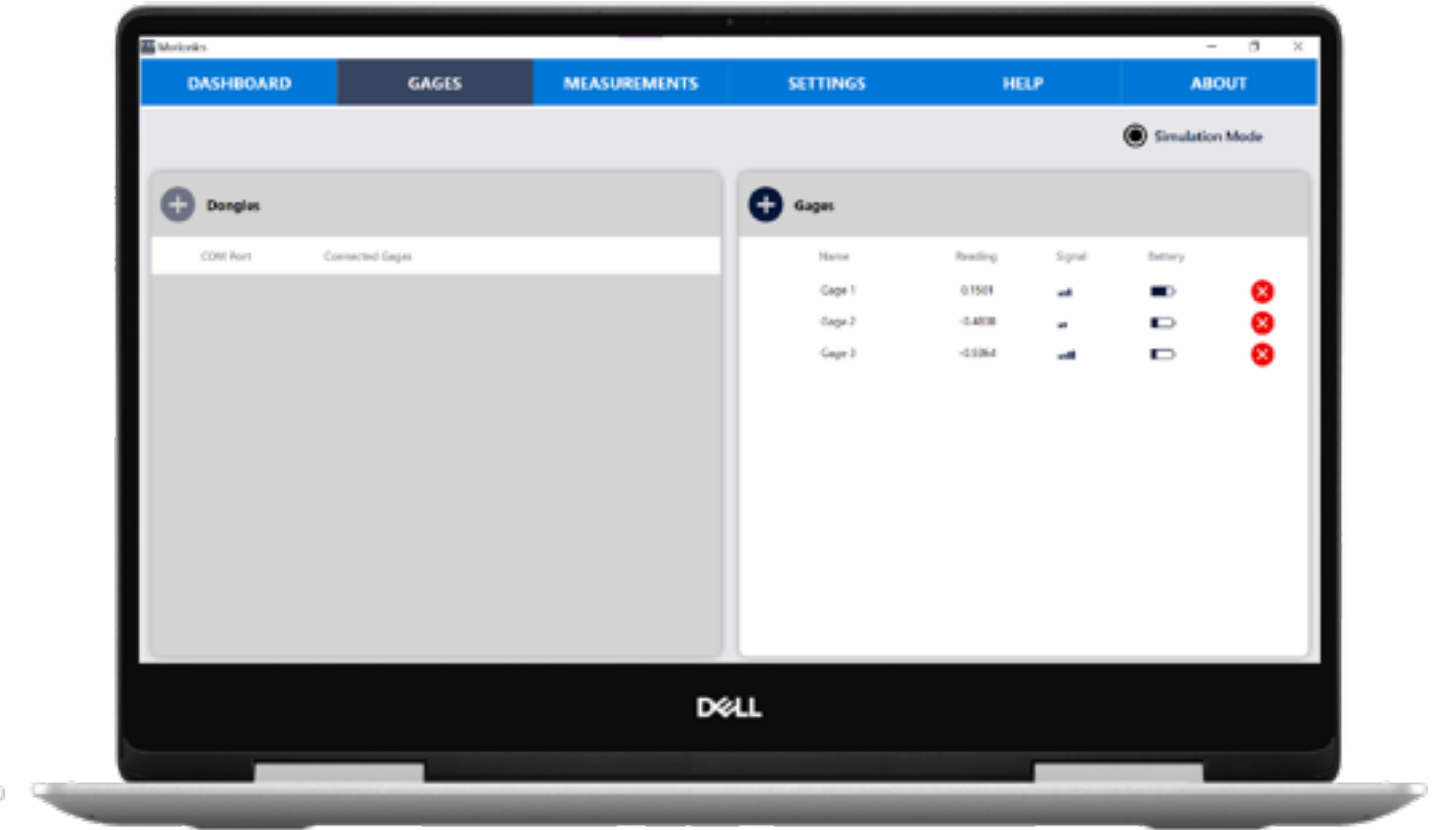
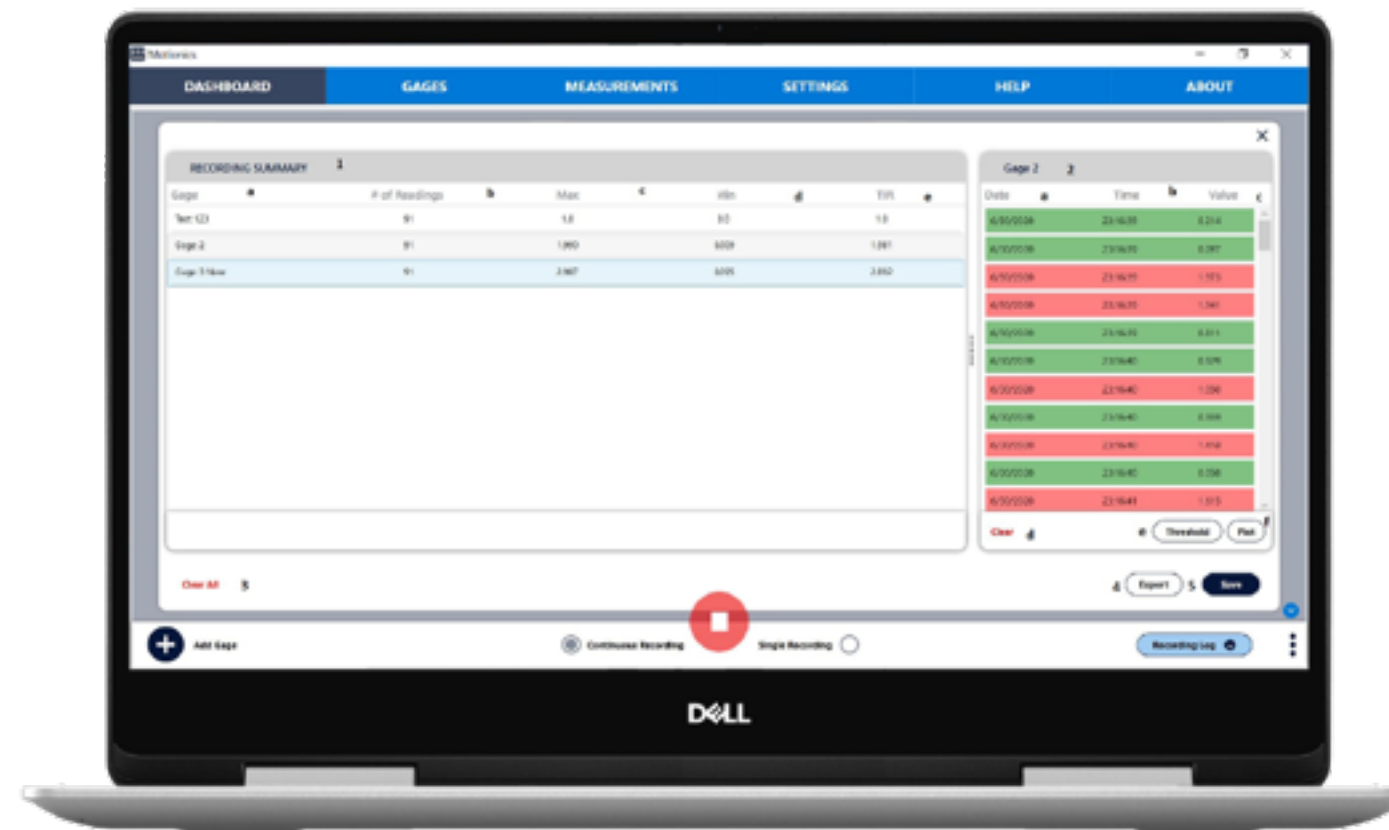
MultiGage allows the user to connect to multiple devices and read/record measurements wirelessly on Windows PC.

Features:

- Simultaneous reading of multiple devices
- Real-time data plotting
- Continuous or single data point recording
- Max, Min, TIR measurement
- Remote zeroing from the app
- GO/NG judgment with green/red color indication
- Customizable dashboard
- Large analog probe meter with adjustable range
- Data saving in local database
- Data export as CSV
- Live keyboard data input to Excel or SPC software



Software: MultiGage (Windows)



Quick Start: MultiGage (Windows)

- Use the Power button to turn on the Bluetooth transmitter.
- Plug the USB dongle into your PC, then run MultiGage software.
- Go to the **Gages** tab, then click **+** in the **Dongles** panel.
- Select the dongle from the list and hit **Select**.
- Click **Scan** on the gages panel, Click **BlueProbe**, then **Connect**.
- To add BlueProbe to the dashboard, go to the **Dashboard** tab, hit **+**, then select **BlueProbe** from the dropdown menu.

BlueProbe Maximum Gauge Connections

Multiple BlueProbes can be connected to the receiving device at once, but the maximum number of BlueProbe gauges varies based on the receiving device:

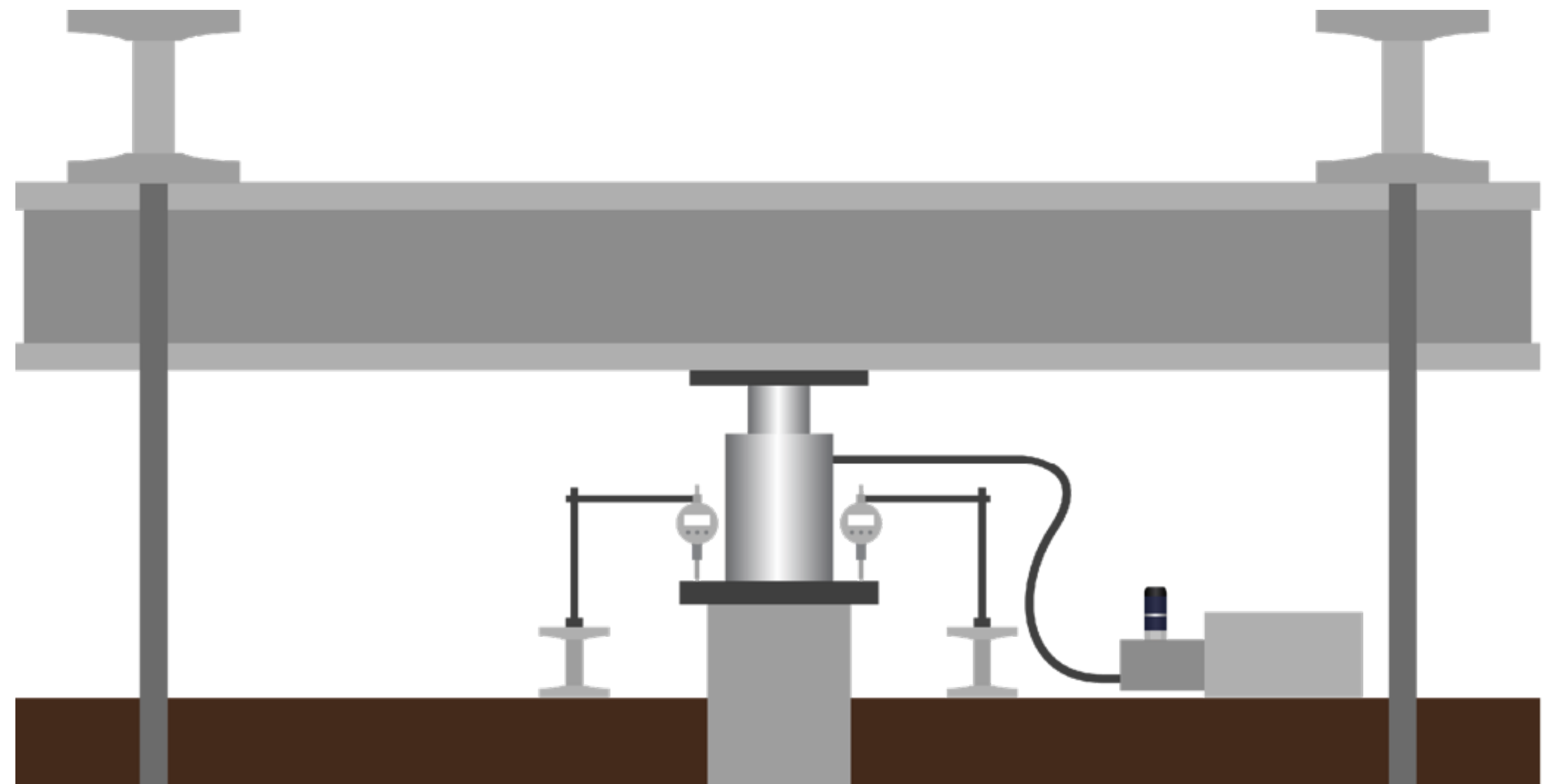
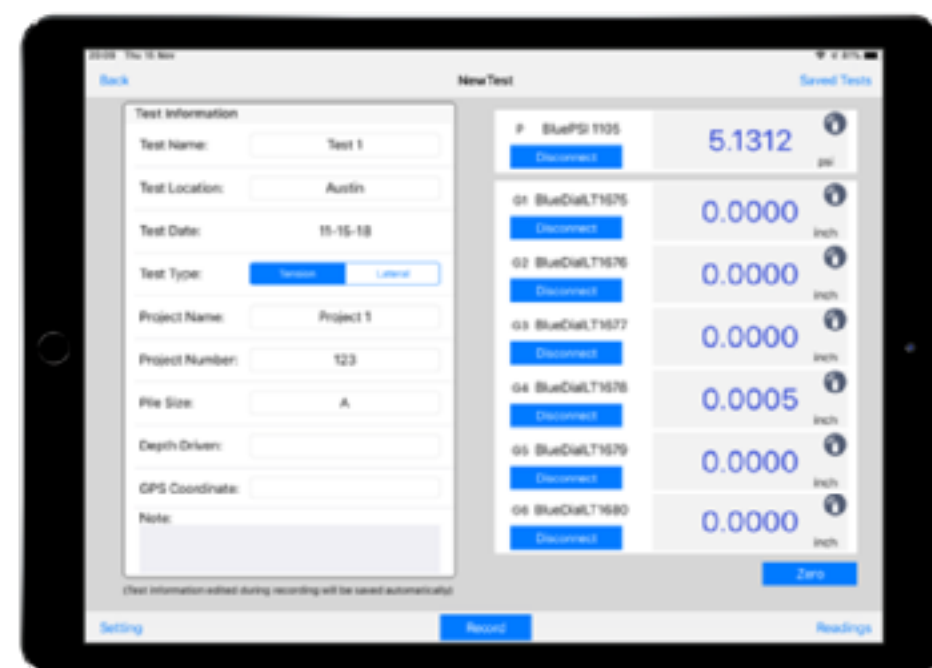
| MultiGage iOS | MultiGage Android | MultiGage Windows | MultiGage Cloud |
|---------------|-------------------|-------------------|------------------------|
| 14 BlueProbes | 8 BlueProbes | 8+ BlueProbes* | Unlimited BlueProbes** |

**Up to 8 BlueProbes can be connected to each BLE dongle. You can use as many dongles as you need/you can install on your PC. USB hub can be used to increase the number of dongles you can connect to your PC.*

***Connection limit depends on plan.*

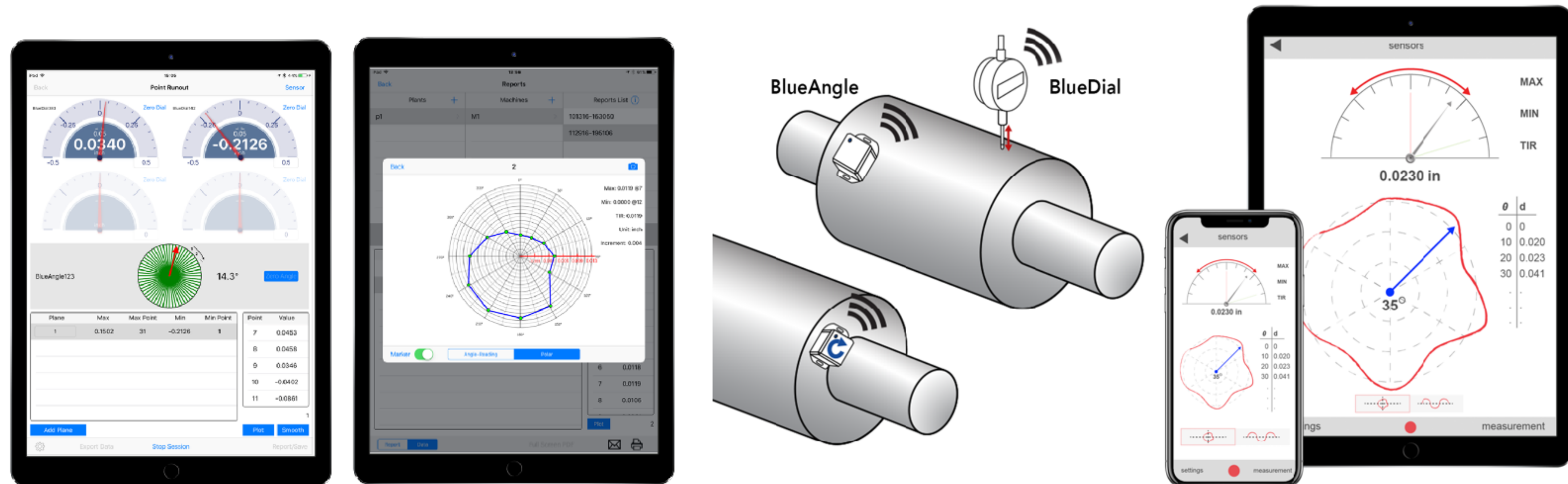
Software: PileSense App

BlueProbe is also compatible with [PileSense](#), iPad app for wireless pile load and deflection testing. [Learn more.](#)



Software: Rotor Runout

BlueProbe also works with [Rotor Runout](#), an app that is specifically designed for runout applications.



Troubleshooting

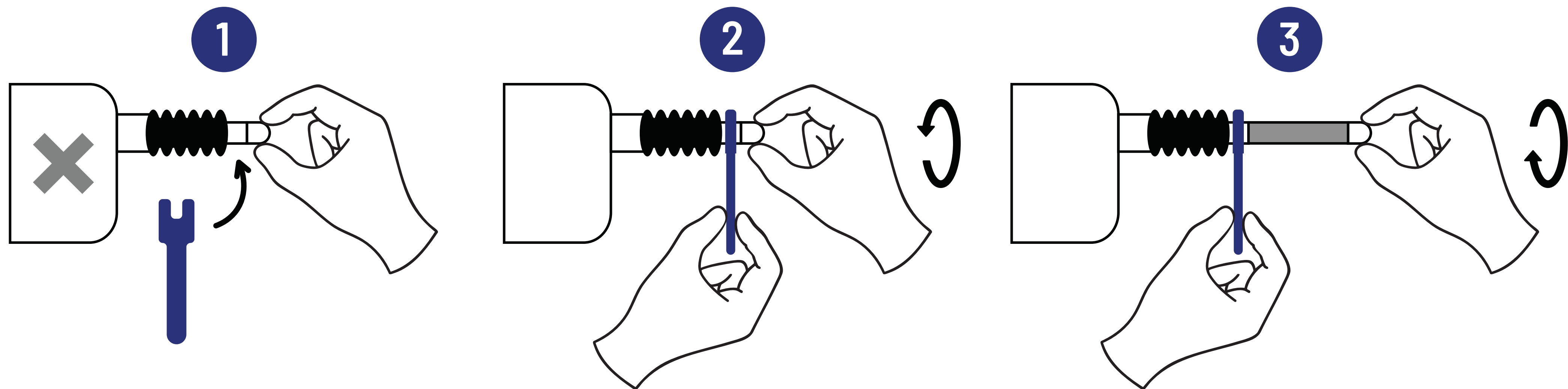
Having trouble connecting to BlueProbe?

- Make sure the power button is on, and the blue indicator light is showing.
- Make sure you are connecting/pairing to the gauge using our MultiGage app or software, not through system settings of your device.
- Wait a few seconds for BlueProbe to appear on the scanning page; if you don't see it appear, you can hit refresh to scan again.
- If using Windows, make sure to connect to the dongle first, then scan for available devices under the **Gages** tab.

⚠ Extension Rod Installation

BlueProbe includes an extension rod which can be used to extend the reach of your deflection gauge. You can also add any longer extension rods with an M2.5 thread.

DO NOT apply any torque to the spindle while holding the gauge as this may damage the internal sensor. You **MUST** use the supplied key wrench when removing the probe tip or installing an extension rod.



Customer Support

- For customer support visit: <https://store.motionics.com/pages/contact-us>
- Email info@motionics.com or call +1 (205)264-1896.
- You can [click here](#) to access our range of product support videos.



Customization

BlueProbe can also be fully customized to fit your specific application requirements.

You can specify the number of BlueProbe gauges to add to the kit, BlueProbe range/resolution, additional magnetic bases, and the layout of your custom laser-cut foam inside your protective case. You can include an iPad to the kit for streamlined access to our MultiGage software wherever you go.

We also offer software customization.

Contact us for more information:
info@motionics.com



Useful Links

View Product: <https://store.motionics.com/products/blueprobe>

FAQ: <https://motionics.com/faq/>

Learn about MultiGage Software: <https://motionics.com/multigage>

MultiGage Windows User Guide: <https://motionics.com/downloads/MultiGageWindows.pdf>

Motionics YouTube Channel: <https://www.youtube.com/user/motionicsllc>



Thank you

info@motionics.com +1(205) 264-1896

Designed for Safety, Accuracy & Efficiency.

Motionics specializes in developing new technologies for wireless measurement, diagnostics, monitoring, and advanced vibration analysis of rotating machinery.

 Made in the USA