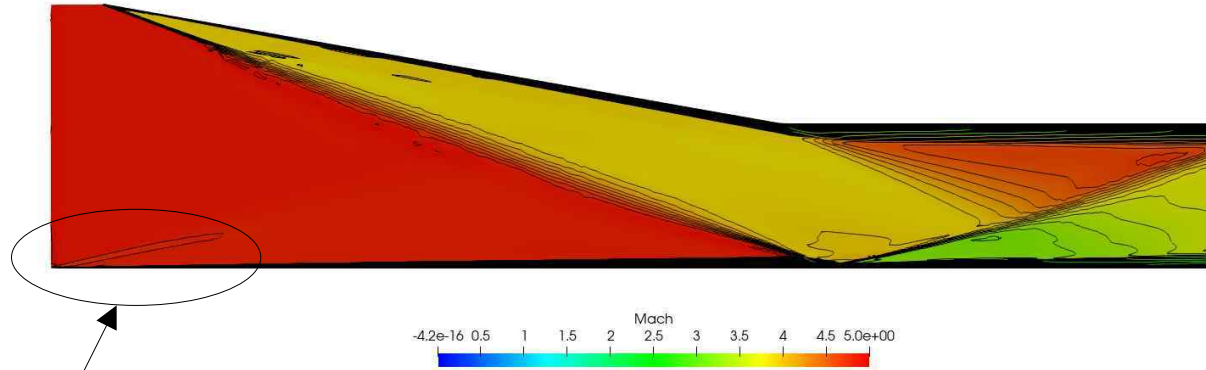
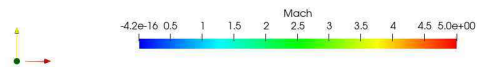
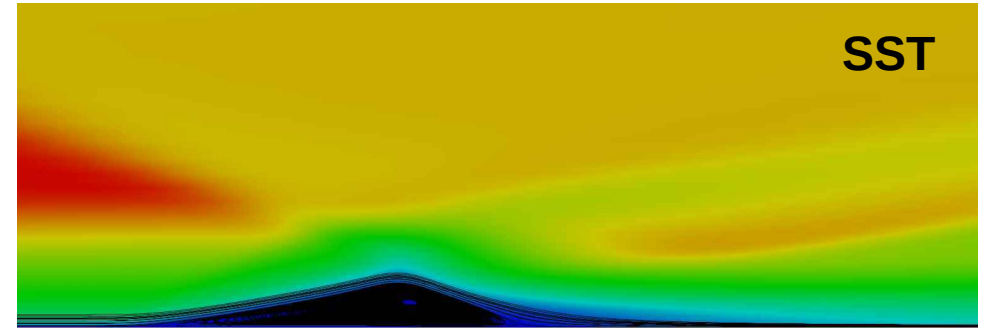
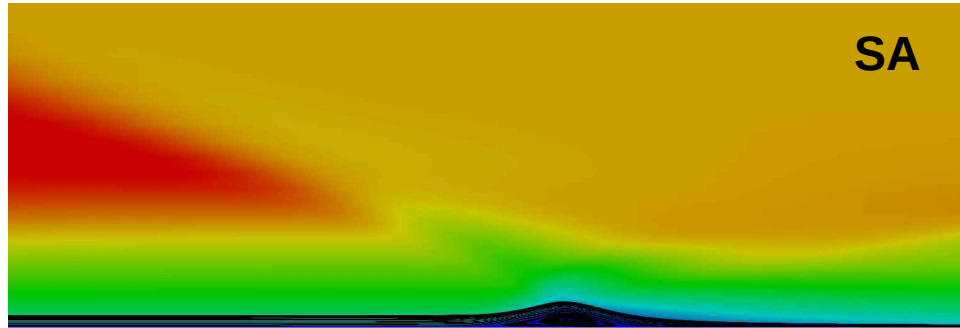


# Mach 5 SWBLI Case

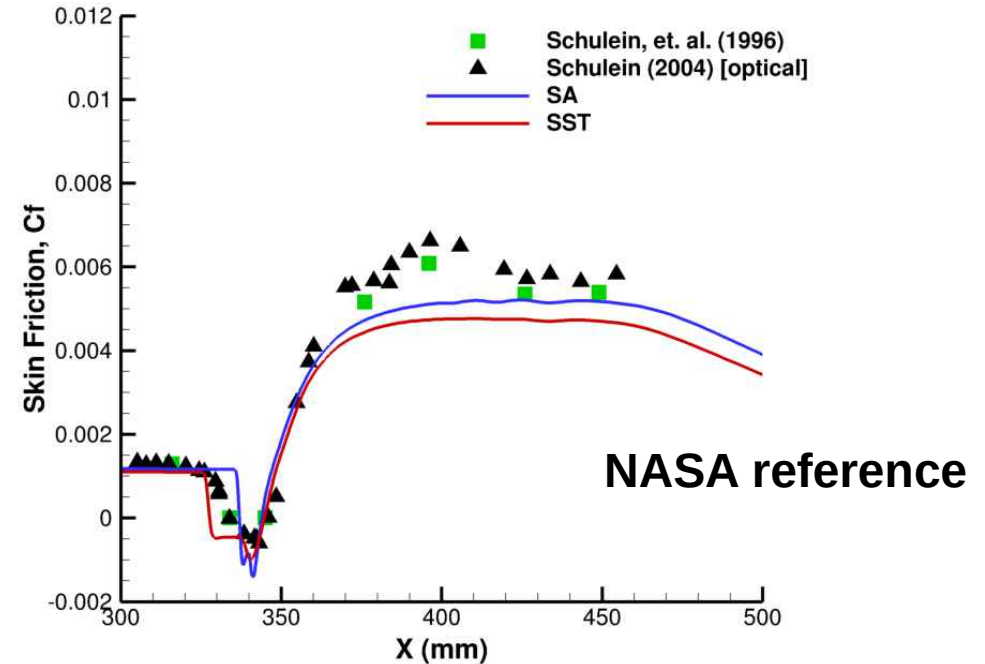
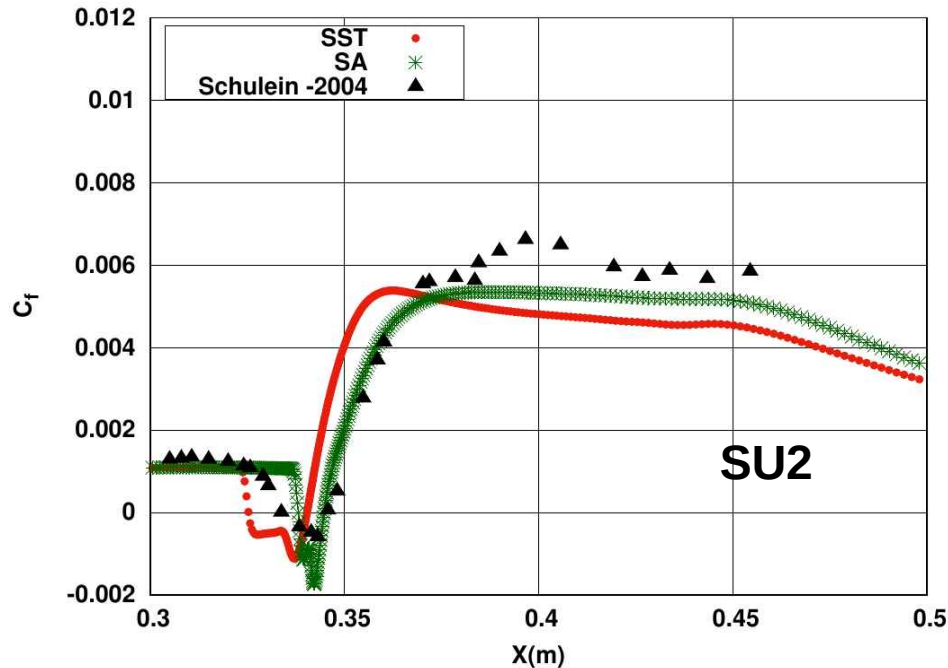


Issue at inlet



Separation bubbles

# Comparison of skin friction coefficient



- SA model seems to be matching with Result reported in reference
- For **SST** there seems to be a **shift of 5 mm** in bubble location (i.e.  $C_f$  below 0) (could not sort with different boundary conditions at inlet/outlet)